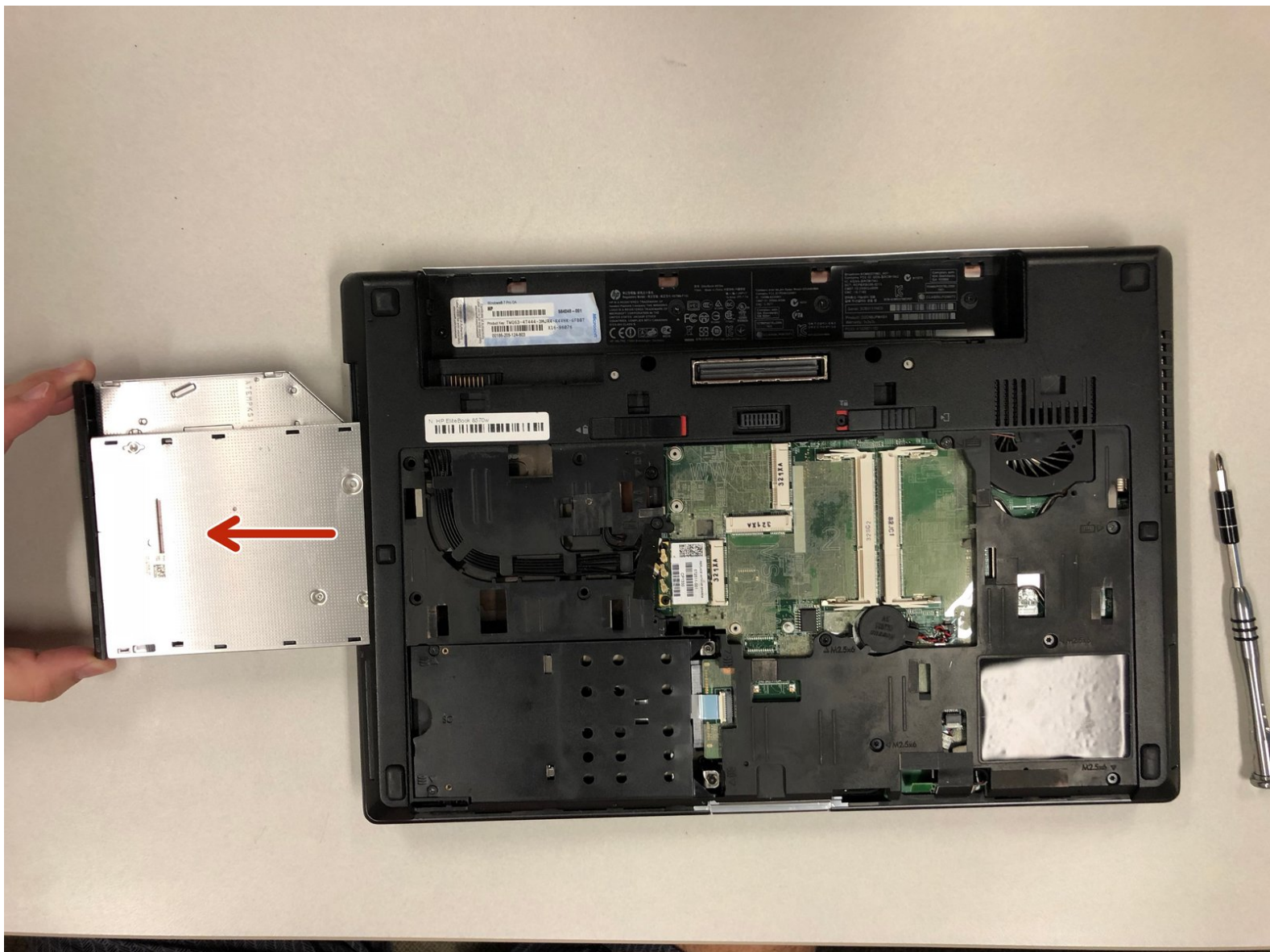




# HP Elitebook 8570w Optical Drive Replacement

A guide to removing and replacing the optical drive in an HP Elitebook 8570w.

Written By: MJ Routh



---

## INTRODUCTION

This replacement guide will show you how to disconnect the optical drive from your HP EliteBook 8570w. It consists of 4 relatively easy steps that should guide you successfully.

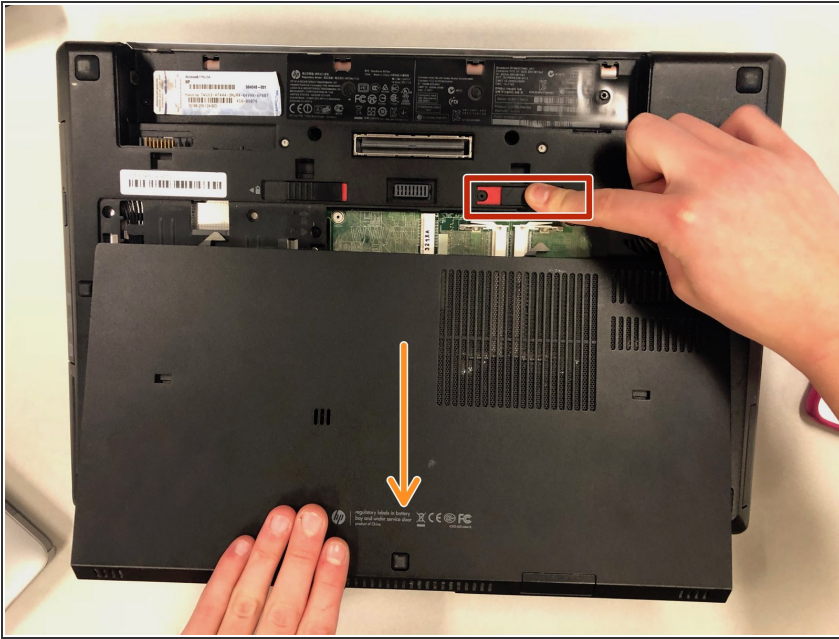
---



### TOOLS:

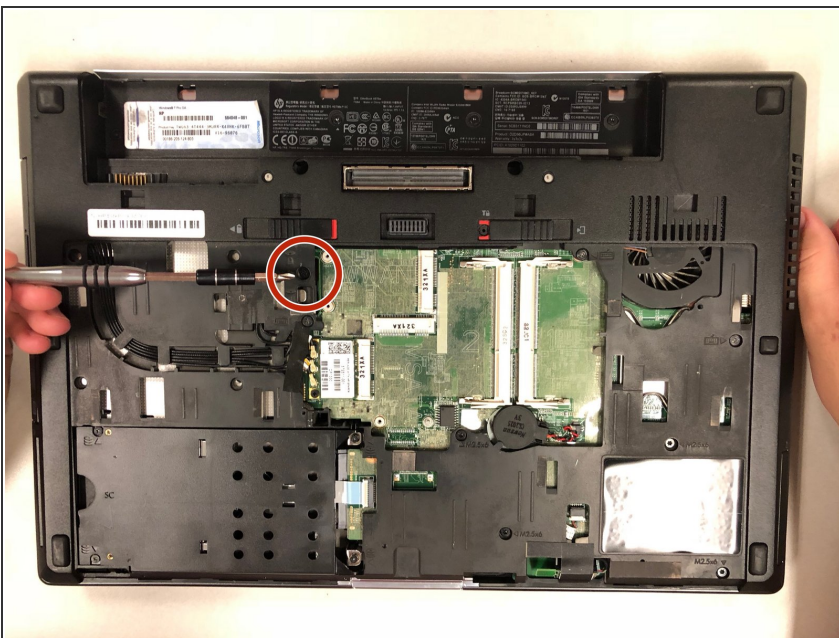
- [Phillips #0 Screwdriver](#) (1)
-

## Step 1 — Optical Drive



- Begin by removing the computers back covering.
- Use the right slider to unlock the backing.
- Slide the backing towards you while holding the slider to remove it.

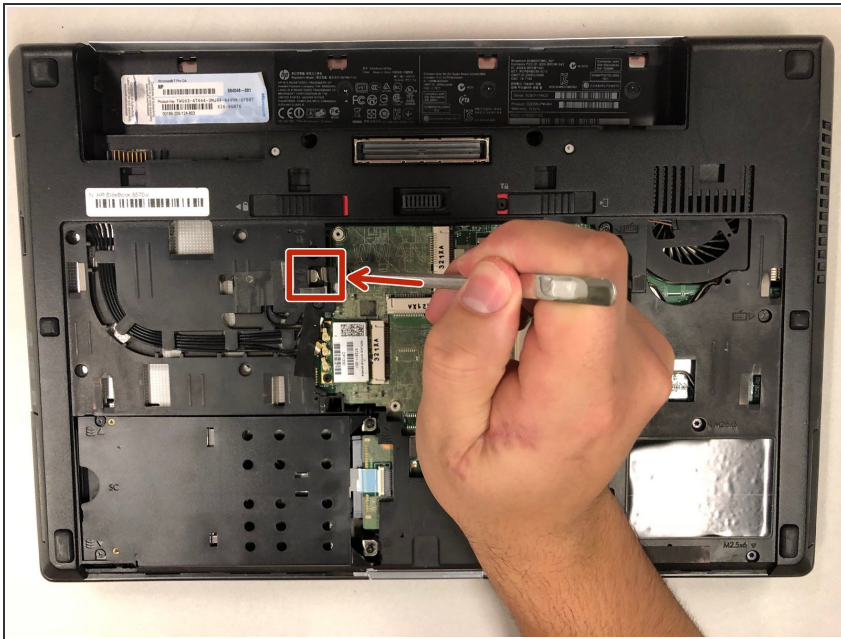
## Step 2



- Once the backing is removed, locate the panel to the left where the optical drive is stored.
- Locate the single screw in the photo.
- Unscrew the 0.8mm Phillips screw and place to the side.

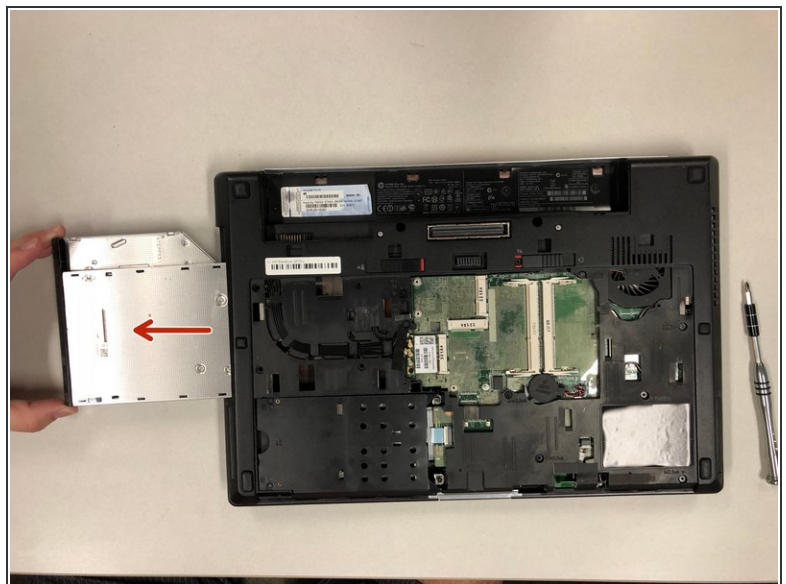
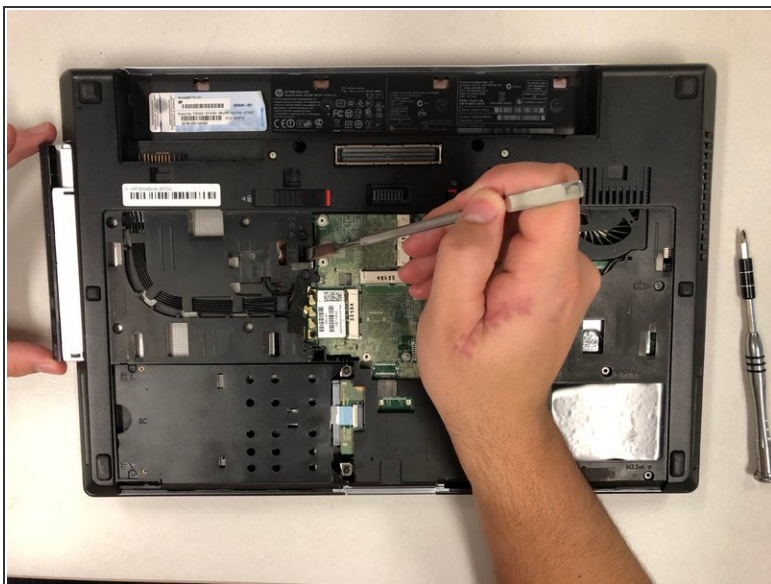


### Step 3



- Locate the small metal piece in the photo.
- Using a tool, push the piece in the given direction.

### Step 4



- Once pushing the piece outwards, the optical drive will pop out of the side of the computer.
- Grab the optical drive and carefully remove it from the back of the computer.

To reassemble your device, follow these instructions in reverse order.