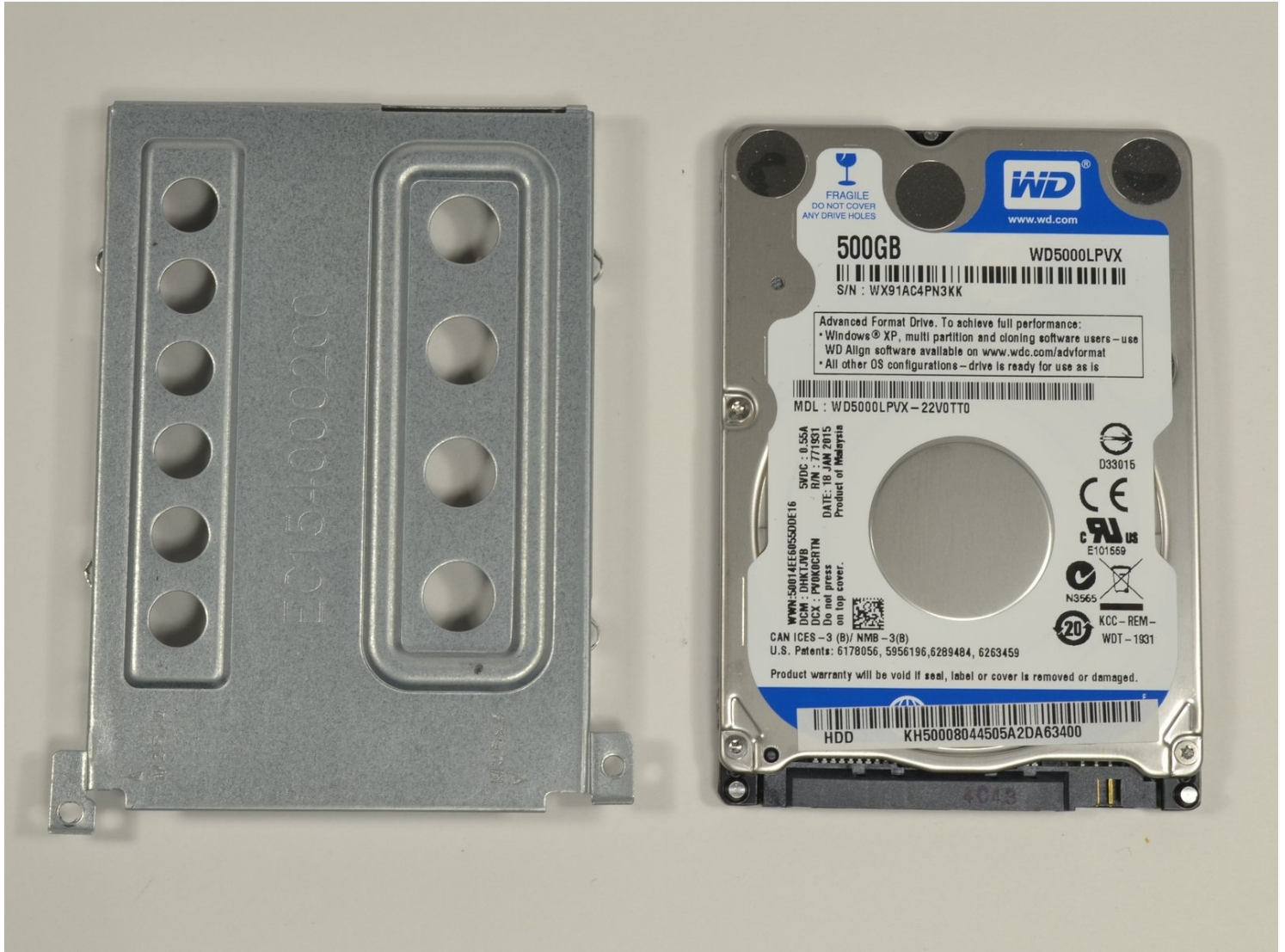




Acer E5-571-54FL Hard drive Replacement

There are many reasons to replace your hard...

Written By: Aaron Weissman



INTRODUCTION

There are many reasons to replace your hard drive. You may be running out of storage space or want to upgrade to a solid state drive. Perhaps you are encountering errors with your data. This guide will get you fixed up in no time.

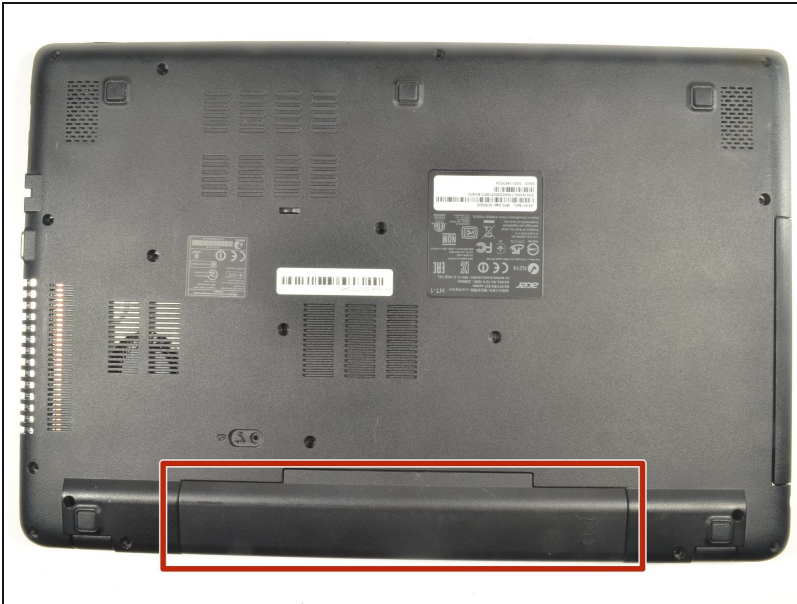
TOOLS:

[Phillips #0 Screwdriver](#) (1)

[iFixit Opening Tool](#) (1)

[Metal Spudger Set](#) (1)

Step 1 — Battery



- Power down the laptop prior to beginning.
- Turn the laptop over with the battery closest to your body.

Step 2



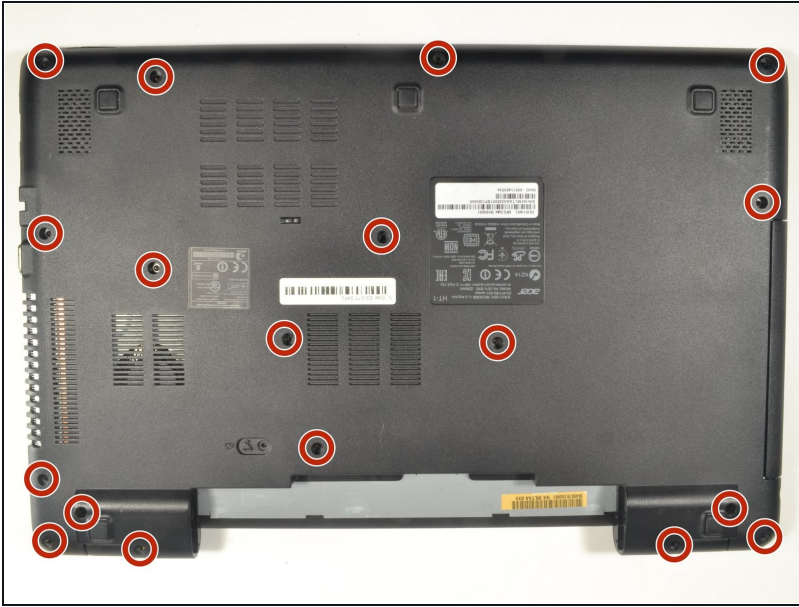
- Insert the pointed end of a spudger into the battery release.
 - Slide the release gently all the way to the left.
- ❗ You should hear a sound after the slide is all the way left. This lets you know the battery has disengaged.

Step 3



- Place your hands on each end of the battery.
- Pull the battery towards your body to remove it.

Step 4 — Keyboard



- Using a #0 Phillips screwdriver, remove a total of eighteen identical 8mm Phillips screws and set them aside.

Step 5



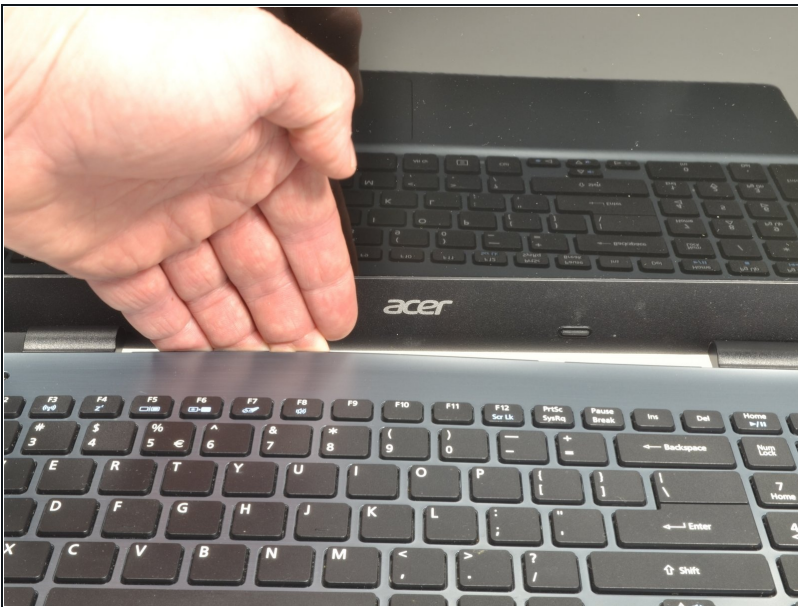
- Rotate the laptop 180 degrees so that the battery compartment is now furthest away from your body.

Step 6



- Turn the laptop over so that you can easily open the screen to a vertical position.

Step 7



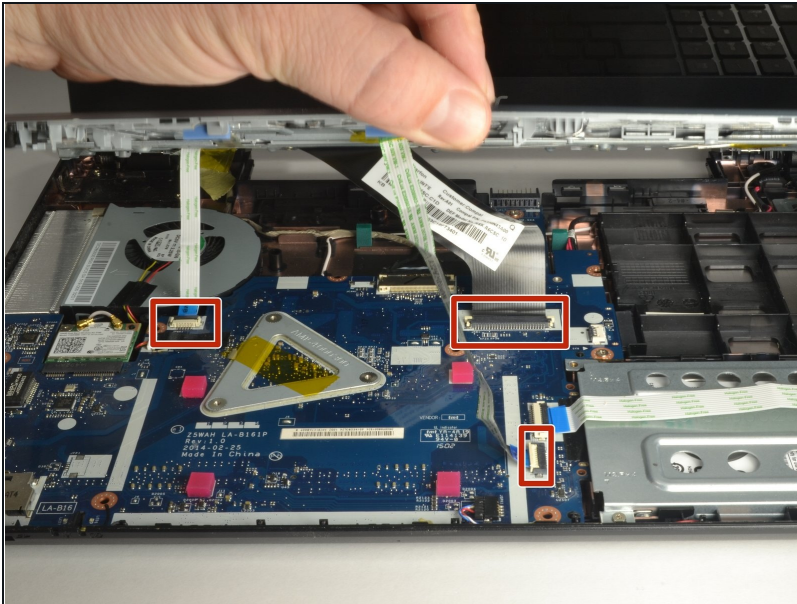
- Put your fingers under the top of the keyboard assembly directly below the Acer logo.
- Carefully pull up on the center until you hear the tabs disengage from the bottom.

Step 8



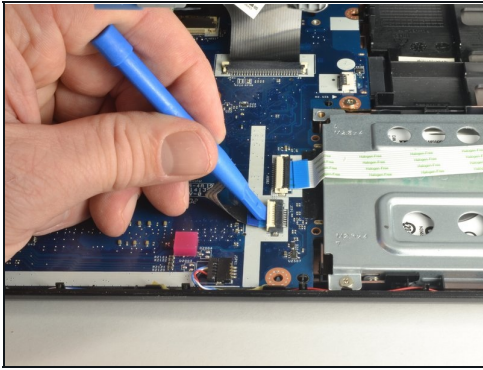
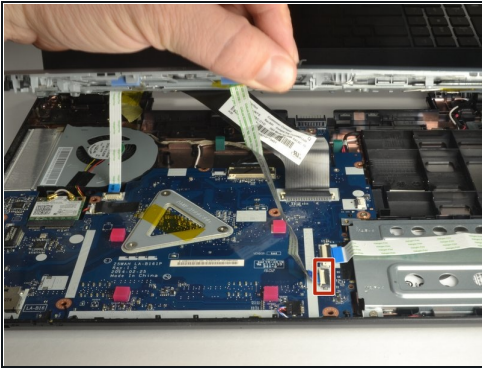
- Work your way around the seam with the plastic opening tool carefully prying the base and top cover apart.
- ① If you have difficulty with the plastic opening tool, use a metal spudger **but be more cautious** to not damage or mar your laptop case.

Step 9



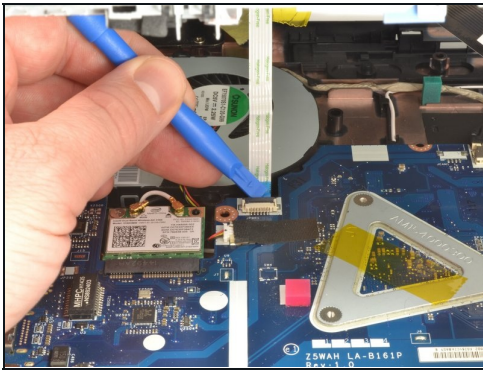
- When the two halves are separated, carefully lift up the front of the keyboard and touchpad assembly.
- You will see three ribbon cables attached to the motherboard.

Step 10



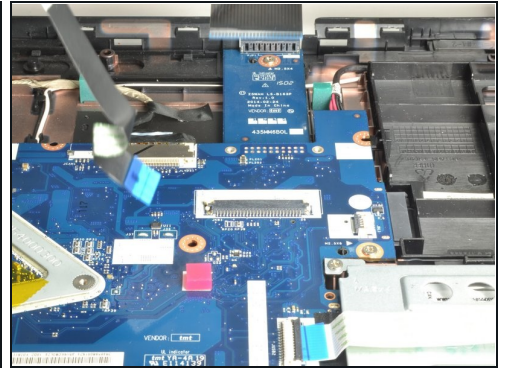
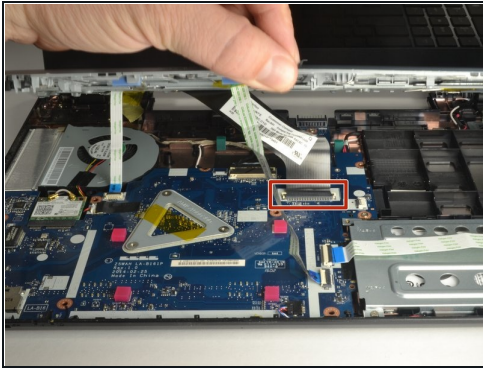
- Closest to the ribbon cable on the zero insertion force (ZIF) connector is a **white** locking tab.
- Carefully lift up on the locking tab with the plastic opening tool to release the ribbon cable. (Picture 2)
- Remove the ribbon cable from the connector.

Step 11



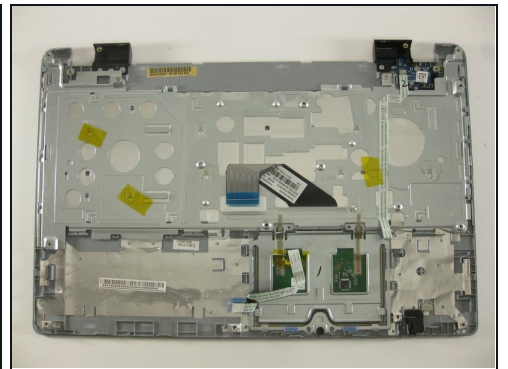
- Closest to the ribbon cable on the ZIF connector is a **black** locking tab.
- Carefully lift up on the locking tab with the plastic opening tool to release the ribbon cable. (Picture 2)
- Remove the ribbon cable from the connector.

Step 12



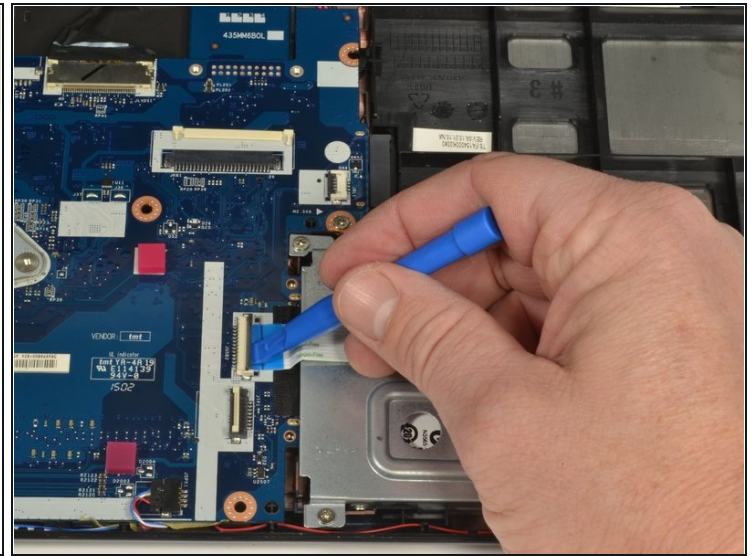
- On each side of the large connector there are two white tabs.
- Carefully push away from you with the plastic opening tool on each white tab to release the cable. (Picture 2)
- Remove the ribbon cable from the connector.

Step 13



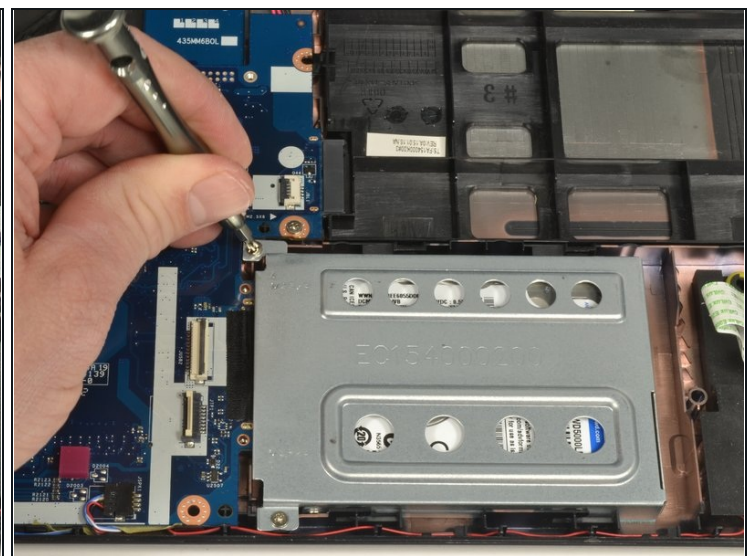
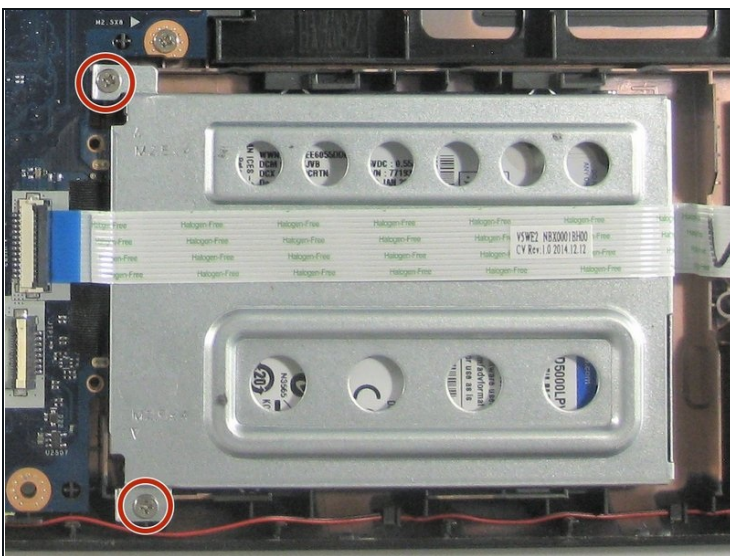
- Once all three ribbon cables are disconnected, lift off the top cover with the keyboard and touchpad.

Step 14 — Hard drive



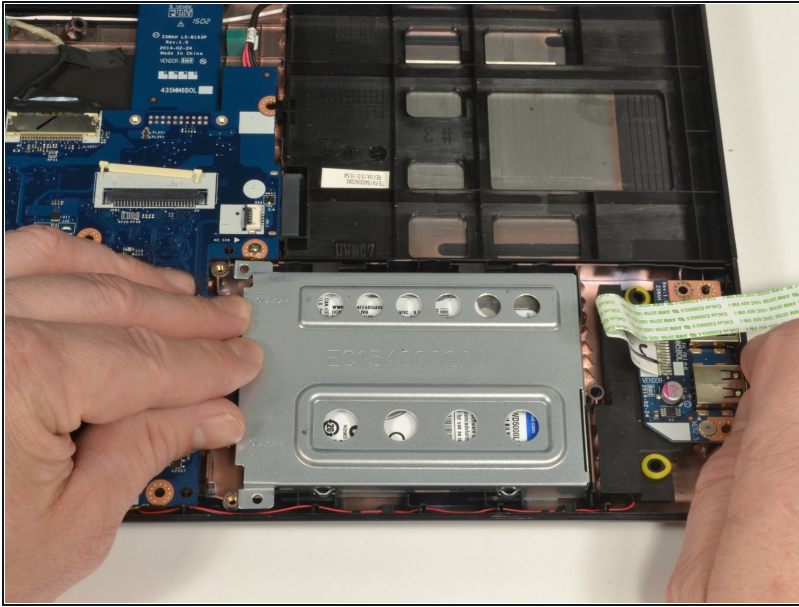
- Locate the hard drive and its carriage at the lower right corner of the laptop.
- Release the USB port ribbon cable by using the plastic opening tool to carefully lift up the black locking tab of the ZIF connector.
- Move the USB port ribbon cable to the side.

Step 15



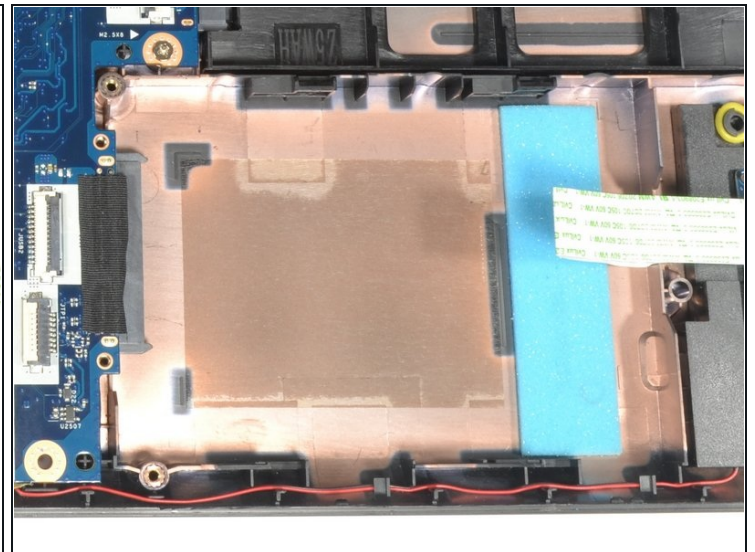
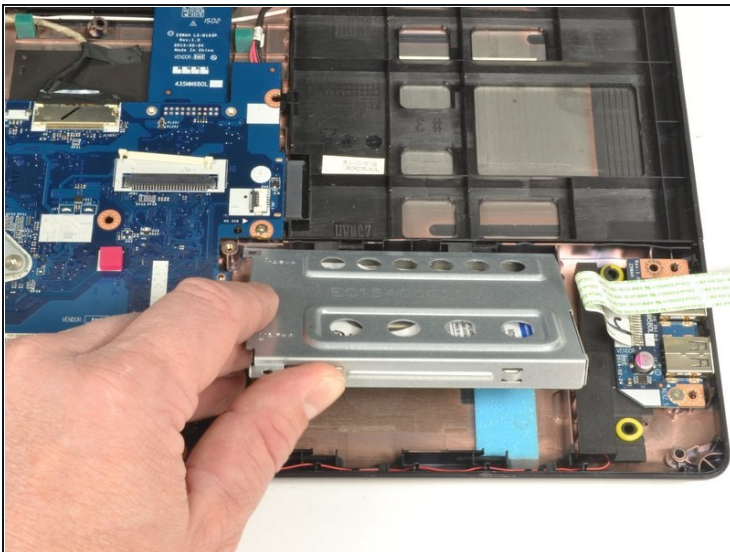
- Use a #0 Phillips screwdriver to remove the two 4mm screws securing the hard drive carriage in place.

Step 16



- Hold the right side of the laptop in place with your right hand.
 - Put the fingers of your left hand along the top edge of the hard drive carriage.
 - Push the hard drive carriage towards your right hand to disconnect it from the motherboard.
- ⓘ This procedure may require more force than other procedures.

Step 17



- Lift up the hard drive carriage on the edge closest to your body to remove it.
- ⓘ If doing the motherboard replacement guide, skip the next step.

Step 18



- Locate the two 3 mm Phillips screws holding the hard drive into the carriage. There is one screw on each side of the carriage.
- Hold the hard drive carriage with your non-dominant hand along one side. Ensure one of the Phillips screws is visible.
- Using a #0 Phillips screwdriver, remove the 3 mm screw to release the side of the hard drive from the carriage.
- Repeat the two previous bullet marks to remove the second 3 mm Phillips screw. This should also free the hard drive from the carriage.

To reassemble your device, follow these instructions in reverse order.