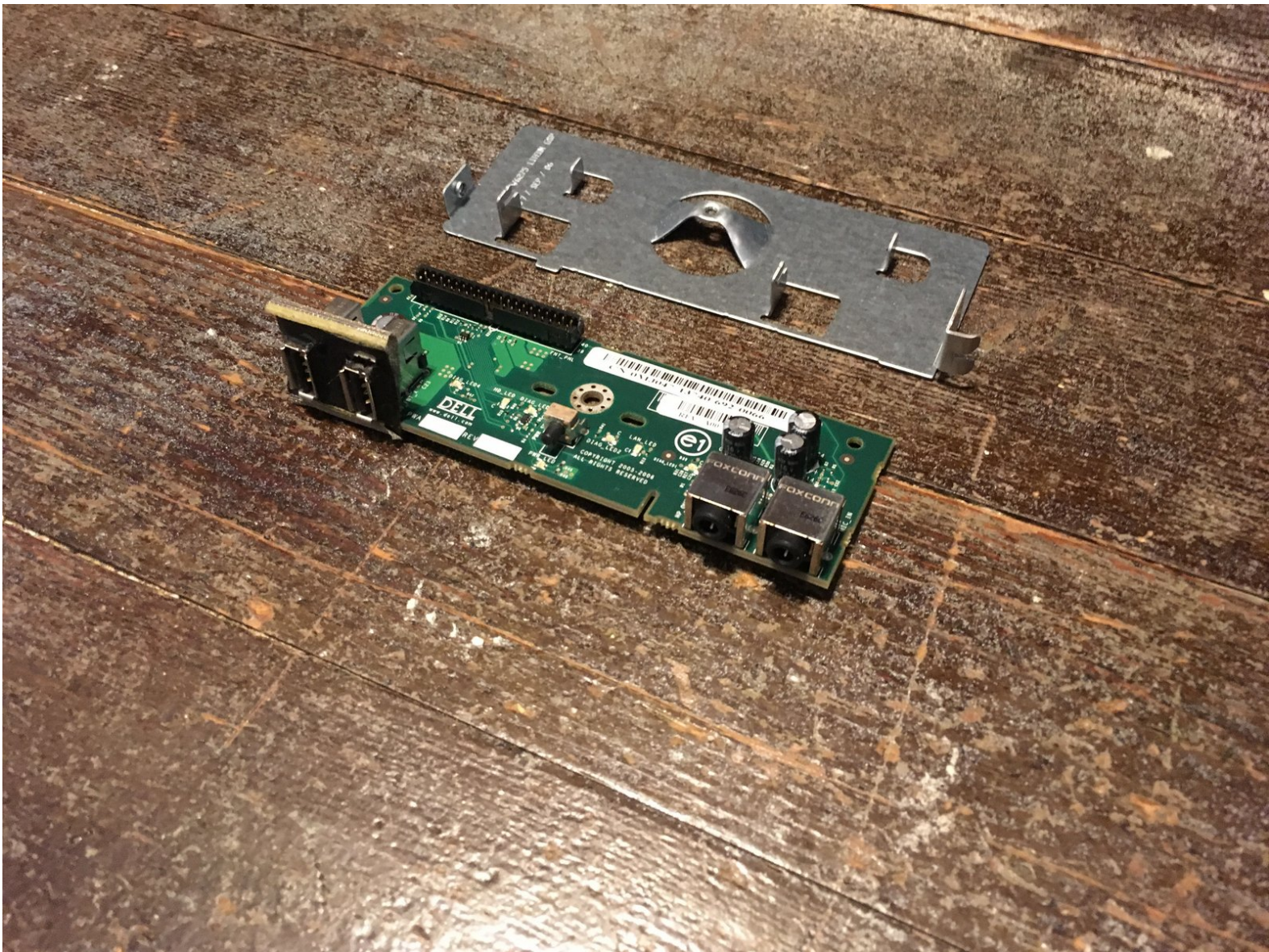




# Dell Optiplex GX620 Front panel Replacement

Front panel removal and replacement for a Dell Optiplex GX620.

Written By: Padraic Hoselton





## TOOLS:

- [Phillips #2 Screwdriver](#) (1)
-



## Step 1 — How to unplug and discharge before repair



- Power down your PC and remove the power cord from the back.

## Step 2



- Press and hold the power button for about 10 seconds, then release.
  - ⓘ This helps drain any remaining power stored in the capacitors, so that you can safely work on the internal components.

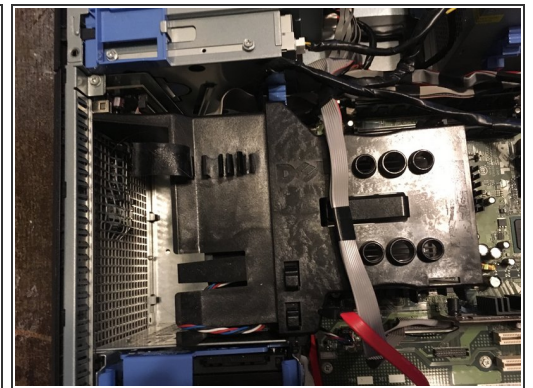
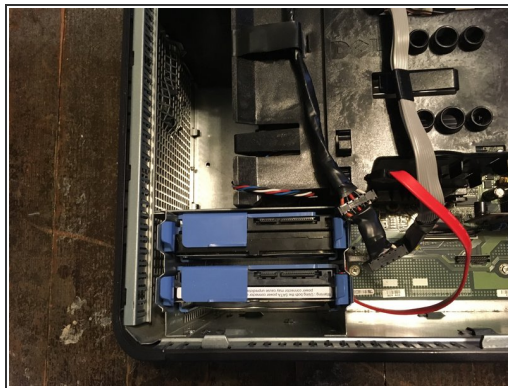
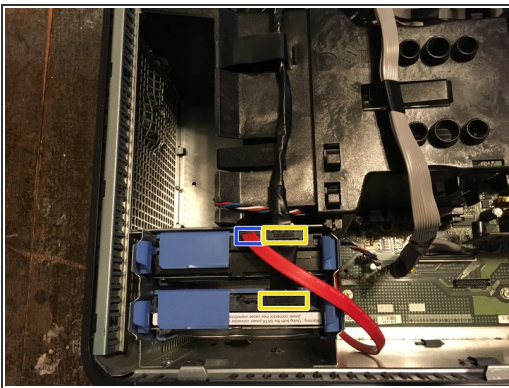


### Step 3 — Dell Optiplex GX620 Side Panel Disassembly



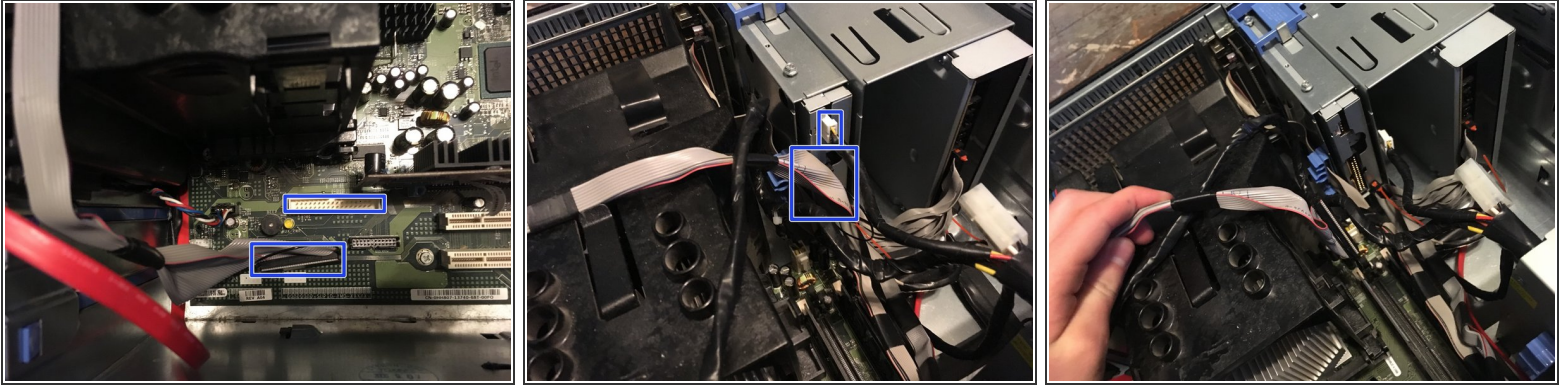
- With the computer standing upright, firmly pull on the tab at the back of the computer.
- When the side panel pops free, gently pull the panel away from the computer.
- ❗ If you have trouble freeing the side panel from the case, you may need to pull the tab a bit harder.

### Step 4 — Unplug your hard drive.



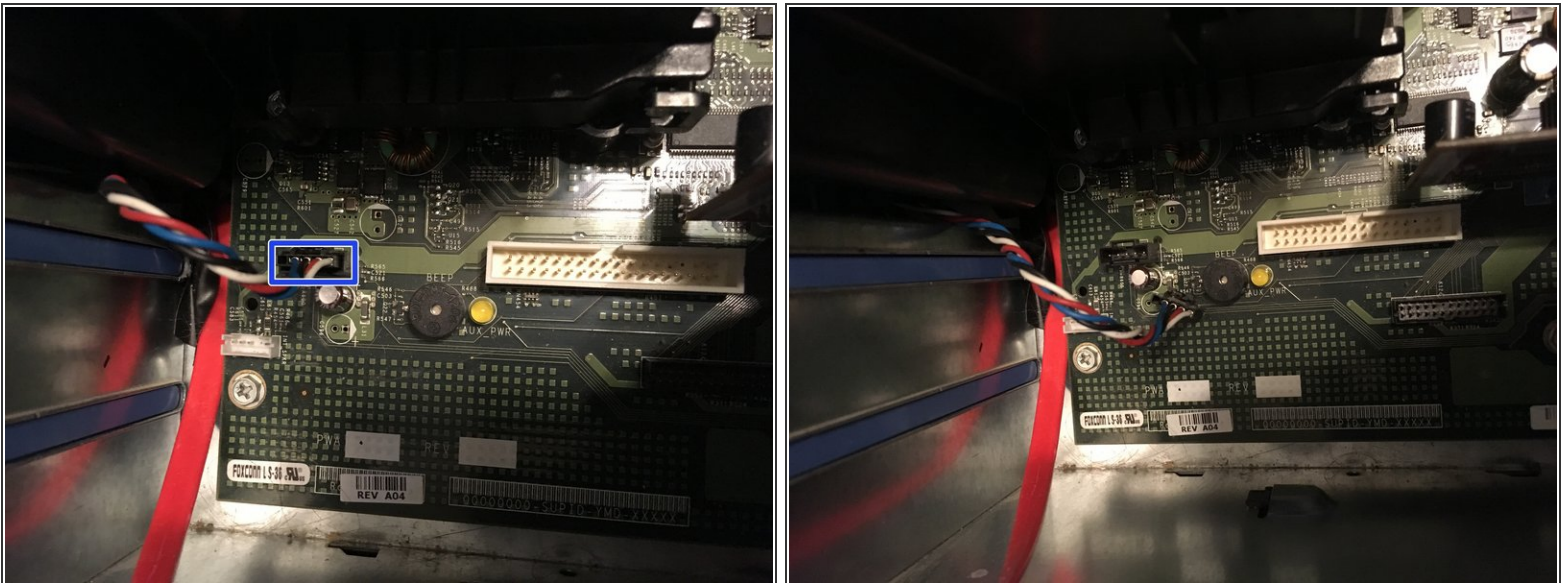
- Remove the SATA power and data cables.
- SATA Power
- SATA Data

## Step 5 — Unplug your floppy drive.



- Unplug the power and data cables.

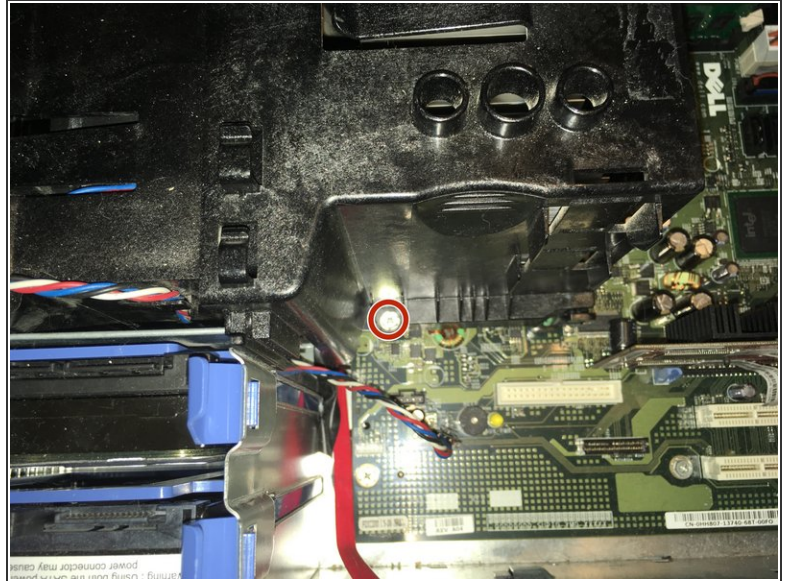
## Step 6 — Unplug the fan.



- Unplug the fan.

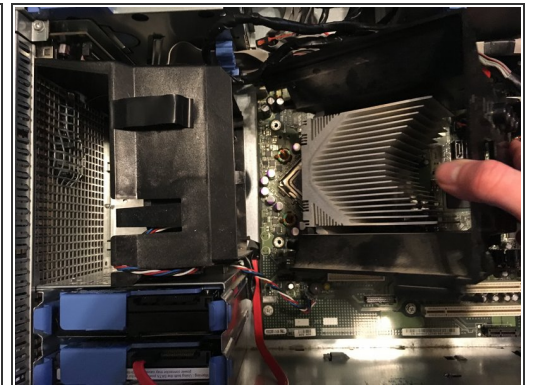


## Step 7



- Remove the two Phillips #2 screws.

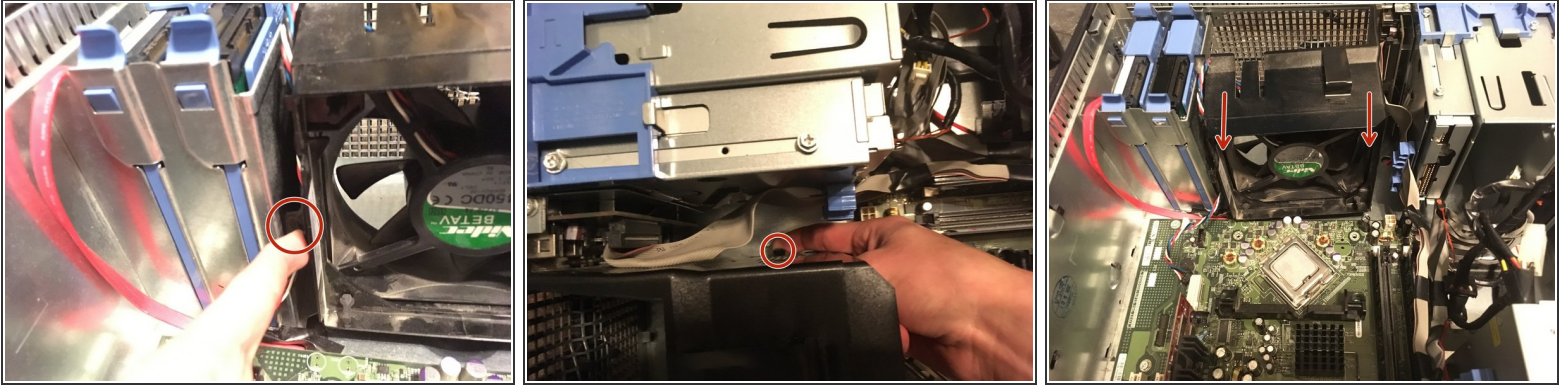
## Step 8 — Remove the heat sink.



- Pull the heat sink up.

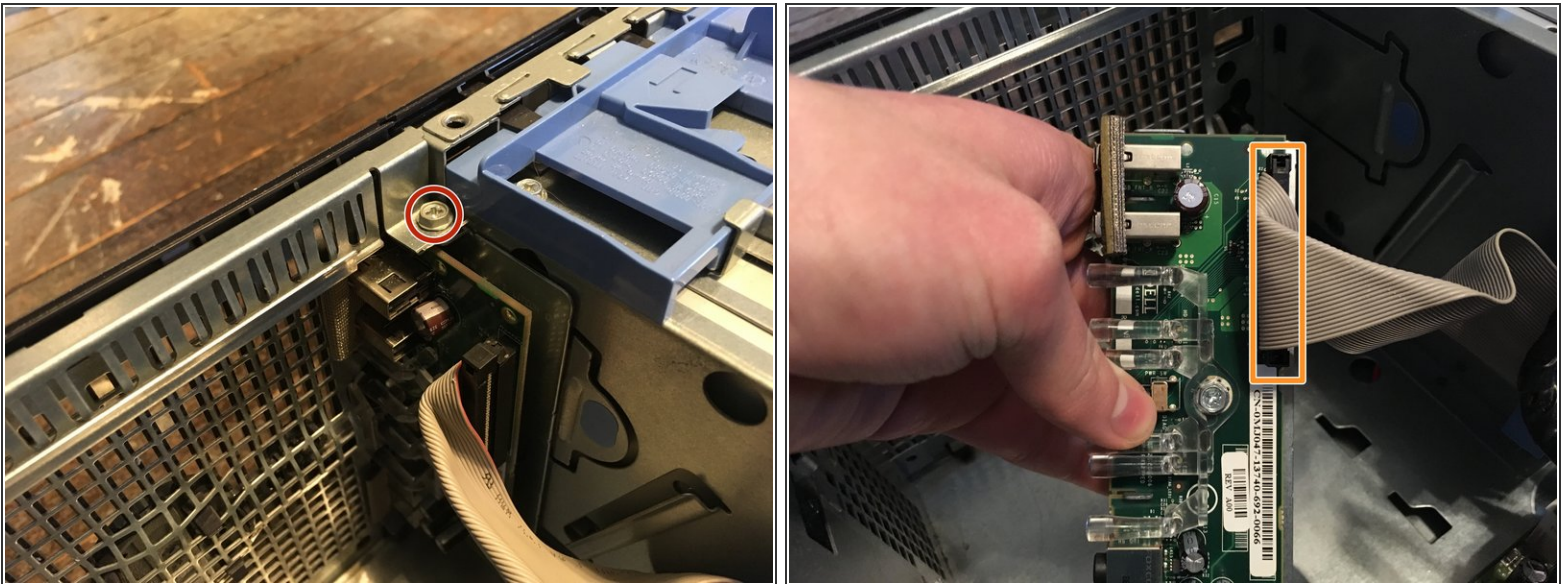


## Step 9



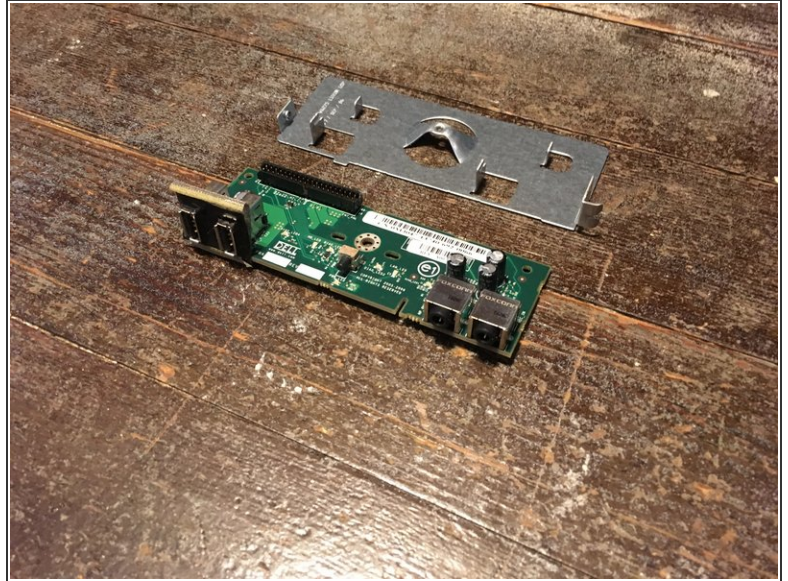
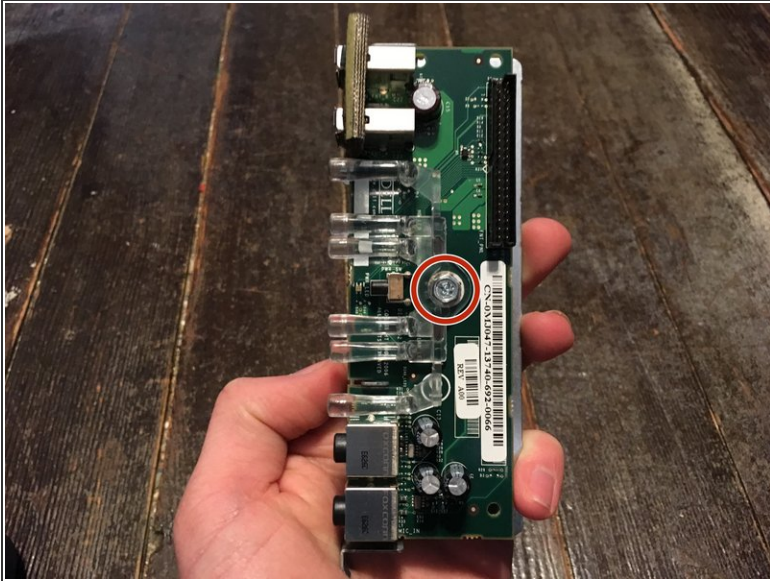
- Pull the two tabs and pull it out.
- This needs a lot of force to take it off.

## Step 10 — Remove front panel



- Remove the one Phillips #2.
- Remove the Data cable.
- ⓘ Taking this cable off will brake some of the plastic thats locking it in. But you can still plug the cable back in.

## Step 11 — Remove the last screw.



- Remove the one Phillips #2 screw.
- Now you can replace it with a new one.

To reassemble your device, follow these instructions in reverse order.