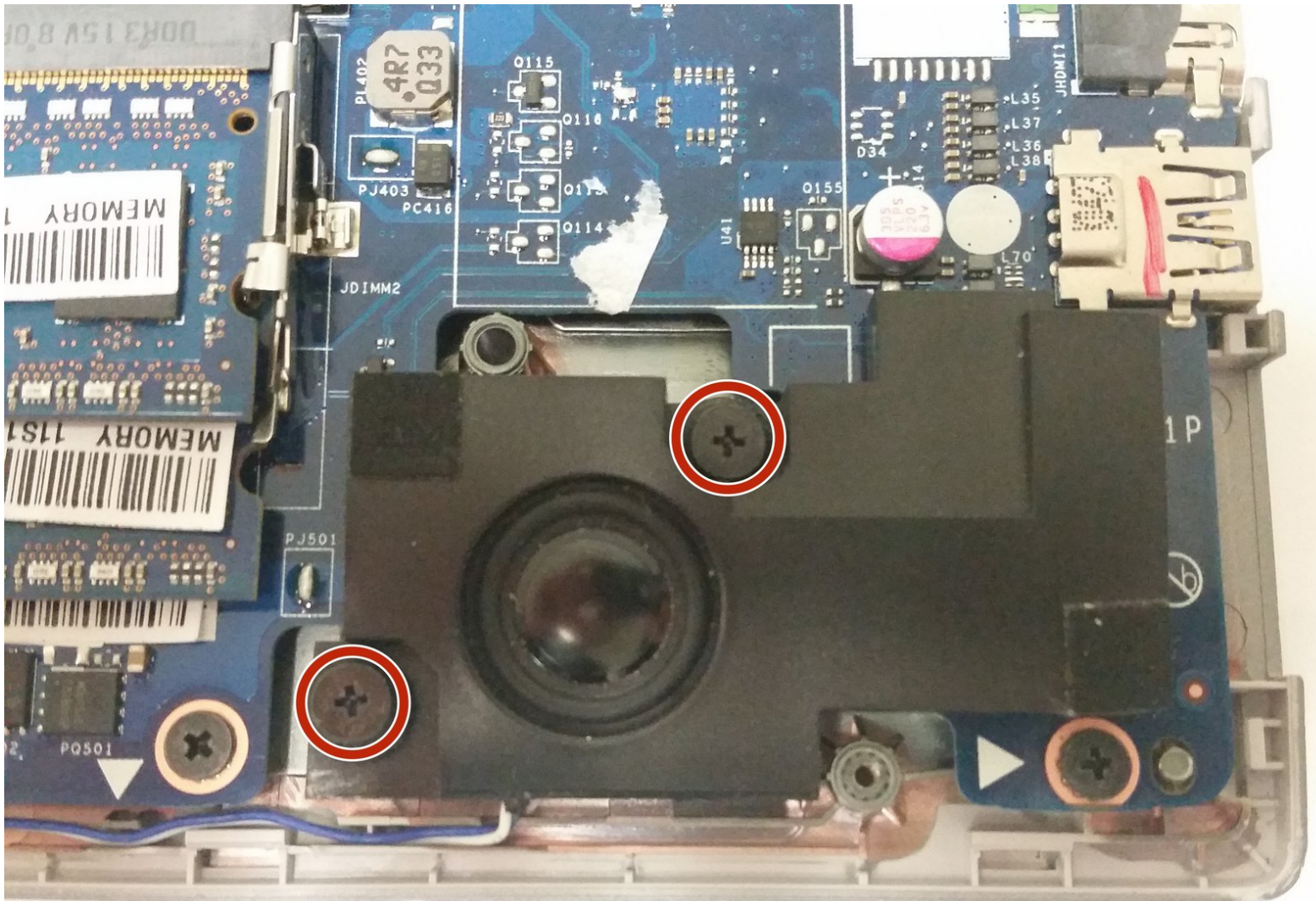




Lenovo IdeaPad P400 Touch Speakers Replacement

This guide will show you how to replace the speakers on your Lenovo IdeaPad P400 Touch laptop.

Written By: Stephanie Botica



INTRODUCTION

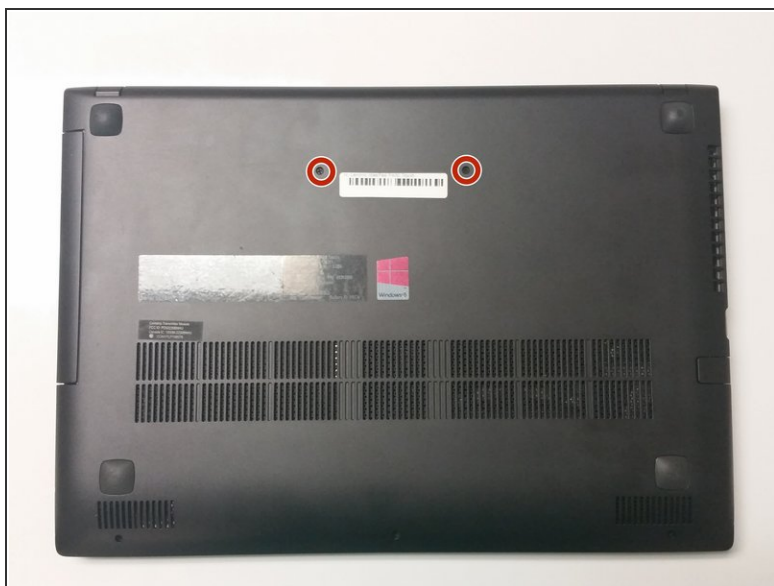
This task will require you to disassemble the laptop and work with small connectors and wires. It is important to make sure that you follow the steps to remove the battery and keep the laptop unplugged while working on it. This will help avoid damaging the electronics.




TOOLS:

- [Phillips #1 Screwdriver](#) (1)
 - [Spudger](#) (1)
-

Step 1 — Keyboard



- Remove the two 14mm Phillips #1 screws that attach the keyboard to the underside of the laptop.

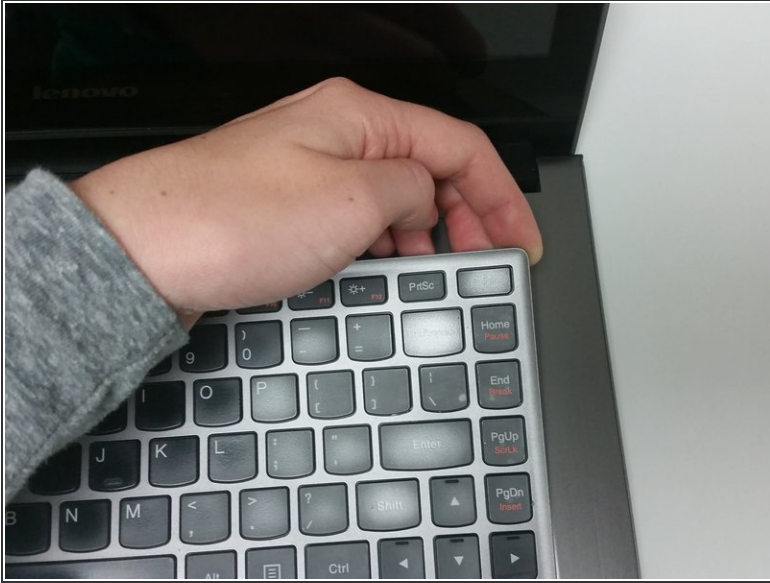
 Use a Phillips #1 screwdriver.

Step 2



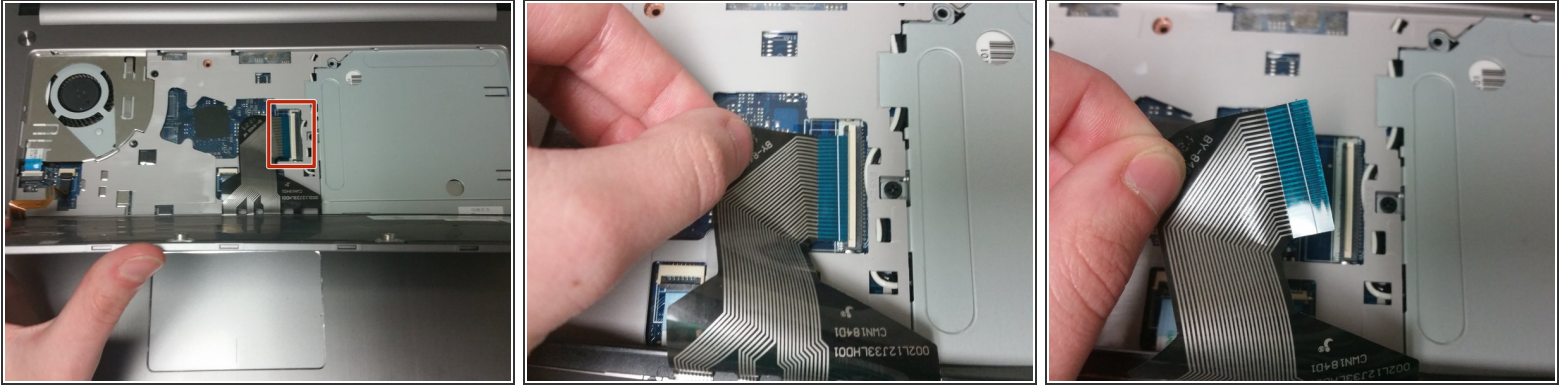
- Flip the laptop over and open it as you would to use it.

Step 3



- Using your hands, lift the top corner of the keyboard, and keep lifting until the keyboard pops out. You will hear clicks as you do this.
- ⓘ If necessary, use the plastic spudger to pry up the corner and then lift the keyboard out with your hands.
- ⚠ Do not lift the keyboard out entirely. It will still be connected to the laptop. Only lift it enough so that it is unseated as shown in the second picture.

Step 4



- Lift the top of the keyboard and flip the keyboard face down so that you can access the connectors underneath it.
 - Using your fingers, unplug the large connector that connects the keyboard to the center of the laptop by sliding the end of the strip out of the socket.
- i** You may need to flip the white plastic bar up with a fingernail to be able to remove the strip.

Step 5



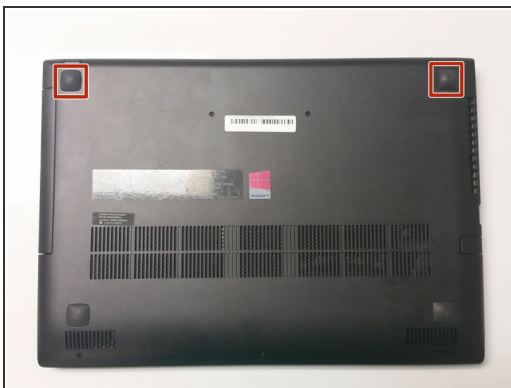
- Using your fingers, unplug the second, smaller connector, located at the lower left hand side of the keyboard by sliding the strip out of the socket.
- i** You may need to flip the white plastic bar up with your fingernail to remove the connector.

Step 6 — Battery



- Flip the laptop so that the bottom faces up.
- You will first need to remove three 7mm Phillips #1 screws from the bottom of the laptop.

Step 7



- Using a spudger, remove the back two feet of the laptop.
- ⓘ You may need to use a metal spudger if you cannot remove them with a plastic one.

Step 8



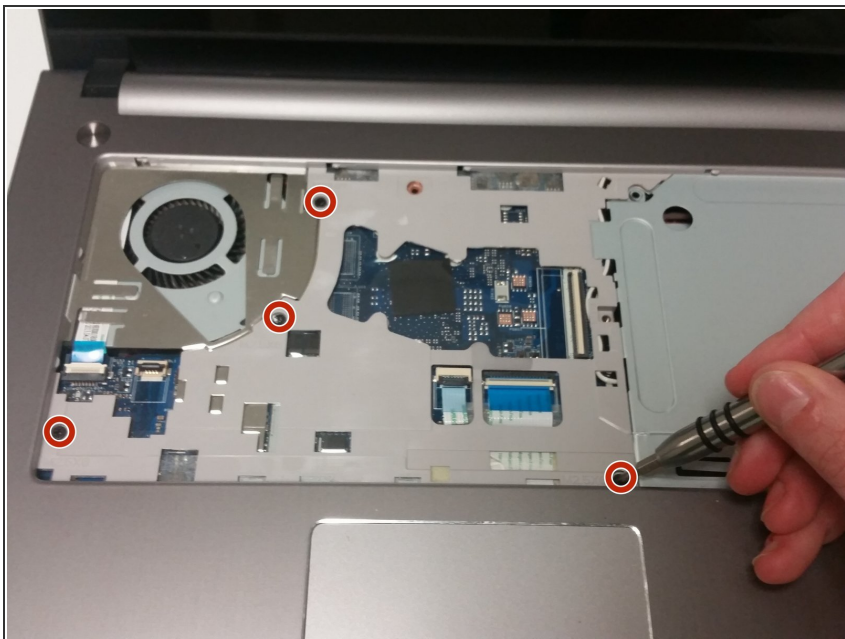
- Remove the 7mm Phillips #1 screw beneath where the foot was. Do this for both sides.

Step 9



- Flip the laptop over and open it.
- Remove the 3mm Phillips #1 screw holding the disc drive in place.
- Remove the disc drive by sliding it out.

Step 10



- Remove four 7mm Phillips #1 interior screws.

Step 11



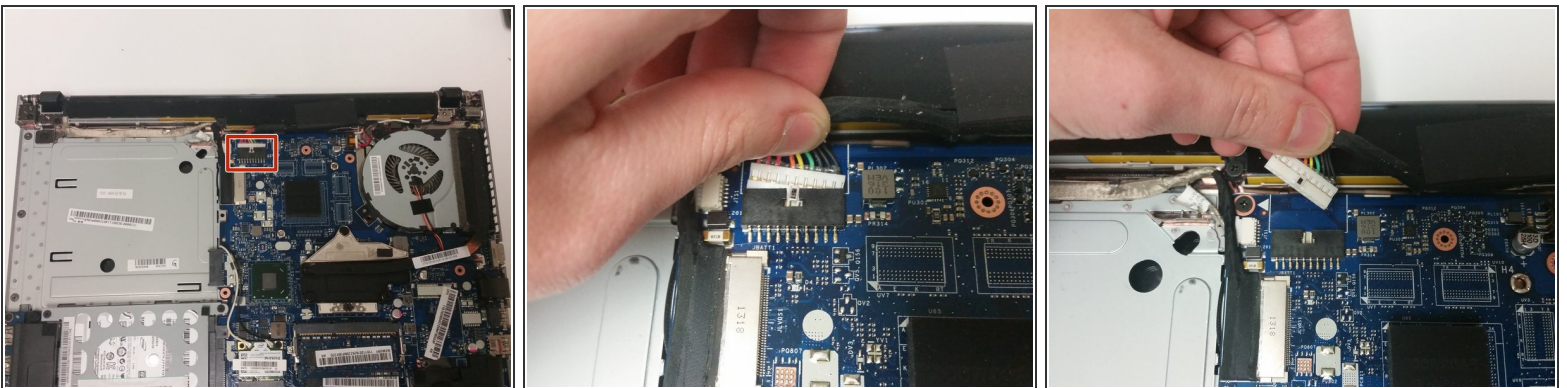
- Close the laptop lid and flip it over.
- Remove three 3mm Phillips #1 screws from beneath where the disc drive was located.

Step 12



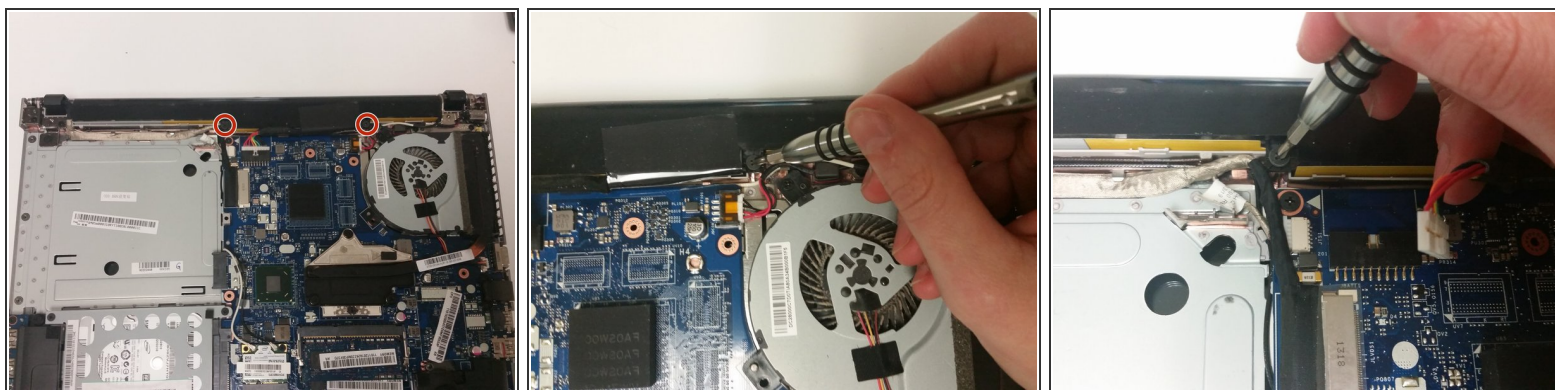
- Using a plastic spudger, pry open the laptop case starting near the disc drive.
 - Continue prying open the case by using the spudger to open it in new areas.
 - Once there is enough space to allow you to grip the case, use your hands to finish removing it.
- i** It may be difficult at first. If the plastic spudger does not work, you can try using a metal one. Using a hand to pull the case open while prying may help as well.

Step 13



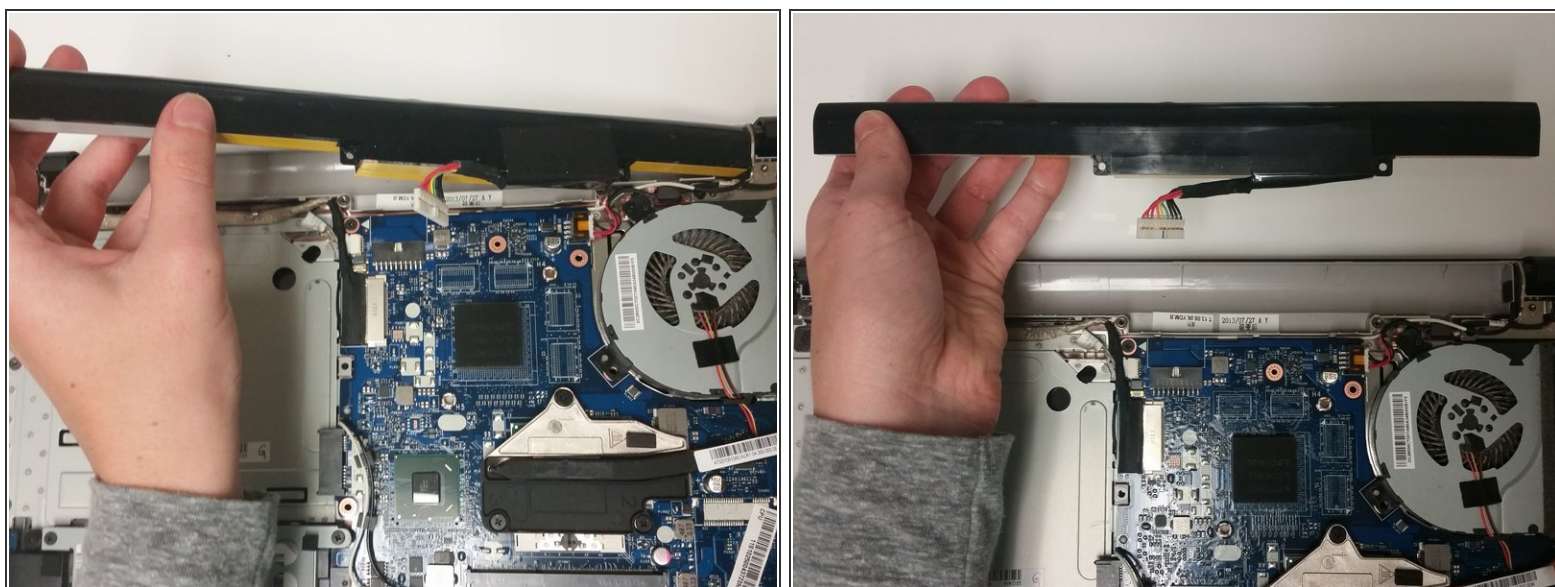
- Using your fingers, unplug the battery from the laptop by taking the plug out of its socket.

Step 14



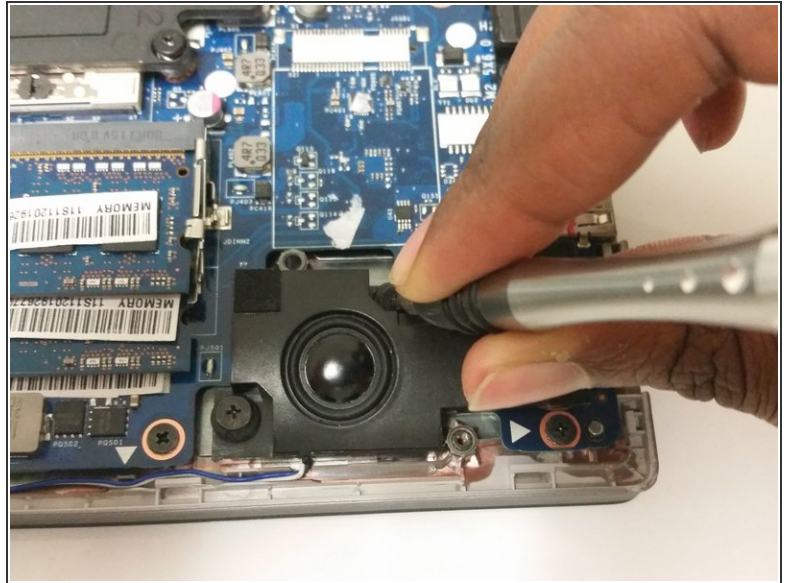
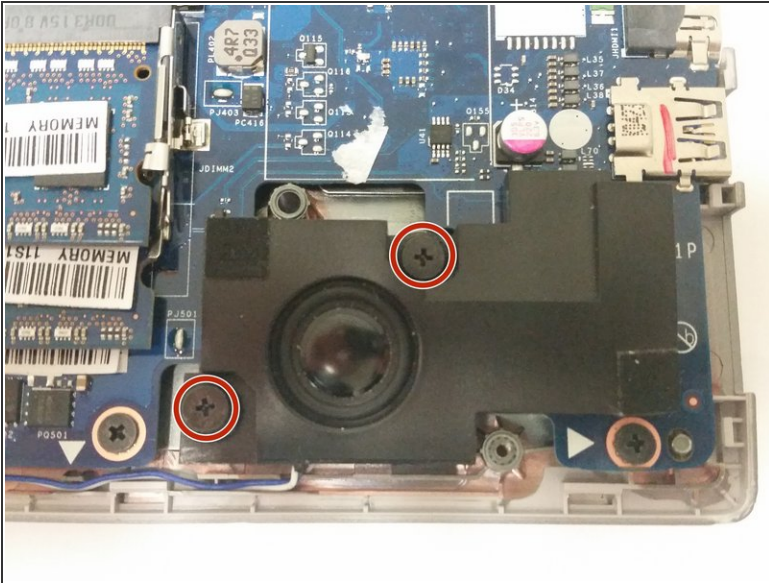
- Unscrew the battery from the laptop by removing two 3mm Phillips #1 screws.

Step 15



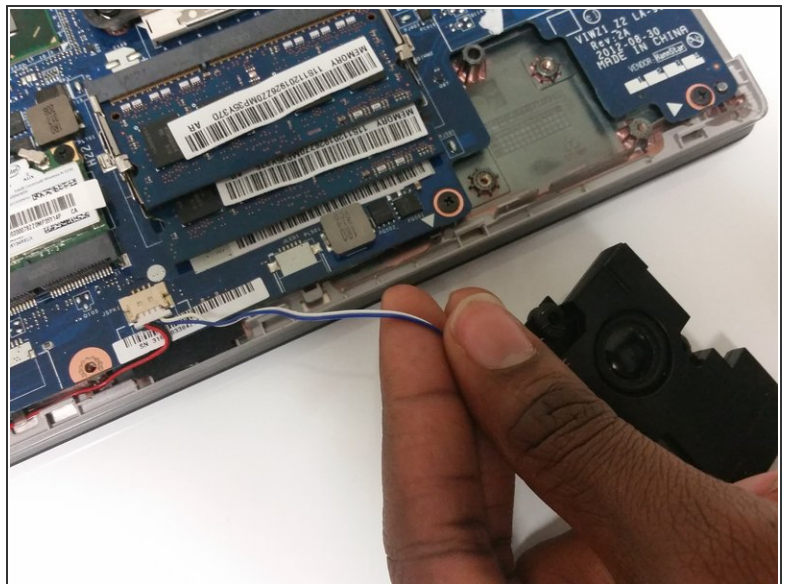
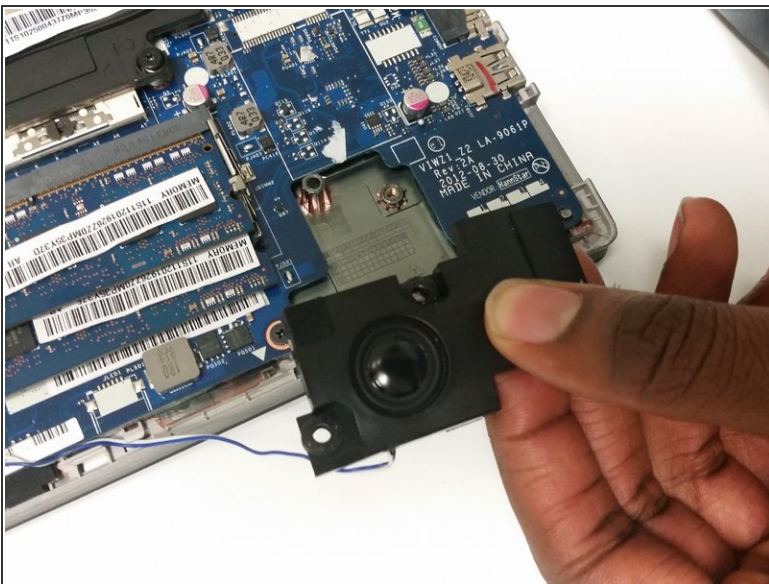
- Using your hand, remove the battery from the laptop by lifting one side and then pulling it out of its slot.

Step 16 — Speakers



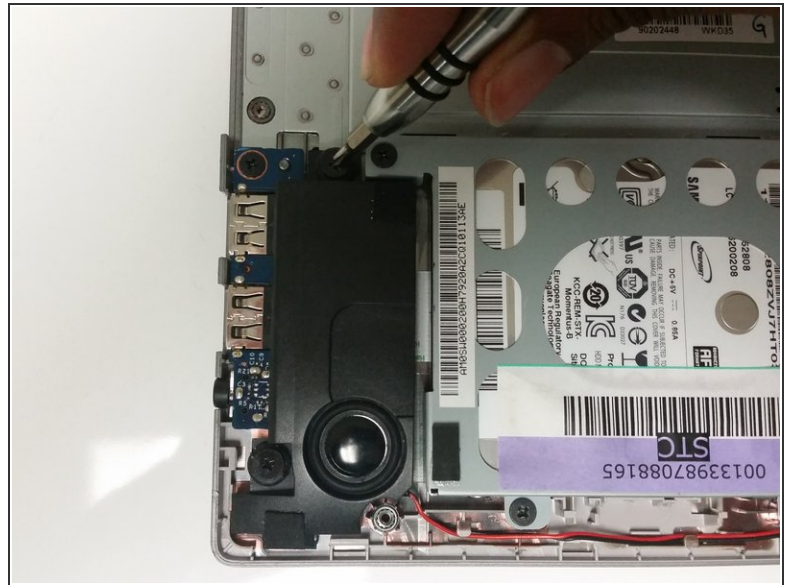
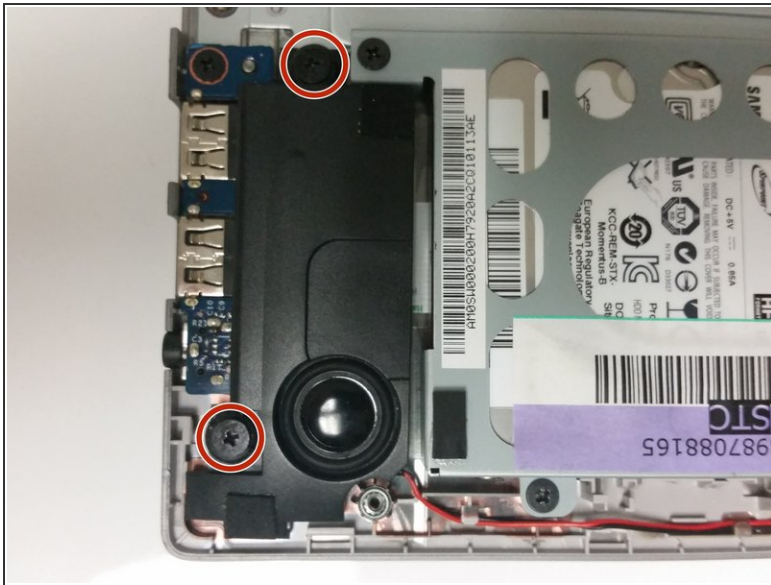
- Remove the two 8mm Phillips #1 screws holding the right speaker in place.

Step 17



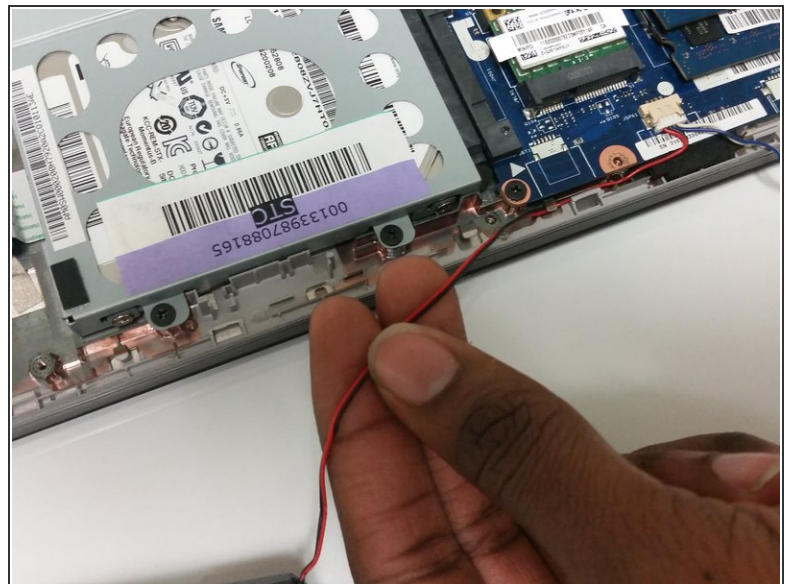
- Remove the right speaker.
- Gently pull the blue and white wire out of its plastic clips.

Step 18



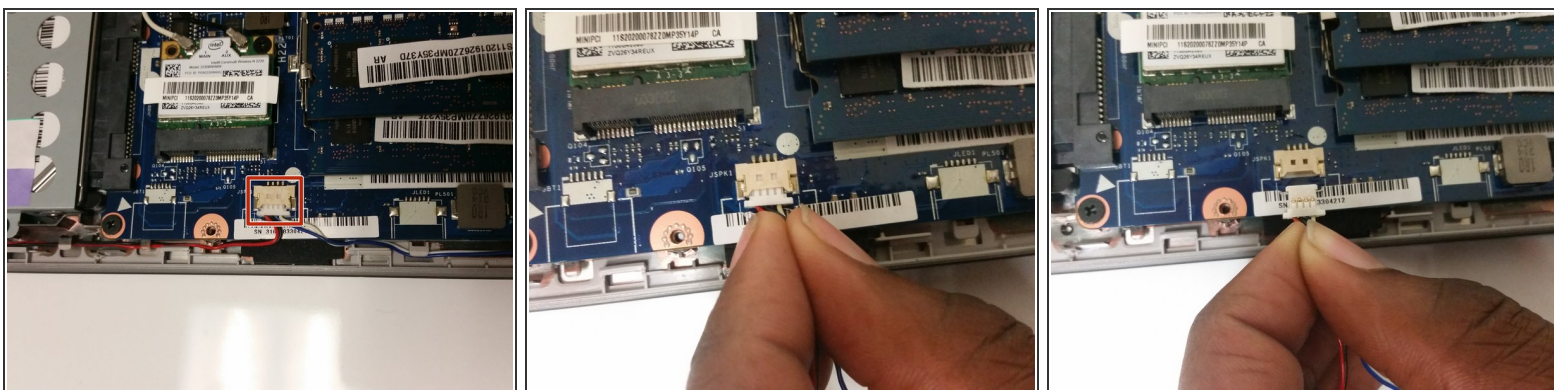
- Remove the two 8mm Phillips #1 screws holding the left speaker in place.

Step 19



- Remove the left speaker.
- Gently pull the red and black wire out of its plastic clips.

Step 20



- Using your fingers, remove the speaker connector from its port by sliding it out.

To reassemble your device, follow these instructions in reverse order.