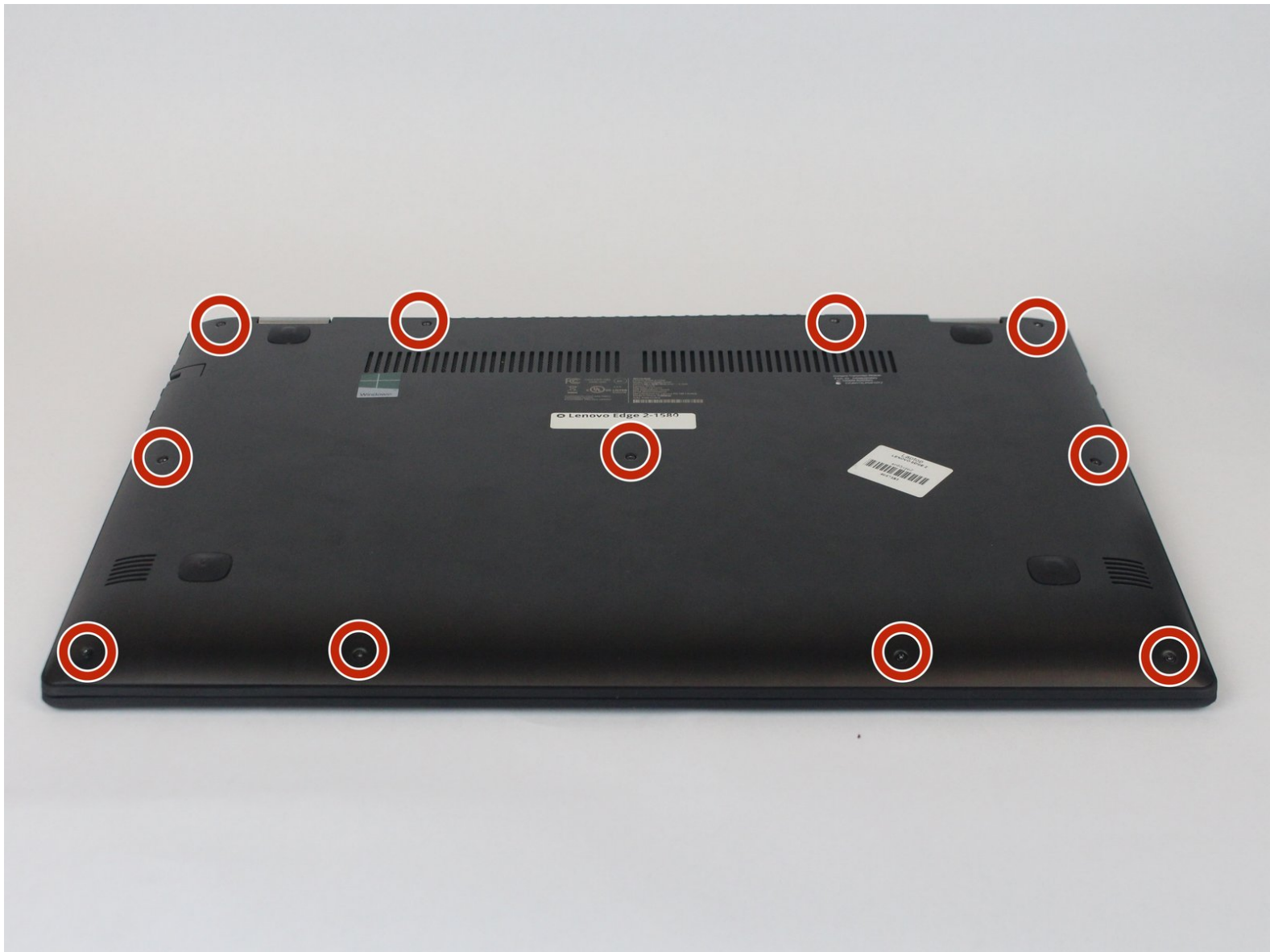




Lenovo Edge 2-1580 Battery Replacement

This guide describes the steps to replacing the Lenovo Edge 2-1580 battery that may be due to no longer holding charge, faulty charger or a faulty battery.

Written By: Julian Escallon



INTRODUCTION

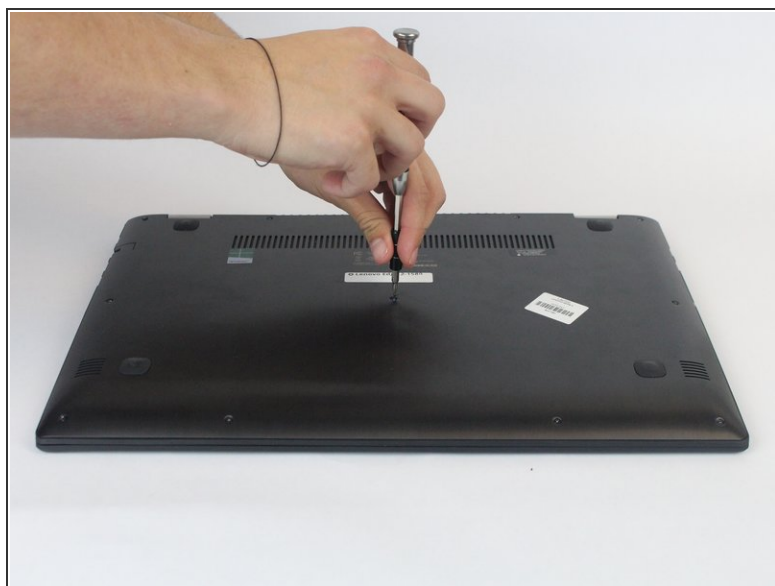
The guide will show you how to remove the battery from the laptop. The removal of the battery is necessary to do any work inside the laptop for safety purposes.



TOOLS:

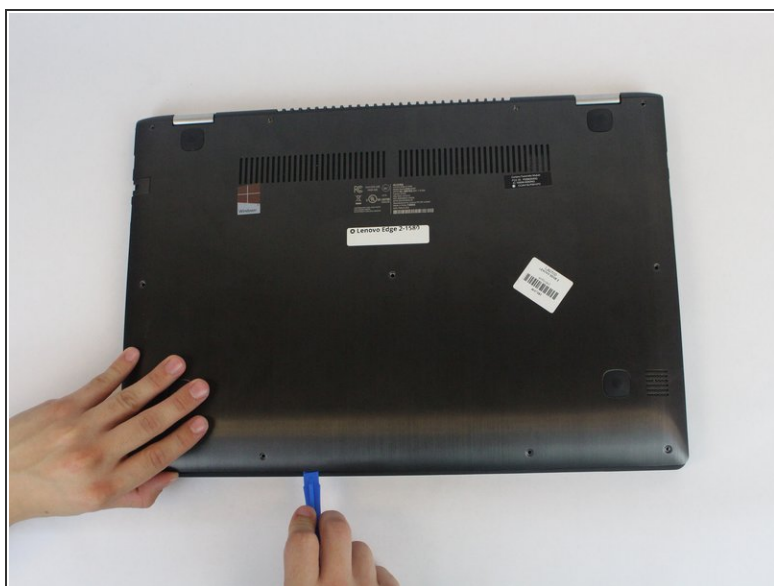
- [Phillips #0 Screwdriver](#) (1)
 - [iFixit Opening Tools](#) (1)
-

Step 1 — Battery



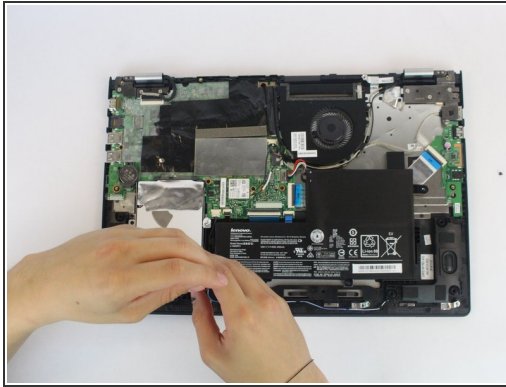
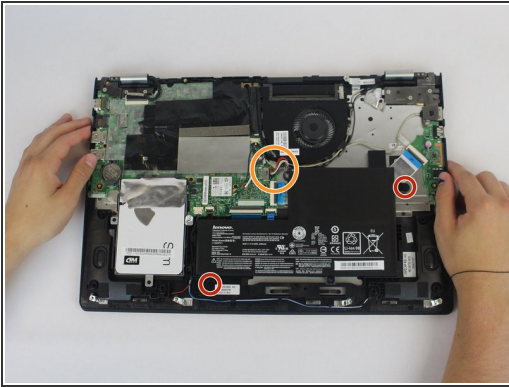
- Using the Phillips #0 screwdriver, remove the (11) eleven 5.4 mm screws from the back panel.

Step 2



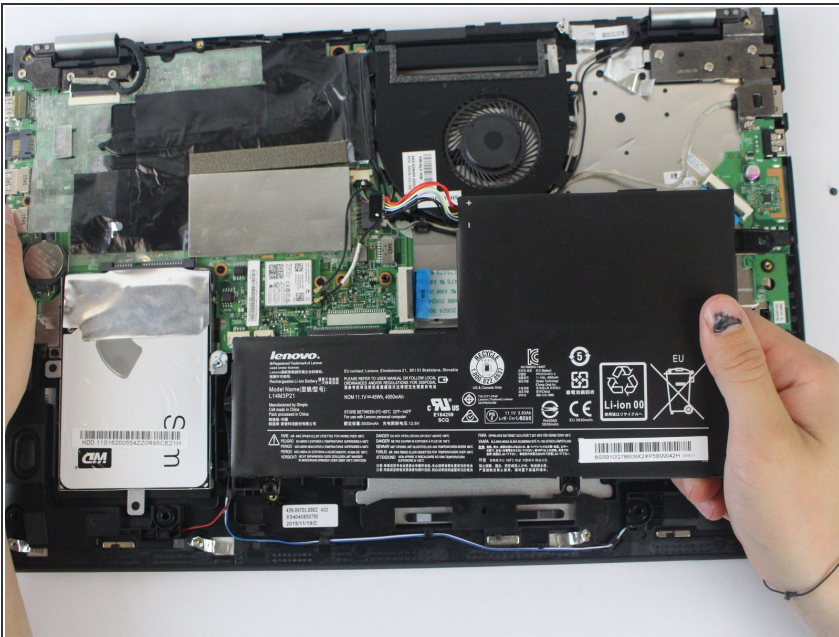
- Using a plastic opening tool, pull out the back panel from the laptop.

Step 3



- Using the Phillips #0 screwdriver, remove the (2) 5.4 mm screws.
- Disconnect the battery connector from the motherboard.

Step 4



- Pull the battery outward and remove it from the rest of the laptop.

To reassemble your device, follow these instructions in reverse order.