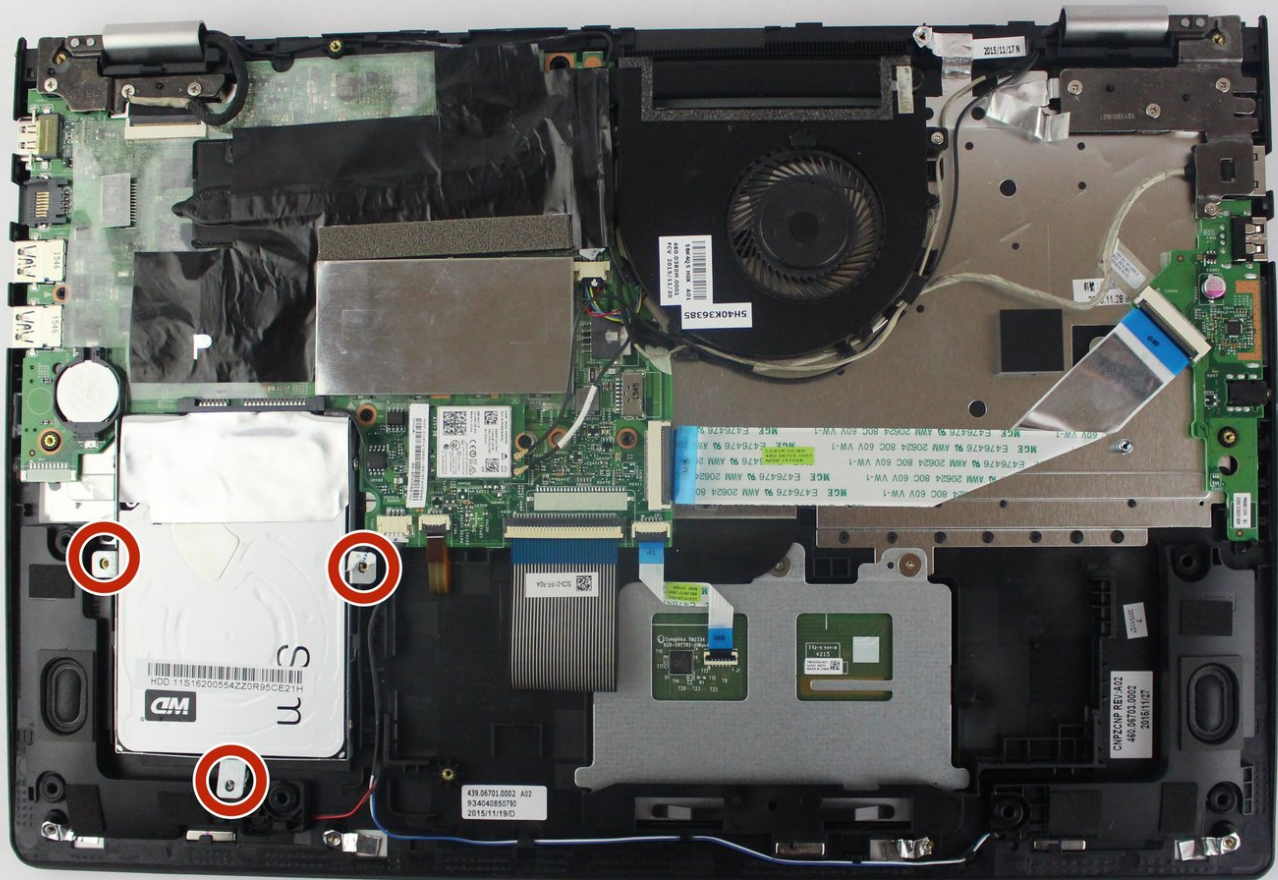




Lenovo Edge 2-1580 Storage Replacement

This guide describes the steps to replacing the Lenovo Edge 2-1580 storage.

Written By: Julian Escallon



INTRODUCTION

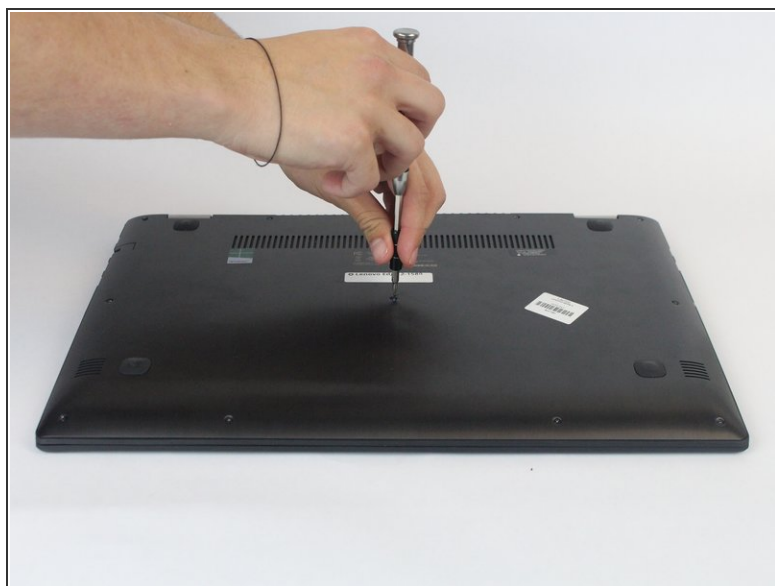
The guide will show you how to remove the storage hard drive unit that comes with the laptop. It is compatible with any 2.5" storage solutions like a SSD or HDD.



TOOLS:

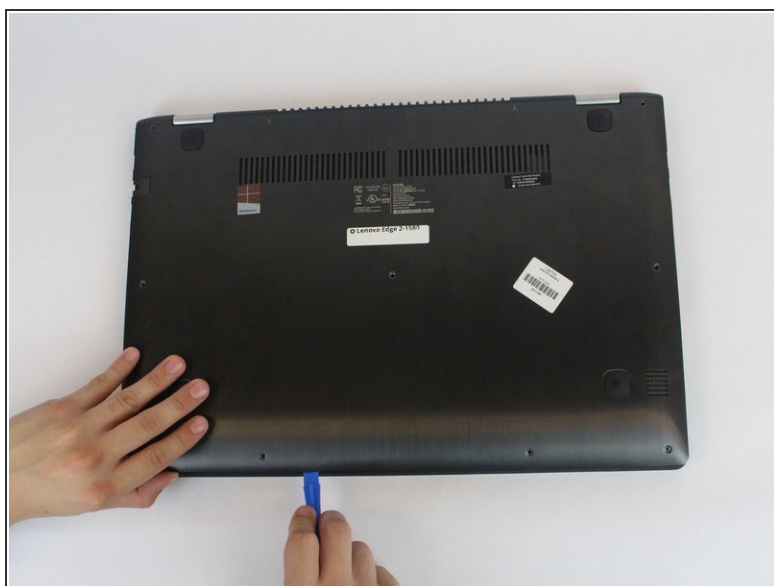
- [Phillips #0 Screwdriver](#) (1)
 - [iFixit Opening Tools](#) (1)
-

Step 1 — Battery



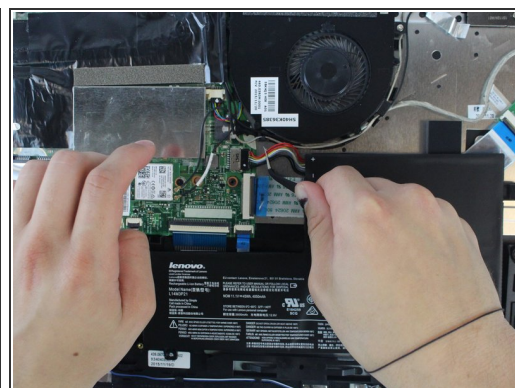
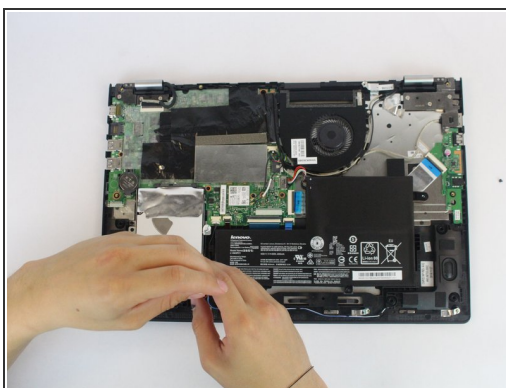
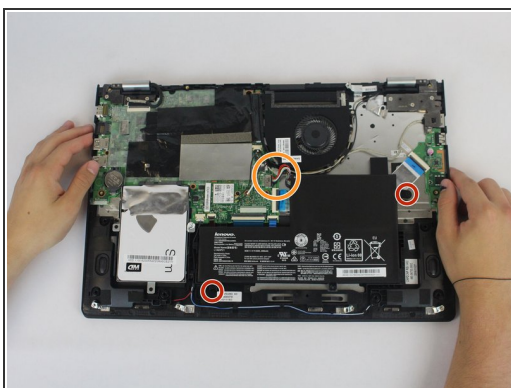
- Using the Phillips #0 screwdriver, remove the (11) eleven 5.4 mm screws from the back panel.

Step 2



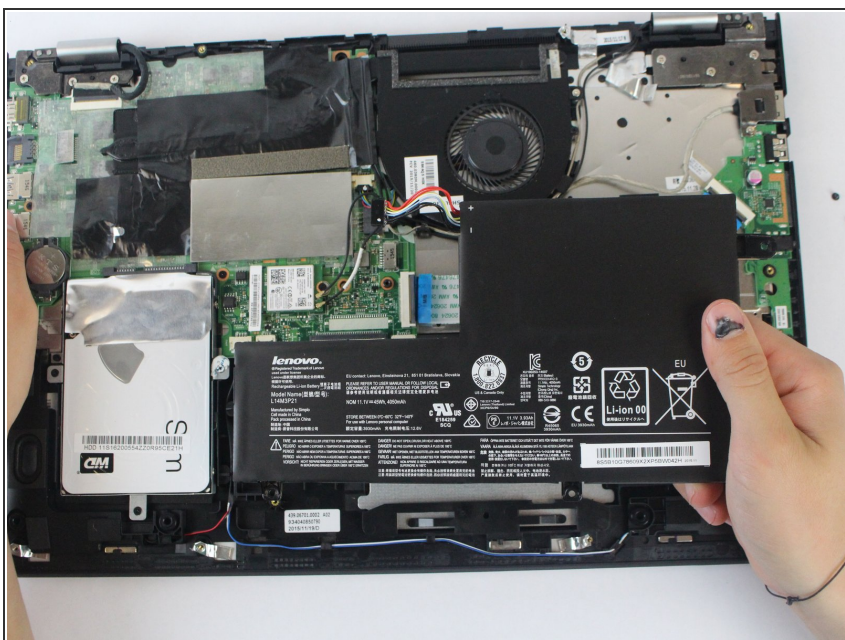
- Using a plastic opening tool, pull out the back panel from the laptop.

Step 3



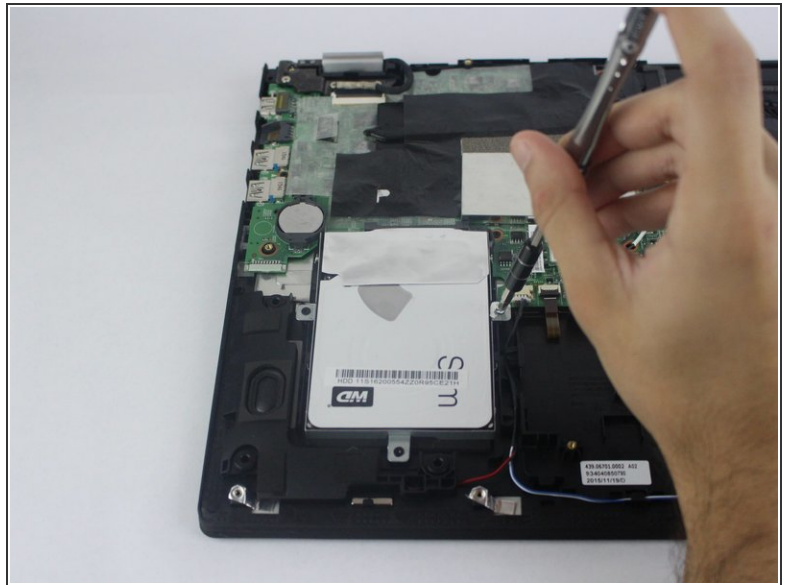
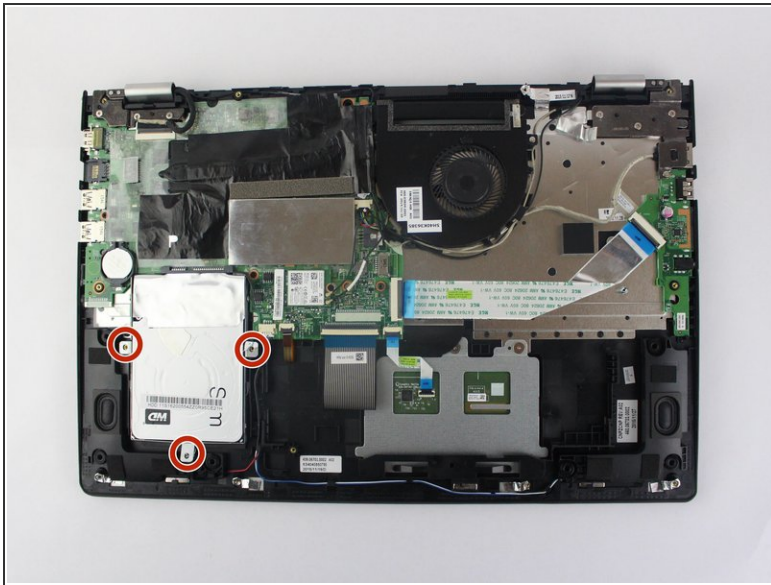
- Using the Phillips #0 screwdriver, remove the (2) 5.4 mm screws.
- Disconnect the battery connector from the motherboard.

Step 4



- Pull the battery outward and remove it from the rest of the laptop.

Step 5 — Hard drive



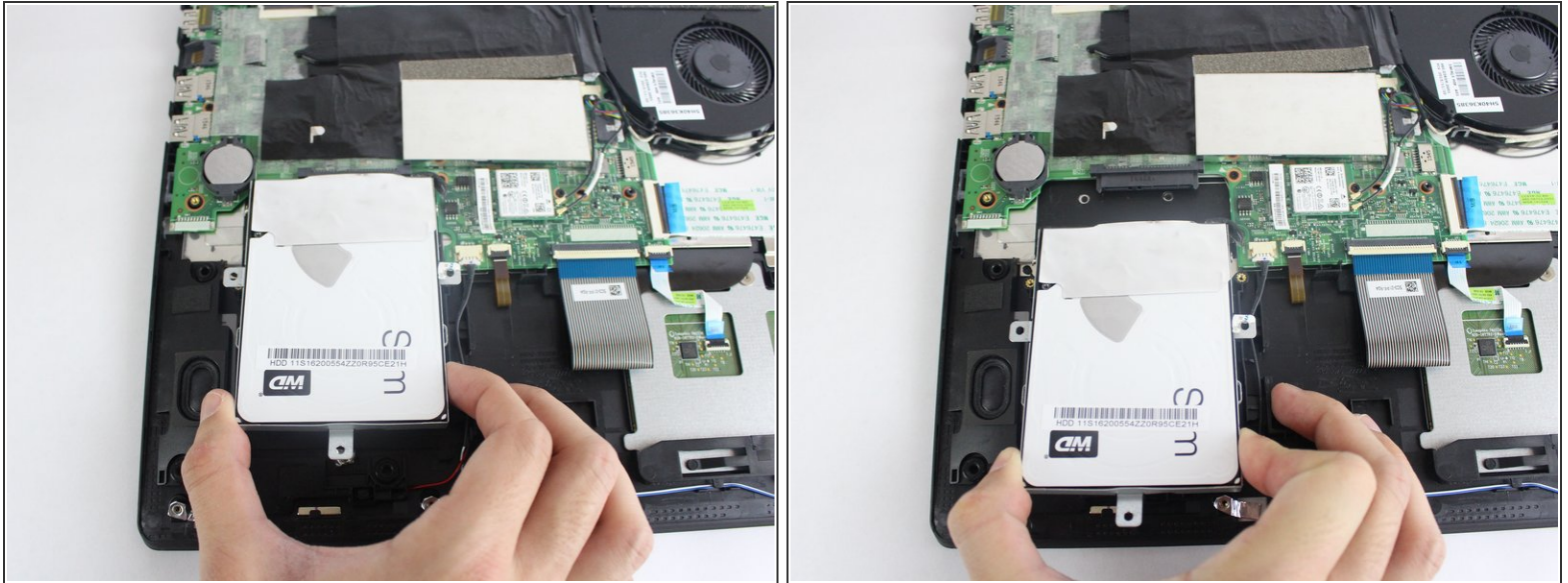
- Using the Phillips #0 screwdriver, remove the (3) three 3 mm screws.

Step 6



- Slide the drive away from the connector by applying pressure on the two side tabs where screws were removed. Use a plastic opening tool as a lever to lift the drive out.

Step 7



- Carefully, using your hand, remove the hard drive from the laptop.

To reassemble your device, follow these instructions in reverse order.