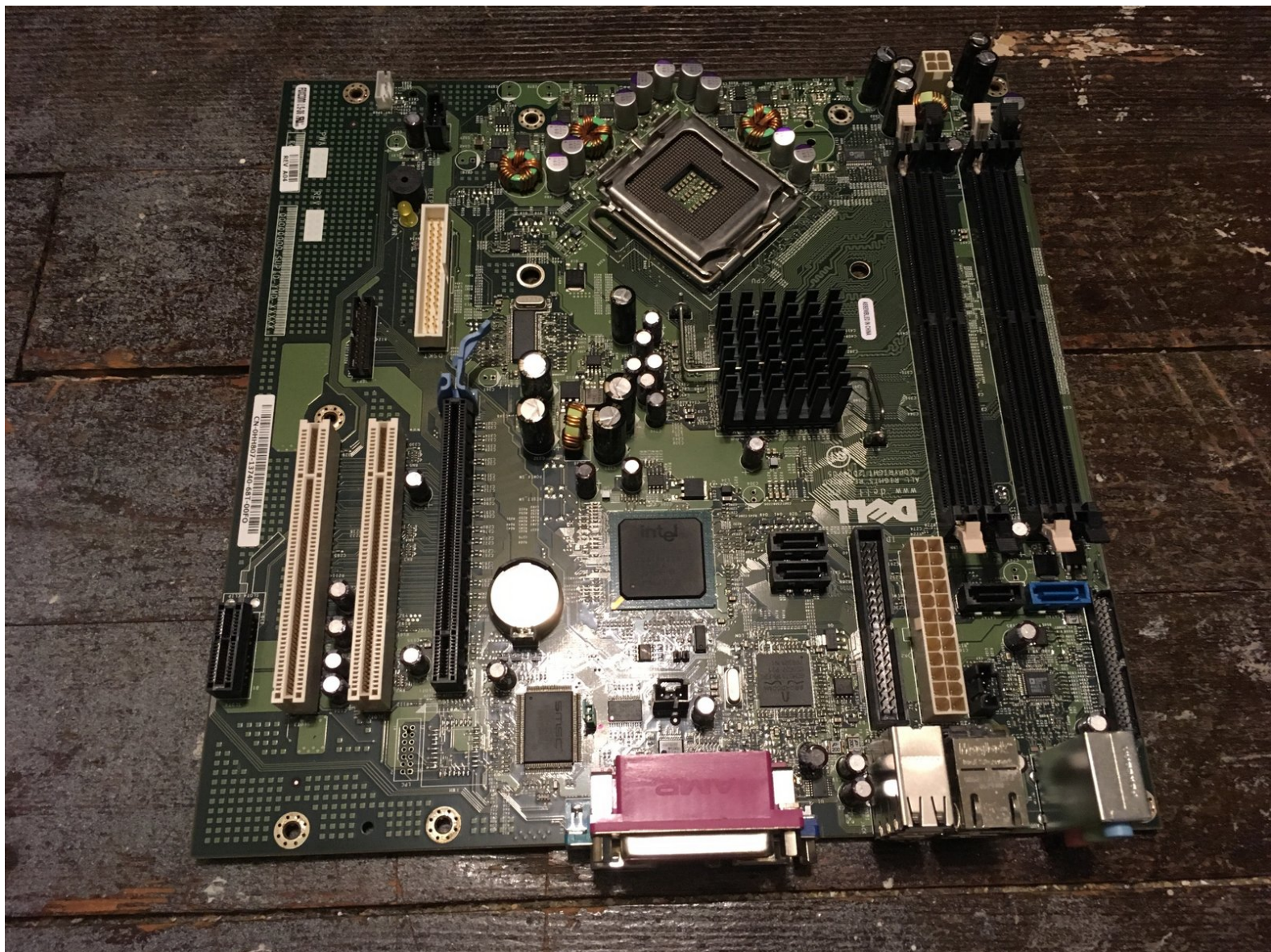




Dell Optiplex GX620 Motherboard Replacement

This guide show you how to remove and replace the motherboard in a Dell Optiplex GX620.

Written By: Padraic Hoselton



INTRODUCTION

This guide show you how to remove and replace the motherboard in a Dell Optiplex GX620.



TOOLS:

- [Phillips #2 Screwdriver](#) (1)



PARTS:

- [Thermal Paste](#) (1)

Step 1 — How to unplug and discharge before repair



- Power down your PC and remove the power cord from the back.

Step 2



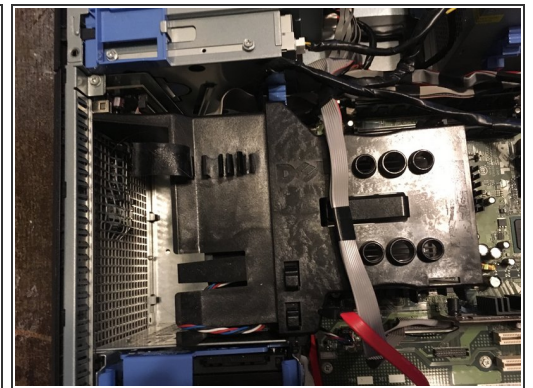
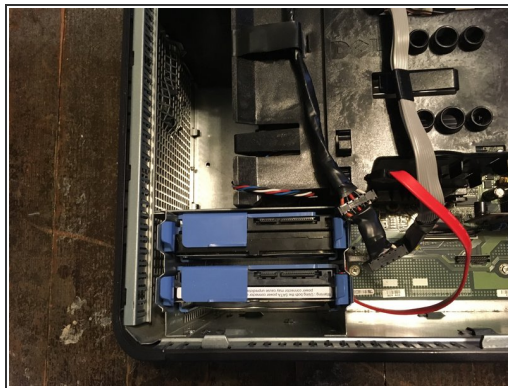
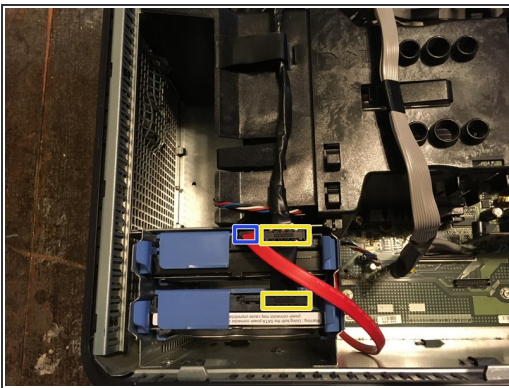
- Press and hold the power button for about 10 seconds, then release.
 - ⓘ This helps drain any remaining power stored in the capacitors, so that you can safely work on the internal components.

Step 3 — Dell Optiplex GX620 Side Panel Disassembly



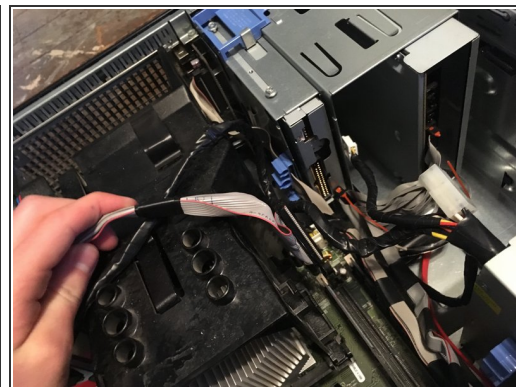
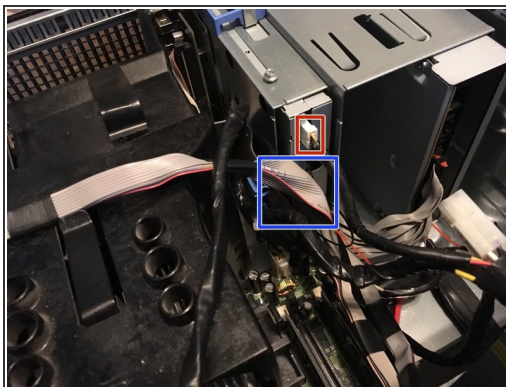
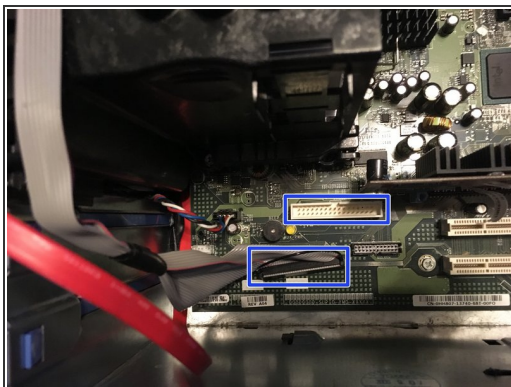
- With the computer standing upright, firmly pull on the tab at the back of the computer.
- When the side panel pops free, gently pull the panel away from the computer.
- ❗ If you have trouble freeing the side panel from the case, you may need to pull the tab a bit harder.

Step 4 — Now unplug your hard drives power and data cables.



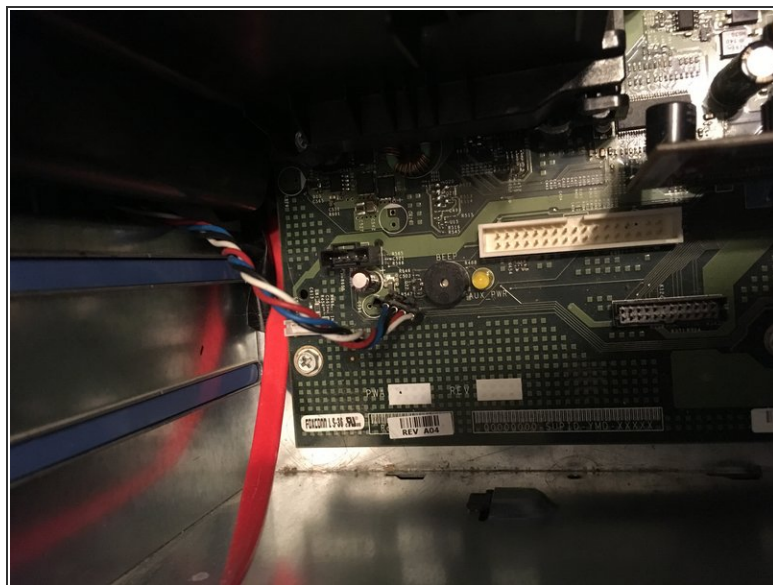
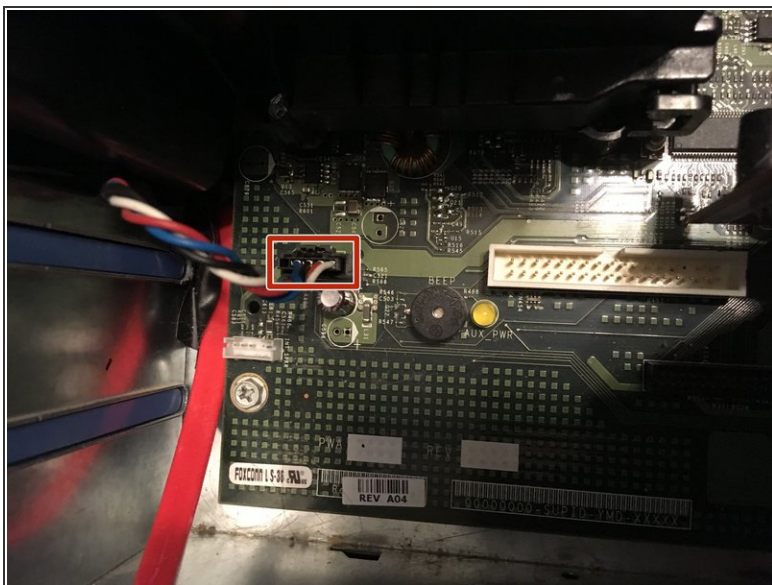
- Move the cables out of your way.
- SATA Power
- SATA Data

Step 5 — Unplug your floppy drive on the motherboard and the drive.



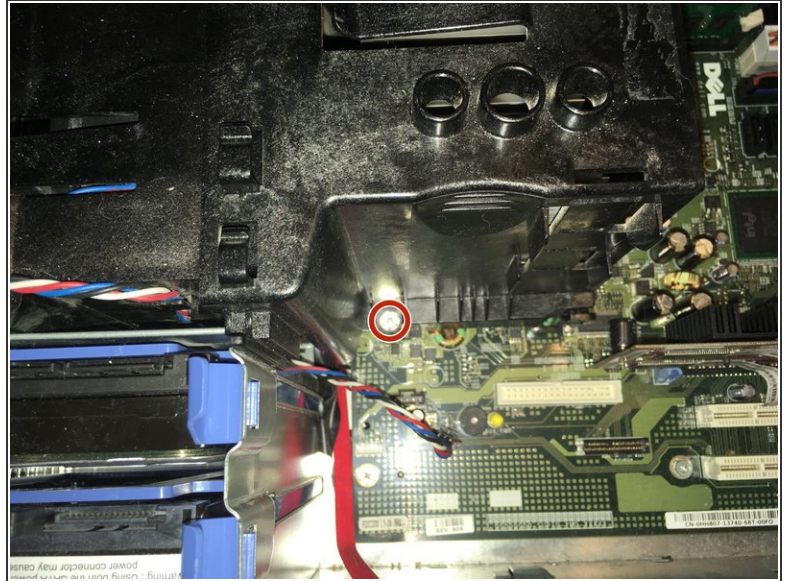
- Unplug the power cable
- Unplug the data cable

Step 6 — Disconnect CPU fan.



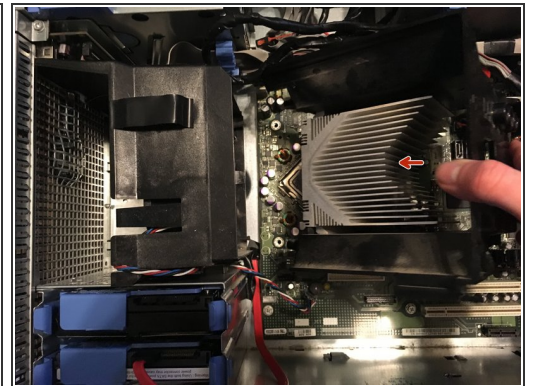
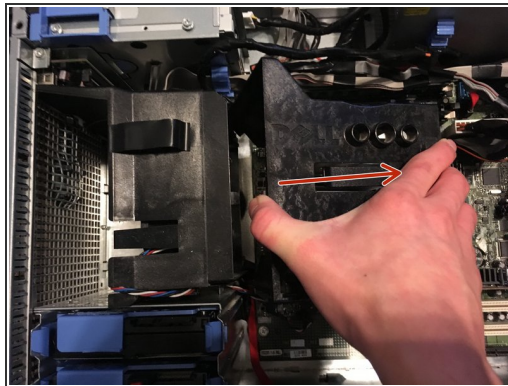
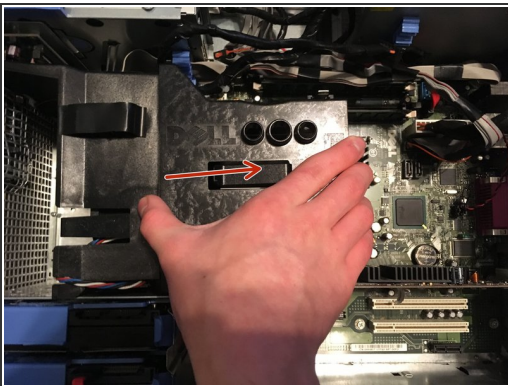
- Unplug the fan that is on the motherboard.

Step 7



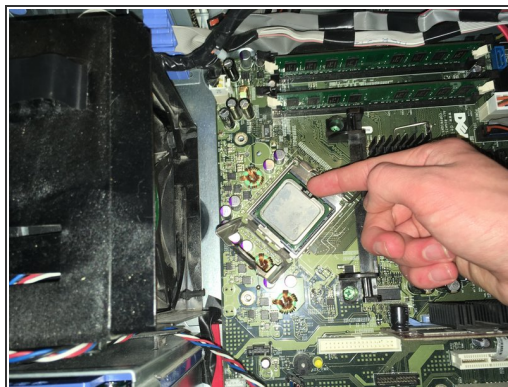
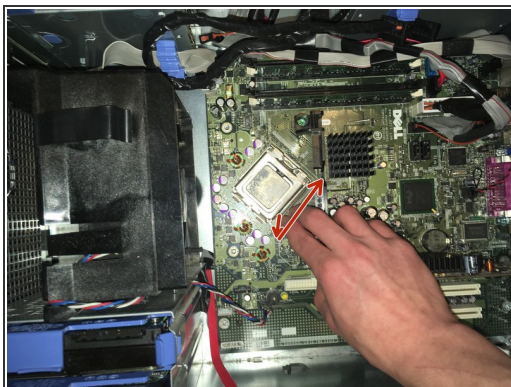
- There is two Phillips #2 screws that need to be removed.
- ⓘ The two screws have springs that keep them there.

Step 8 — Now it's time to remove the heat sink.



- Lift the heat sink.

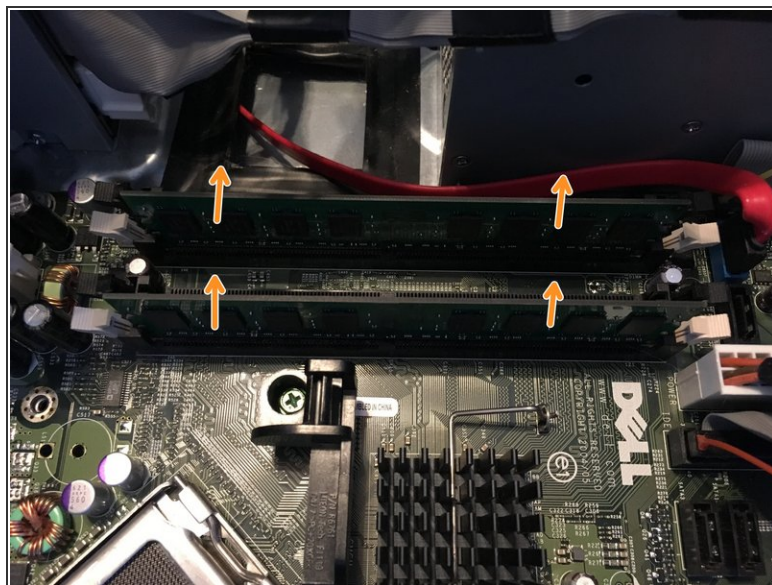
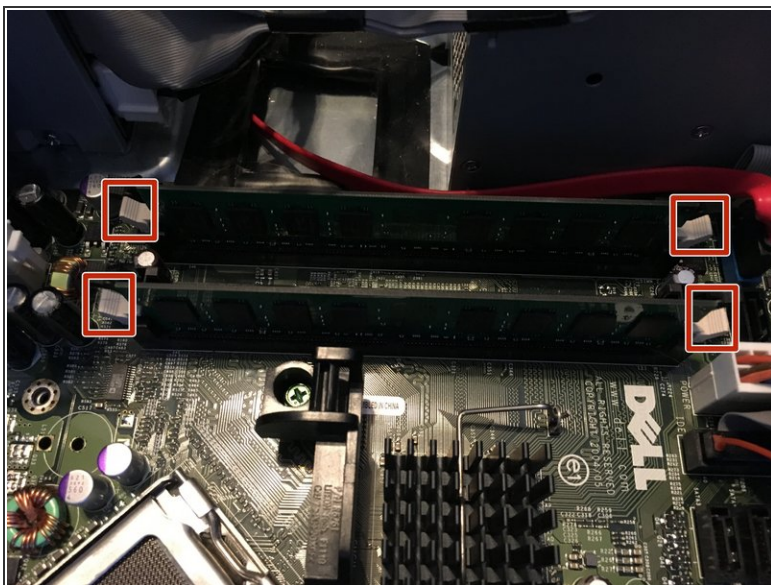
Step 9 — CPU removal.



- Push and release tap on it. And then take the CPU out.

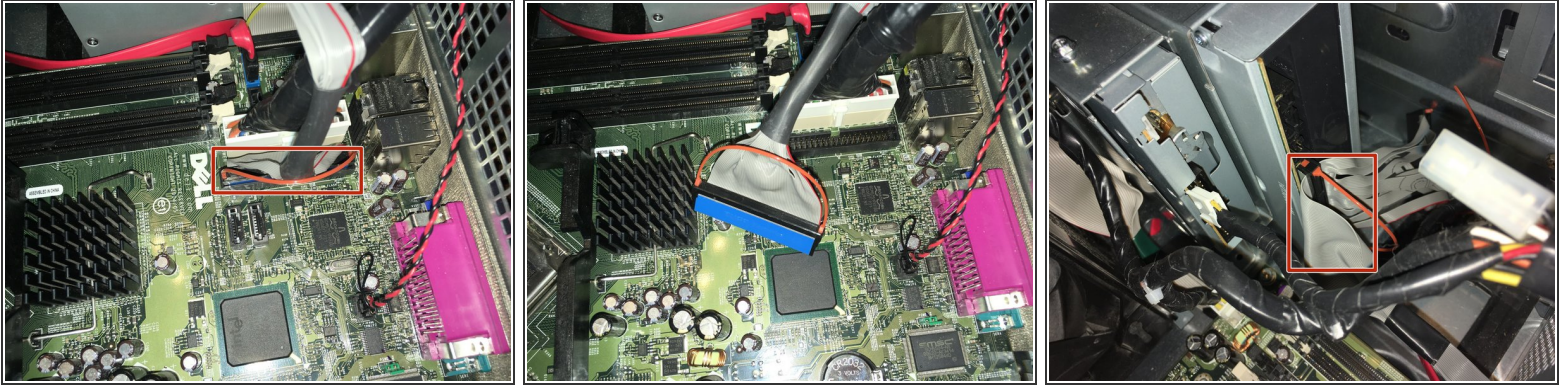
☑ Remember to put new thermal paste on the CPU.

Step 10 — Remove the ram



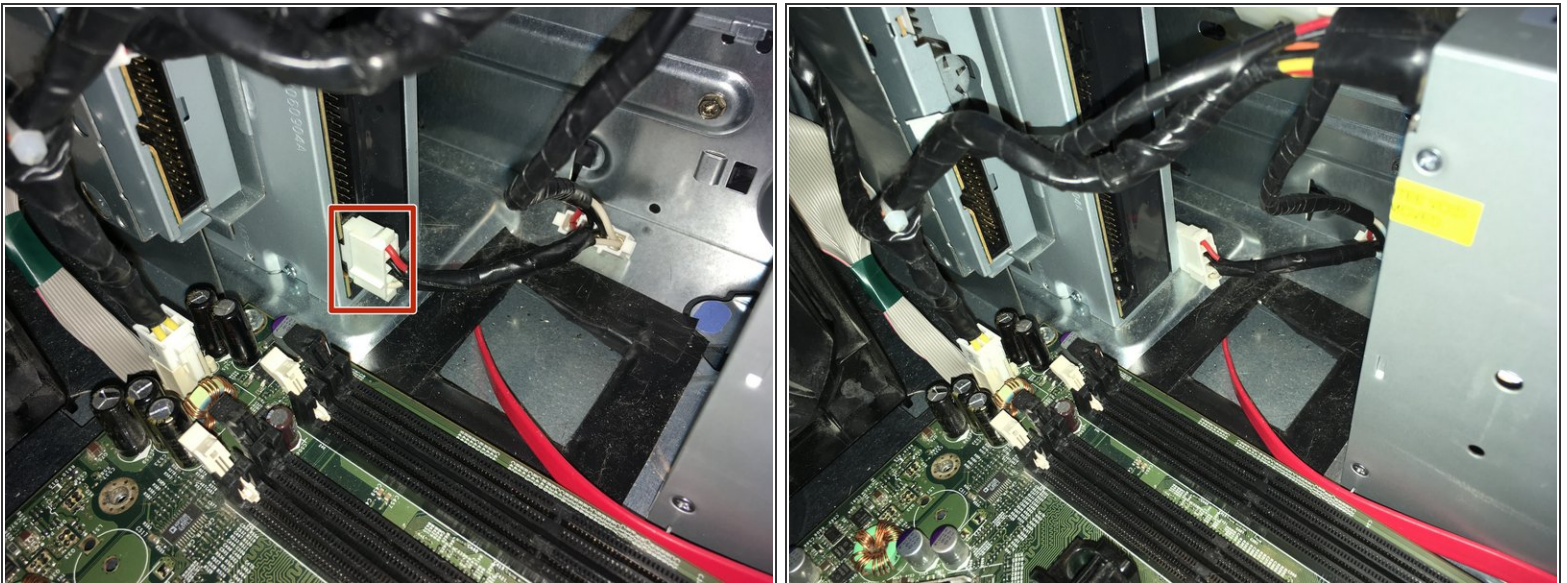
- Push the tabs down.
- Pull the cards out.

Step 11 — Remove the DVD cable



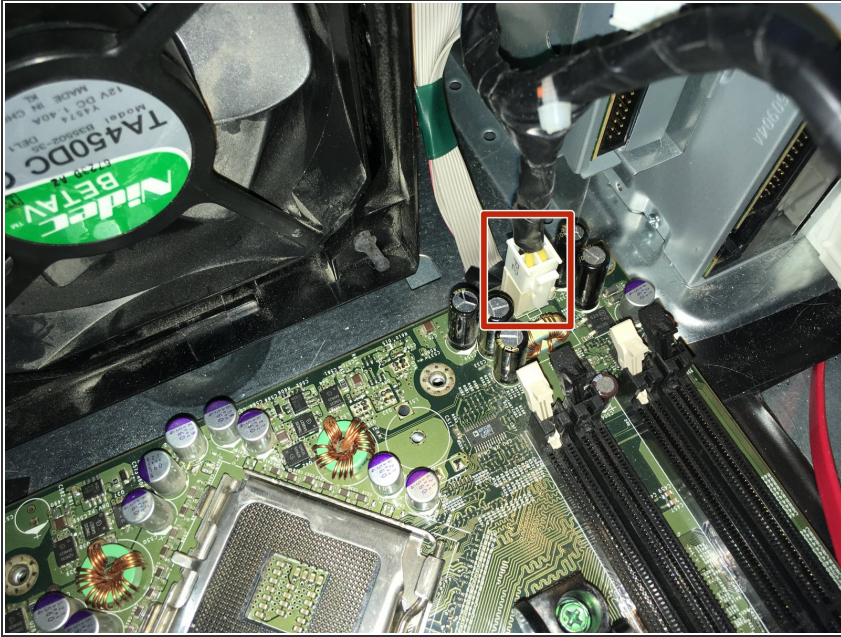
- Pull the two cables from the DVD drive off.

Step 12



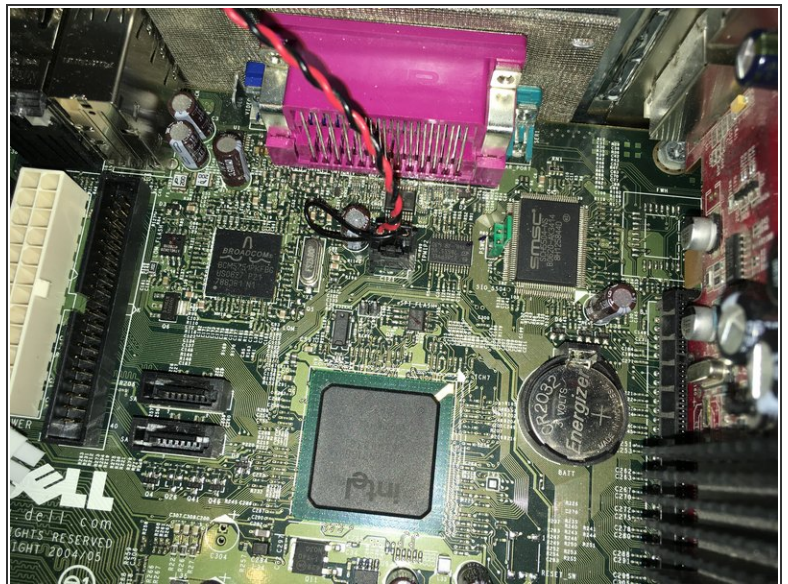
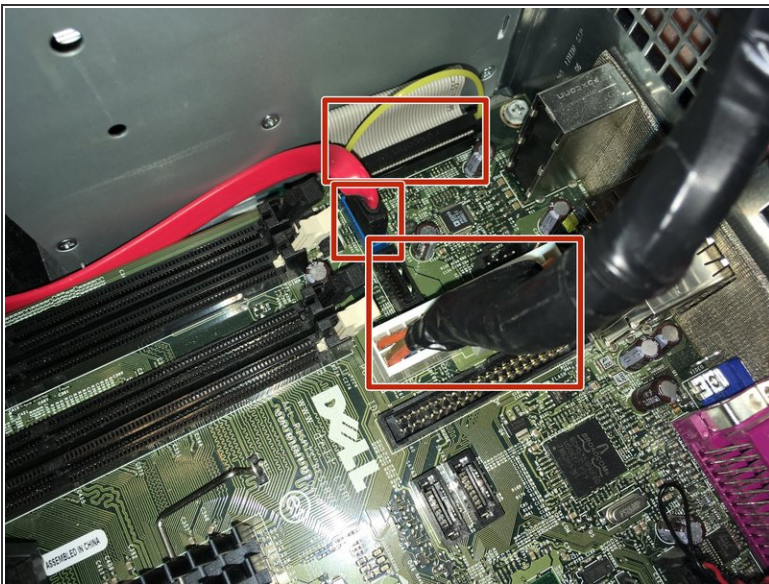
- Pull the power cable from the DVD drive off.

Step 13 — Remove the CPU power



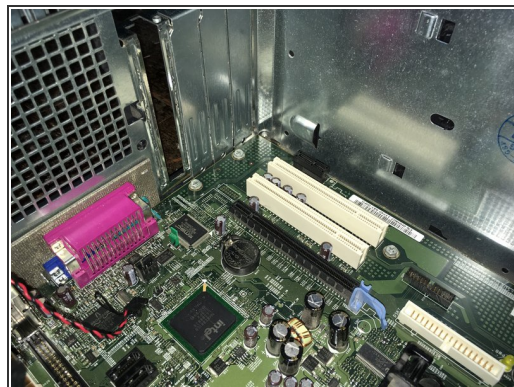
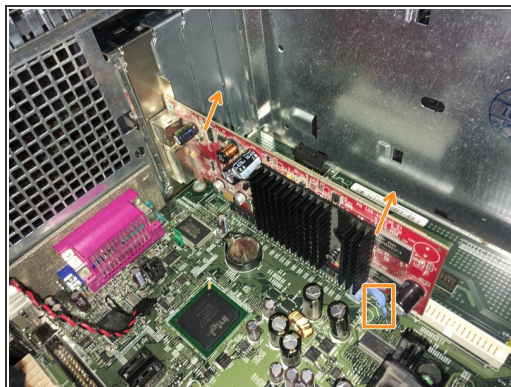
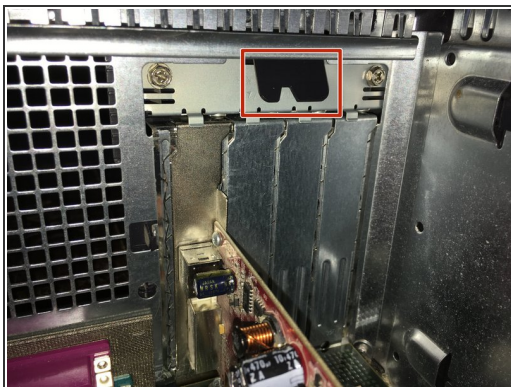
- Pull the CPU power cable off.

Step 14 — Remove the three cables



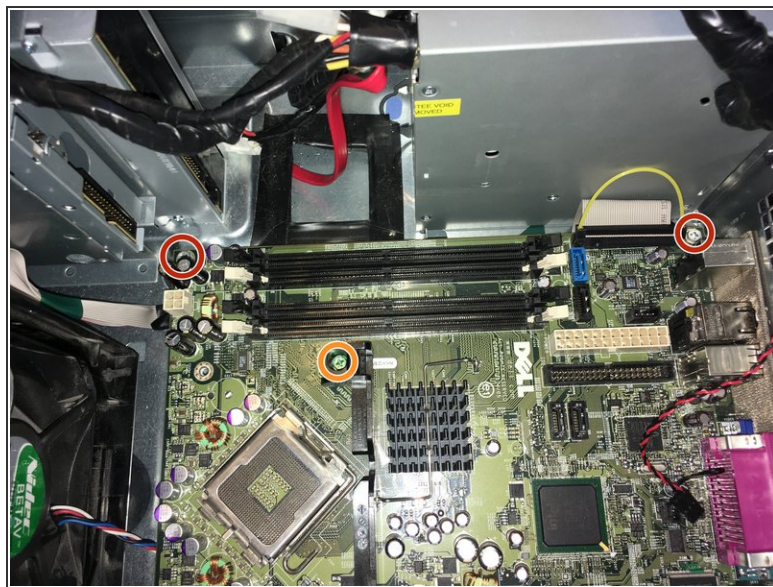
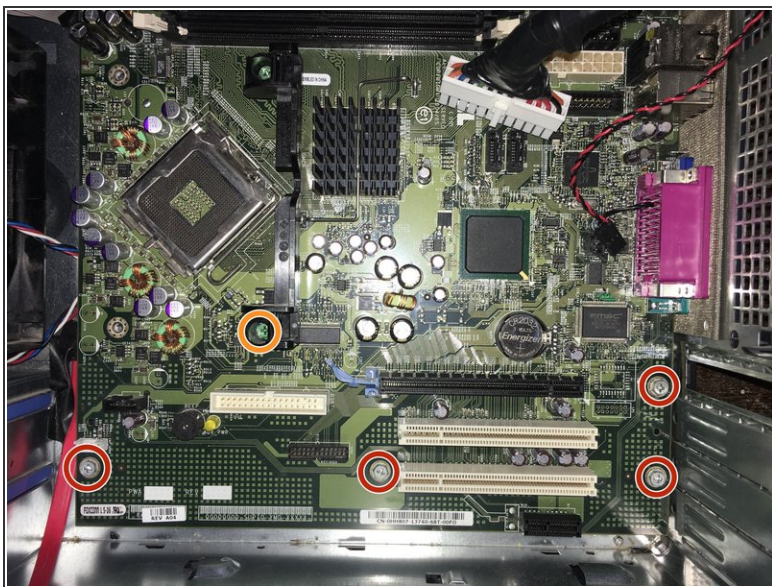
- Pull the three cables off.

Step 15 — Remove the graphics card



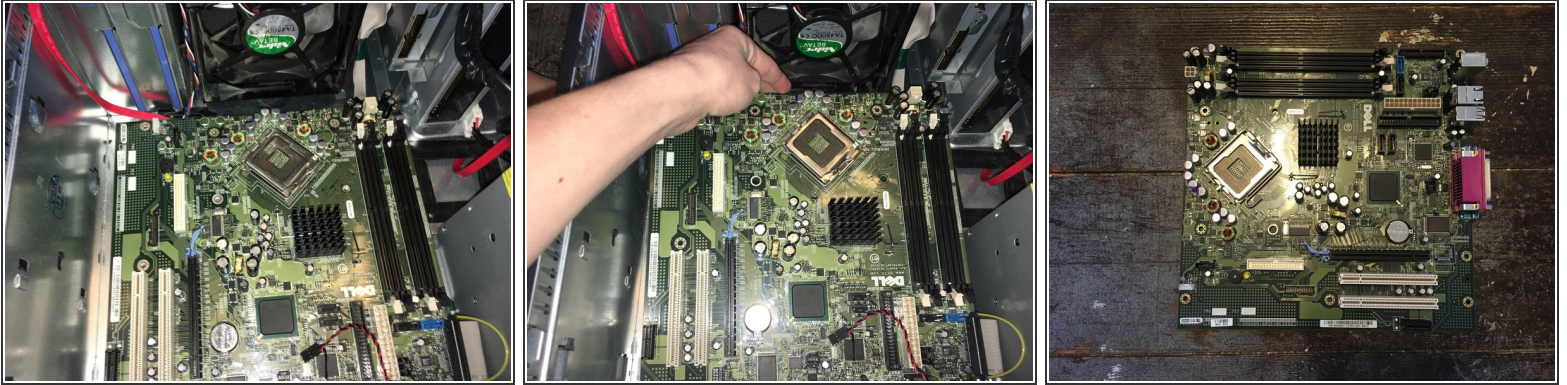
- Push the tab to releases the latch.
- Push the tab and pull the graphics card out.

Step 16 — Remove the motherboard screws



- Remove the six Philips #2 screws.
- Remove the two green Philips #2 screws.

Step 17 — Remove the motherboard



- Gently pull the motherboard out.

To reassemble your device, follow these instructions in reverse order.