



# iON SnapCam 1046 Lite Capture Button Replacement

This guide will show how to get to the capture button. The button is soldered to the motherboard. To replace it, advanced soldering is required.

Written By: Ahmad Syamil Ali



## INTRODUCTION

This guide walks through how to replace the capture button on the iON SnapCam 1046 Lite. Replacement is challenging and time consuming. It will require advanced soldering and circuitry.



### TOOLS:

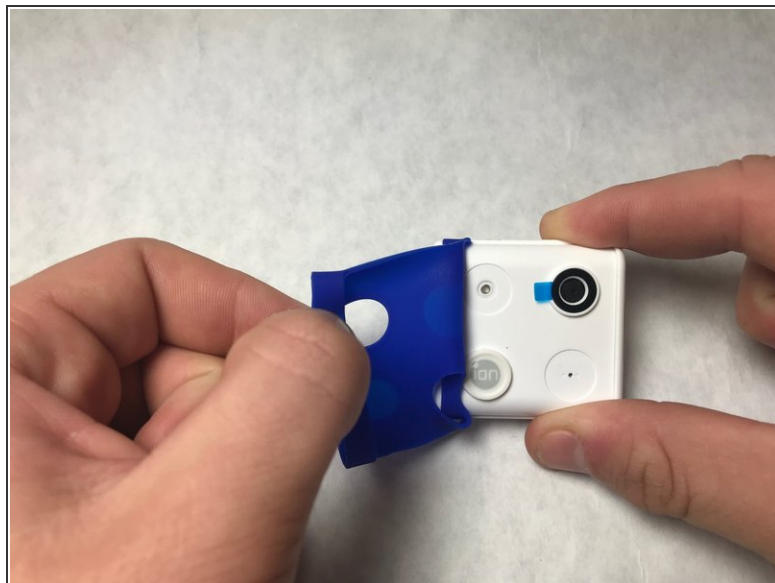
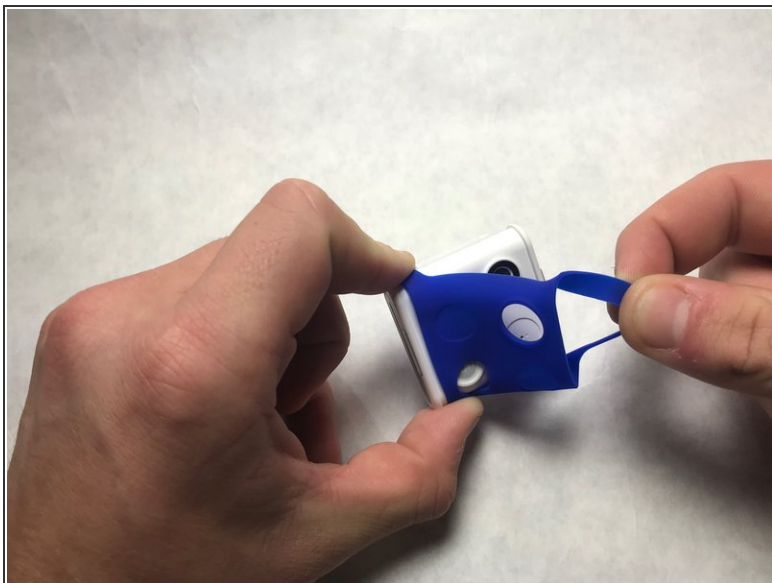
- [iFixit Opening Tools](#) (1)
- [Metal Spudger](#) (1)
- [Phillips #00 Screwdriver](#) (1)



### PARTS:

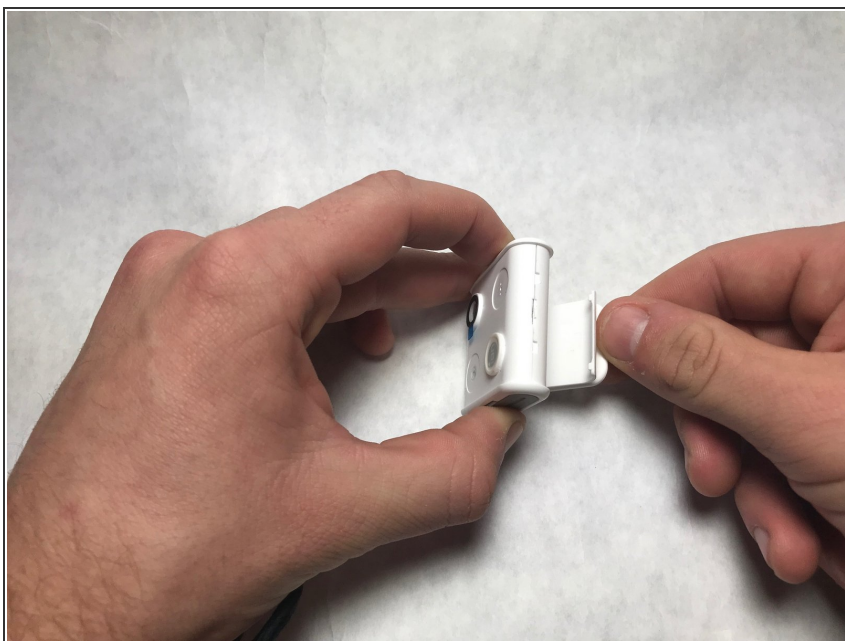
- [Screws](#) (4)  
PH00  
*4mm in length*

## Step 1 — Camera Lens and Cover



- Remove any external skins placed on the device. To do so, simply lift up and peel to remove.

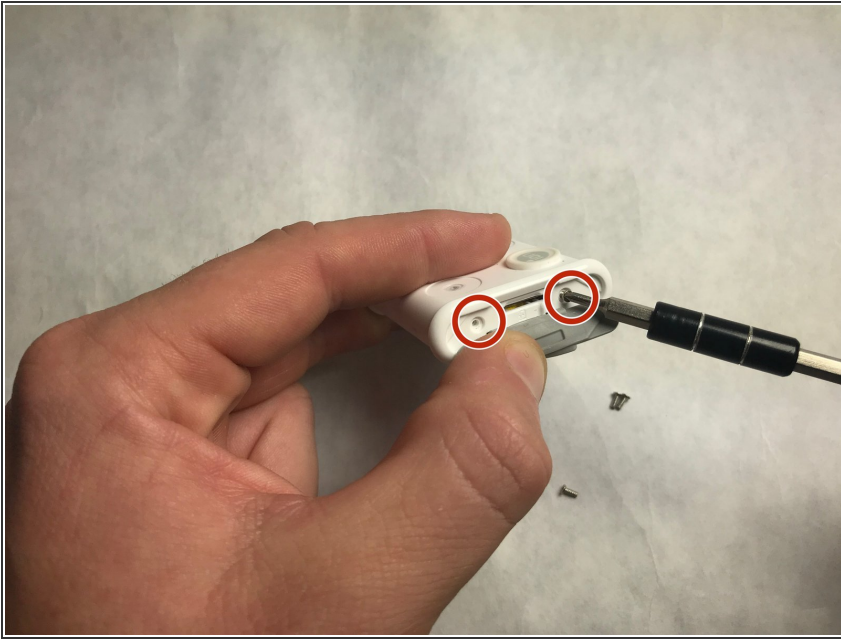
## Step 2



- Firmly pull on the back clip in order to remove.

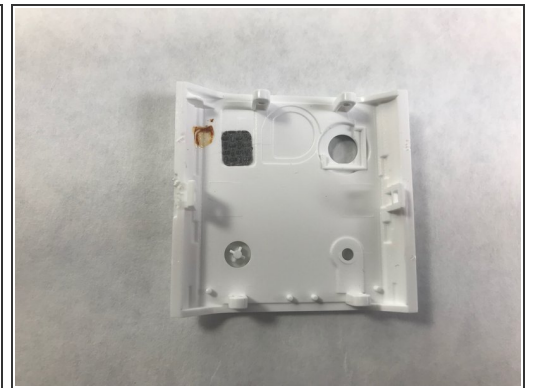
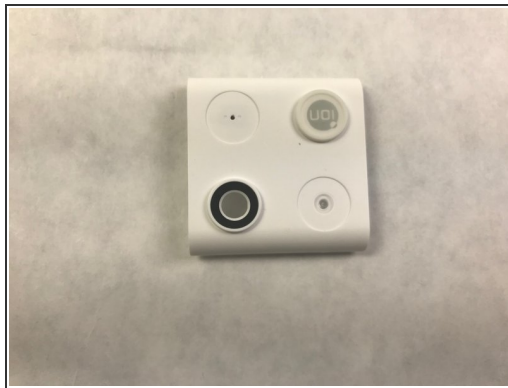
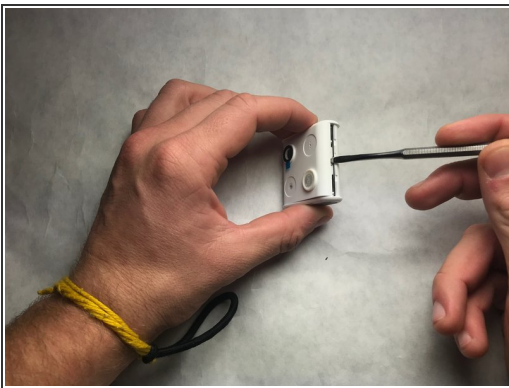


### Step 3



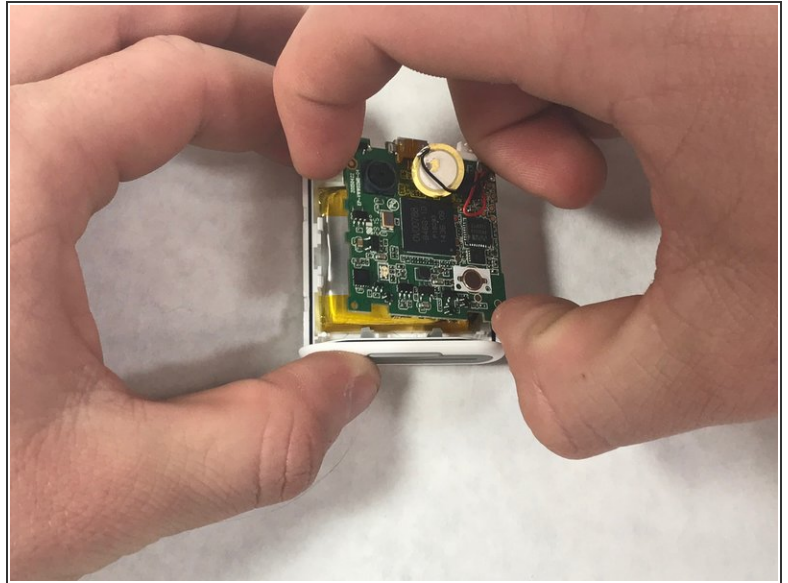
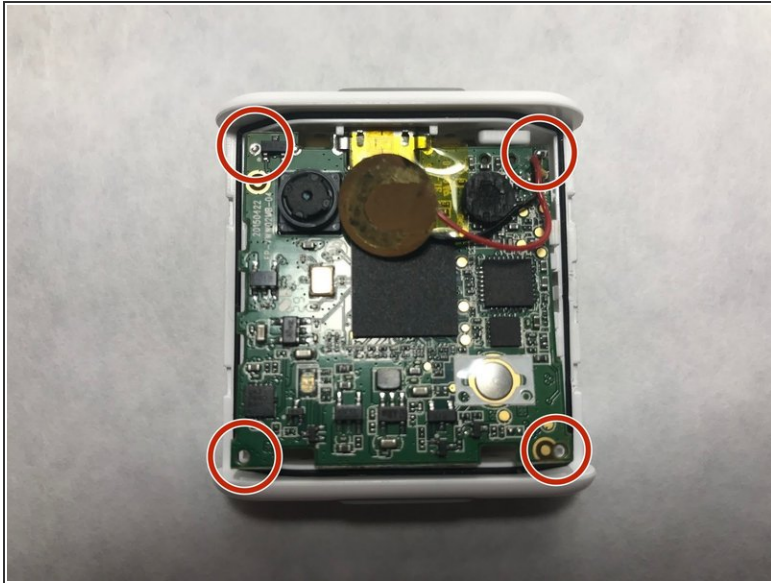
- Use a Phillips head screwdriver to remove the four 4mm PH00 screws located on the sides of the device. All screws are located under each of the grey covers for the microSD card and the microUSB insert.

### Step 4



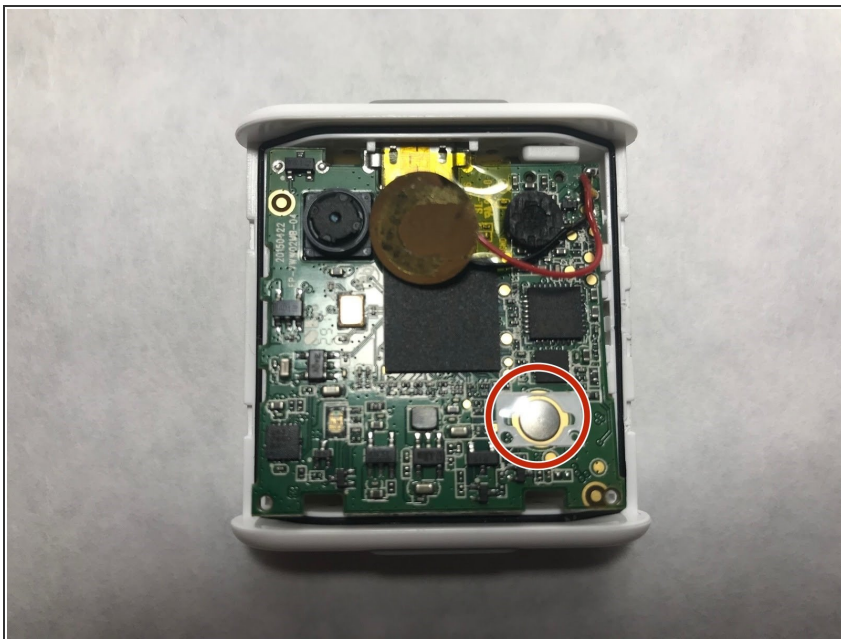
- Grab a metal or plastic opening tool and insert it into the middle slot on the bottom of the camera and lightly pry open.
- Locate the camera lens in the bottom left-hand corner of the picture which can be replaced by replacing the entire cover. The back of the cover is also shown. The camera is now located in the top right-hand corner of the picture.

## Step 5 — Capture Button



- Remove the motherboard by pulling it from the edges as circled.

## Step 6



- Replace capture button with advanced soldering and circuitry (circled in red).

Once the capture button has been replaced, reassemble the iON SnapCam Lite by following these steps in reverse order.

