



# Logitech Circle Battery Replacement

This guide will allow you to remove and replace...

Written By: Kylie



# INTRODUCTION

This guide will allow you to remove and replace the battery inside of the Logitech Circle. This guide is fairly simple to follow, with only a few screws being between you and the battery itself. However, be sure to be careful handling the Logitech, as the battery and lens bundle is connected to the base of the circle with a ribbon that breaks relatively easily.

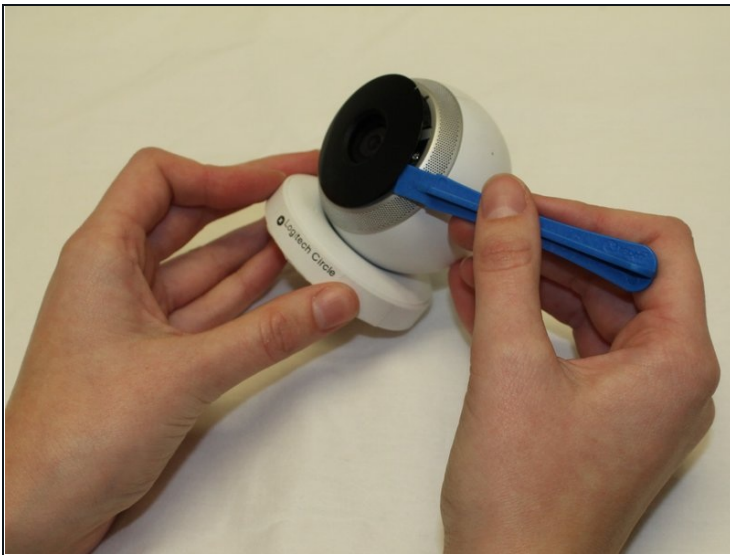
## TOOLS:

Phillips #0 Screwdriver (1)  
iFixit Opening Tool (1)

## PARTS:

3.7V 800mAh 603040 replacement battery (1)

## Step 1 — Battery



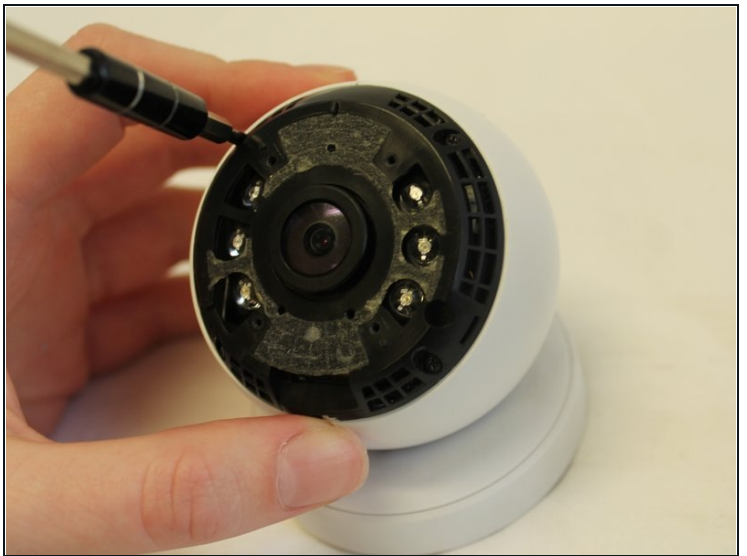
- Wedge the plastic opening tool under the black circle lens to gently pry it off.
- ① The lens is only attached with sticky tape and should remove relatively easily.

## Step 2



- Remove the four 3mm Phillips #0 screws that hold down the first ring.

## Step 3



- Remove the four 3mm Phillips #0 screws that hold down the second ring.



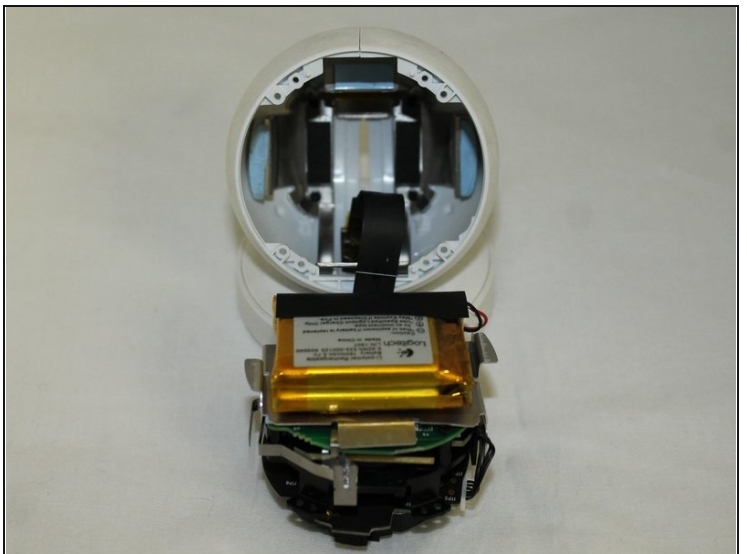
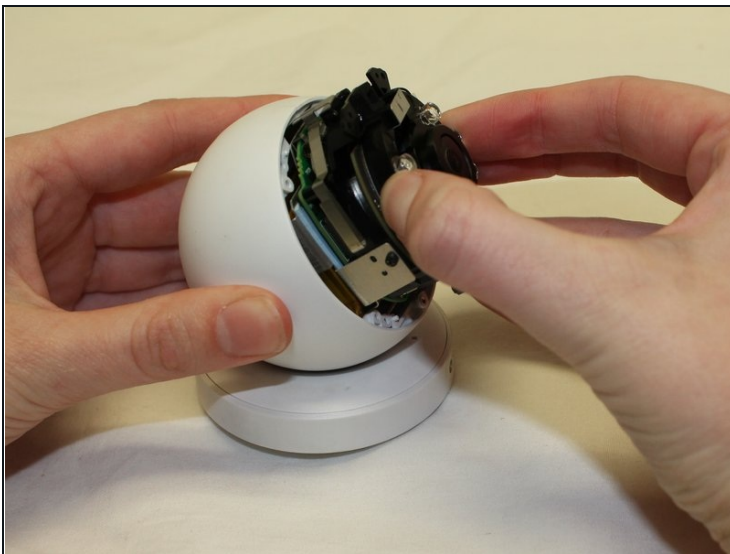
## Step 4



- Remove the four 3mm Phillips #0 screws that hold down the final ring. Do not remove the lens/battery bundle yet.

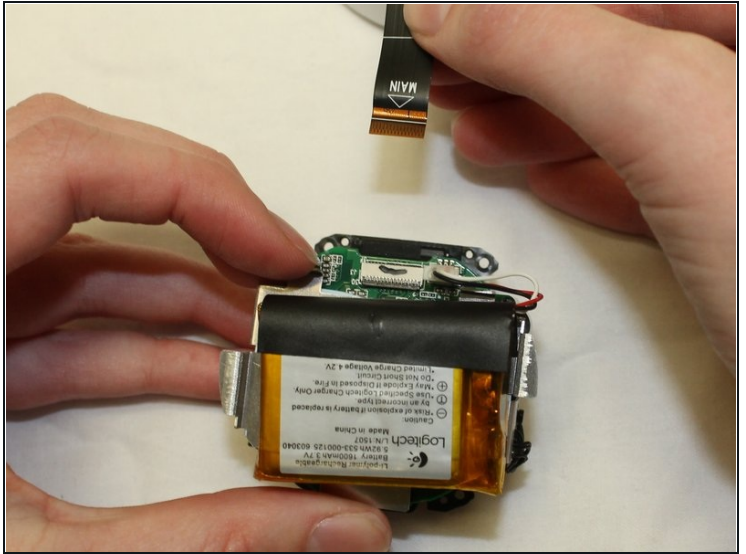
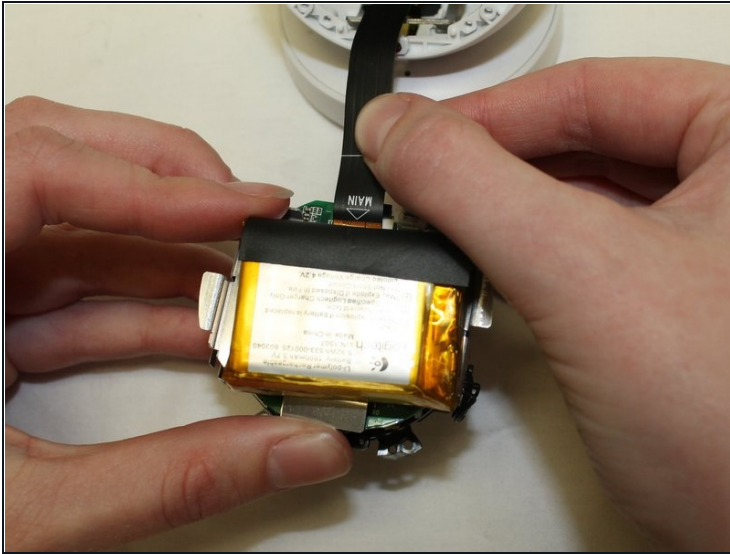
⚠ The lens/battery bundle is attached to the base by a ribbon cable that can break, so be very careful handling the circle.

## Step 5



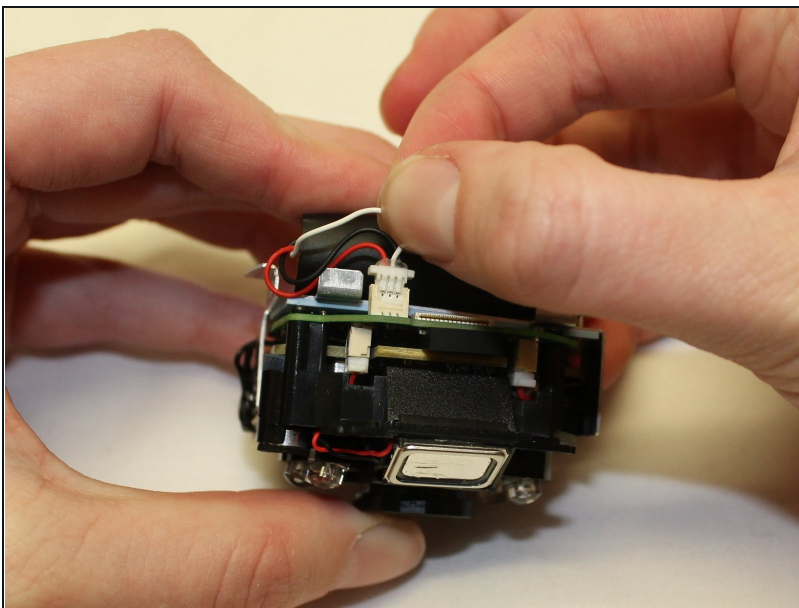
- Gently remove the lens/battery bundle from the base of the circle, being mindful of the ribbon cable.

## Step 6



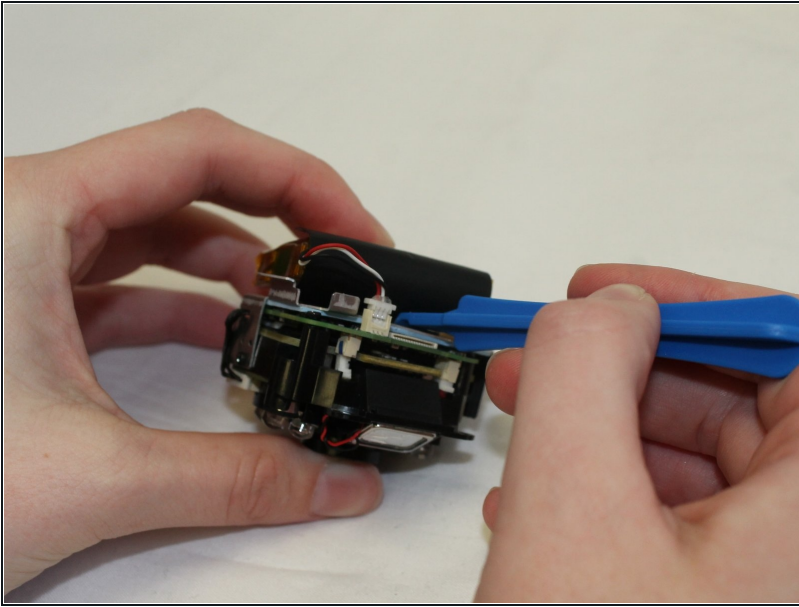
- Gently pull the ribbon cable loose from the lens/battery bundle.
- ① While this is not an entirely necessary step, it helps to ensure the ribbon cable will not break during the rest of the battery replacement.

## Step 7



- Carefully unplug the battery from the rest of the lens.

## Step 8



- Remove the battery using a plastic opening tool. The battery is attached with sticky tape and will remove with gentle prying motions.

---

To reassemble your device, follow these instructions in reverse order.