



# toshiba satellite pro T130-138 Teardown

I am going to show you how to teardown a Toshiba laptop

Written By: storm builder





## TOOLS:

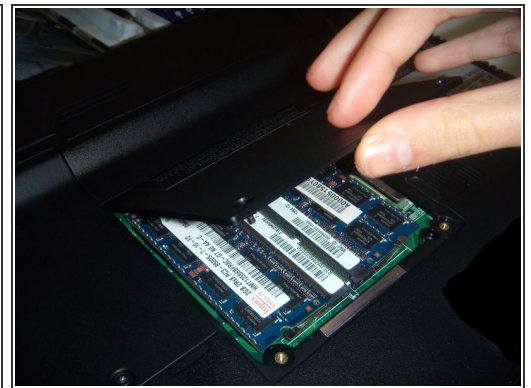
- [Spudger](#) (1)
- [54 Bit Driver Kit](#) (1)
- [iFixit Opening Tools](#) (1)

## Step 1 — turning off



- turn off your computer for safety reasons

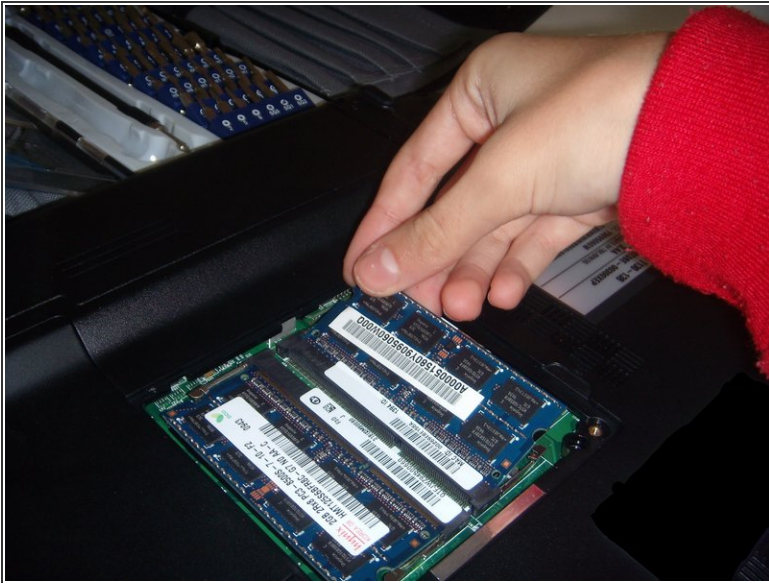
## Step 2 — unscrewing case and getting RAM boards out



- flip the computer over and remove the 12 philips 0 screws this will make the keyboard and trackpad part free
- then unscrew the two philips 0 screws guarding the 2 RAM boards

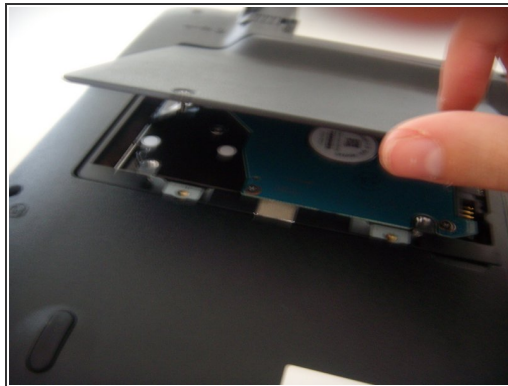
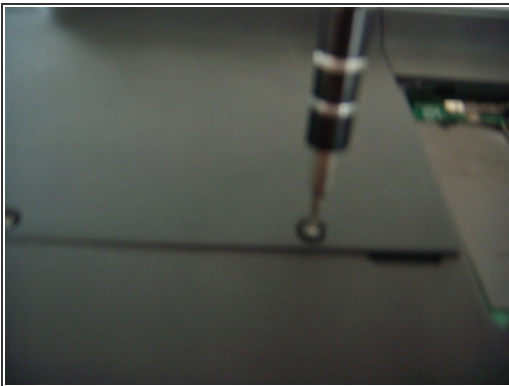


### Step 3 — getting RAM boards out



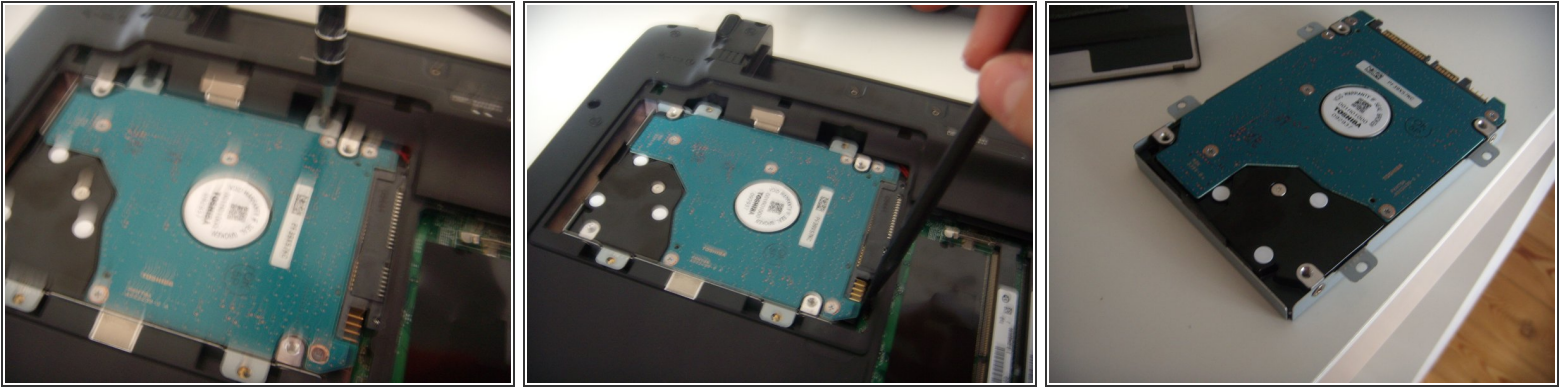
- you can remove the 2 RAM boards by lifting them up
- here we have two beautiful RAM boards

### Step 4 — getting hard disk case out



- by unscrewing these 2 star screws size 6 we can lift the hard disk plate.
- ❗ the hard disk is secured by two philips 0 screws

## Step 5 — getting hard disk out



- unscrew the hard disk screws
- and use the spudger to slide the hard disk out
- pull it up and put it aside

## Step 6 — getting battery out



- slide the two plastic pieces holding the battery
  - and pull it out
  - you will have to take all these silver philips 0 screws
- i** but for the next step remove the ones I am pointing

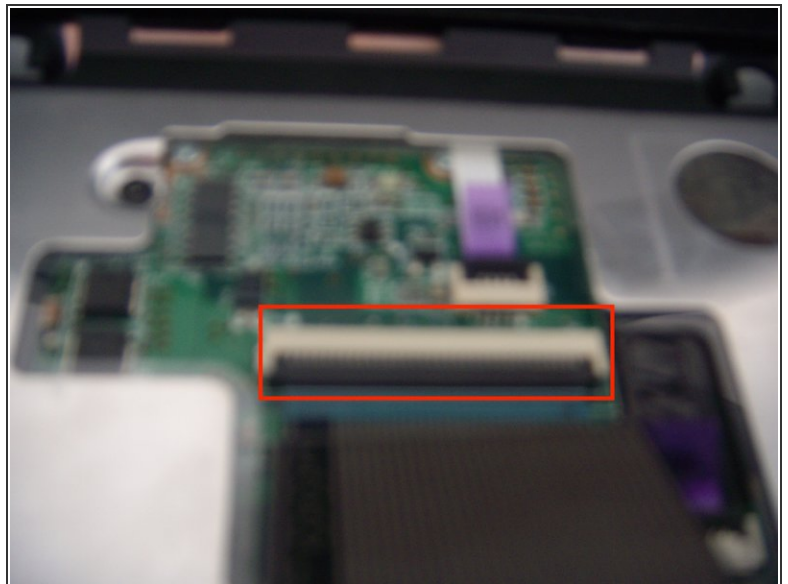


## Step 7 — getting the keyboard bezel out



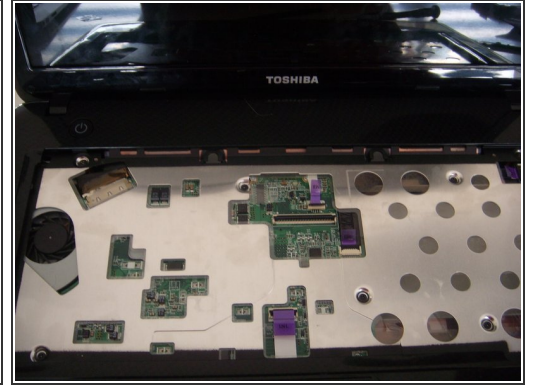
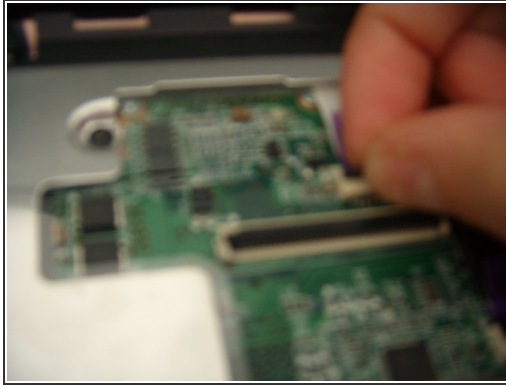
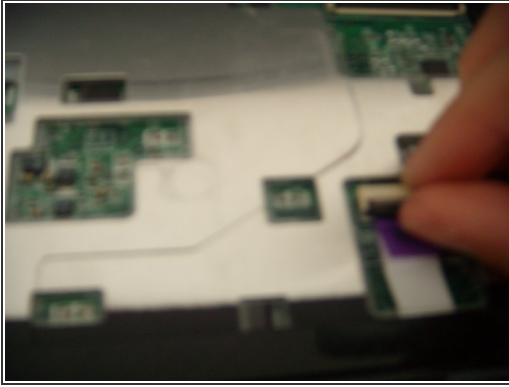
- use a spudger to remove the bezel

## Step 8 — disconnecting keyboard



- remove the 2 philips 0 screws and get the keyboard out with a spudger
- lift the black plastic and pull the cable out

## Step 9 — disconnecting trackpad, on off button and lights



- follow the same process to disconnect the trackpad, button and lights.
- you will end up with something like this

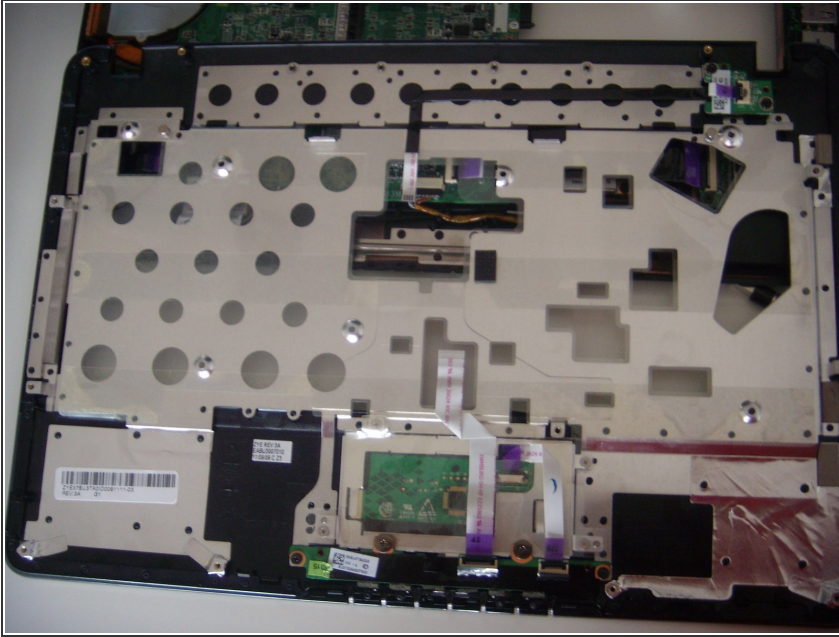
## Step 10 — taking top off



- you have to take this screw located on the RAM boards connector
- use a spudger to lift the top off, go all around the laptop and you'll get it off
- It looks really beautiful!



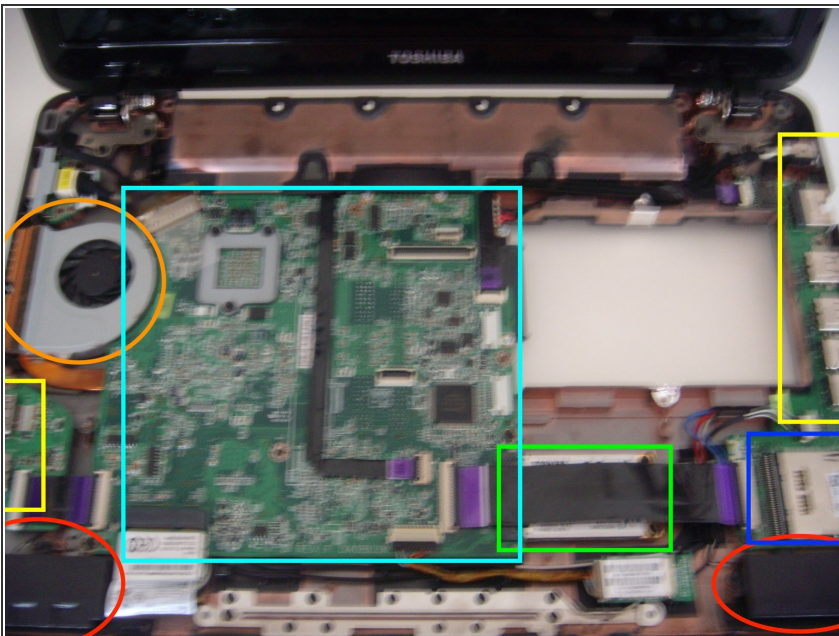
## Step 11 — the trackpad button and lights



- this is not a step I am not going deeper into this so I don't break anything you can go if you want.

⚠ anything that you do that is not shown in the teardown is at your own risk

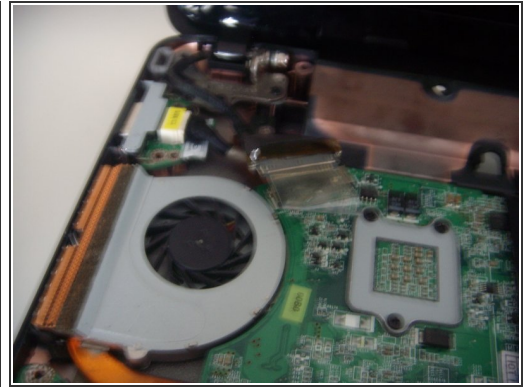
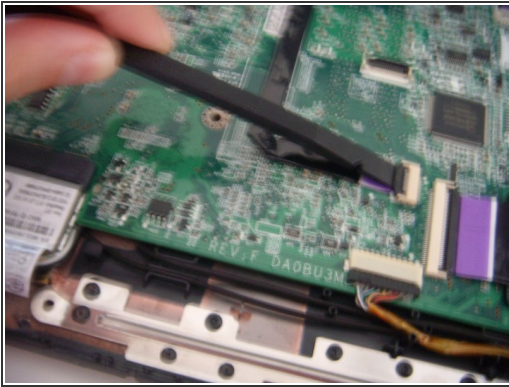
## Step 12 — inside



- the inside contains
- two speakers
- one cooler
- ports
- screen connector
- and a giant interesting motherboard
- oh and don't forget about the memory card reader

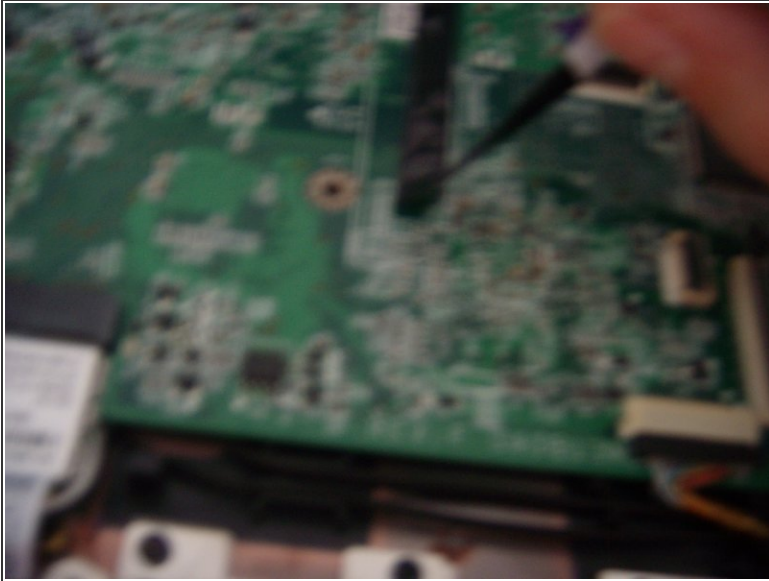


## Step 13 — disconnecting the rest



- here we disconnect the battery slot
- and we get the card reader connector out
- such as the screen

## Step 14 — disconnecting the rest



- remove the rest of the cables
- ⚠ some of the cables are glued to the mother board don't remove them
- remove the mother board screws
- the screen connector is secured by 2 philips 0 screws



## Step 15 — the end



- if you did what I did you will end up like this
  - I don't want to go deeper because I don't want to take the risk of breaking or damaging the computer
- ⚠ if you go deeper it's at your own risk

## Step 16 — final thoughts



- I will give it an 8/10
- after removing the screws everything is easy to remove
- the top, bezels and keyboard come easy off
- some of the cables and components are fragile with makes it harder to remove
- the track pad is covered with a sticky plastic with makes it harder to tear down
- any components that are not well connected can make the computer not function well.
- the opening tools are there if you want to disconnect some cables that are hard to disconnect