



Mattel Loopz Speaker Replacement

This guide will show you how to replace a faulty speaker in the Mattel Loopz game.

Written By: Trevor Lasiter



INTRODUCTION

This guide will show you how to properly replace the speaker for the the Mattel Loopz interactive game.



TOOLS:

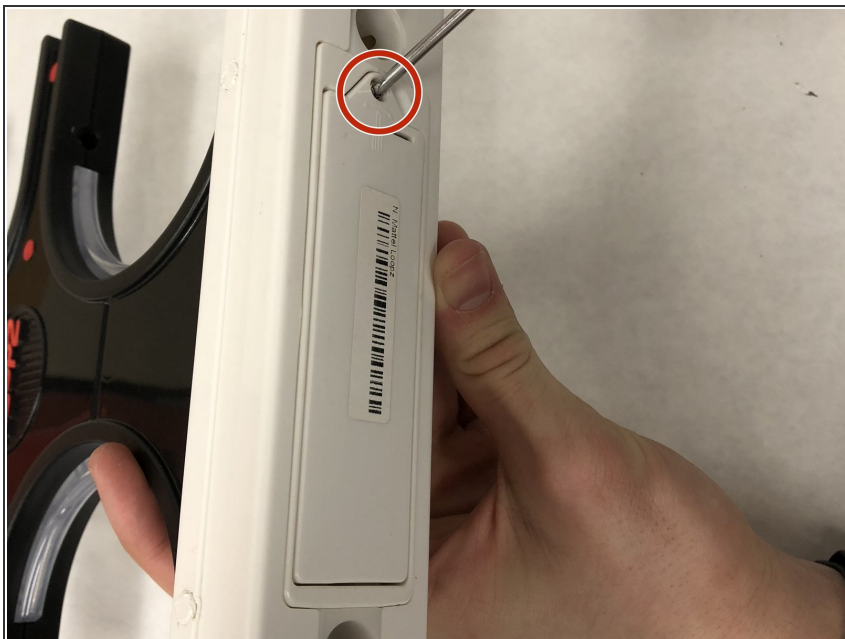
- [Phillips #2 Screwdriver](#) (1)
- [Phillips #1 Screwdriver](#) (1)
- [Soldering Iron](#) (1)
- [Spudger](#) (1)



PARTS:

- [AA Batteries](#) (4)
- [Speaker](#) (1)

Step 1 — Batteries



- Use a No. 2 Phillips head screwdriver to take out the 1/4" screw that holds the battery cover in place on the bottom of the device.

Step 2



- Take out the 4 AA Batteries.

Step 3 — Speaker



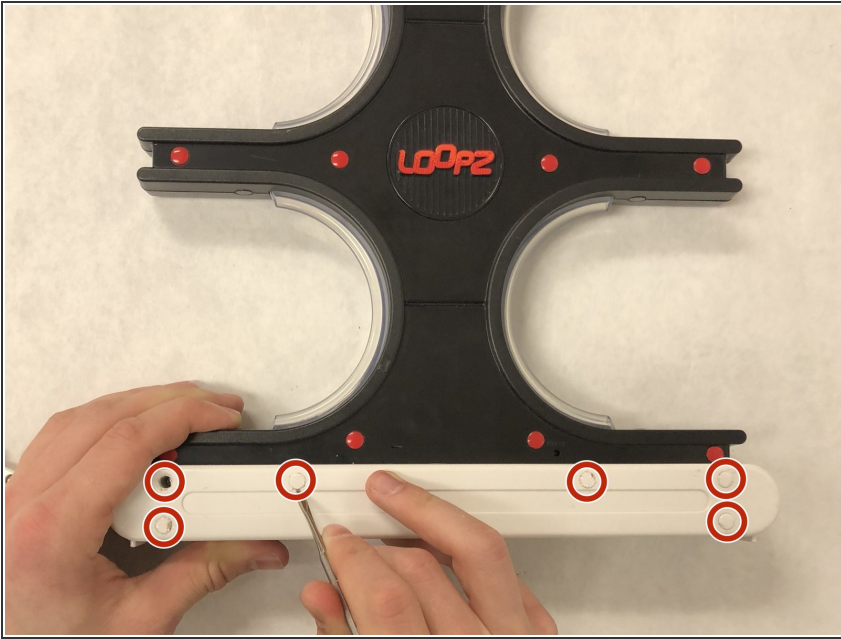
- Remove red screw covers (13 total) using spudger.

Step 4



- Remove the thirteen 12.7mm screws with a #1 Phillips screwdriver.

Step 5



- Remove 6 white caps using spudger to reveal screws underneath.

Step 6



- Remove the six 16mm screws with a #1 Phillips screwdriver.

Step 7



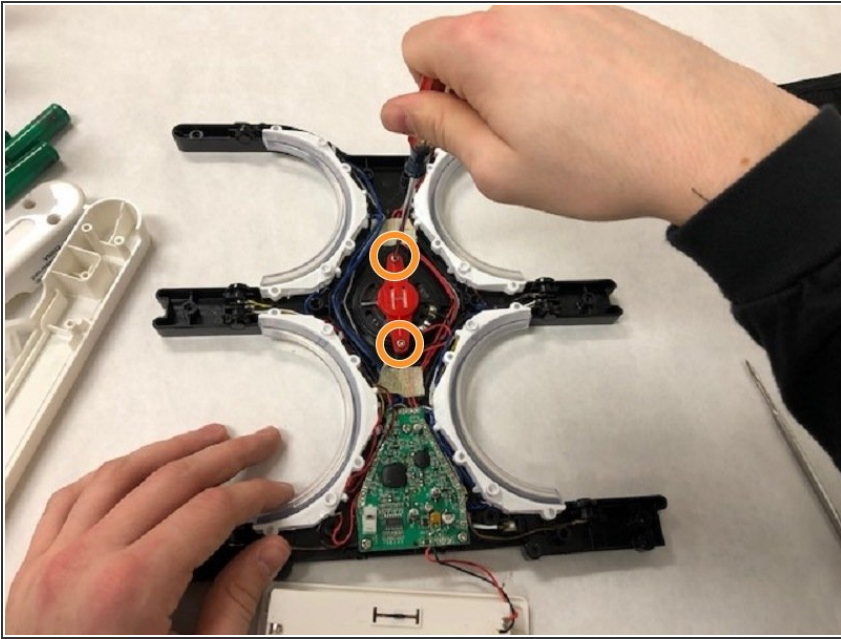
- Remove the white cover. Be sure to remove the front and the back.

Step 8



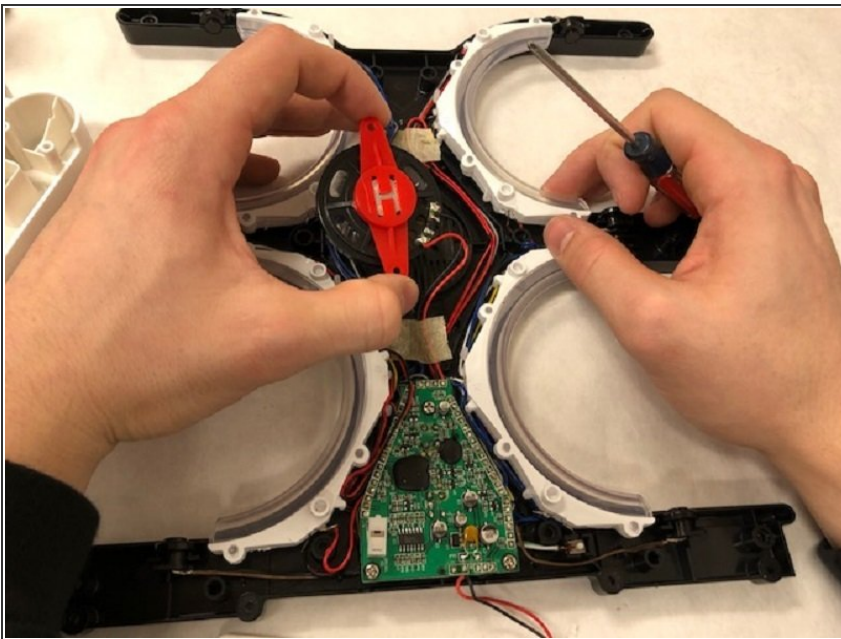
- Remove the black, plastic cover to reveal the internal electronics as shown.

Step 9



- Remove the two 6.4mm screws with a #1 Phillips screwdriver.

Step 10



- Remove the speaker as shown.

Step 11



- Use a soldering iron to [desolder](#) the red and black speaker wires from the speaker.

To reassemble your device, follow these instructions in reverse order.