



# Sony Smart Watch SW2 Battery Replacement

Remove and replace the battery inside the smart watch.

Written By: Vincent Shiue



---

## INTRODUCTION

This guide will teach you how to safely replace the battery for the Sony Smart Watch SW2.

---



### TOOLS:

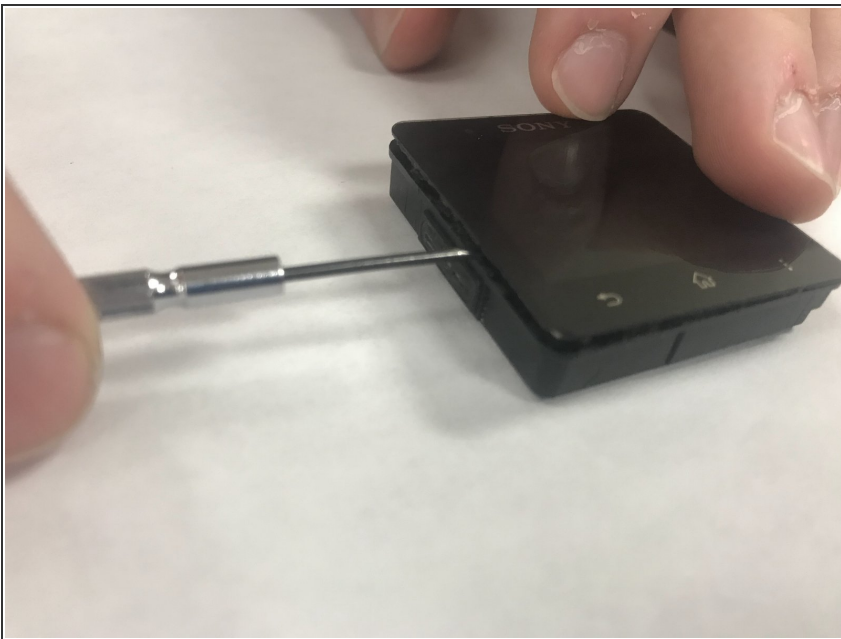
- [Soldering Workstation](#) (1)
  - [Flathead Screwdriver](#) (1)
-

## Step 1 — Display Assembly



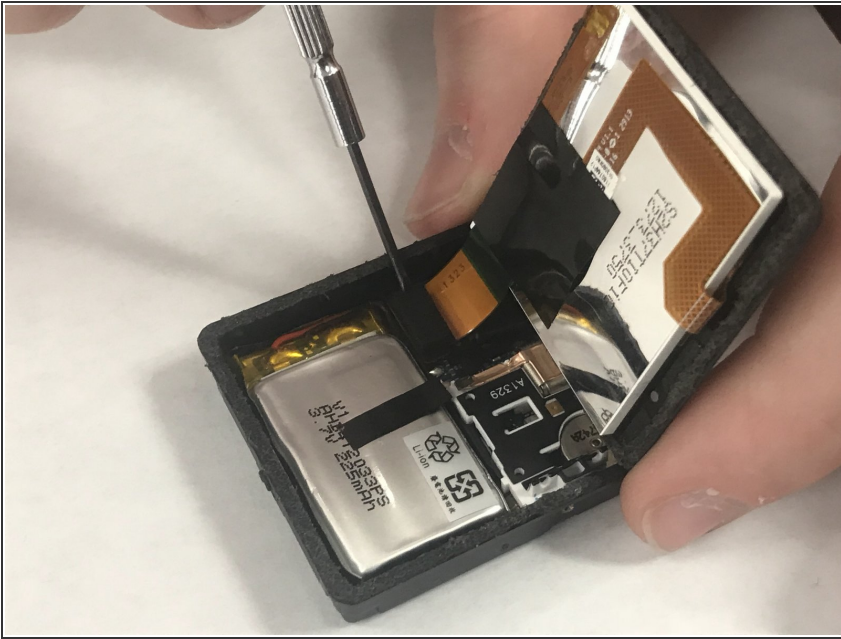
- Detach the smart watch from the band by pushing on the back of the watch housing.
  - ☑ The power button may fall out once the smart watch is detached.
- ⓘ Set aside the power button and watch band as they are no longer needed for further disassembly.

## Step 2



- Use a plastic opening tool to carefully pry the LCD screen from the watch housing.

### Step 3



- Use a plastic opening tool or spudger to lift the screen assembly press-fit connector free.

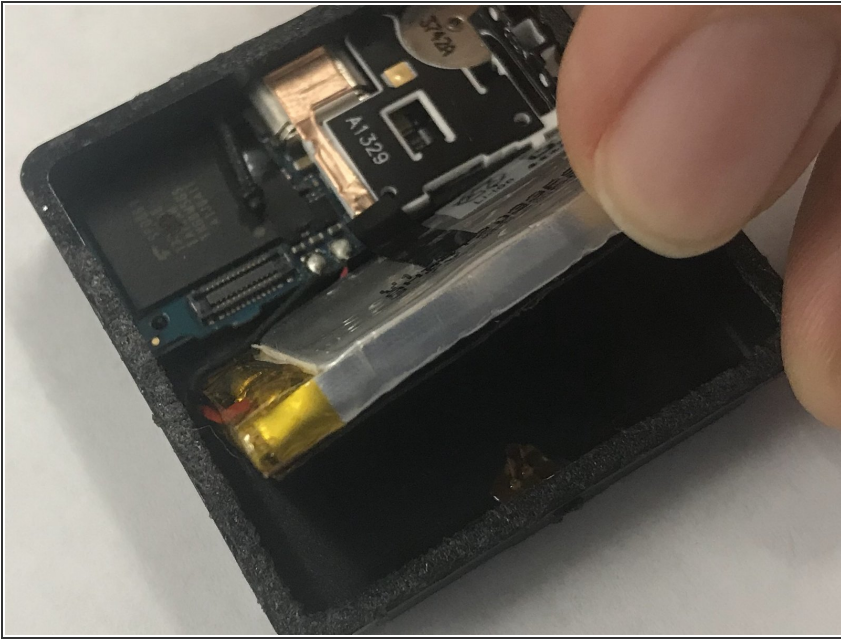
### Step 4



- Set aside the detached LCD screen to access the battery.

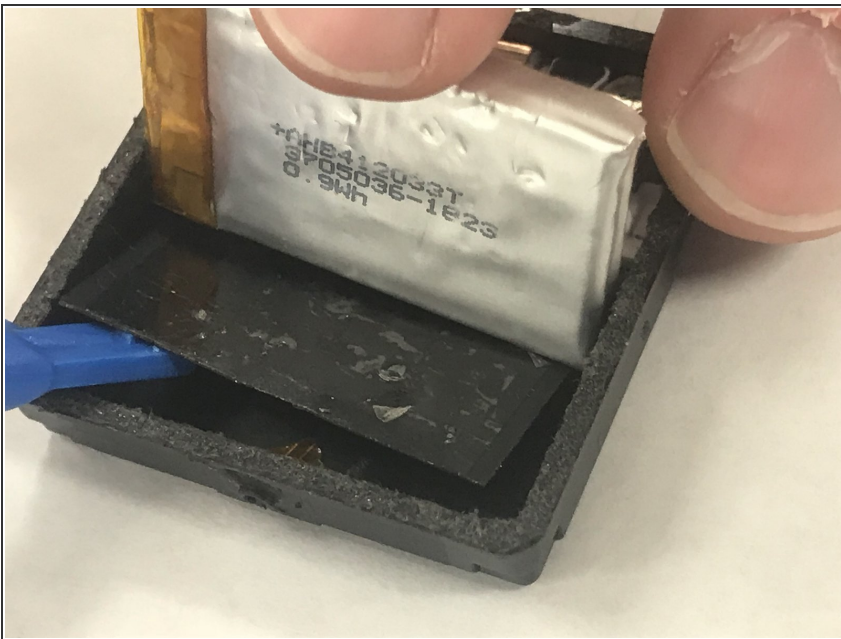


## Step 5 — Battery



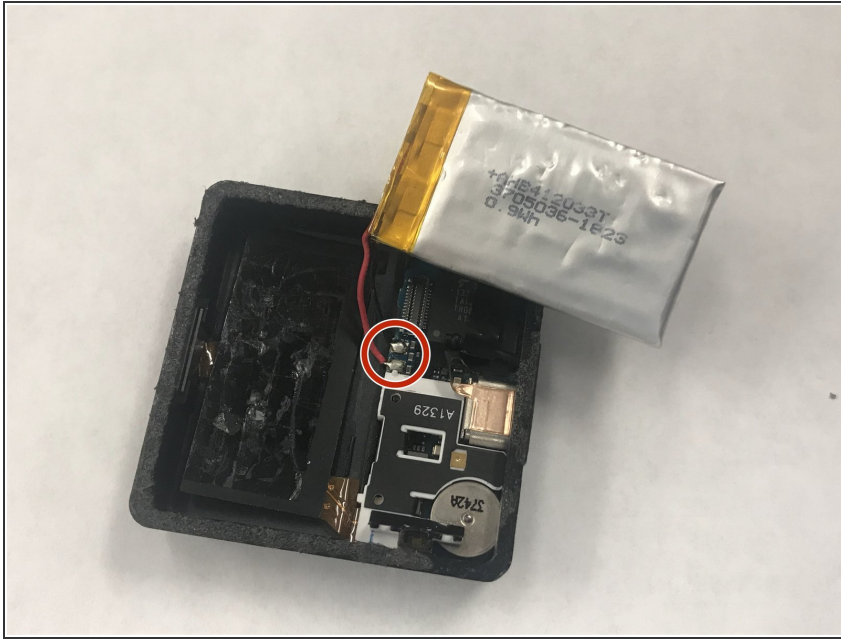
- Lift one side of the battery up carefully. There is a thin black circuit adhered to the back of the battery that connects to the motherboard and the charger.
- ⓘ The connection is already broken in this image and you will not be able to lift the battery this high.

## Step 6



- Push the black piece down while very carefully pulling the battery off. Work your way around without lifting the black piece up too much.

## Step 7



- Once the battery is free from the frame adhesive, [desolder](#) the black and red battery wires.
- Remove the battery.

To reassemble your device, follow these instructions in reverse order after the battery is replaced.