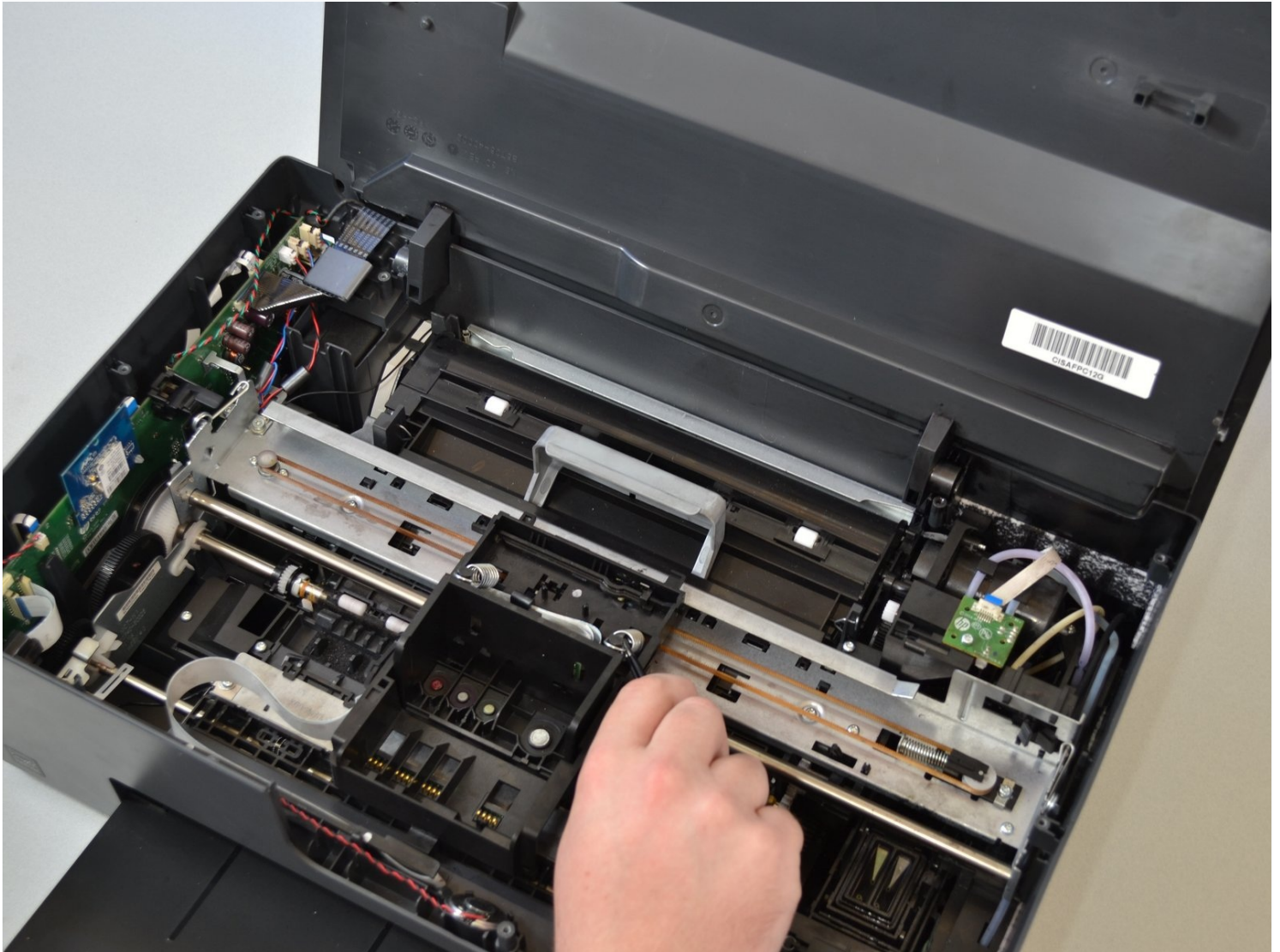




HP Officejet Pro 6835 Printhead Replacement

To replace the printhead, you need a thin pair...

Written By: Dimitri Charitou



INTRODUCTION

To replace the printhead, you need a thin pair of tweezers to get into some small crevasses and a screwdriver to remove screws. Make sure to extract all the ink cartridges from the carriage before starting the disassembly. Check out the troubleshooting page before replacing the printhead to make sure a replacement is absolutely necessary. Be prepared to get ink on your hands, as some components may have ink on them.

TOOLS:

[iFixit Opening Tool](#) (1)

[TR9 Torx Security Screwdriver](#) (1)

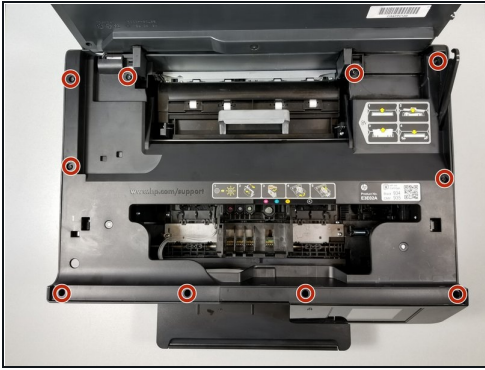
[Tweezers](#) (1)

Step 1 — HP Officejet Pro 6835 Cover Disassembly



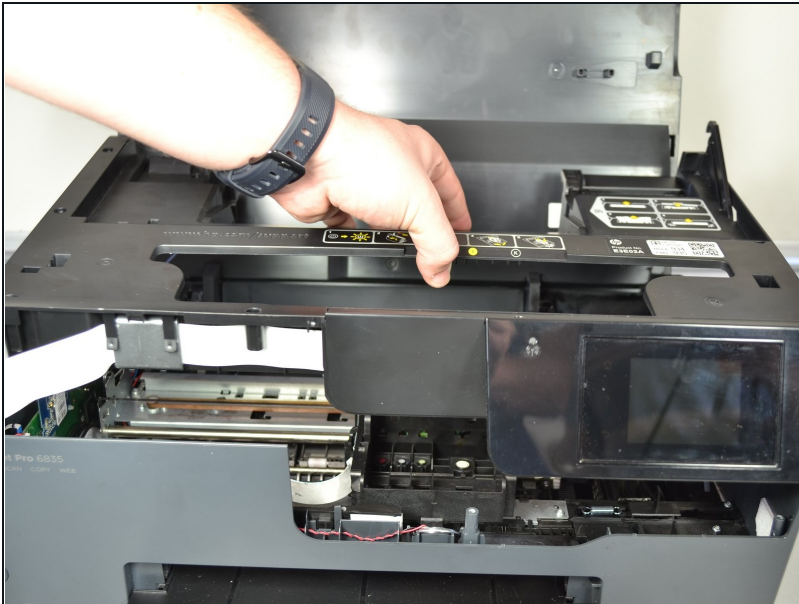
- Open the main lid as far as it will go.
- Use a plastic opening tool to gently pry off the hinge on the right side by pushing it to the left and off the hook.
- Open the lid further.

Step 2



- Use a T9 torx screwdriver to remove a total of ten (10) 12mm screws from the main cover by turning the screwdriver counterclockwise.
- ① The two screws above the screen assembly are deep so you may need a long screwdriver.

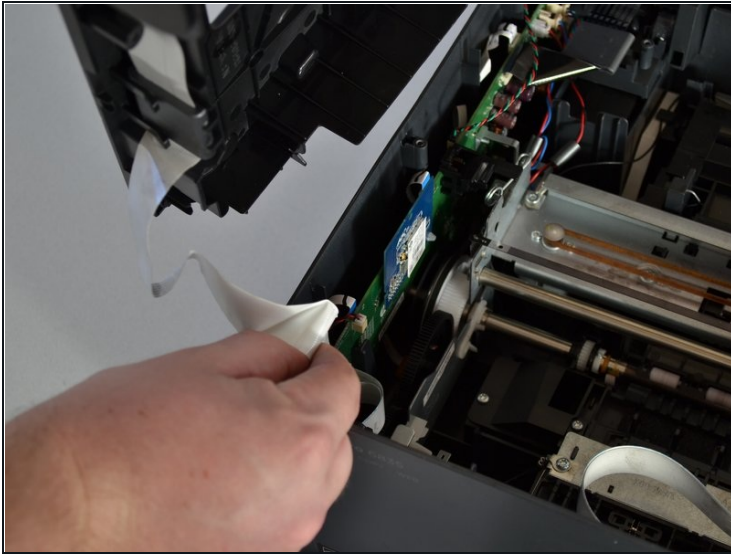
Step 3



- Grab the main cover and lift it up slightly.

⚠ Do not pull too hard—there is a cable connecting the cover to the printer.

Step 4



- Grab the base of the white ribbon cable connecting the cover to the base of the printer and pull it out.

Step 5 — Printhead



- Using [tweezers](#), pinch the top of the spring located on the right side of the printhead.
- Pull the spring up and around the hook of the carriage to remove the spring from the printhead.
- Use the same procedure to remove the left spring.

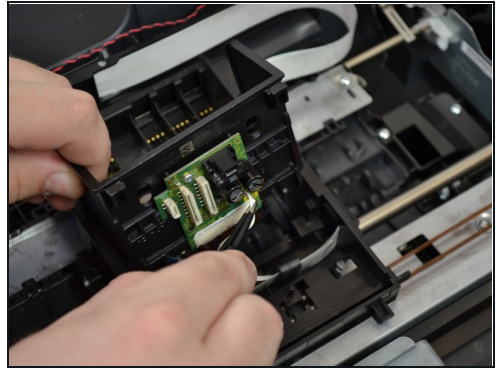
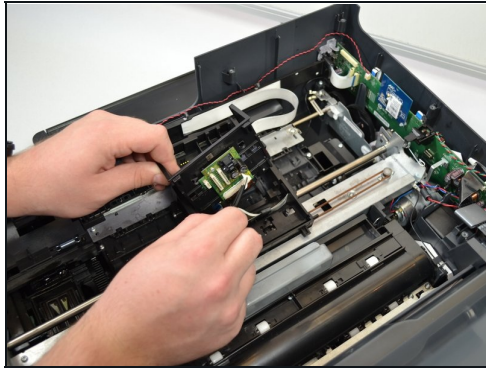
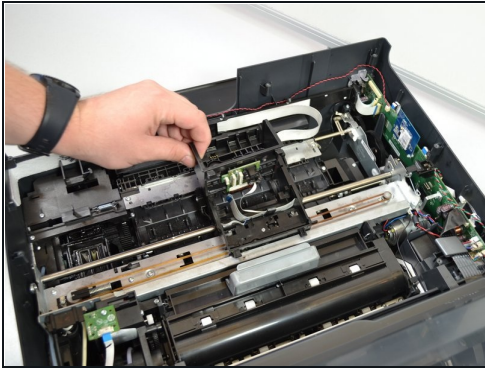
⚠ The springs may fly out of the printer once you remove them.

Step 6



- Pinch the left most white cable located on the back of the printhead with your tweezers.
- Pull the cable to remove it from the printhead.
- Continue this process to remove all three white cable from the printhead.

Step 7



- Lift the printhead off the printer to expose the last white cable.
- Pinch the the last cable with the tweezers.
- Pull the cable to disconnect it from the printhead.

To reassemble your device, follow these instructions in reverse order.