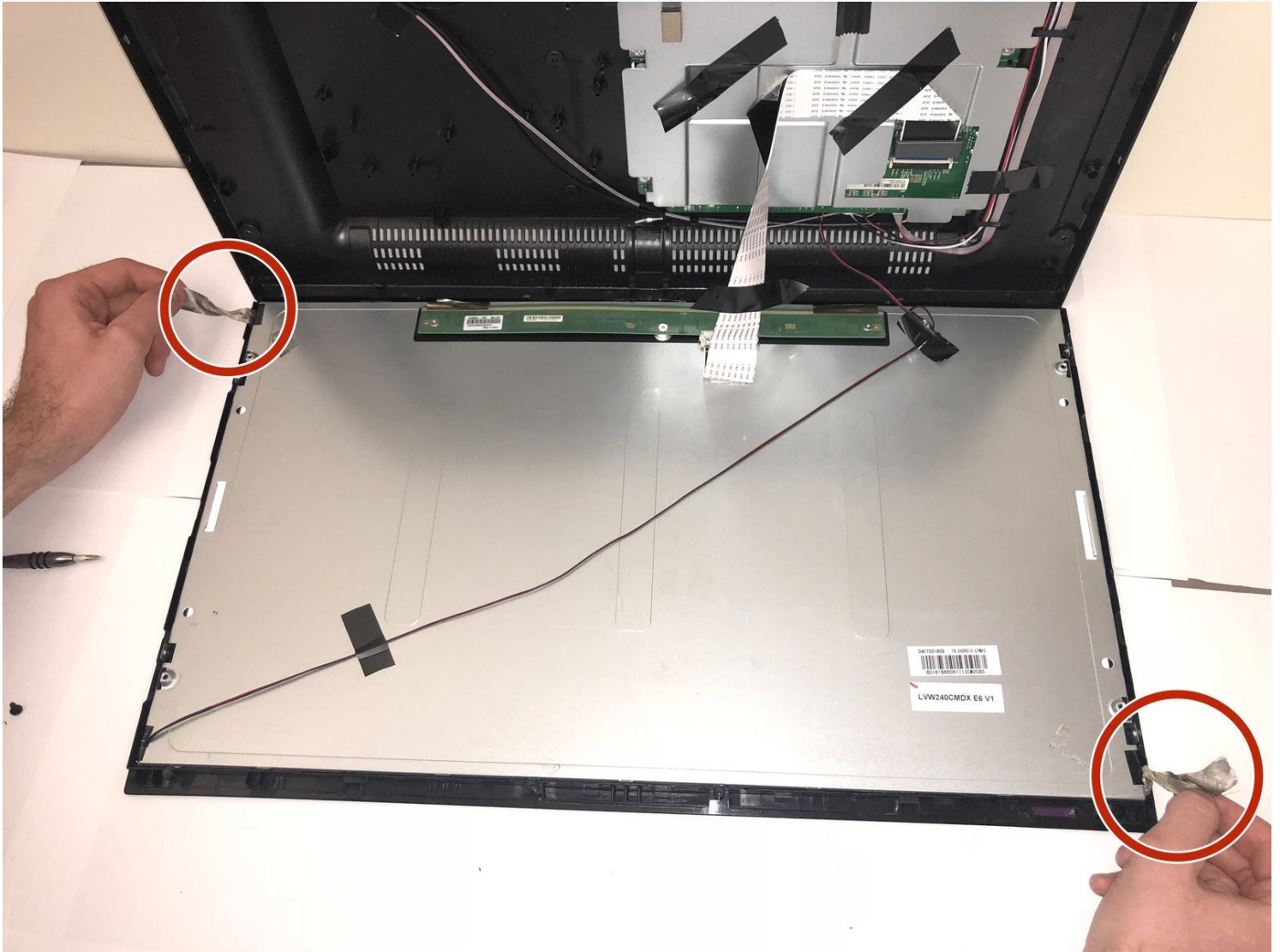




Insignia 24" LED Roku TV Screen Replacement

This guide will take you through the process of...

Written By: Hannah Berenjfoorosh



INTRODUCTION

This guide will take you through the process of replacing a broken or unusable screen on the Insignia 24" LED Roku TV.

TOOLS:

Phillips #00 Screwdriver (1)

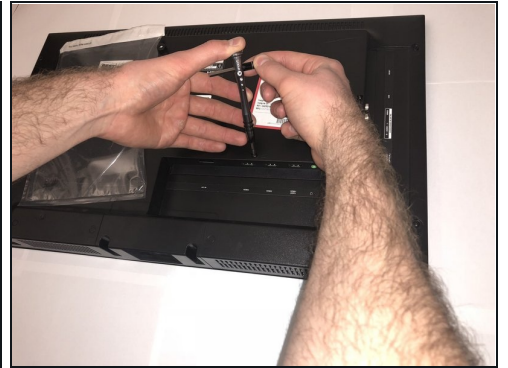
Phillips #2 Screwdriver (1)

Step 1 — Remove the base



- Rest the TV on its top edge so you have access to the base.
- Use a Phillips #2 screwdriver to take out the four screws on the bottom of the base.
- Remove the base from the frame.

Step 2



- Lay the TV face down.
- Use the Phillips #00 screwdriver to remove all of the Phillips Head Screws from the the back of the TV.

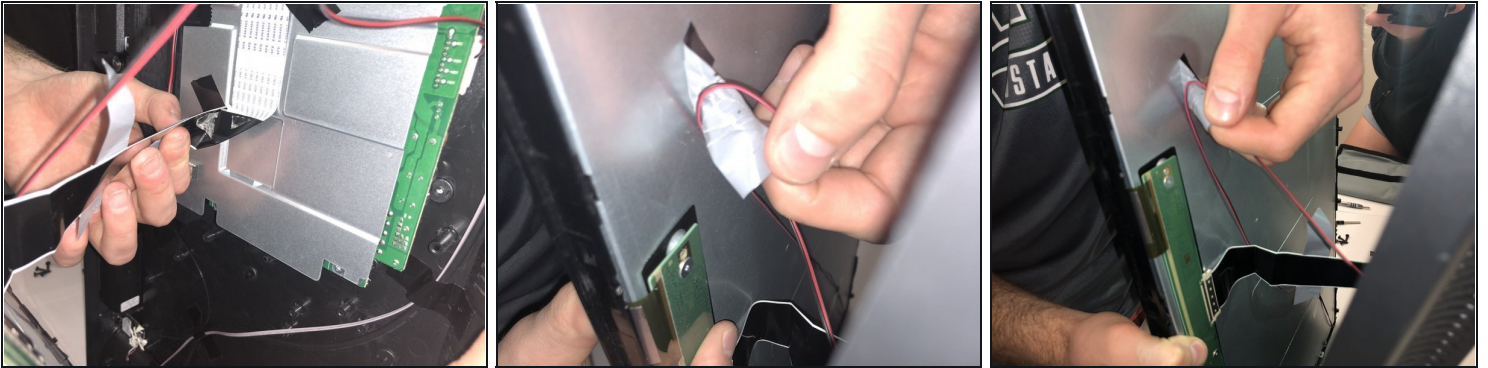
Step 3 — Pry the TV open



- Stand the TV on its top edge.
- Gently pry apart the front and back of the TV.
- ⓘ The two halves should pull apart easily since there are no longer any screws holding it together.

⚠ The two halves will still be connected by wires and cables that are taped to each side. Do not pull on these. We will remove them in the next step.

Step 4 — Disconnect wires



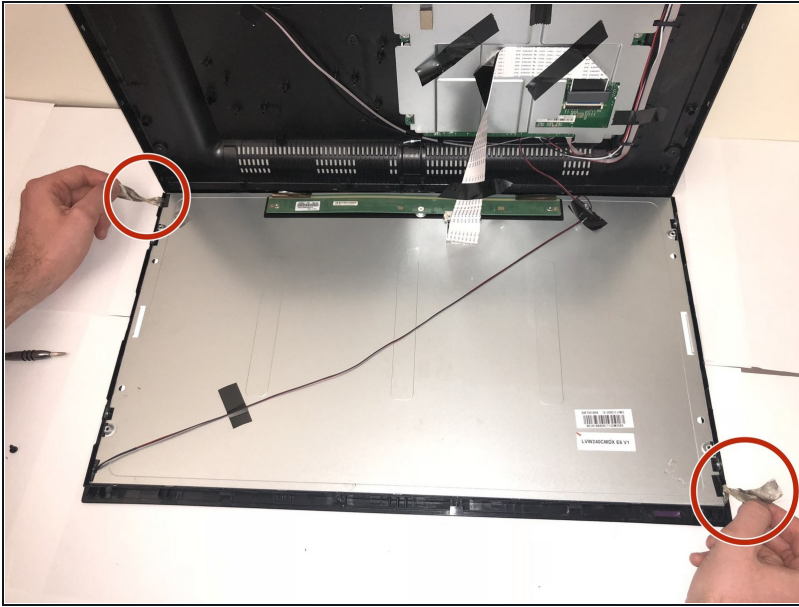
- ① As mentioned in the previous step, there are wires still connecting the two halves.
- Remove all the pieces of tape to detach the wires from both sides.
 - You want to gently peel the tape off, without pulling on the wires.

Step 5



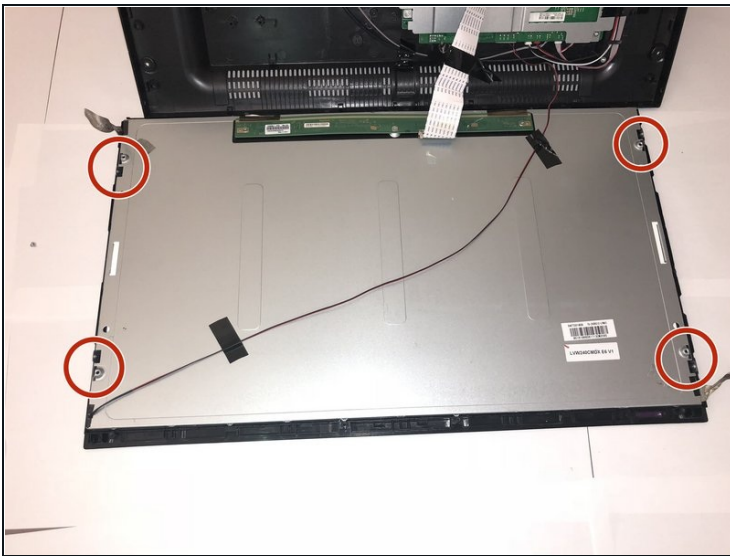
- Spread apart your TV the rest of the way, but do not disconnect any of the wires.
- ① You should have a clear view of the inside on both sides.

Step 6 — Screen



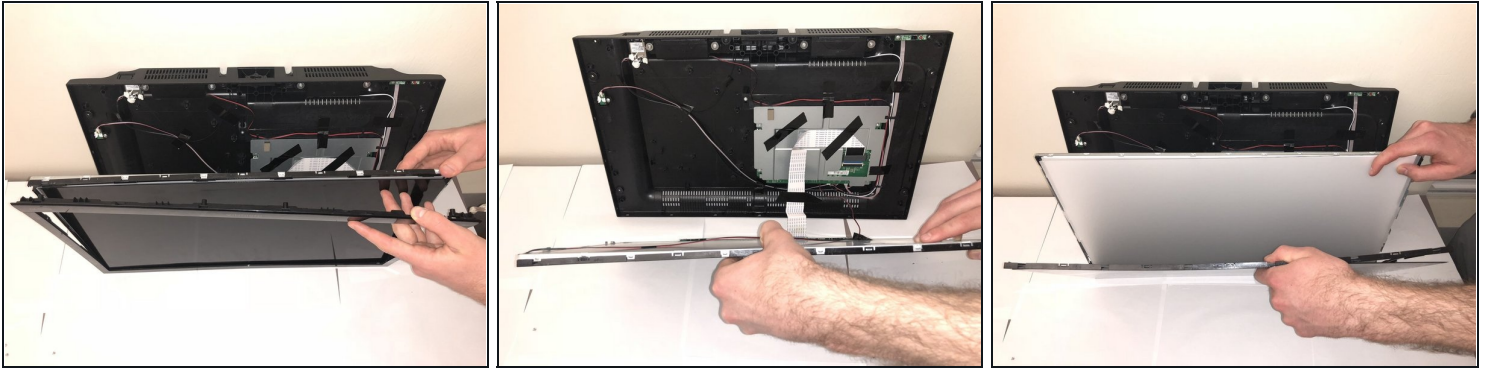
- Remove the tape that is holding the silver rectangular piece from the house.

Step 7



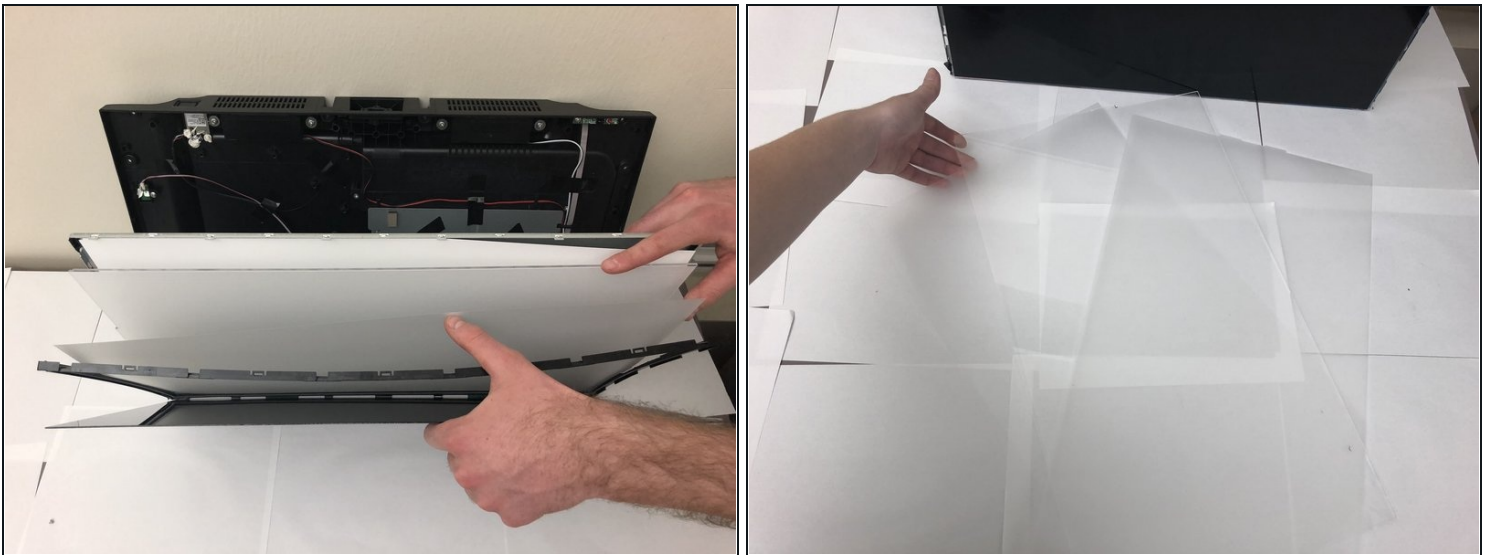
- Using the Phillips 00 Screwdriver, remove the screws that are also holding the silver rectangular piece to the house.

Step 8



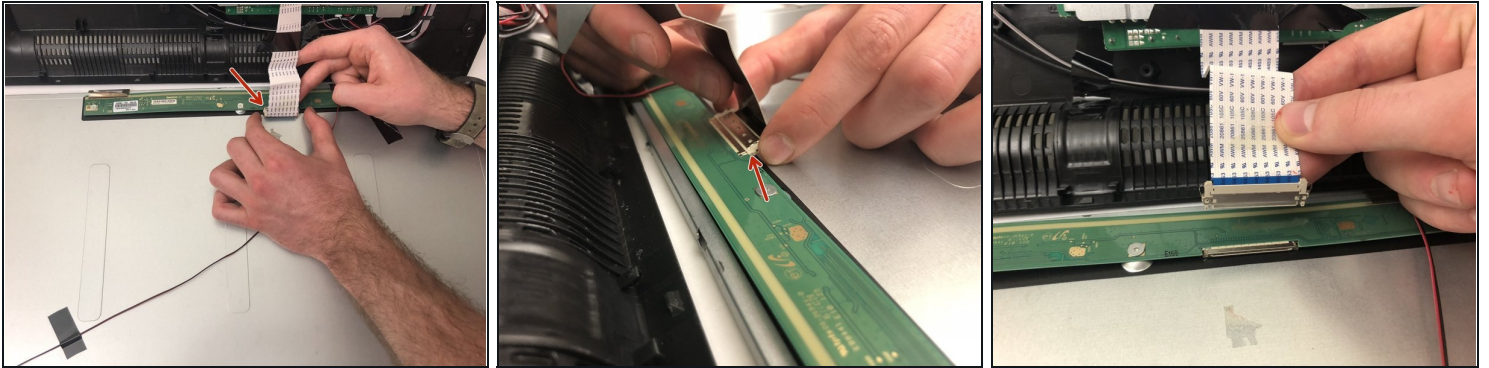
- Remove the plastic casing from the glass screen.
- Then carefully remove metal backing from glass screen and separate the layer of plastic from the glass screen.

Step 9



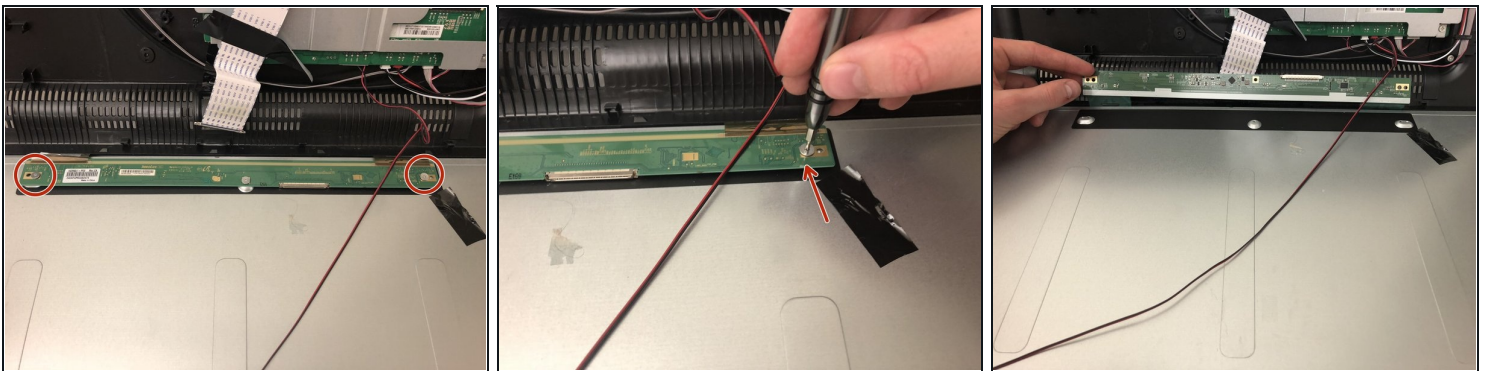
- Separate plastic screen protector layers from both the backing and glass screen.
- ① The second picture provides image of what the plastic screen protectors look like.

Step 10



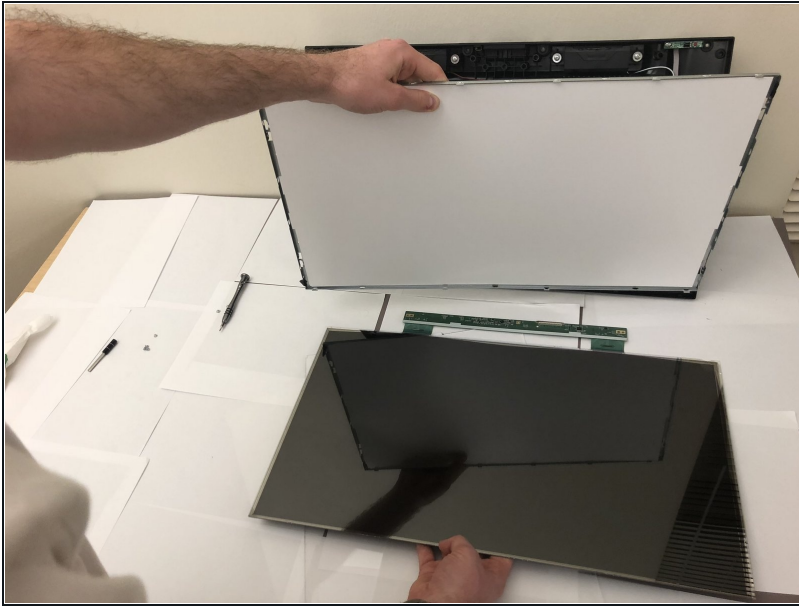
- Find the display board and unplug the white ribbon cord from the board.
- Squeeze both sides of the plug to release the cord.

Step 11



- Using same screwdriver, unscrew the screws that are on the green display board.
- Separate the green display board from its metal backing.

Step 12



- ① All cables connecting screen to frame are now detached.
- Now pull apart and separate the screen.

To reassemble your TV, follow these instructions in reverse order.