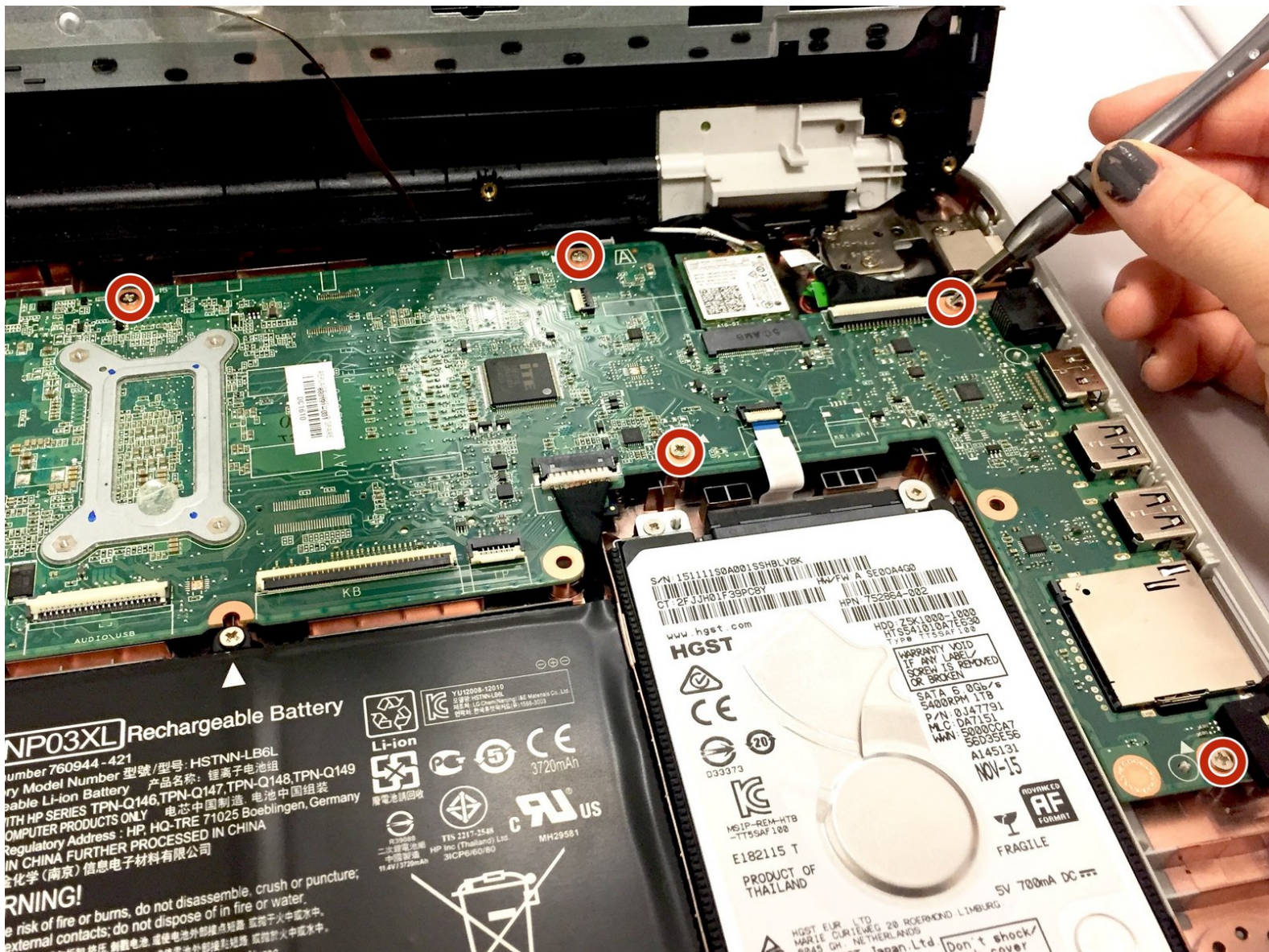




# HP Envy x360 15-u473cl Motherboard Replacement

Replace the motherboard of your HP Envy x360 15-u473cl.

Written By: Maximillian McDonald



# INTRODUCTION

The motherboard can wear out over time. This guide will show you how to replace the motherboard.



## TOOLS:

- [Spudger](#) (1)
- [iFixit Opening Tools](#) (1)
- [Phillips #0 Screwdriver](#) (1)
- [Phillips #00 Screwdriver](#) (1)

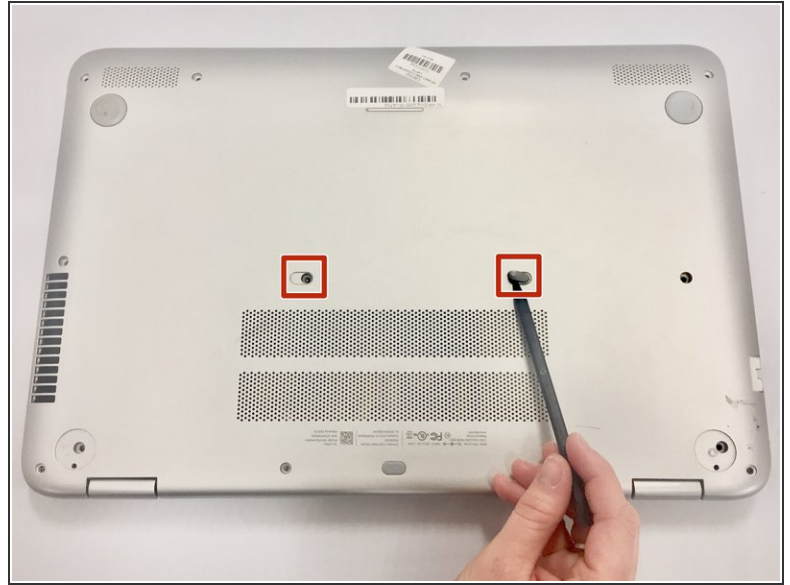
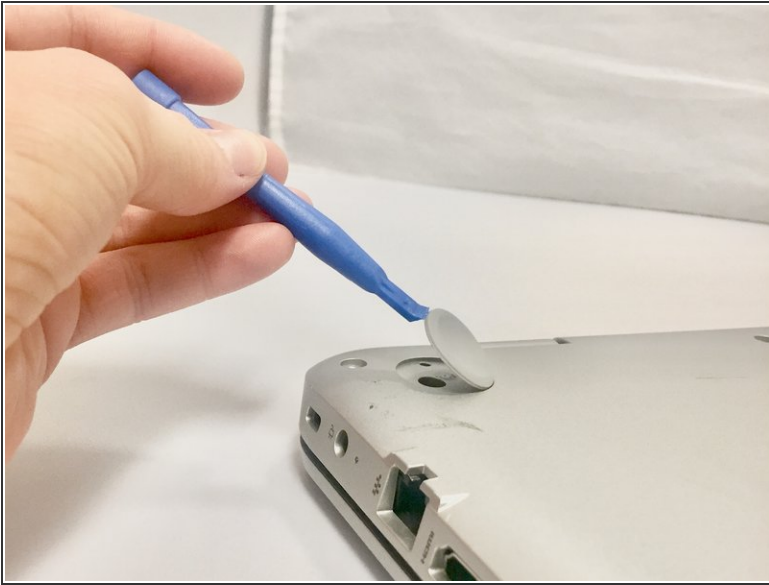


## PARTS:

- [HP ENVY TouchSmart \(m7-j020dx\) Motherboard](#) (1)



## Step 1 — Battery



**i** Power off your laptop before beginning disassembly.

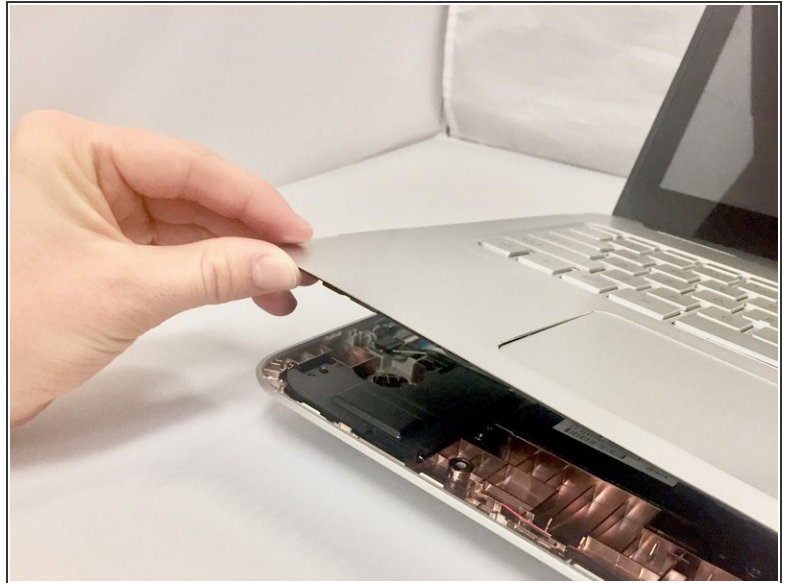
- Pry off the 2 rear rubber pads (closest to the laptop hinge) using the plastic opening tool to reveal two screws.
- Remove the 2 anti-tamper proof covers using the spudger to reveal two screws.

## Step 2



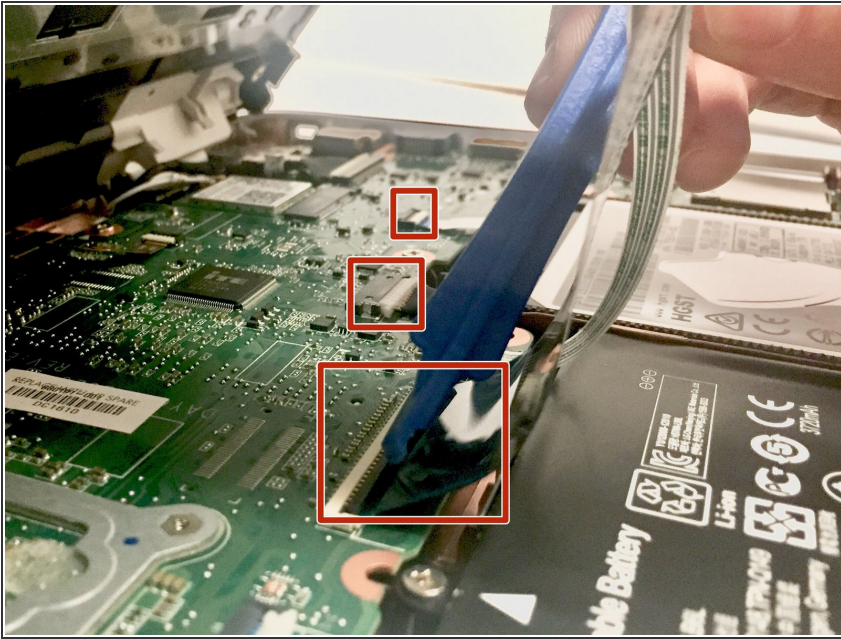
- Remove the fourteen 7mm screws using the Phillips #0 screwdriver from the bottom of the laptop.

### Step 3



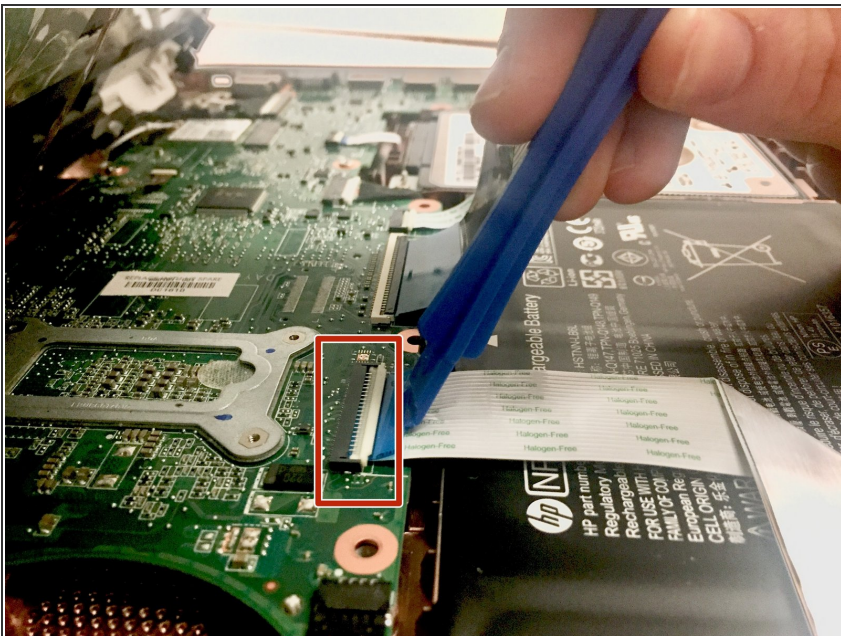
- Turn the device right side up and open the lid.
- Insert the plastic opening tool in between the keyboard plate and the base of laptop.
- Run the tool along seem, prying up as you go.
- Separate the keyboard plate from the base, lifting from the front.

## Step 4



- There are 3 ribbon cables (black, white, and copper color) connecting the computer to the keyboard plate. Disconnect the 3 ribbon cables using the plastic opening tool by prying up the latches holding each cable in place.
- Remove the keyboard plate from the device.

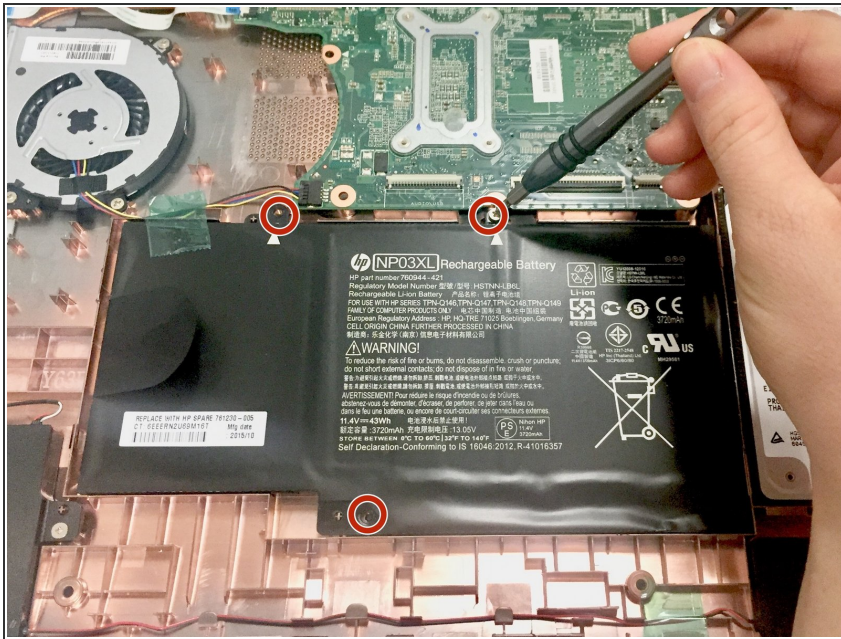
## Step 5



- Remove the thick white ribbon cable covering the battery using the plastic opening tool by prying up the latches attaching each end.

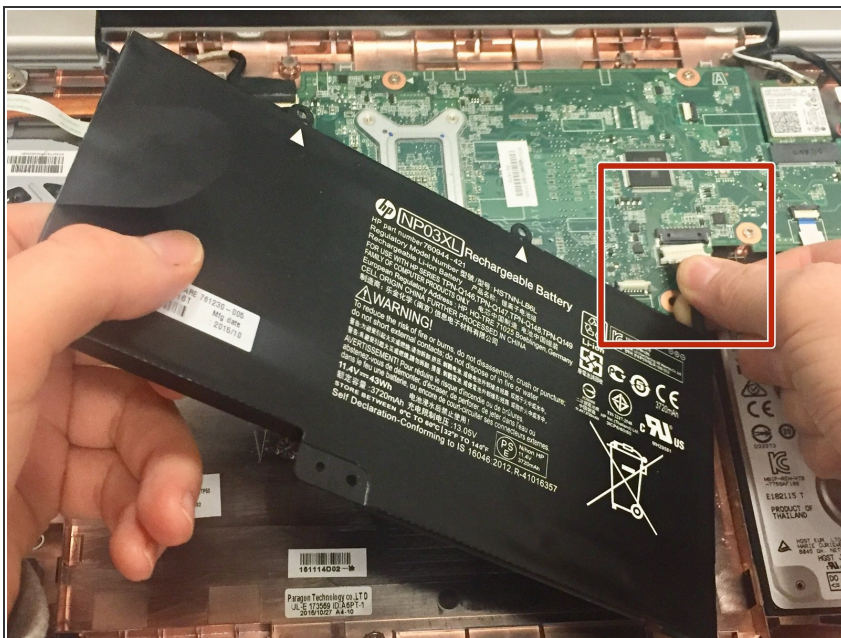


## Step 6



- Remove the three 4mm screws using the Phillips #0 screwdriver.

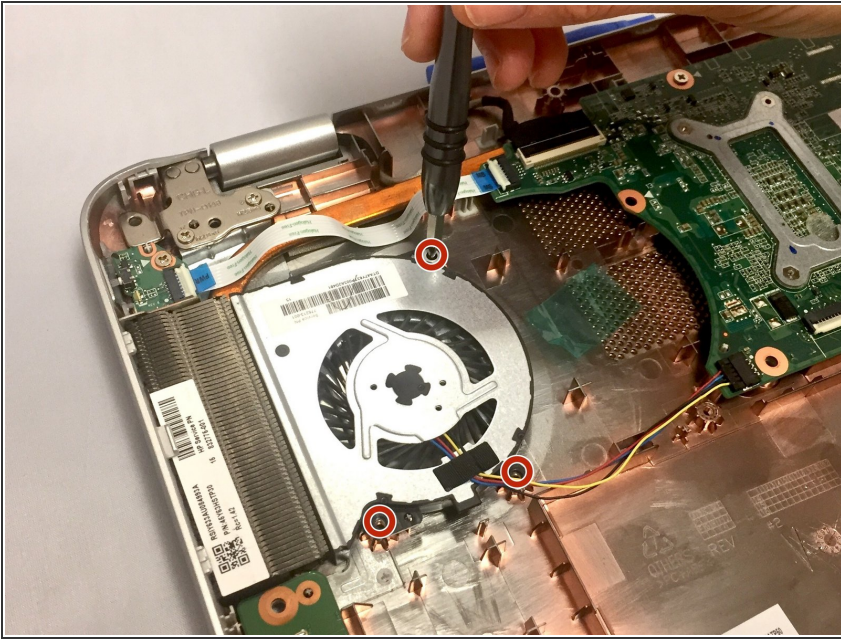
## Step 7



- Disconnect the battery from the motherboard.
- There may be tamper-proof tape holding the battery in place. Remove the tape if present.
- Remove the battery from the device.

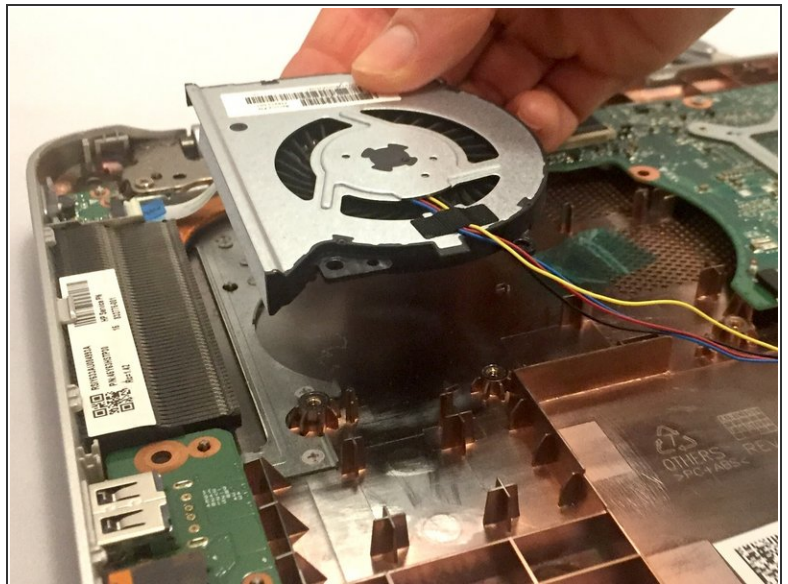
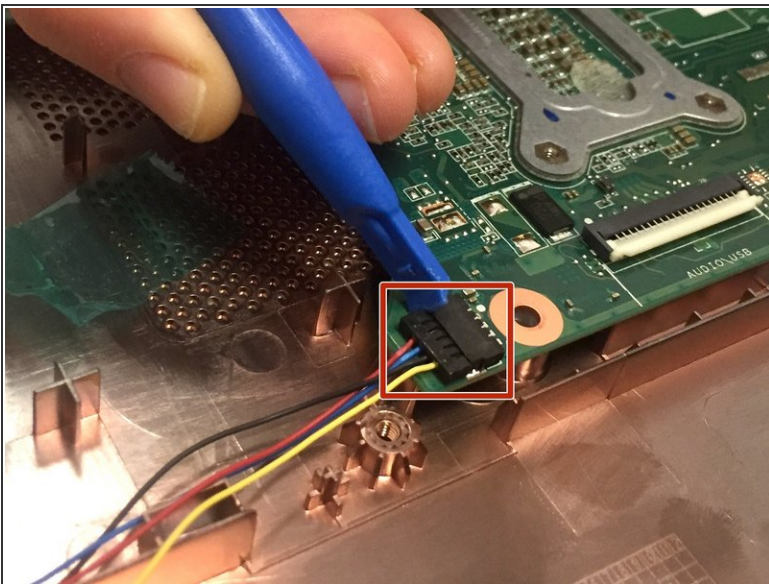


## Step 8 — Fan



- Remove the three 4mm screws using the Phillips #0 screwdriver from the device fan.

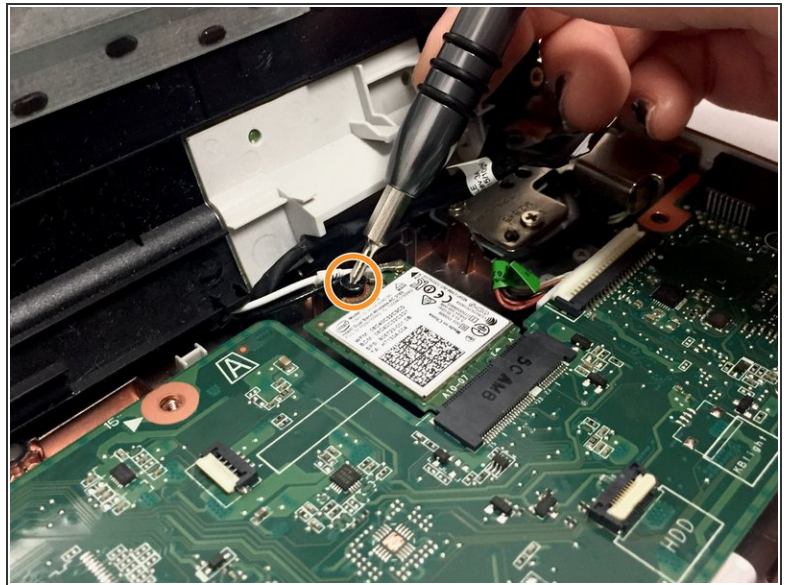
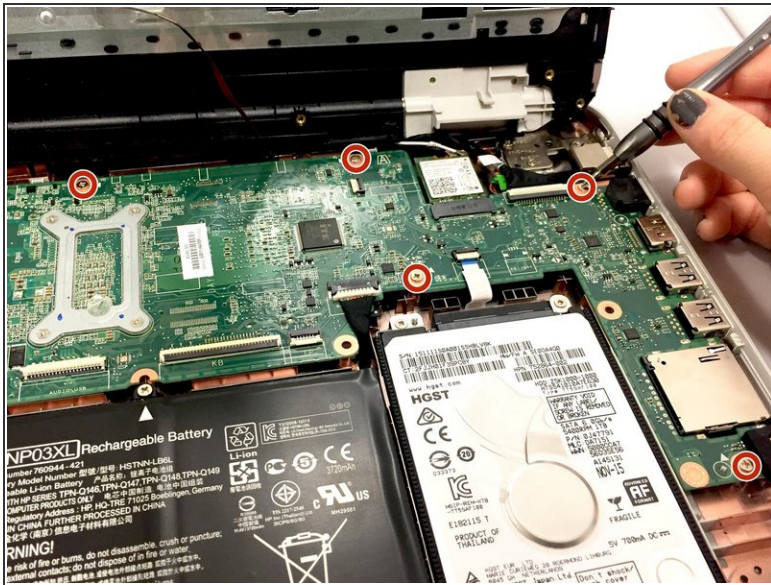
## Step 9



- Disconnect the fan from the motherboard using the spudger.
- Remove the fan from the device.

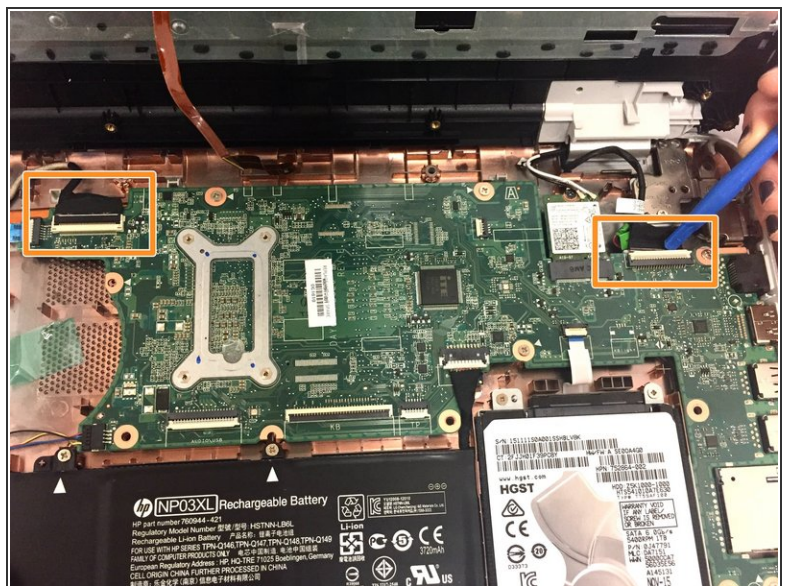
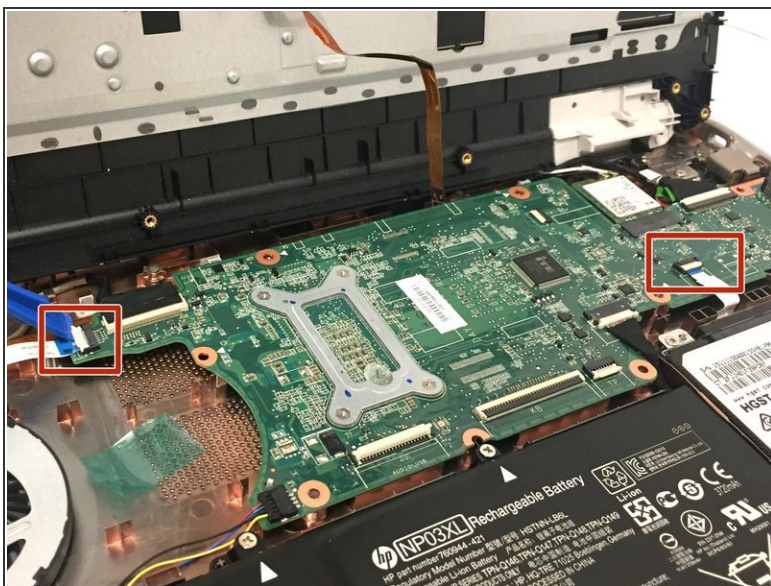


## Step 10 — Motherboard



- Remove the five 4mm screws with the Phillips #0 screwdriver.
- Remove one 3mm screw with the Phillips #00 screwdriver.

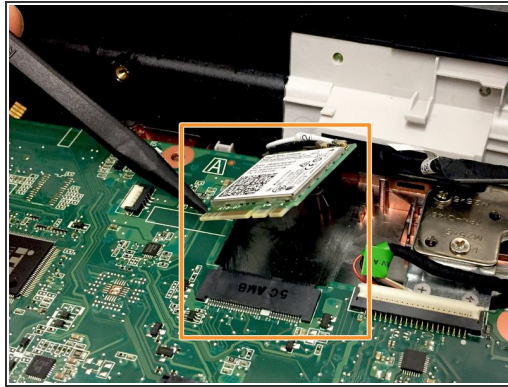
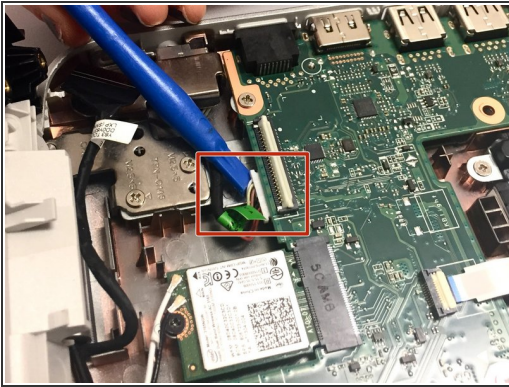
## Step 11



- Disconnect the 2 white ribbon cables using the plastic opening tool.
- Disconnect the two black cable bundles using the plastic opening tool.



## Step 12



- Disconnect the charging port wire bundle from the motherboard using the plastic opening tool.
- Disconnect the wireless card by pulling away from the black transistor using the spudger.
- Remove the motherboard.

To reassemble your device, follow these instructions in reverse order.