



Toshiba Satellite P75-A7100 Display Screen Replacement

Replacing the display screen.

Written By: Mayra Zuniga



INTRODUCTION

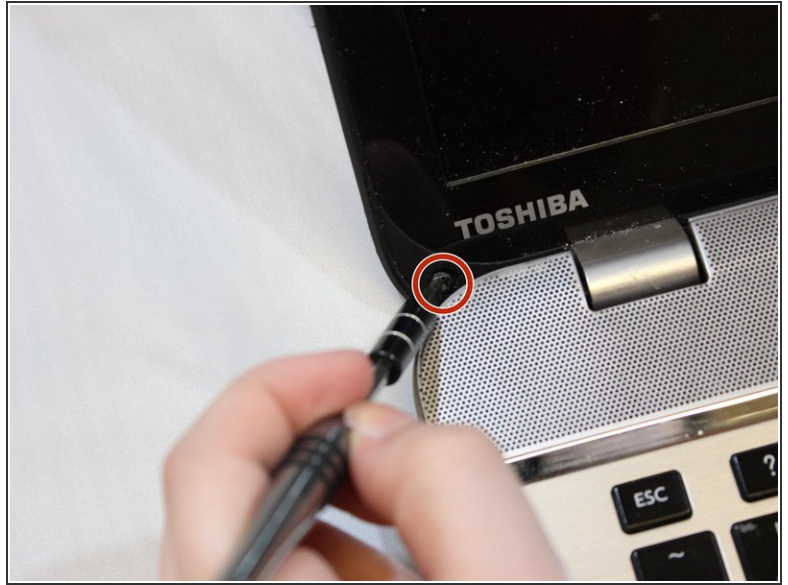
This guide will show you how to replace the computer's display screen. Replacing the display screen is necessary when the screen won't turn on or it's cracked. Before conducting our steps, please make sure your computer is powered off.



TOOLS:

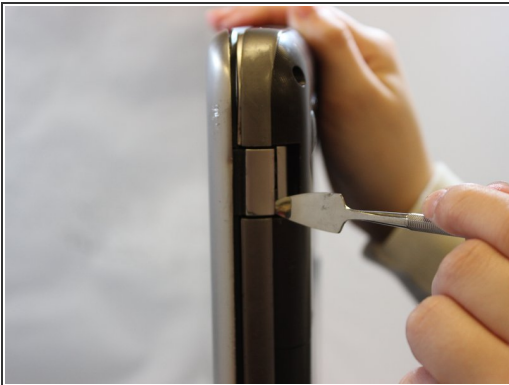
- [Spudger](#) (1)
 - [Phillips #1 Screwdriver](#) (1)
-

Step 1 — Display Screen



- Open the laptop and unscrew each of the screws that are in the corners of the screen using a Phillips #1 screwdriver.

Step 2



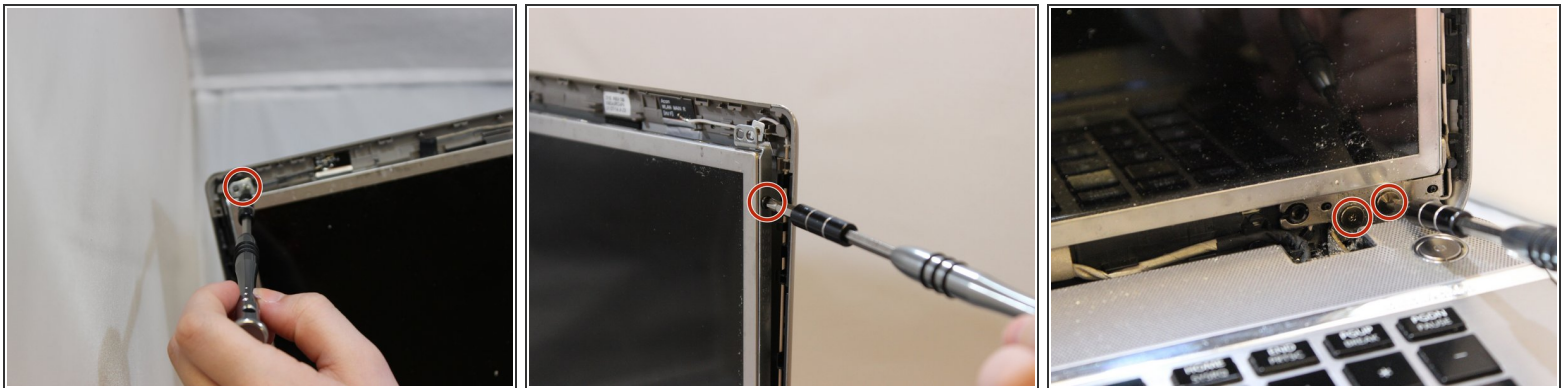
- Using a metal spudger, insert the spudger around the edges and the bottom to detach the frame from the screen.

Step 3



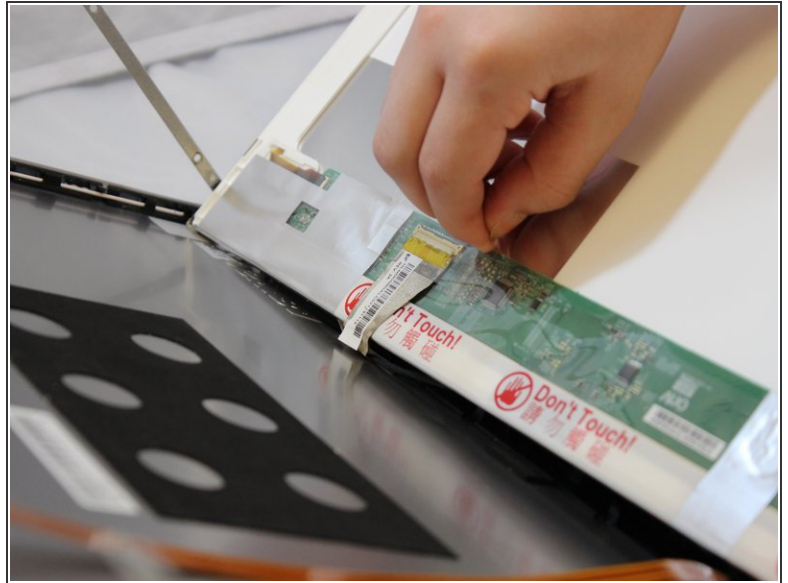
- Remove the frame from the device.

Step 4



- Using a Phillips #1 screwdriver, unscrew all of the screws on the sides of the screen.

Step 5



- Disconnect the webcam from the screen and unhook any tape.

Step 6



- Remove the display from the device and add the new one.

To reassemble your device, follow these instructions in reverse order.