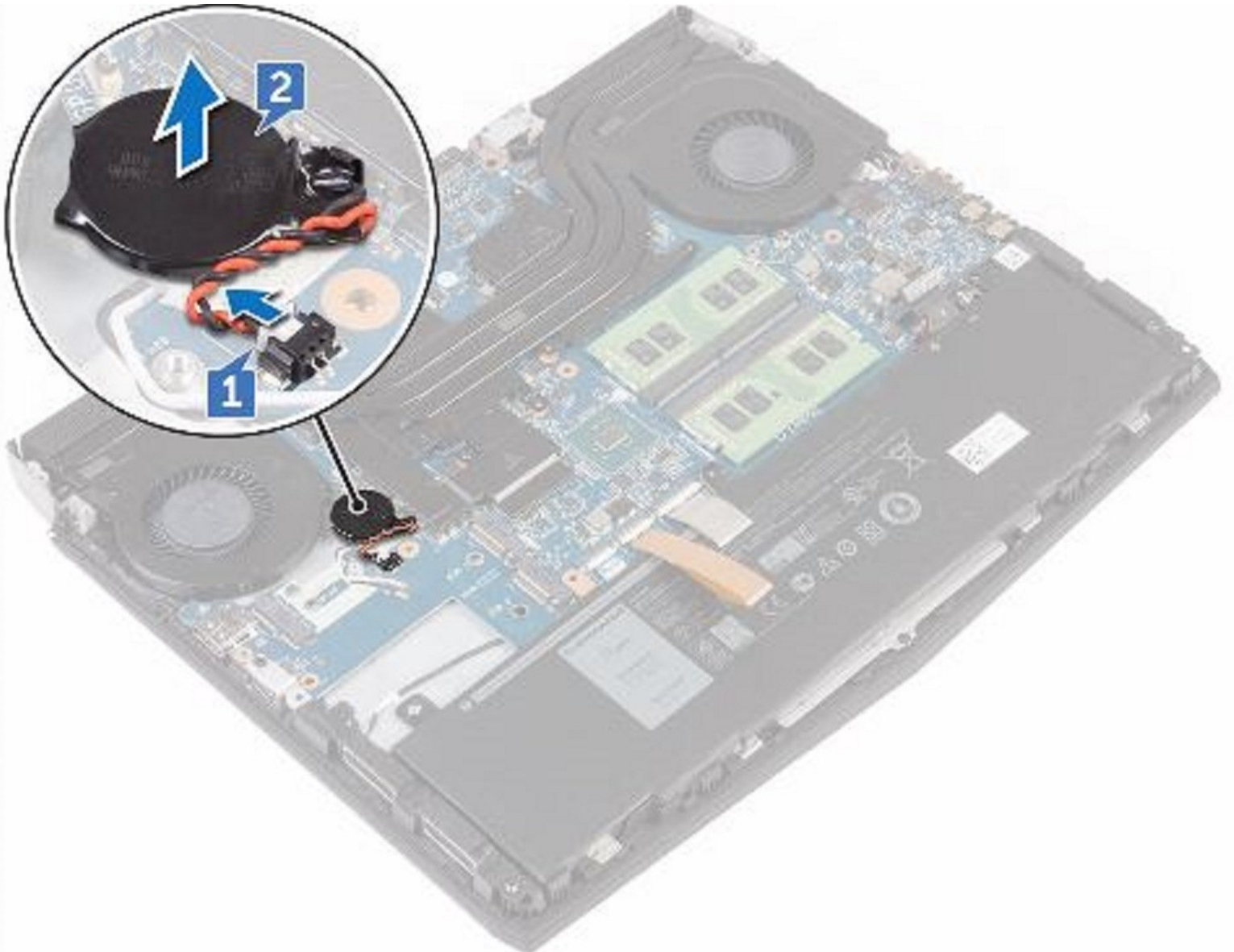




# Dell Alienware 13 R3 Coin-Cell Battery Replacement

In this guide, we will show you how to remove and replace the coin-cell battery.

Written By: Terrence15



---

# INTRODUCTION

In this guide, we will show you how to remove and replace the coin-cell battery.



## TOOLS:

- [Pro Tech Toolkit](#) (1)
-

## Step 1 — Loosen the Screws



**⚠ WARNING:** Before working inside your computer, read the safety information that shipped with your computer and follow the steps in [Before Working Inside Your Computer](#). After working inside your computer, follow the instructions in [After Working Inside Your Computer](#).

- Loosen the five captive screws that secure the base cover to the computer base.

## Step 2 — Pry the Base Cover



- Using a plastic scribe, gently pry the base cover to release the tabs on the base cover from the slots on the computer base.

### Step 3 — Lift the Base Cover



- Lift the base cover off the computer base.

### Step 4 — Disconnect the Battery Cable



- Using a plastic scribe, disconnect the battery cable from the system board.

## Step 5 — Press and Hold the Power-Button



- Press and hold the power button for five seconds to ground the system board.

## Step 6 — Connect the Battery Cable



- Connect the battery cable to the system board.

## Step 7 — Slide the Tabs



- Slide the tabs on the **NEW** base cover into the slots on the computer base and snap the base cover into place

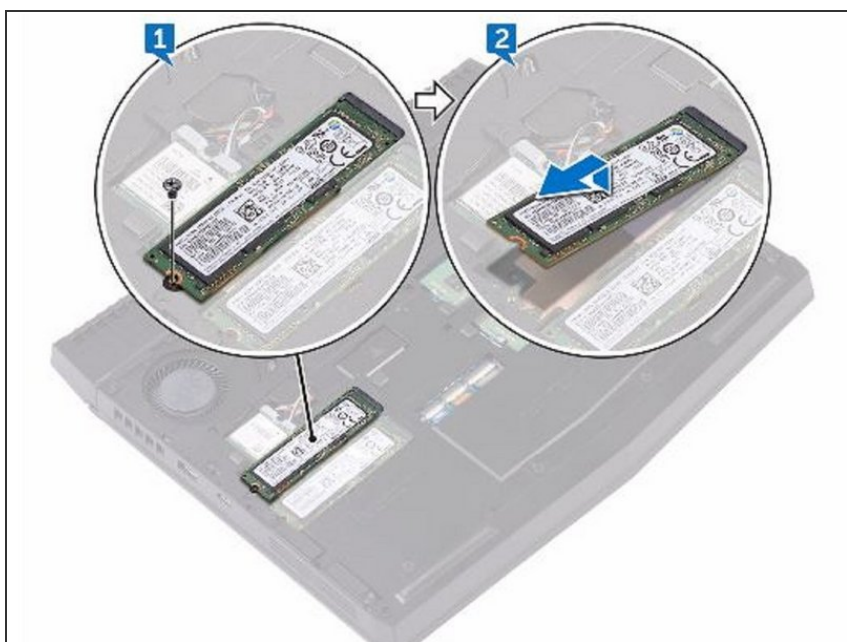
## Step 8 — Tighten the Five Captive Screws



- Tighten the five captive screws that secure the base cover to the computer base.



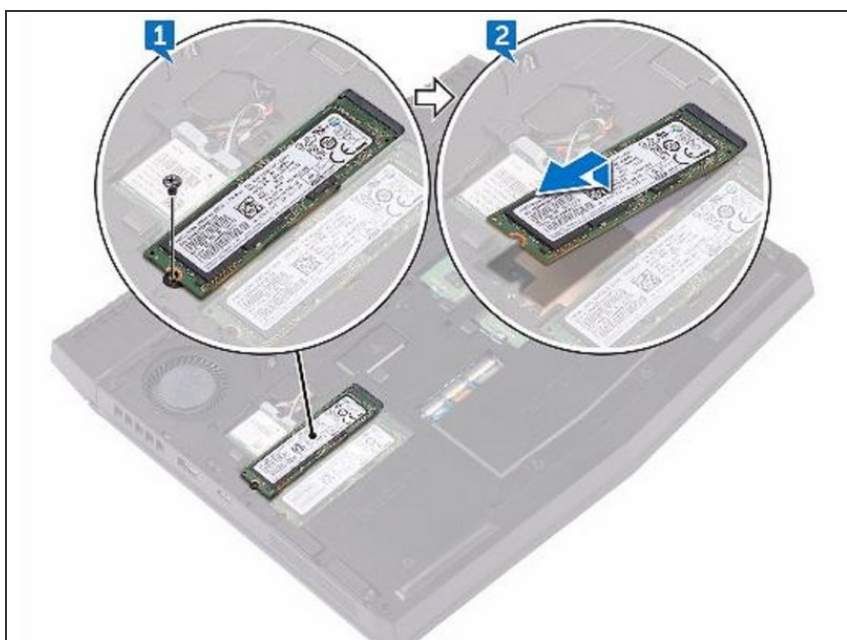
## Step 9 — Remove the Screw



**⚠ WARNING:** Before working inside your computer, read the safety information that shipped with your computer and follow the steps in [Before Working Inside Your Computer](#). After working inside your computer, follow the instructions in [After Working Inside Your Computer](#).

- Remove the screw (M2x3) that secures the solid-state drive to the computer base.

## Step 10 — Lift and Slide the Solid-State Drive



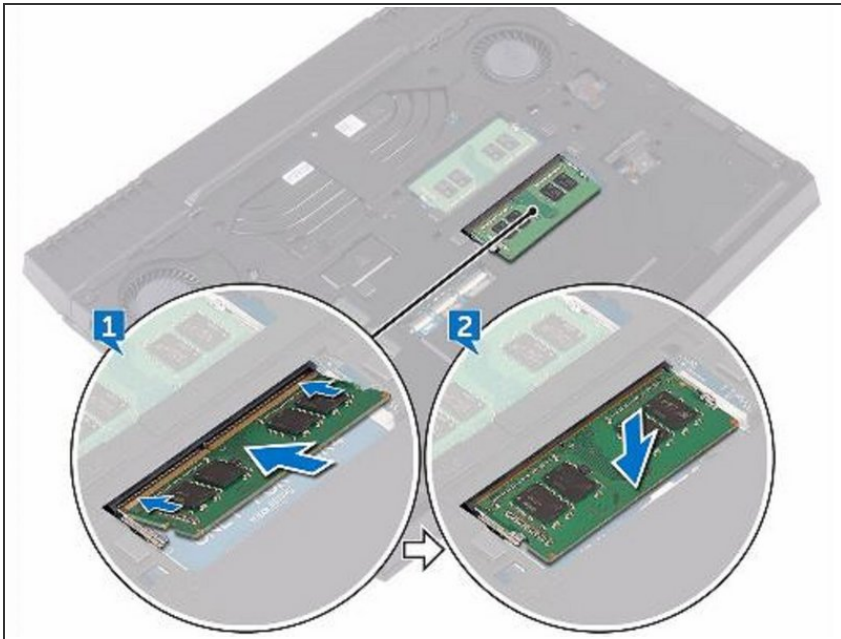
- Lift and slide the solid-state drive from the solid-state drive slot.

## Step 11 — Align the Notch



- Align the notch on the **NEW** solid-state drive with the tab on the solid-state drive slot and slide the solid-state drive into the solid-state drive slot.

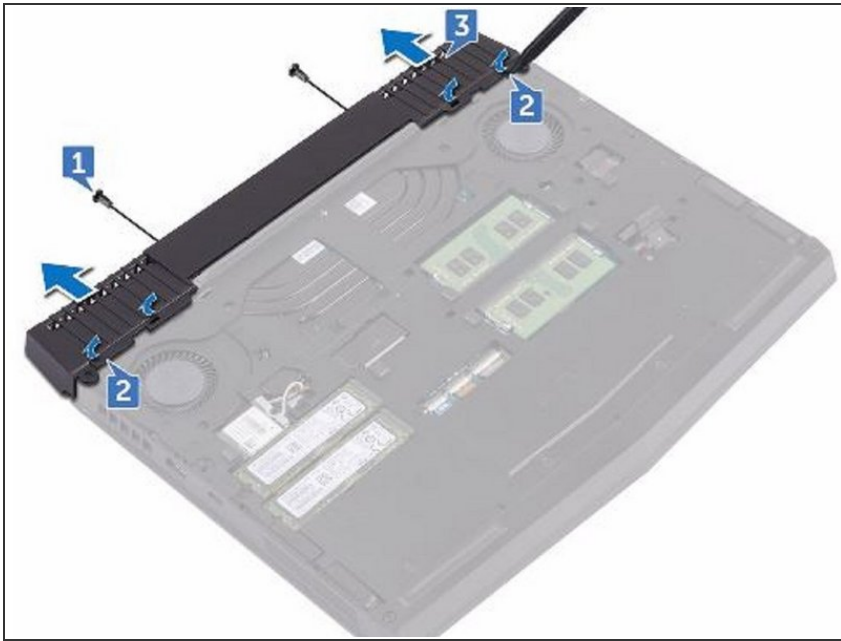
## Step 12 — Press the Memory Module



- Press the memory module down until it clicks into place.

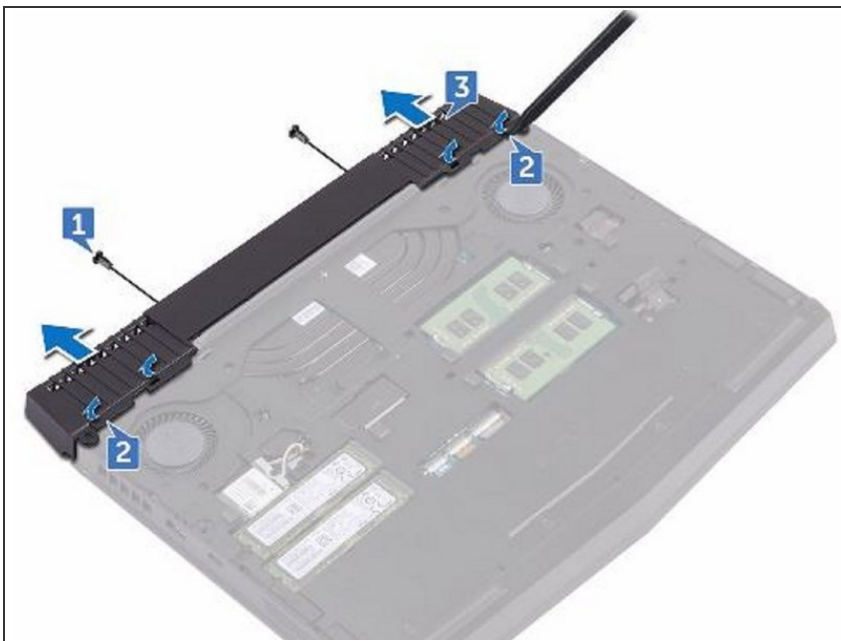


## Step 13 — Remove the Screws



- Remove the two screws (M2.5x6L) that secure the rear-I/O cover to the palm-rest assembly.

## Step 14 — Using a Plastic Scribe



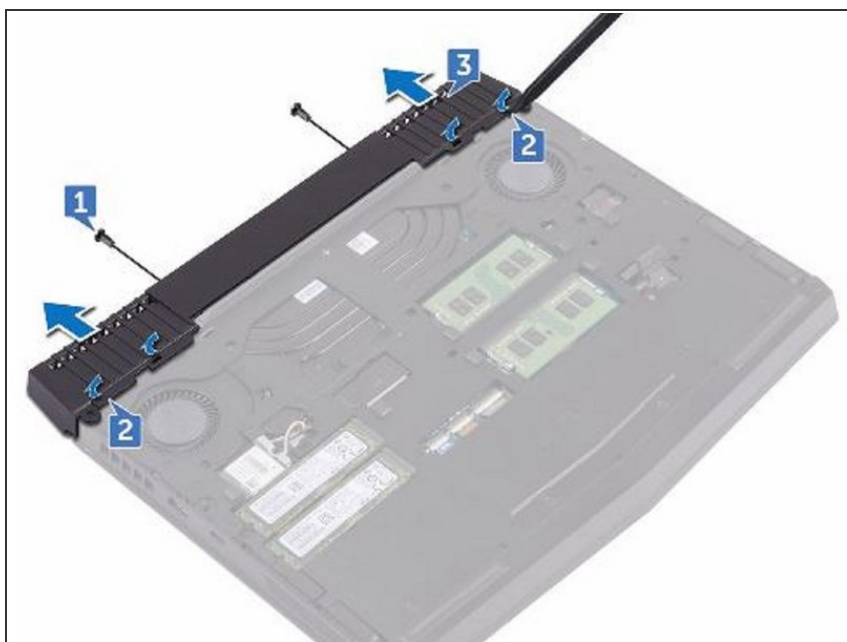
- Using a plastic scribe, gently release the tabs that secure rear-I/O cover to the computer base.

## Step 15 — Removing the Rear-I/O



- Slide and remove the rear-I/O cover from the computer base.

## Step 16 — Sliding the Rear-I/O



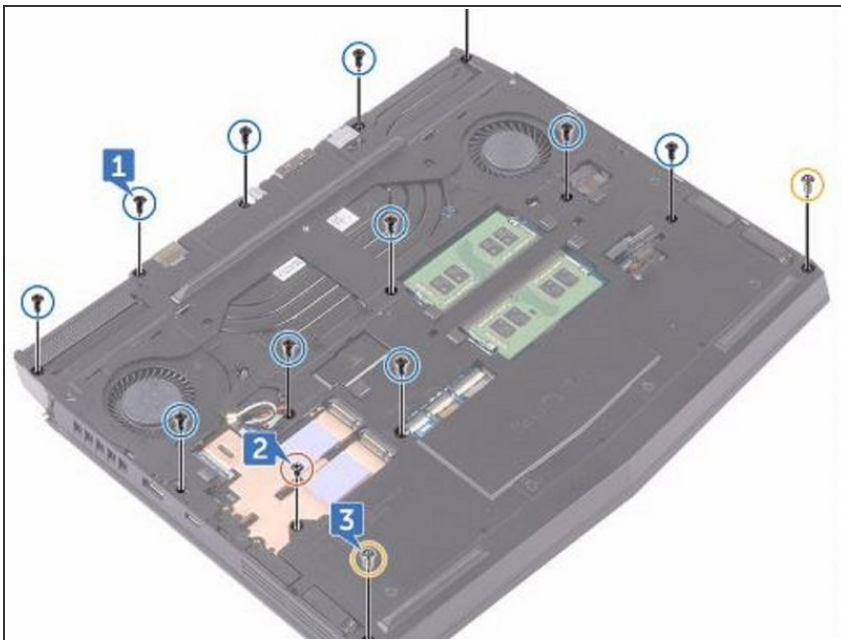
- Slide the **NEW** rear-I/O cover into the slots on the computer base and snap the rear-I/O cover into place.

## Step 17 — Replace the two Screws



- Replace the two screws (M2.5x6L) that secure the rear-I/O cover to the palm-rest assembly.

## Step 18 — Remove the Screws

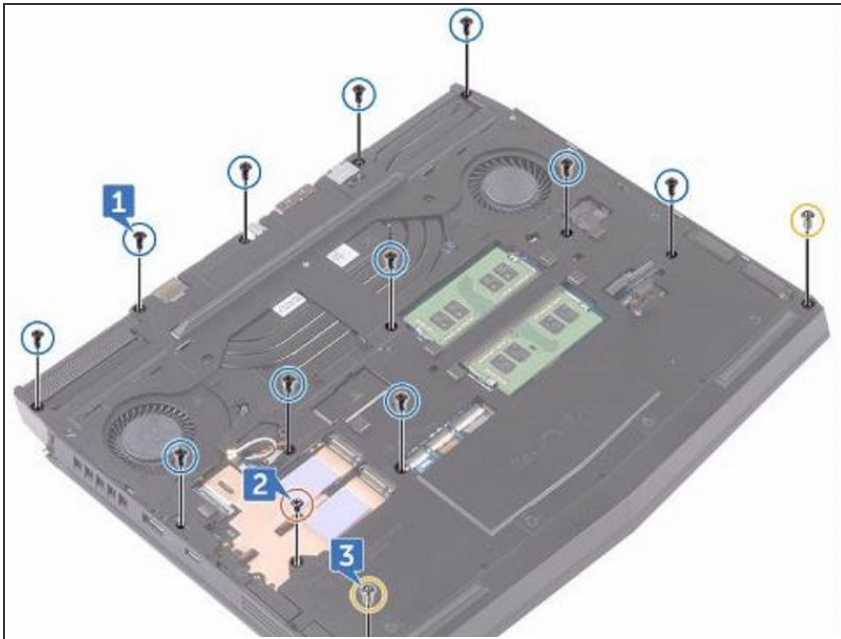


**⚠ WARNING:** Before working inside your computer, read the safety information that shipped with your computer and follow the steps in [Before Working Inside Your Computer](#). After working inside your

computer, follow the instructions in [After Working Inside Your Computer](#).

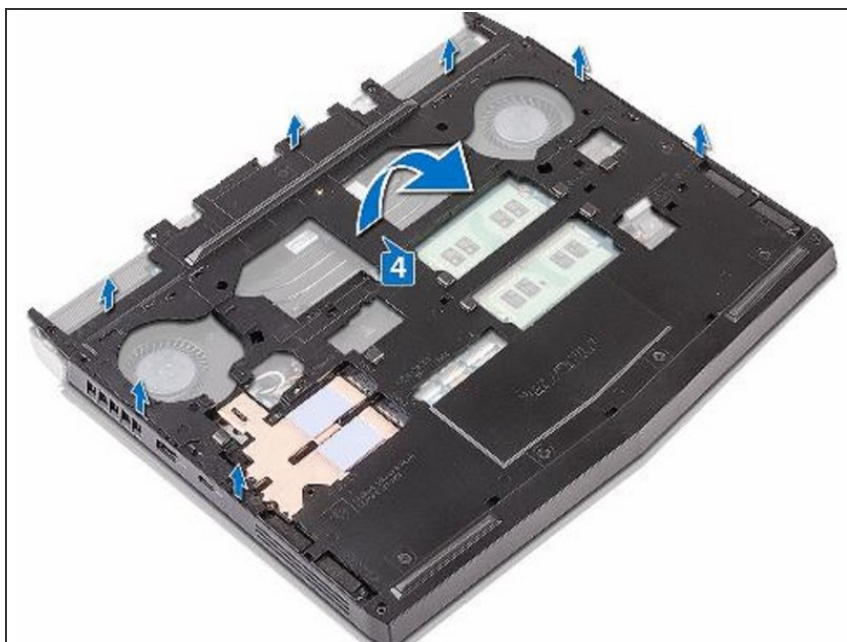
- Remove the eleven (M2.5x6L) screws that secure the computer base to the palm-rest assembly.

## Step 19 — Remove the Screw



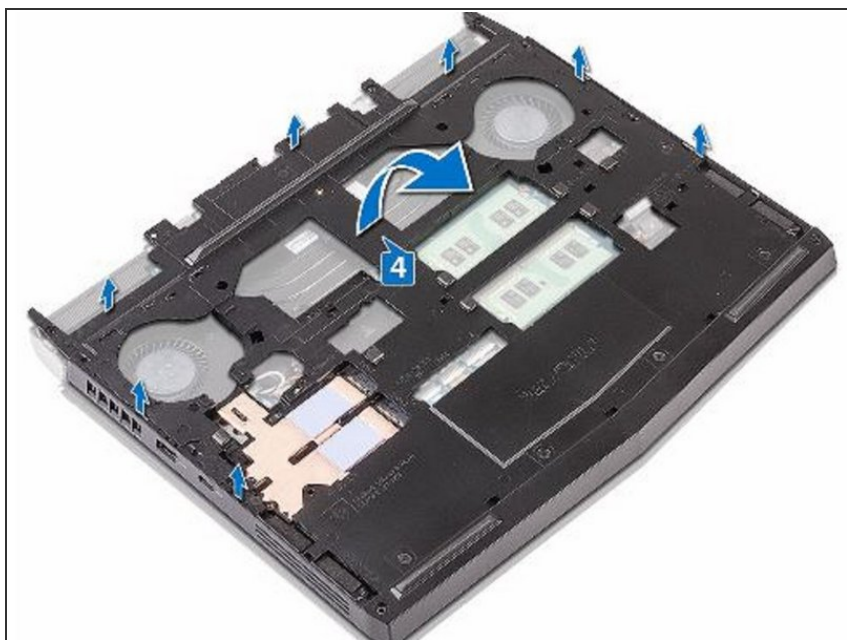
- Remove the (M2x3) screw that secures the computer base to the palm-rest assembly.

## Step 20 — Remove the Two Screws



- Remove the two (M2.5x6L) screws that secure the computer base to the palm-rest assembly.

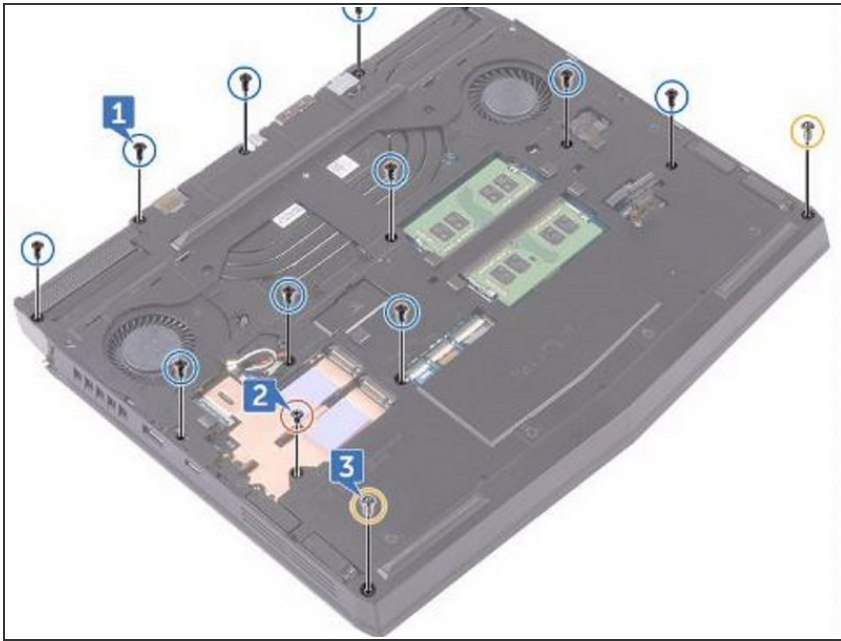
## Step 21 — Lift the Computer Base



- Lift the computer base from the palm-rest assembly.



## Step 22 — Align the Screw Holes



- Align the screw holes on the **NEW** computer base with the screw holes on the palm-rest assembly.

## Step 23 — Replace the Screws



- Replace the two (M2.5x6L) screws that secure the computer base to the palm-rest assembly.

## Step 24 — Replace the Screw



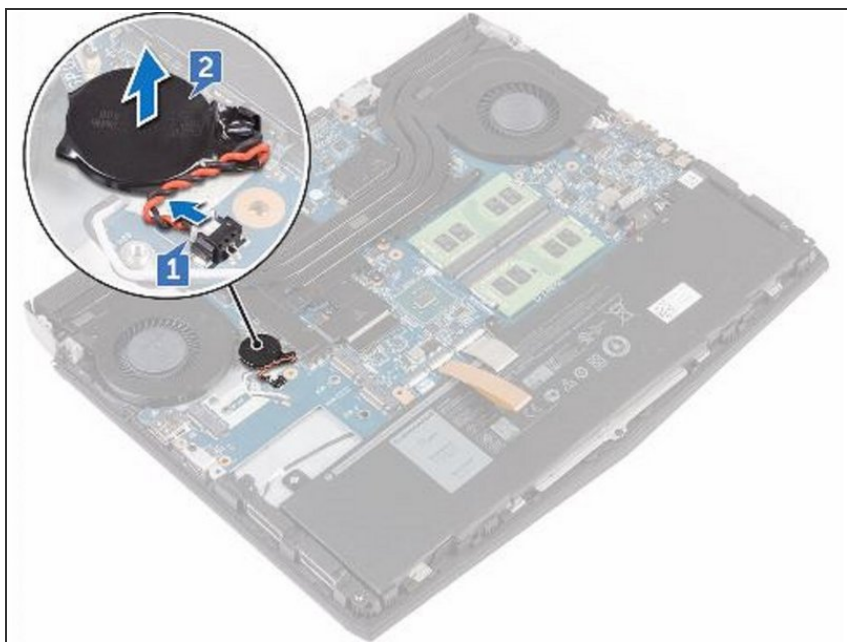
- Replace the (M2x3) screw that secures the computer base to the palm-rest assembly.

## Step 25 — Replace the Eleven Screws



- Replace the eleven (M2.5x6L) screws that secure the computer base to the palm-rest assembly.

## Step 26 — Disconnecting the Coin-Cell Battery

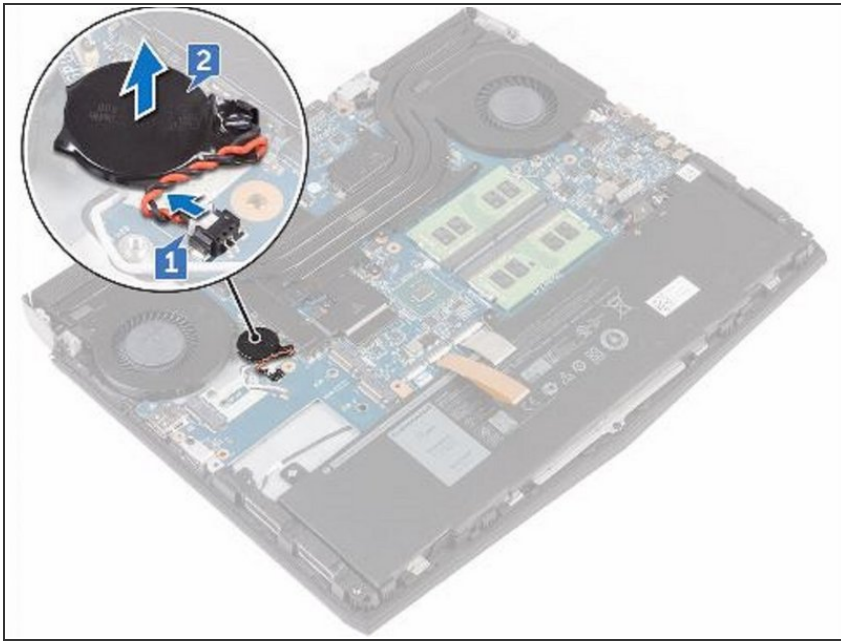


**⚠ WARNING:** Before working inside your computer, read the safety information that shipped with your computer and follow the steps in [Before Working Inside Your Computer](#). After working inside your computer, follow the instructions in [After Working Inside Your Computer](#).

**⚠ CAUTION:** Removing the coin-cell battery resets the BIOS setup program's settings to default. It is recommended that you note the BIOS setup program's settings before removing the coin-cell battery.

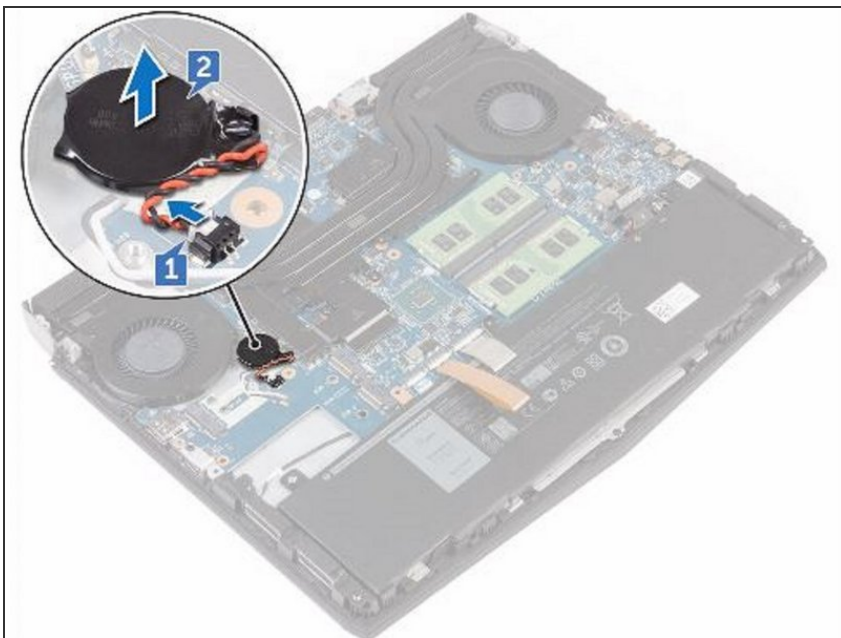
- Disconnect the coin-cell battery cable from the system board.

## Step 27 — Peeling the Coin-Cell Battery



- Gently peel off the coin-cell battery along with its cable off the palm-rest assembly.

## Step 28 — Adhere the Coin-Cell Battery



- Adhere the **NEW** coin-cell battery to the palm-rest assembly.

## Step 29 — Connect the Coin-Cell Battery



- Connect the coin-cell battery cable to the system board.

To reassemble your device, follow these instructions in reverse order.