



Toshiba Satellite C55-B5200 Battery Replacement

Battery uses a 45W (10V 2.37A) 100-240V/50-60Hz...

Written By: Pablo Andrade



INTRODUCTION

Battery uses a 45W (10V 2.37A) 100-240V/50-60Hz AC Adapter and a 4 cell/45Wh lithium ion battery.



TOOLS:

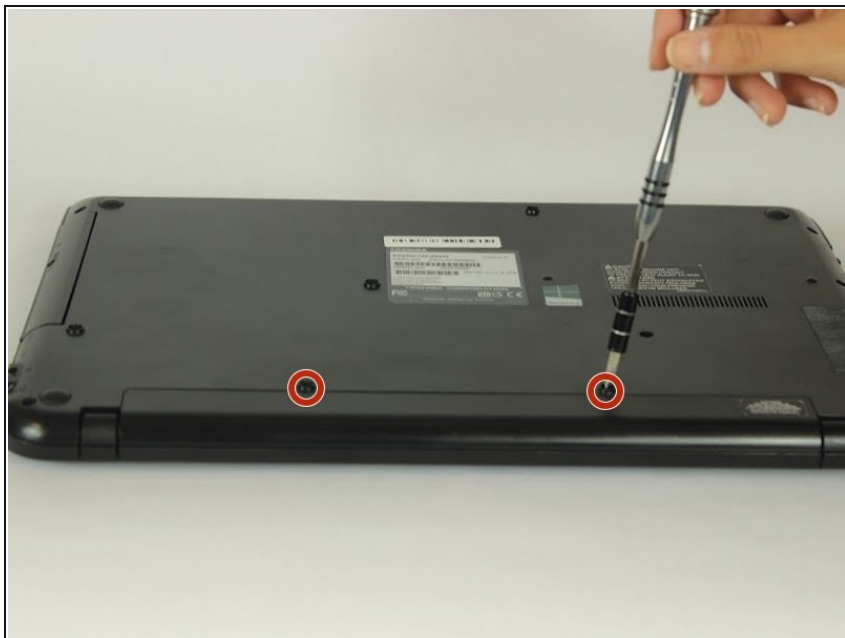
Phillips #0 Screwdriver (1)



PARTS:

Toshiba TS-C55D Battery (1)

Step 1 — Battery



- Turn the laptop off and remove all sources of power.
- Flip the laptop over so that way the bottom is facing towards you.
- Remove the two 6.6mm Phillips #0 screws from the battery.

Step 2



- Pull the battery out of the laptop.

To reassemble your device, follow these instructions in reverse order.