



KRUPS Milk Foamer Type XL2000 Disassembly

In this Fast Fix disassembly, we will teach you...

Written By: Joost Domnisse



INTRODUCTION

In this Fast Fix disassembly, we will teach you how to take apart your KRUPS milk foamer. Whether it is to fix a small problem or just out of curiosity, this guide will help you make a full disassembly using standard tools and making sure no parts are damaged in the process.

TOOLS:

[TR10 Torx Security Screwdriver](#) (1)

[T20 Torx Screwdriver Bit](#) (1)

[Variable Sized Monkey Wrench](#) (1)

Step 1 — KRUPS Milk Foamer Type XL2000 Disassembly



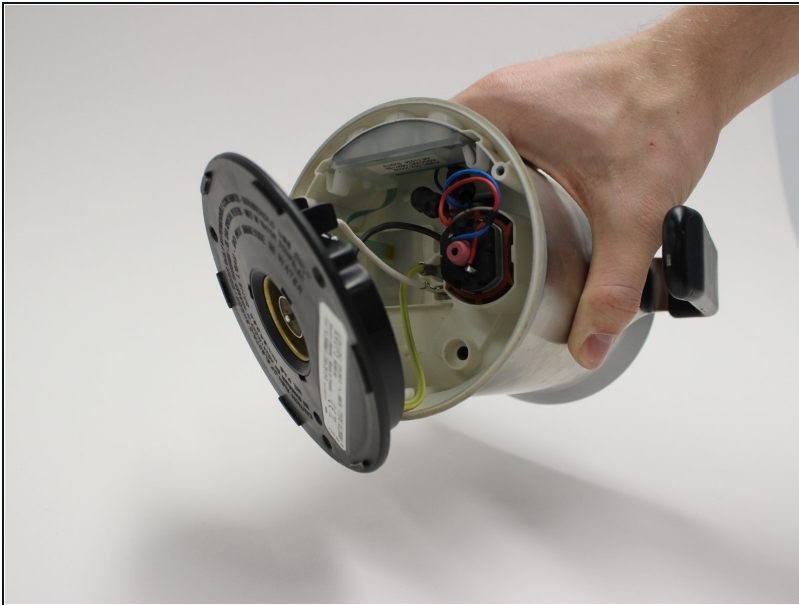
- Take off the plexiglass top.
- Remove the white milk spinner from the inside of the foamer.

Step 2



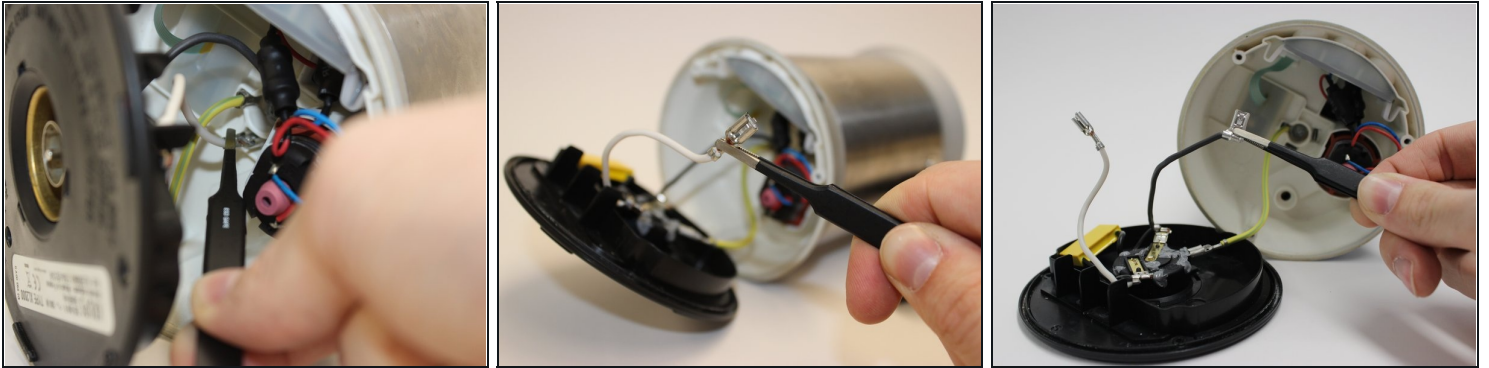
- Remove the 12mm Torx screws (x3) from the bottom of the foamer using a Torx TR10 screwdriver.

Step 3



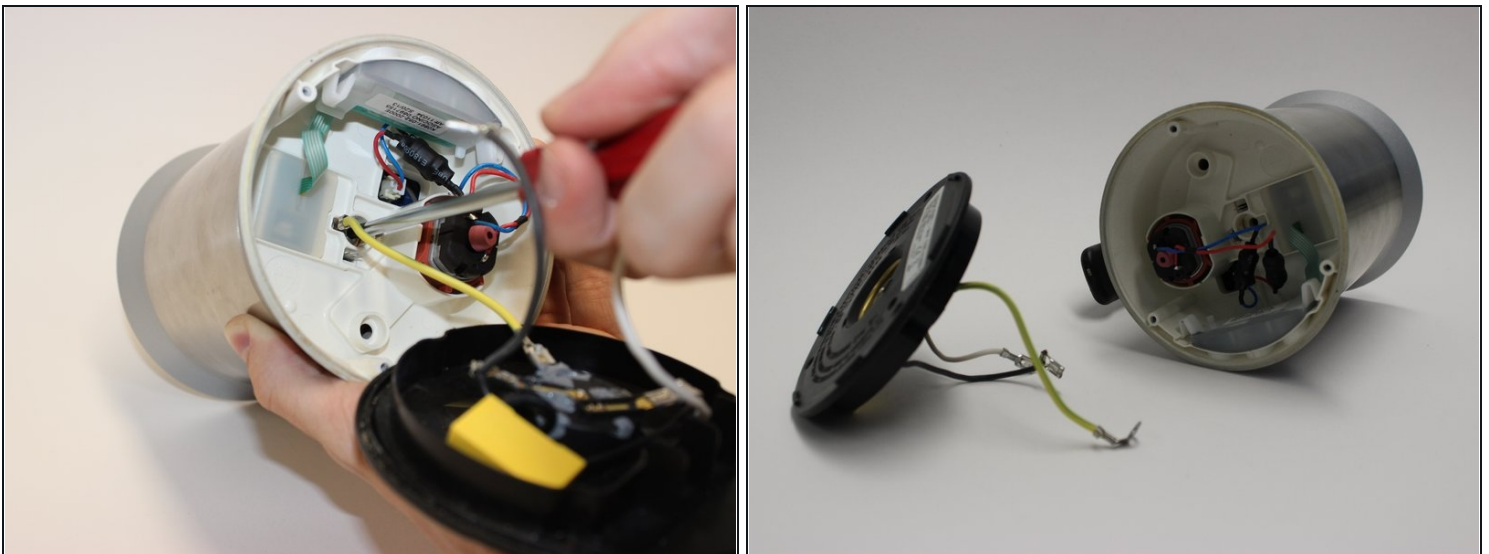
- Open the bottom of the foamer.

Step 4



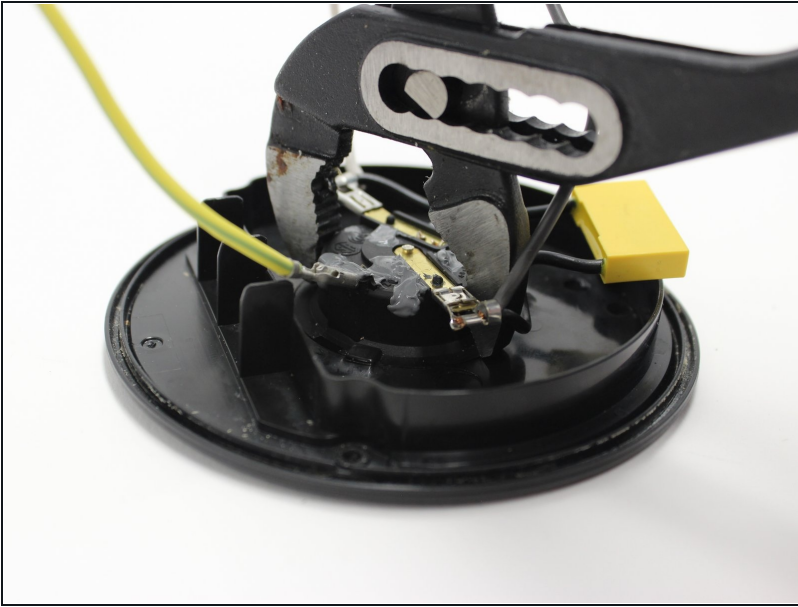
- Take out the grey and white power cables by pulling out the slide connectors from the base.

Step 5



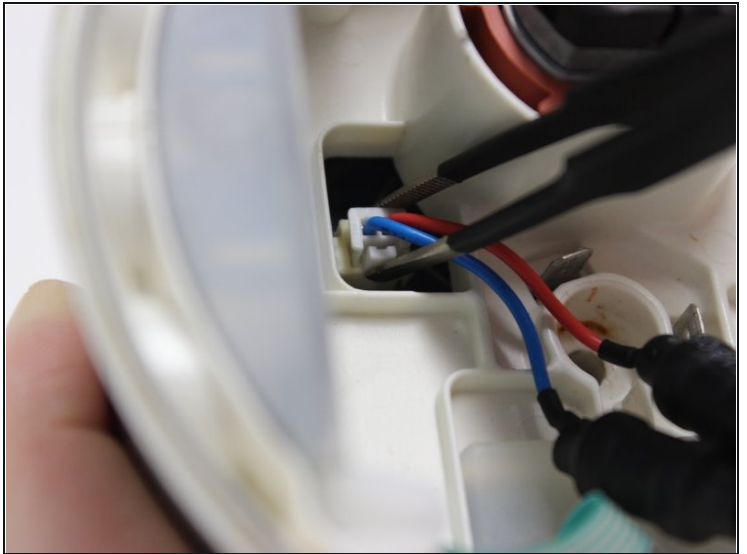
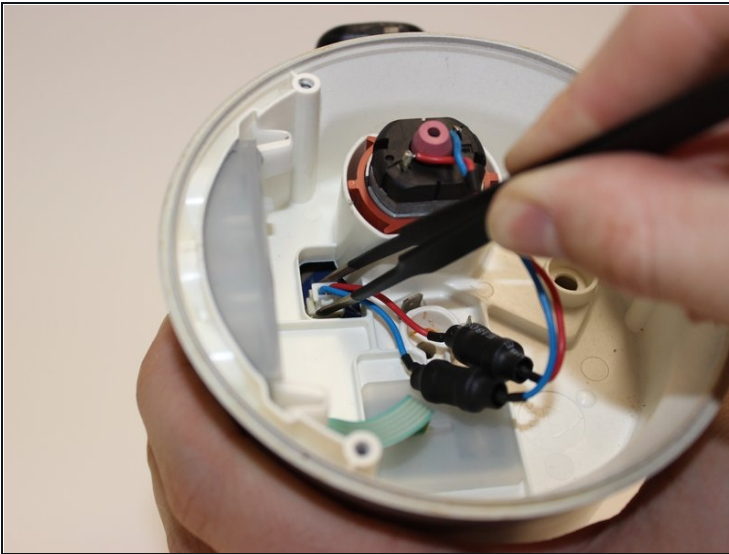
- Remove the 16mm Torx screw in the middle of the base using a Torx TR20 screwdriver.
- Take off the black bottom from the main body.

Step 6



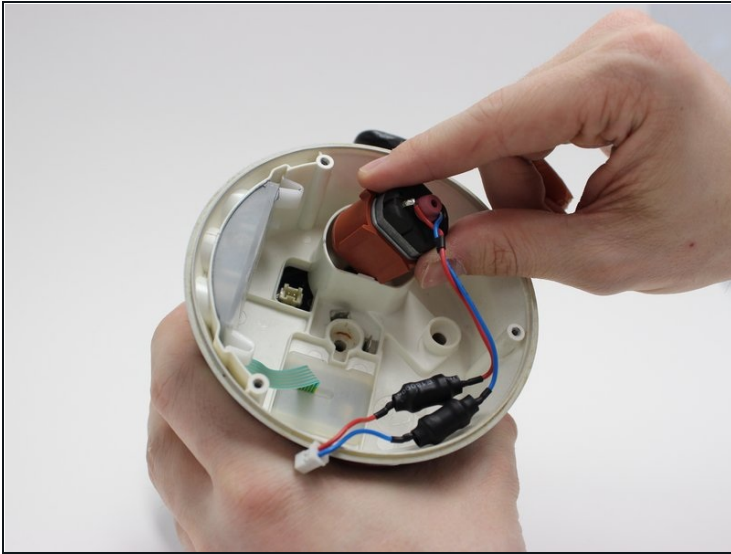
- Grab the power connector in the centre of the black bottom with a monkey wrench.
- Twist the connector clockwise to remove the center power socket.

Step 7



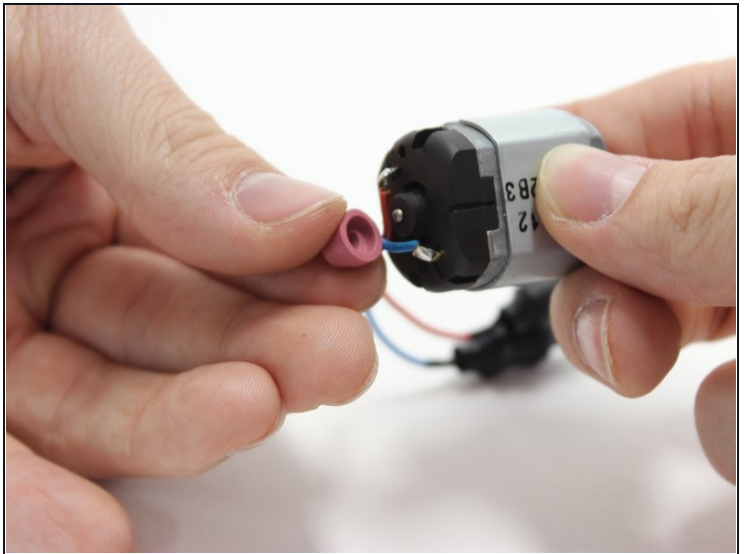
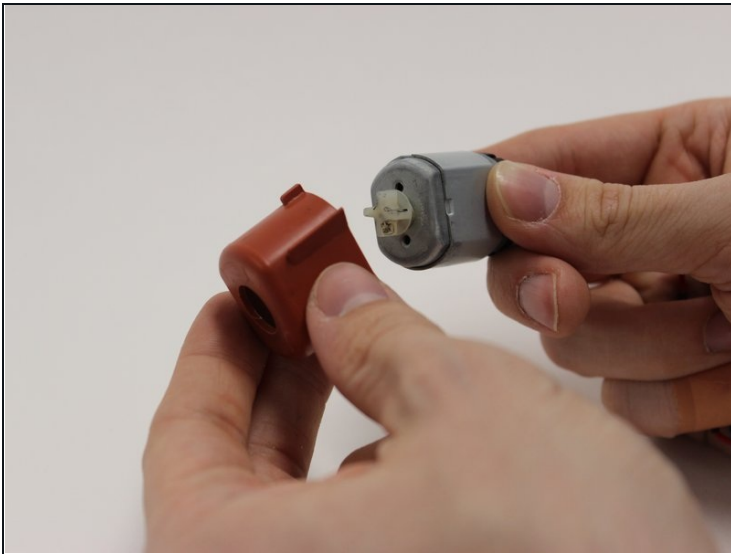
- Remove the electromotor-plug using [tweezers](#).
- Make sure to squeeze the small tab on the side of the plug to release it easily.

Step 8



- Remove the electromotor by hand.

Step 9



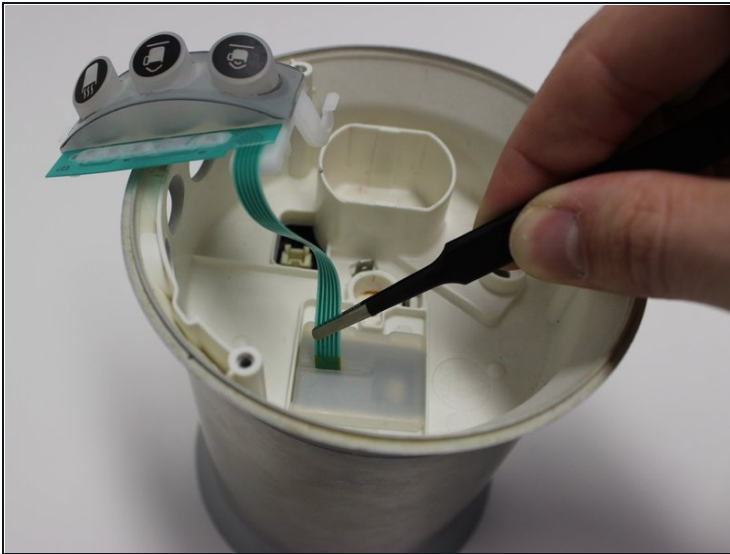
- Remove the rubber housing from the electromotor.
- Remove the small rubber cap from the other end of the electromotor.

Step 10



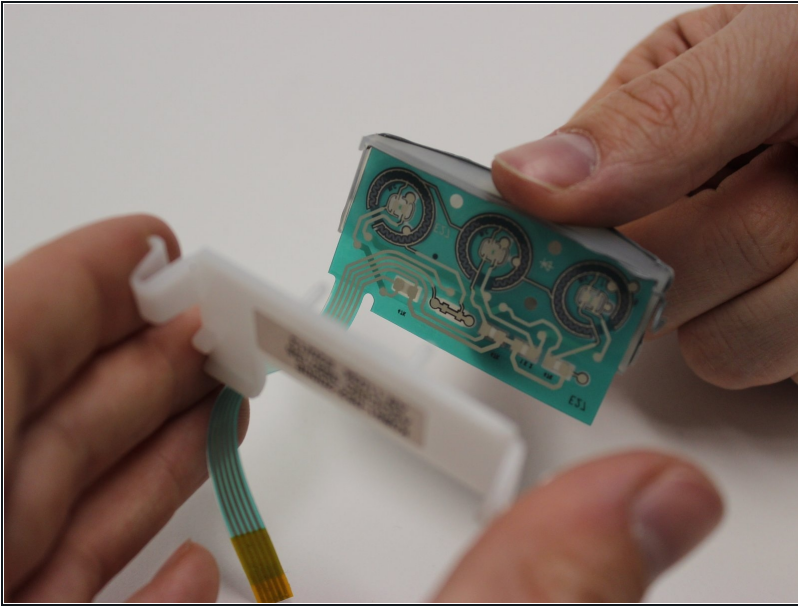
- Press on the two white clips to release the button case.
- ① Push one side out first to make it easier.

Step 11



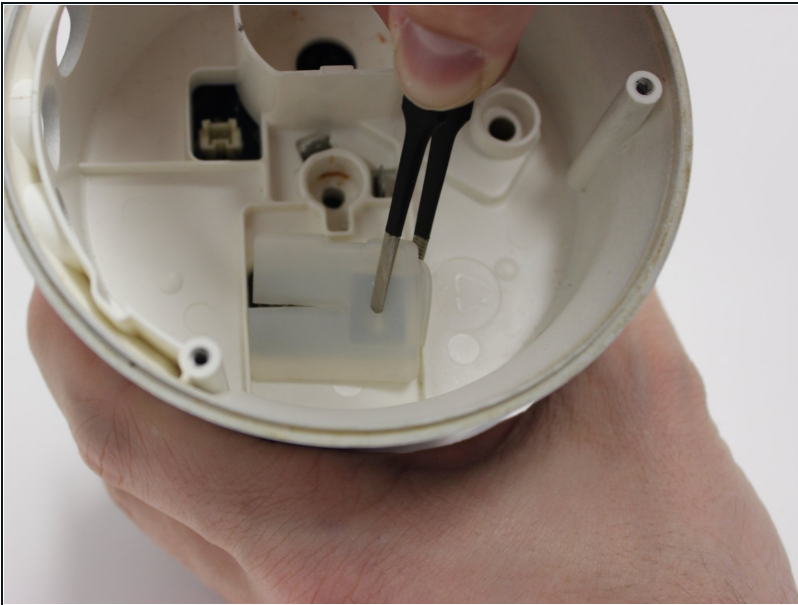
- Pull out the green ribbon cable through the rubber cover.

Step 12



- Pull off the rubber button caps from the button case.

Step 13



- Using tweezers, pull off the rubber cover from the base.
- ① Slide one side of the tweezers under the rubber to get a grip.

Step 14



- Using your thumbs, push off the bottom plastic cover from the body.
- ① Make sure to push and rotate frequently. Pushing on multiple points around the edge of the part allows it to come off easier and without breaking.

⚠ Due to this part being glued in, it takes some force to take it off.

Step 15



- The product is now fully disassembled.

To reassemble your device, follow these instructions in reverse order.