



Panasonic Camera DMC FX37 Battery Door Replacement

This guide is for the replacement of the battery door.

Written By: Zhentao



INTRODUCTION

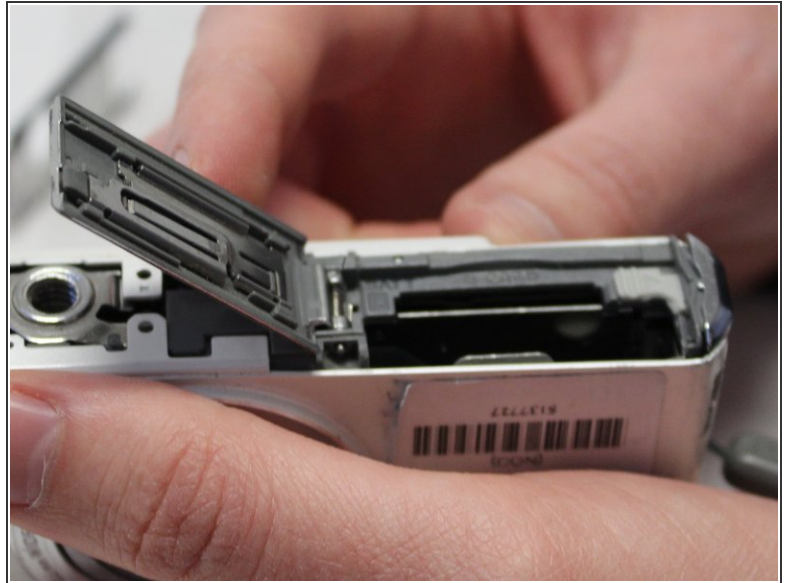
This guide will show you how to replace the door covering the battery compartment. Overall this guide does not take much knowledge regarding disassembly, however you should take care to remember how the parts are situated before removing them.



TOOLS:

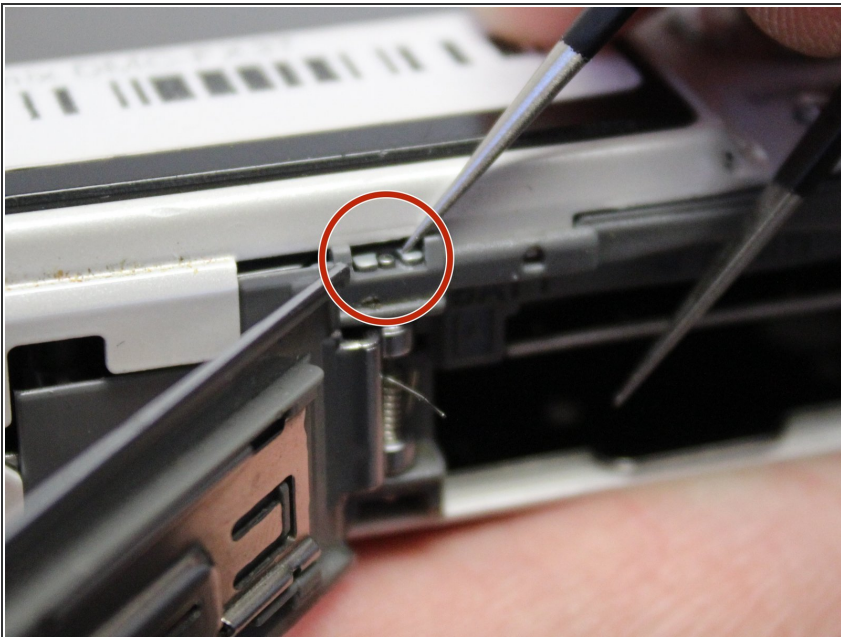
- [Tweezers](#) (1)
-

Step 1 — Battery Door



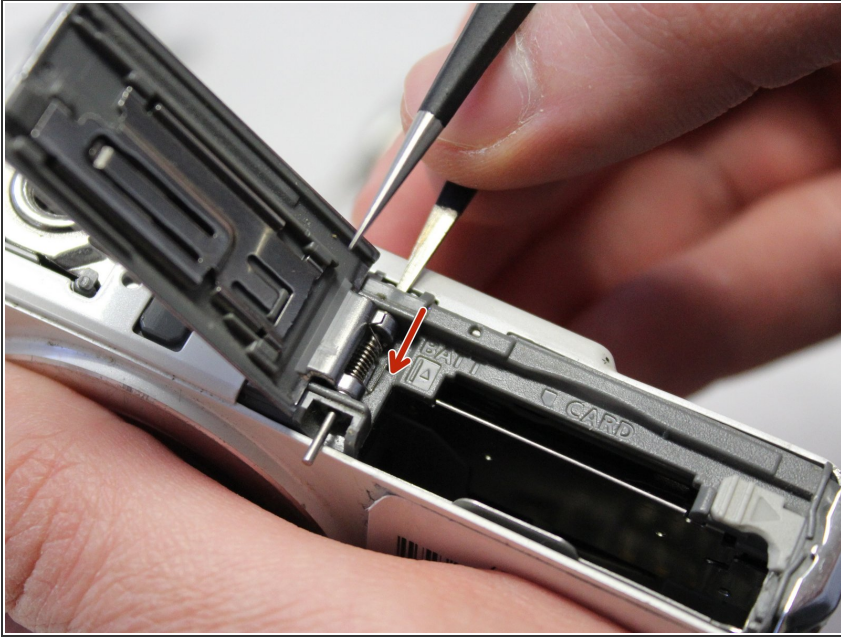
- Set the switch on the battery door to "open," and open the door.

Step 2



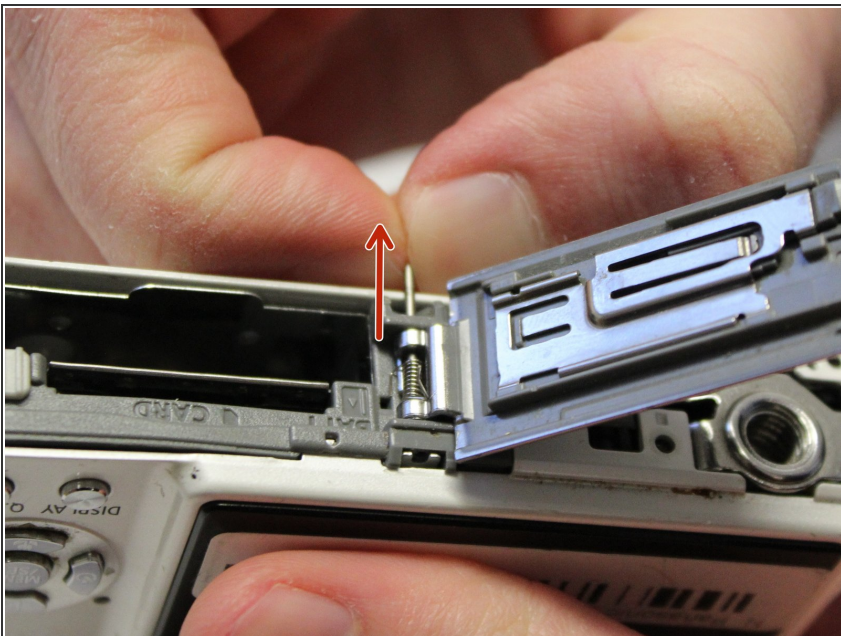
- At the left hand side, locate the head of the metal bar that holds the spring in place.

Step 3



- Push the metal bar down using the metal tweezers.

Step 4



- Pull the metal bar that holds the spring in place out.
- ⓘ You can also use tweezers for this step, although we found it easier to just use our fingers.

Step 5



- Remove the battery access door from the device.
- ⓘ In order to keep the "springiness" of the door, be sure that the long arm of the spring is not over the hole for the battery.

To reassemble your device, follow these instructions in reverse order.