



Sony Vaio VPCCW17FX Keyboard Replacement

This guide will instruct users on how to remove...

Written By: Makaila Howard



INTRODUCTION

This guide will instruct users on how to remove the keyboard from the laptop for repair or replacement purposes.

TOOLS:

- [Phillips #00 Screwdriver](#) (1)
 - [JIS #00 Screwdriver](#) (1)
-

Step 1 — Back case



- Turn the laptop over and orient it as shown.

Step 2



- Remove the battery by pinching the two lock tabs towards the center.
- Next, lift up on the battery to remove it.

Step 3



- Using a Phillips #00 screwdriver, remove the twenty-two 5.6 mm screws from the back of the laptop.
- ⓘ Be sure to remove all screws, including those that are typically covered by the battery.

Step 4



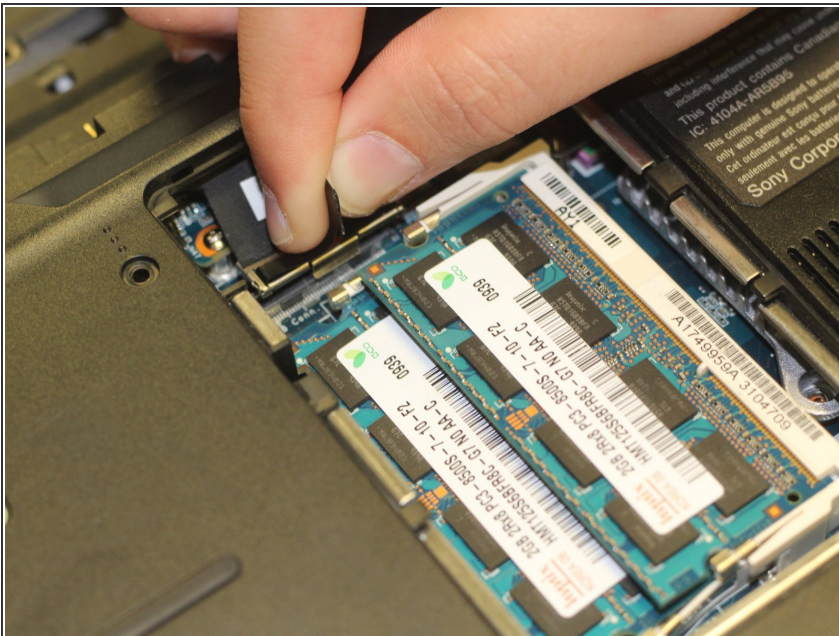
- Now, remove the small covers from the back of the case.
- Using a Phillips #00 screwdriver, unscrew the three 5.6 mm screws from the covers (one screw on the RAM cover [middle] and two screws on the Hard Drive cover [bottom right]).
- Then, lift up on and remove these covers as shown in the third image.

Step 5



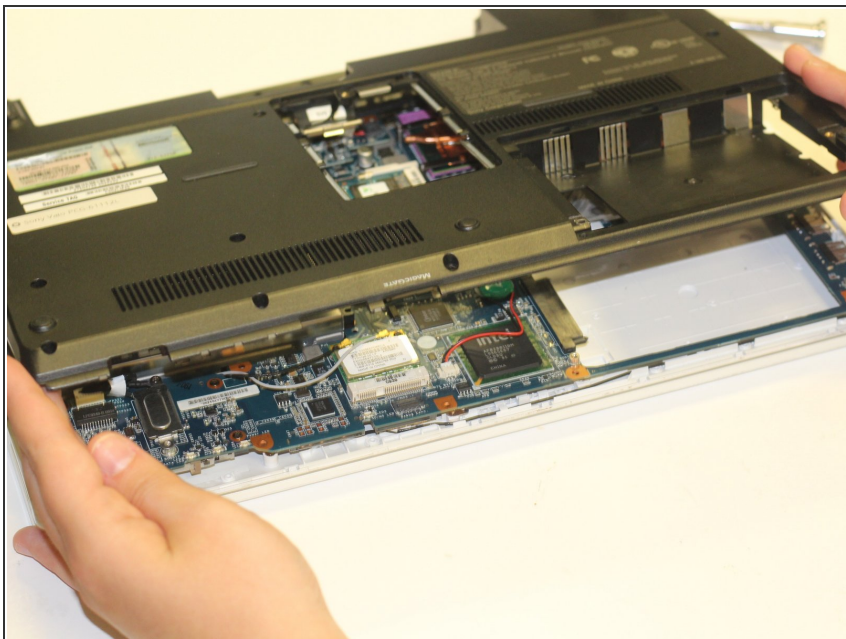
- Remove the hard drive.
 - Using a Phillips #00 screwdriver, unscrew the two remaining 4.9 mm screws holding the hard drive into place.
 - Next, lift up and pull outwards to release the hard drive from its socket.

Step 6



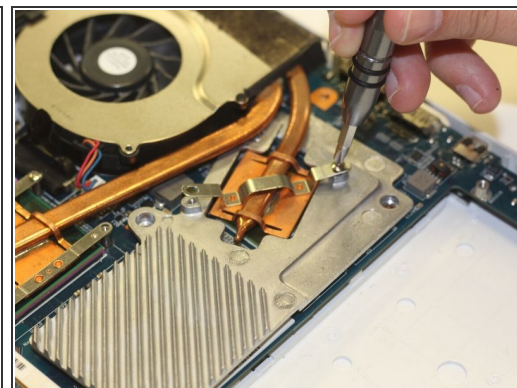
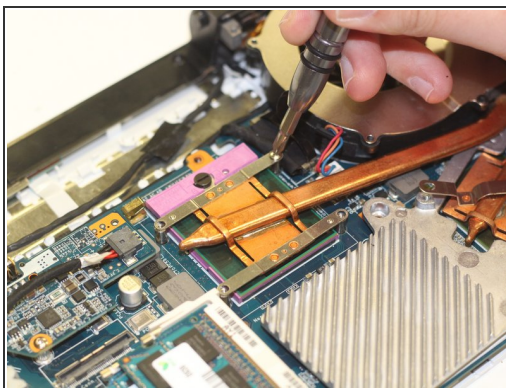
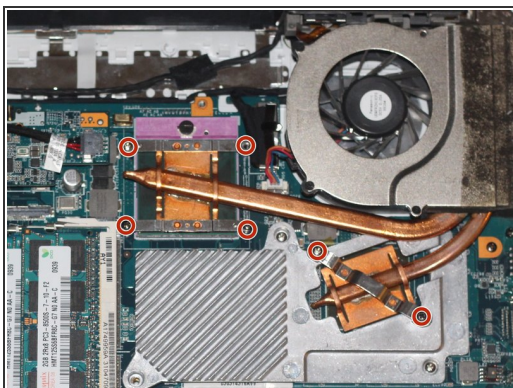
- Using your fingers, grasp the black tab and lightly pull up on the ribbon cable to detach it from the motherboard.

Step 7



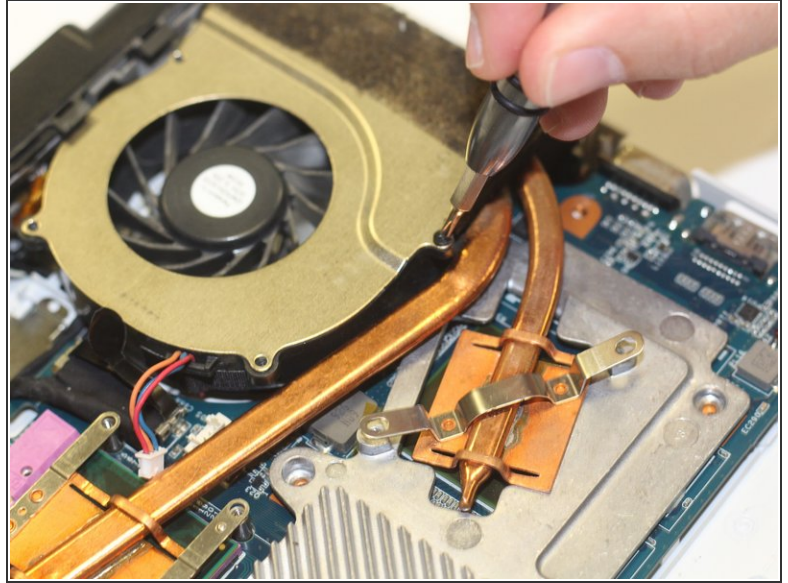
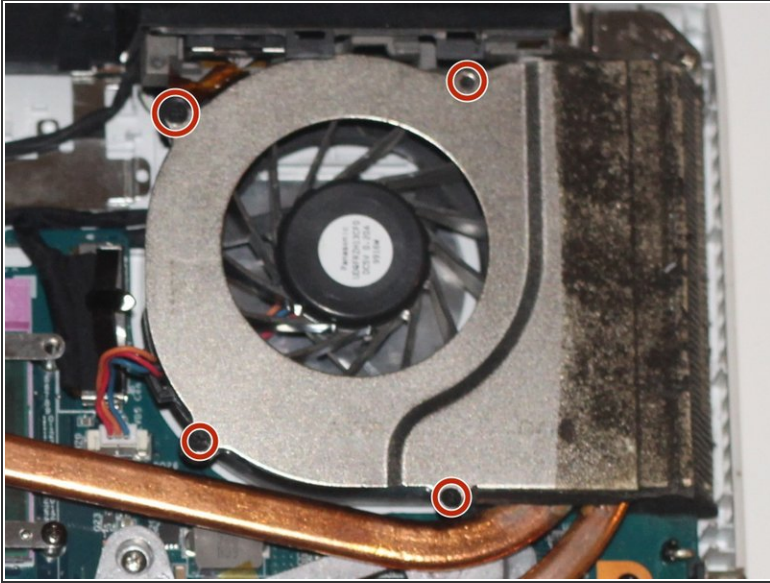
- After proper removal of all necessary screws, gently lift up on the back case to remove it.


Step 8 — Fan



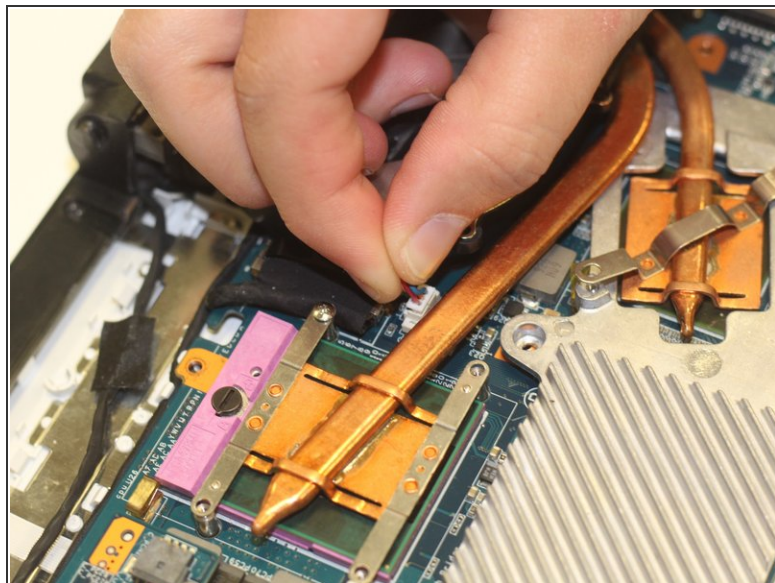
- Locate the fan (top-right corner of the computer).
- Using a Phillips #00 screwdriver, unscrew the six 2.7 mm screws that secure the fan to the motherboard.

Step 9



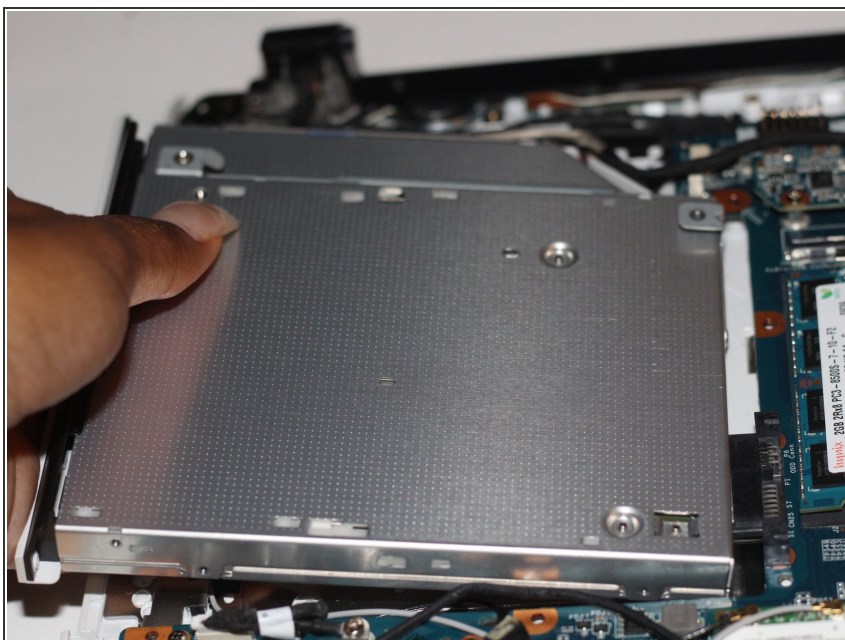
-  This step can be skipped if you are just removing the fan to access another part of the device (such as the motherboard).
- Using a Japanese Industrial Standard #00 screwdriver, unscrew four 3.7 mm screws located on the casing of the fan.

Step 10



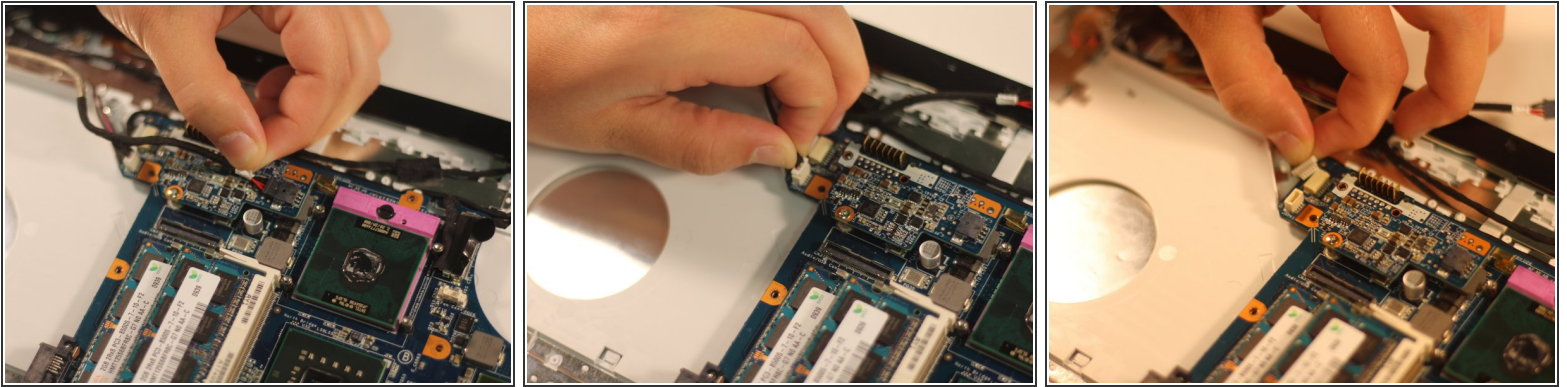
- Using your fingers, grasp the white tab and firmly, yet gently, pull up on the wire to disconnect it from the motherboard.

Step 11 — Motherboard



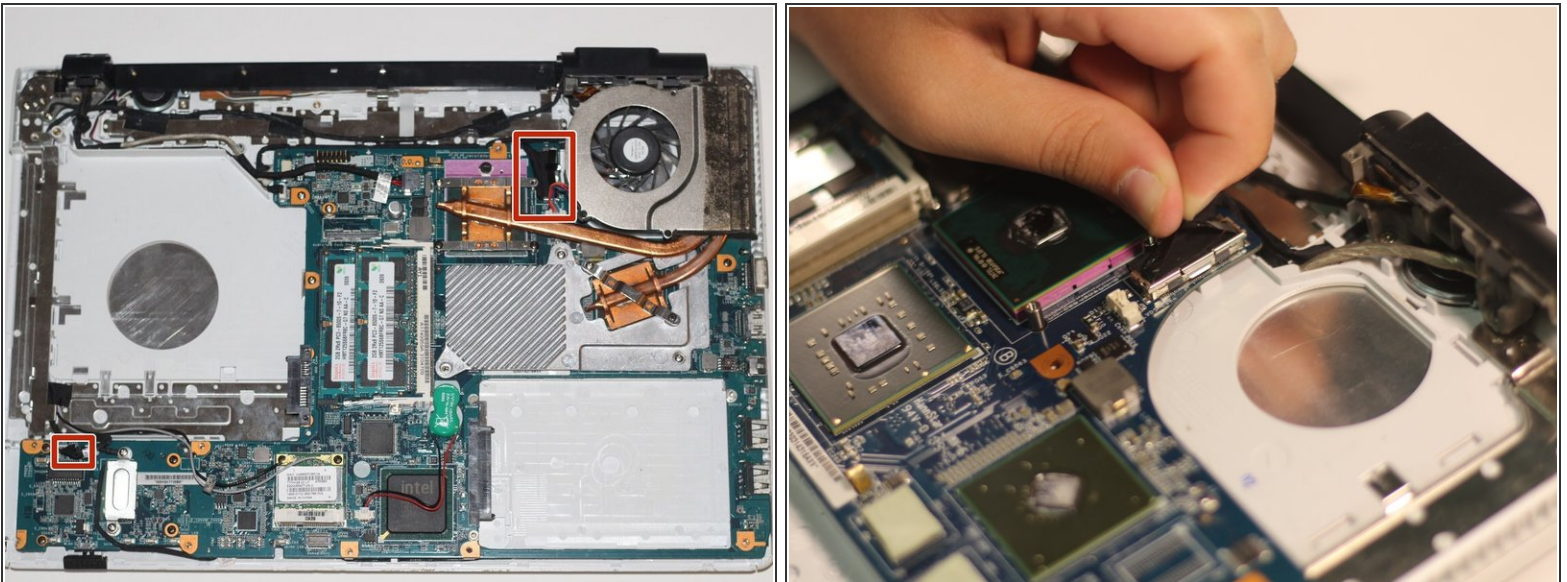
- With your hand, grasp the side of the DVD/CD drive and gently pull it out of the socket, disconnecting it from the motherboard.

Step 12



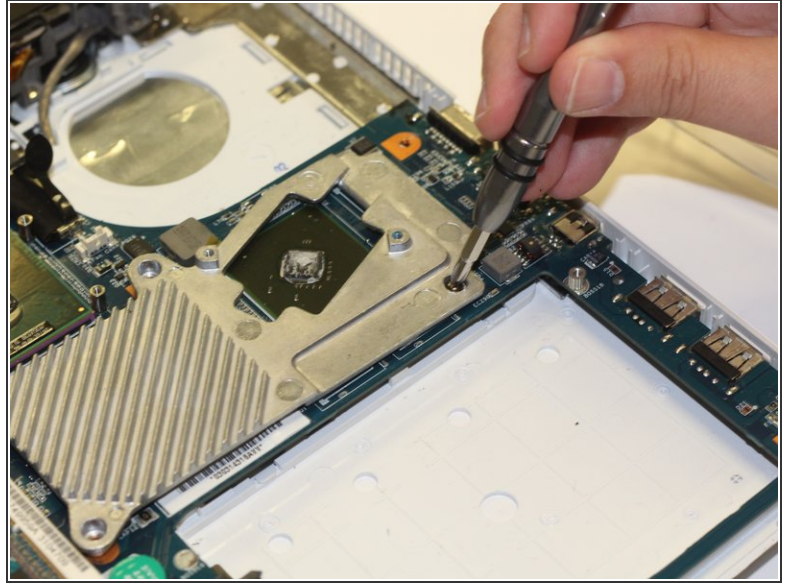
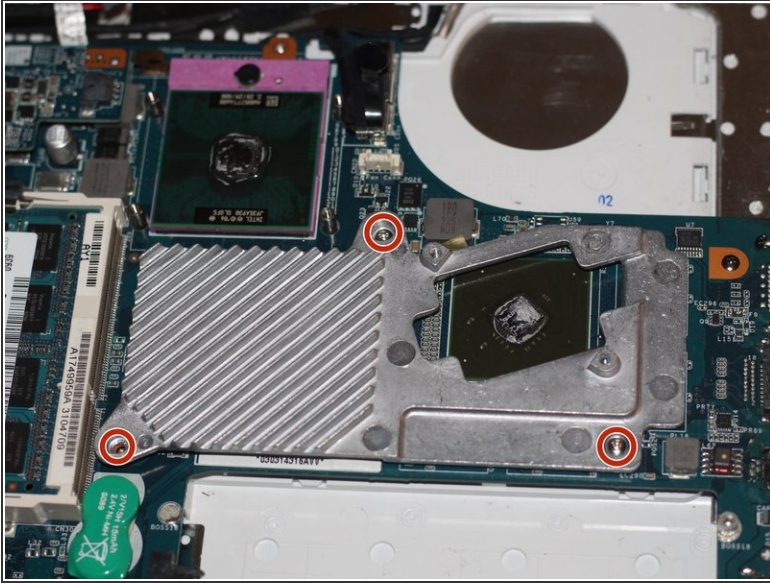
- Using your fingers, grasp the three ribbon cable attachments (pictured) and gently pull on them to disconnect them from the motherboard.

Step 13



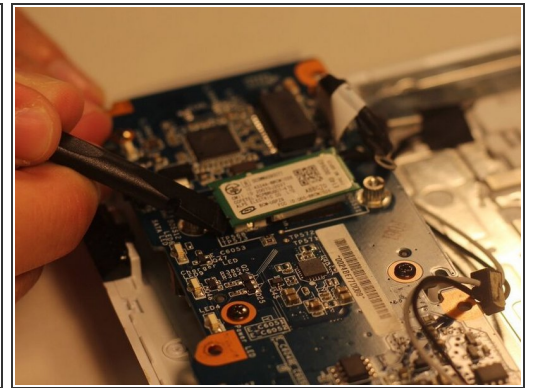
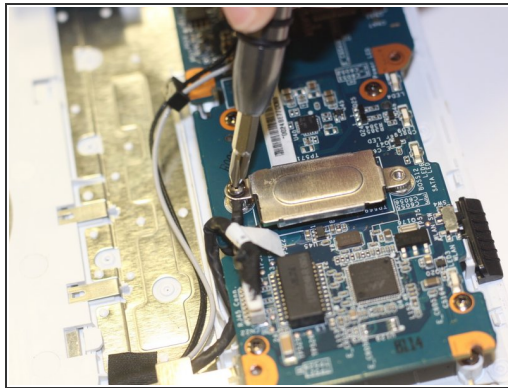
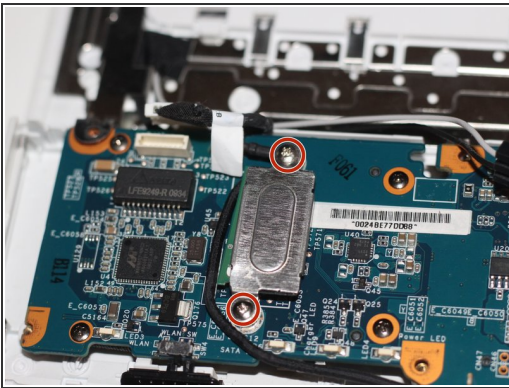
- Repeat the previous step for the two remaining ribbon cables (one is located by the fan, while the other is located by the CD/DVD drive).
- ⓘ For the ribbon cable located near the fan, use your fingers to grasp the black tab and gently, yet firmly, pull up on the cable to detach it from the motherboard.

Step 14



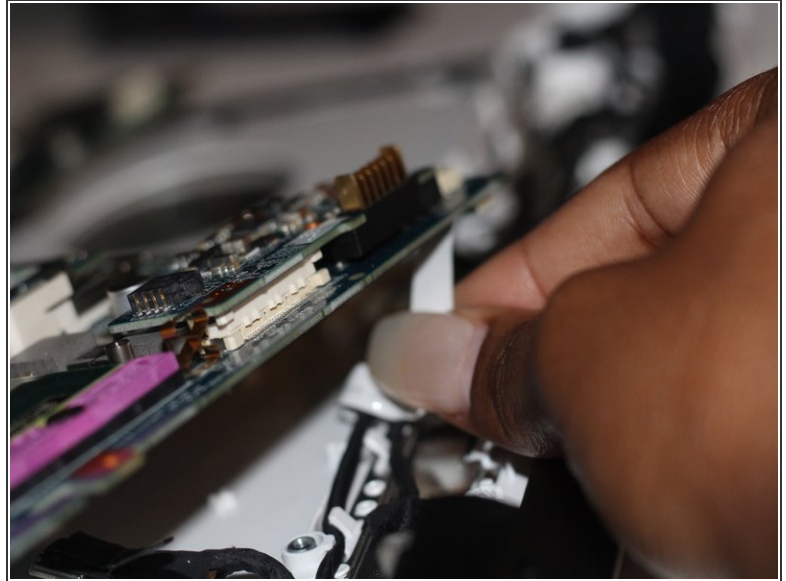
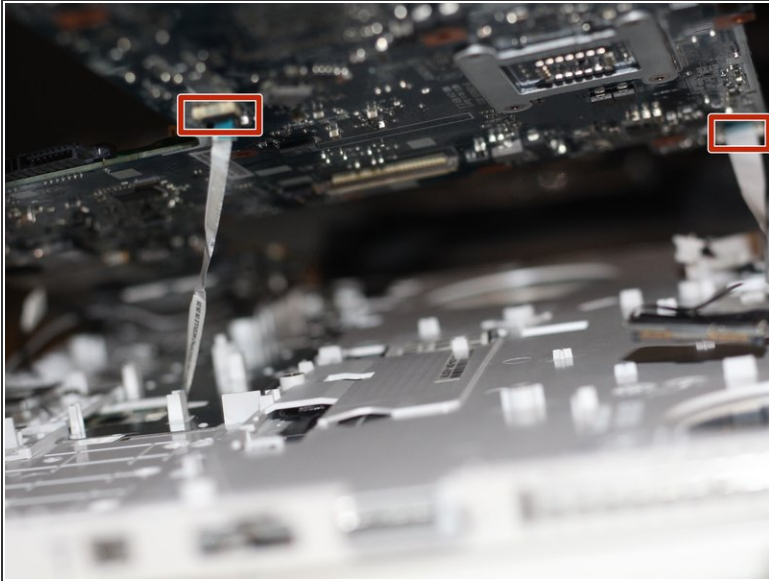
- Using the Phillips #00 screwdriver, remove the three 4.9 mm screws depicted here.
- Next, using your fingers, lift up on this metal piece and remove it from the motherboard.

Step 15



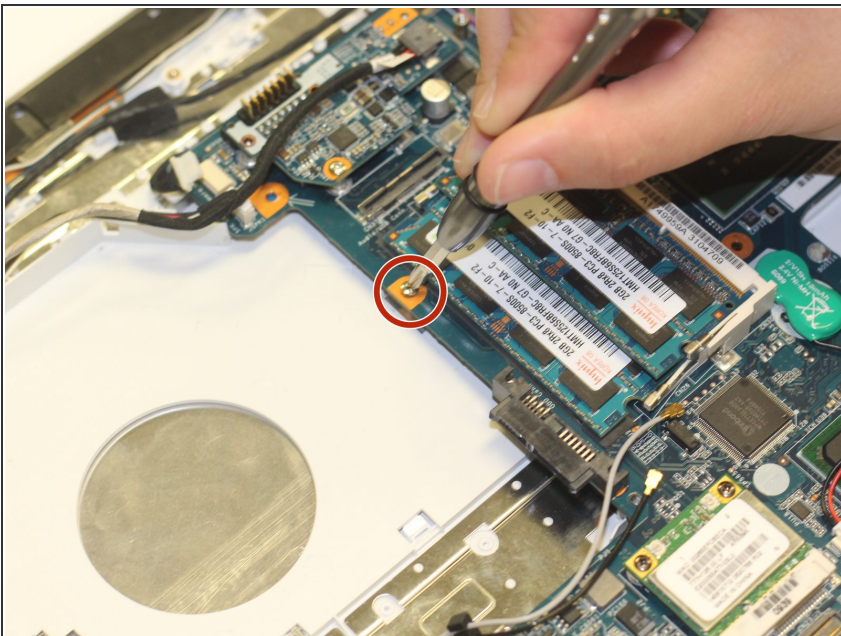
- Using the Phillips #00 screwdriver, unscrew the two 4.9 mm screws depicted here.
- Next, remove the metal cover to expose the bluetooth card.
- Gently fit the flat end of a spudger under the edge of the bluetooth card. Then, lightly pry up on this edge to release the card from the motherboard. (Refer to the third image)

Step 16



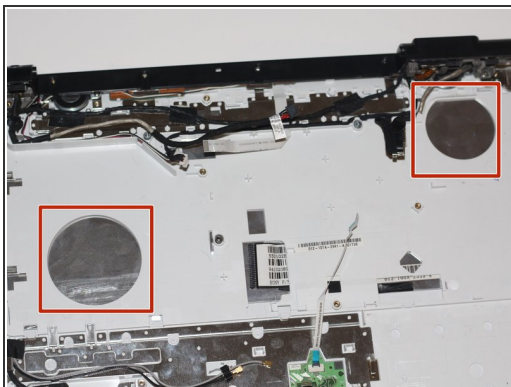
- Gently lift up on the now free motherboard.
- Detach the two ribbon cables that connect the motherboard to the keyboard. To do this, use your fingers to gently pull on the cables until they disconnect.

Step 17 — Keyboard



- Using the Phillips #00 screwdriver, remove the one 3.7 mm screw that secures the keyboard to the laptop.
- ⓘ It is possible that you already removed this screw while removing the other motherboard screws. If this is the case, proceed to the next steps.

Step 18



- Using your hand, gently apply pressure to the bottom of the keyboard via the two silver openings in the computer frame.
- This will release the keyboard from the computer.

To reassemble your device, follow these instructions in reverse order.