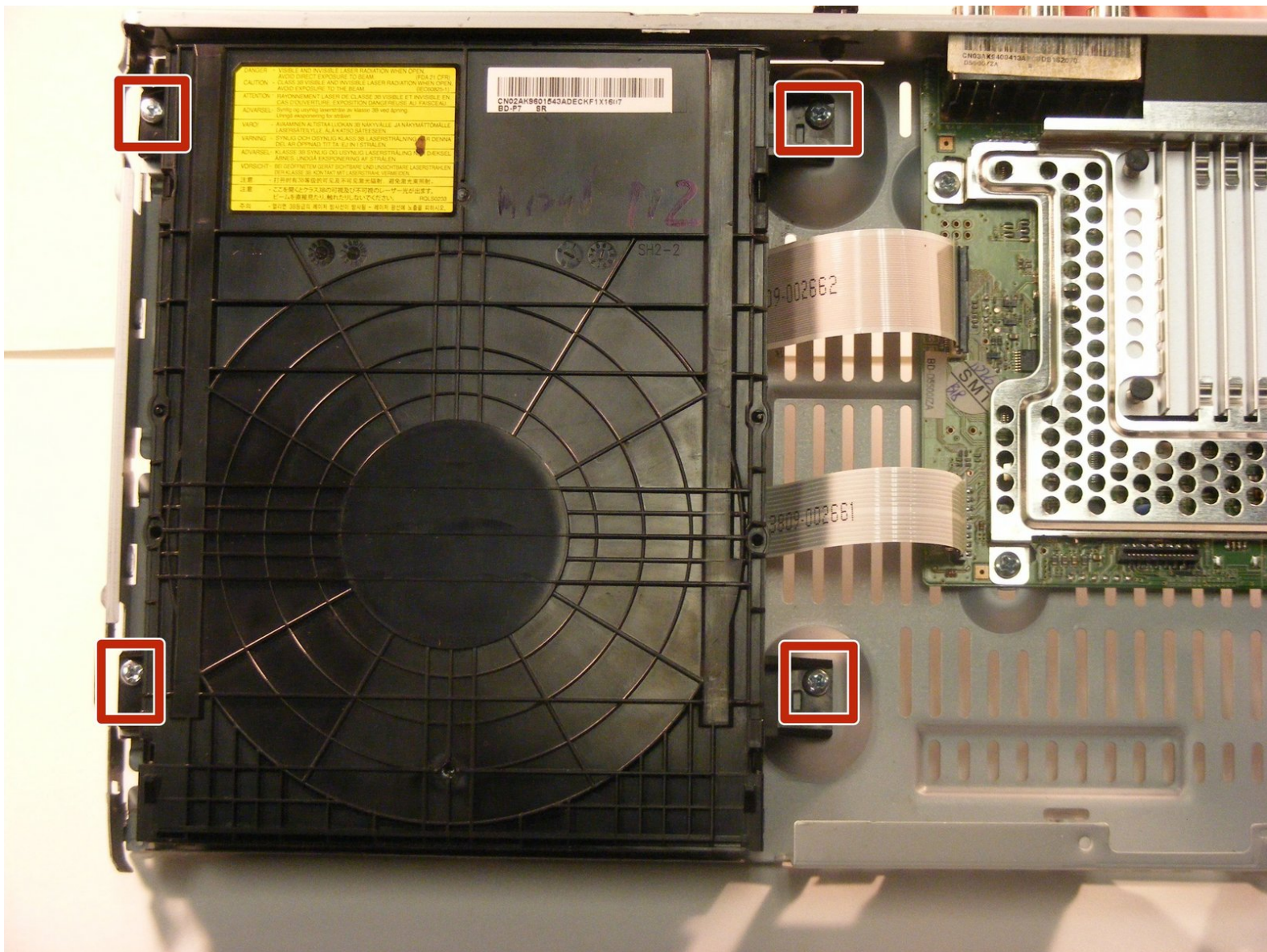




Samsung BD-D5500 Disc Tray Replacement

This guide will successfully show you how to replace the disc tray of the Samsung BD-D5500.

Written By: Brandon Nelson



INTRODUCTION

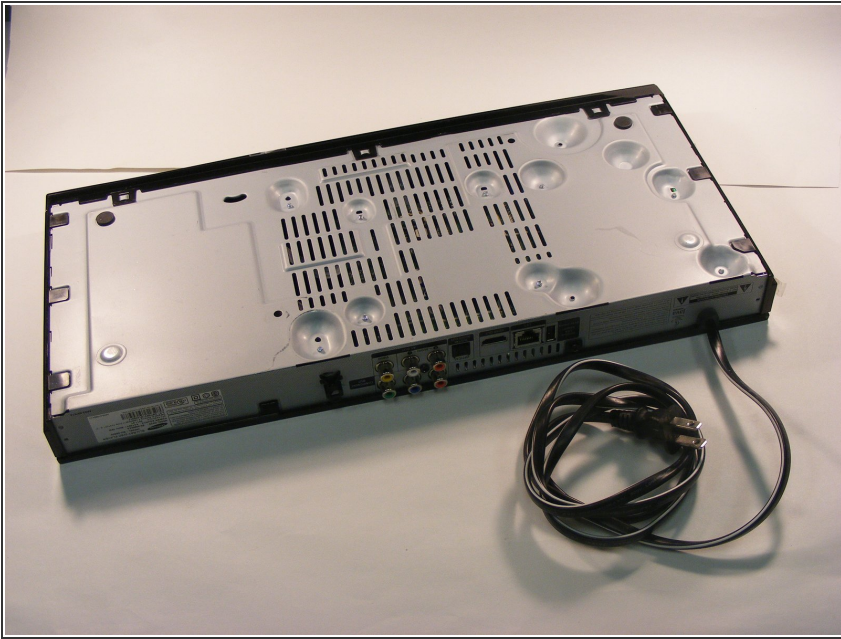
This is a replacement guide for the Samsung BD-D5500 Blu-ray player. This guide will personally give you the information you need to replace the disc tray of the device. This is a very easy and simple process.



TOOLS:

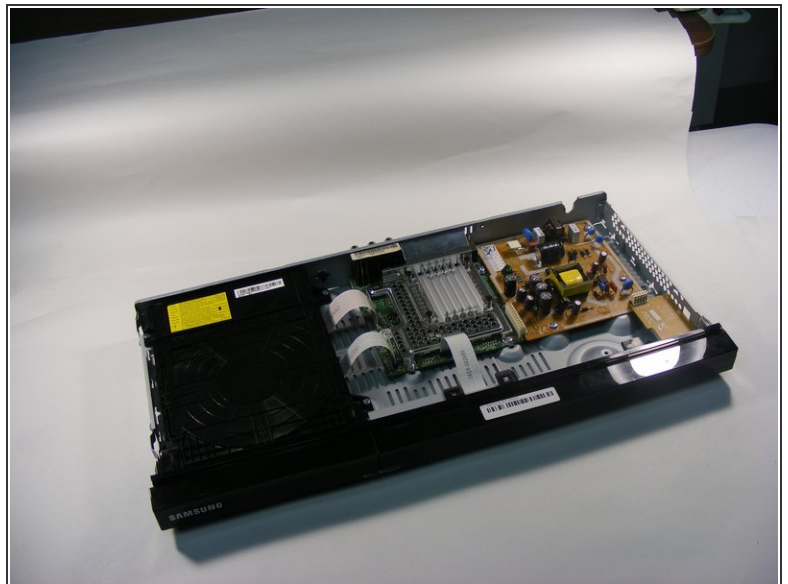
- [iFixit Opening Tool](#) (1)
 - [Phillips #2 Screwdriver](#) (1)
-

Step 1 — Samsung BD-D5500 Disassembly



- To begin, turn the device over so that the bottom is facing up. There are 9 black clips that attach the plastic body to the case. Remove these clips from the case.

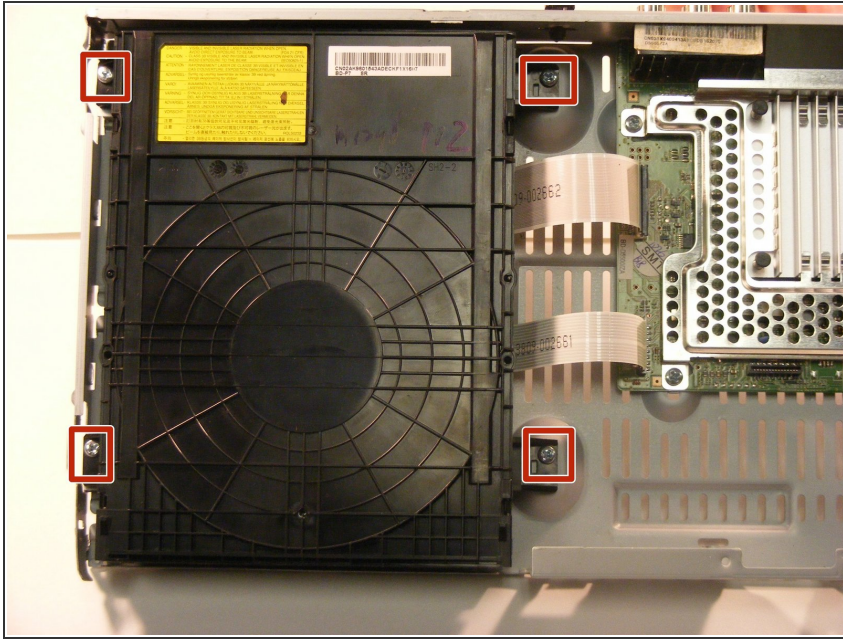
Step 2



- Use a Phillips #2 screwdriver to remove the screw that attaches the top cover to the rear of the device. This will allow you to remove the cover.

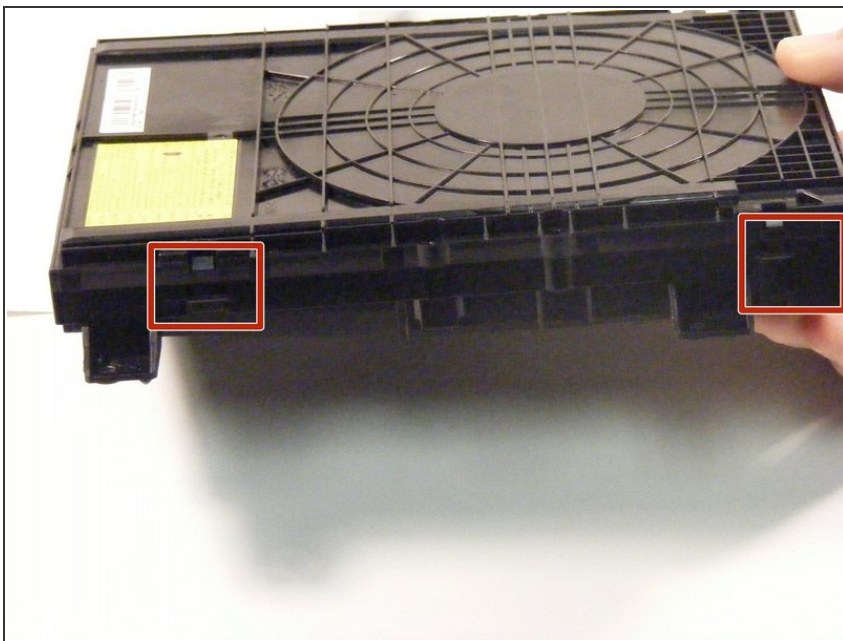
 This is how your device will look after you remove the top.

Step 3 — Disc Tray



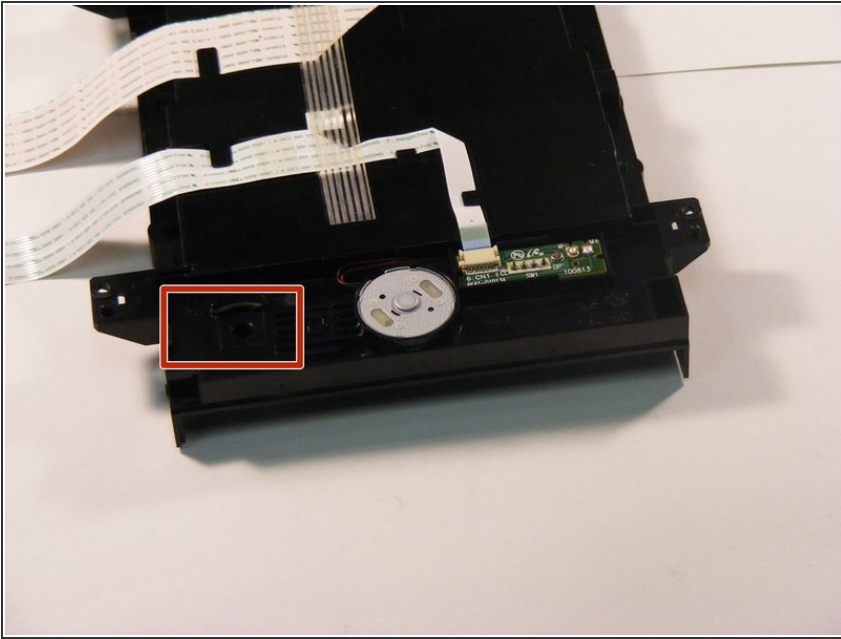
- To remove the disc hub all you have to do is remove the 4 screws holding it down.

Step 4



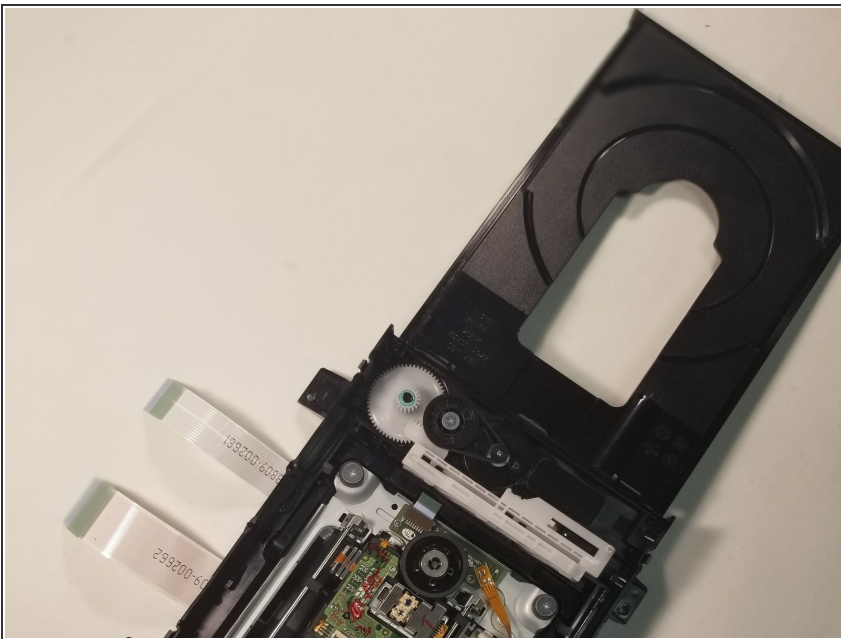
- To replace the disc tray open the disk hub and unsnap the sides of the device.

Step 5



- Locate the slider that reads open and close.
- To open the disc tray slide it to the side that says open.

Step 6



- Return it face up and the disc tray will slide out.

To reassemble your device, follow these instructions in reverse order.