



Nikon D7100 Dial mode button Replacement

The purpose of this guide is to walk through how to replace the dial mode button on the Nikon D7100 DSLR Camera.

Written By: Wesley Eveld



INTRODUCTION

If your Nikon D71000 Dial Mode Button does not switch the camera mode when twisted, use this guide to replace the Dial Mode Button.

No special skills are required to be able to perform this replacement.

Before beginning with this guide, make sure that the device is turned off and disconnected from any external source.



TOOLS:

- [Phillips #0 Screwdriver](#) (1)
-

Step 1 — LCD Screen



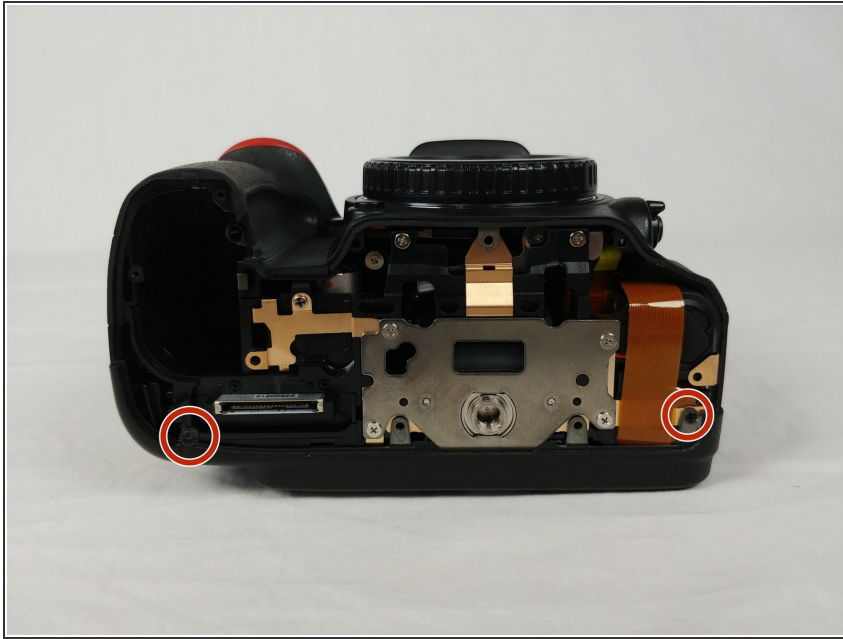
- Remove the five screws on the bottom of the camera with a JIS #000 head screwdriver.

Step 2



- Remove the 3 screws under the battery flap and remove the bottom cover.

Step 3



- Remove the 2 screws inside the camera on the back corners.

Step 4



- Open the HDMI flap and remove the 2 screws.

Step 5



- Remove the screw next to the camera strap loop.

Step 6



- Remove the 2 screws on each side of the view finder.

Step 7



- Remove the 2 screws above and below the SD card flap.

Step 8



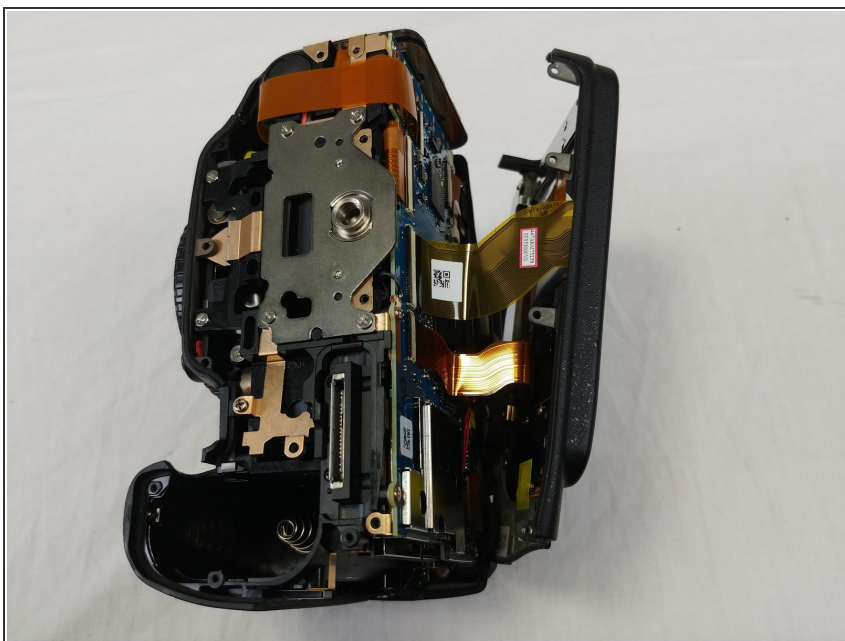
- Peel off the adhesive leather screw cover and remove the 2 screws under it.

Step 9



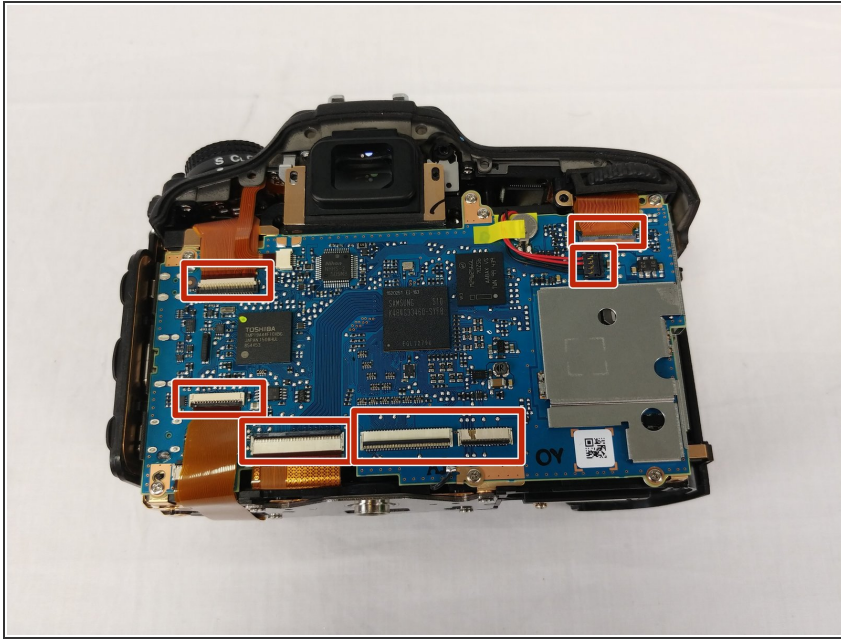
- Remove the Diopter adjustment control sticker and remove the screw under it.

Step 10



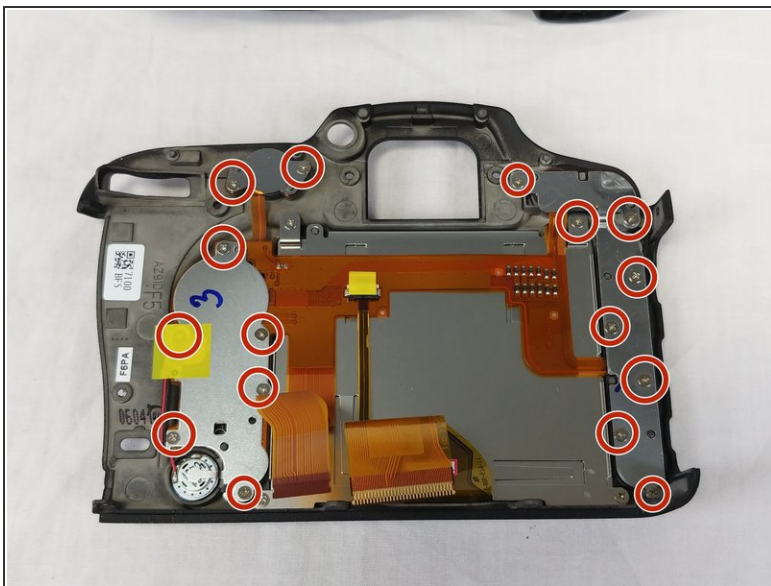
- Separate the back panel of the camera from the actual camera.
- ⚠ Be careful not to tear any of the ribbon cables.

Step 11



- Disconnect the LCD ribbon cables and power cable from the motherboard.

Step 12



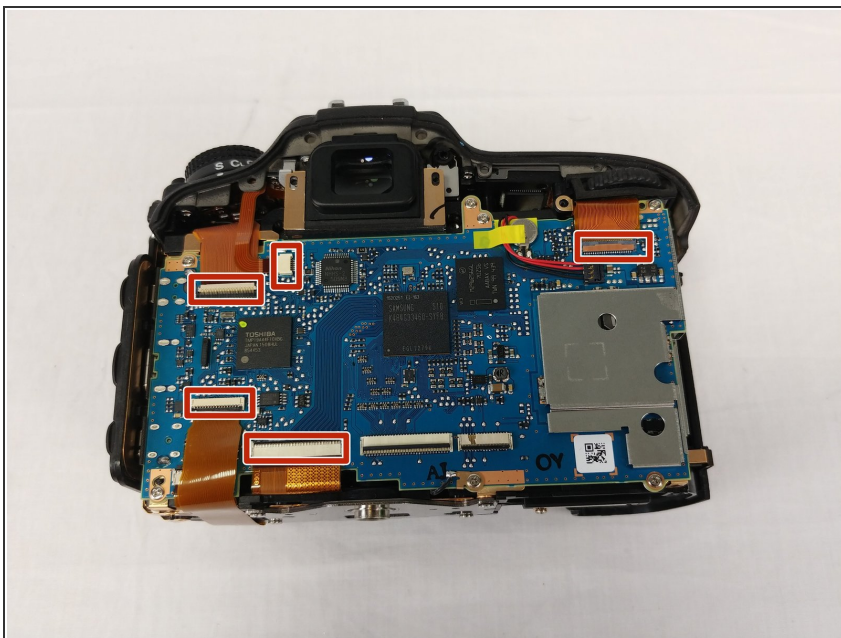
- Unscrew all 16 screws around the back plate of the camera.

Step 13



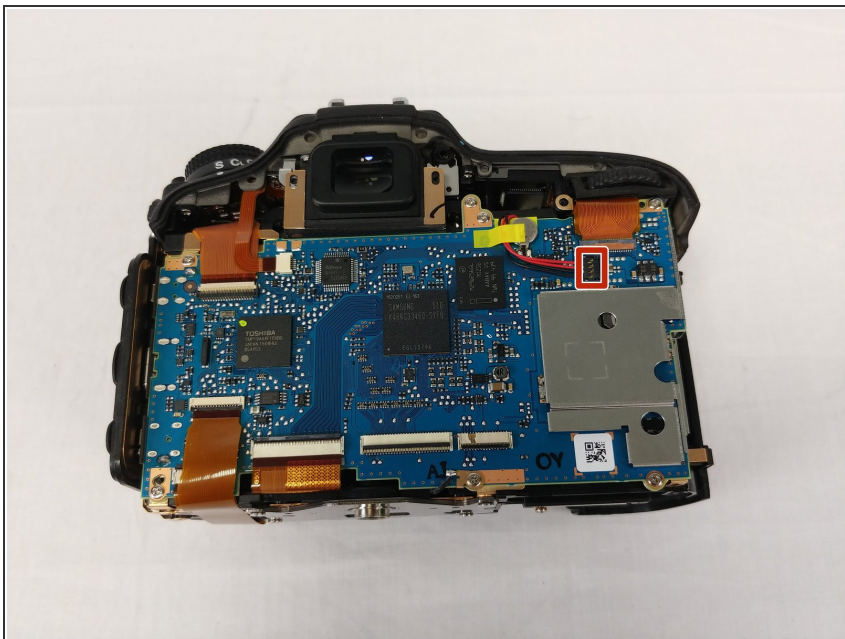
- Then unscrew the remaining screws holding the back plate to the LCD.
- Then simply remove the plate with the LCD.

Step 14 — Motherboard



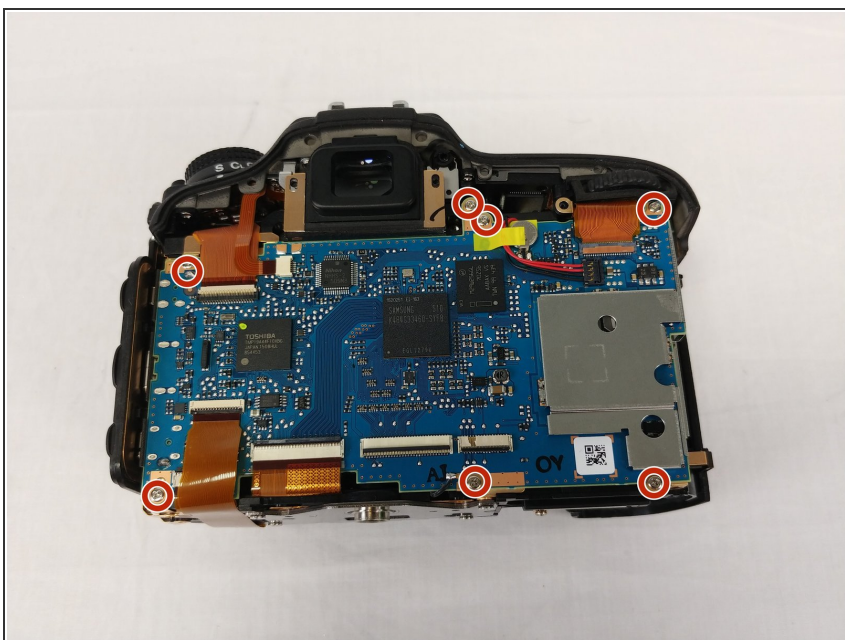
- Undo the 5 ribbon cable connectors by flipping the latches up with a plastic spudger.

Step 15



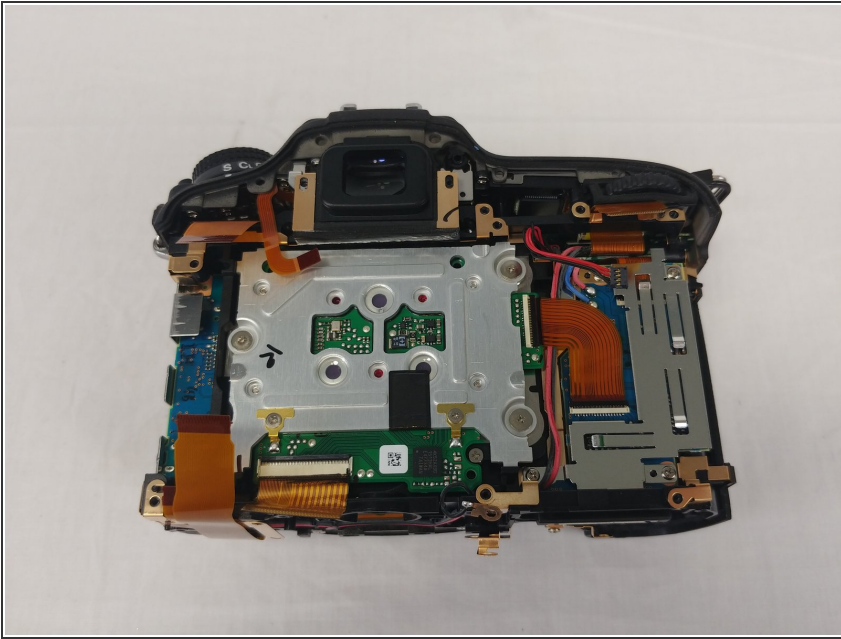
- Remove the black 4 pin connector by pulling it out of the connector.

Step 16



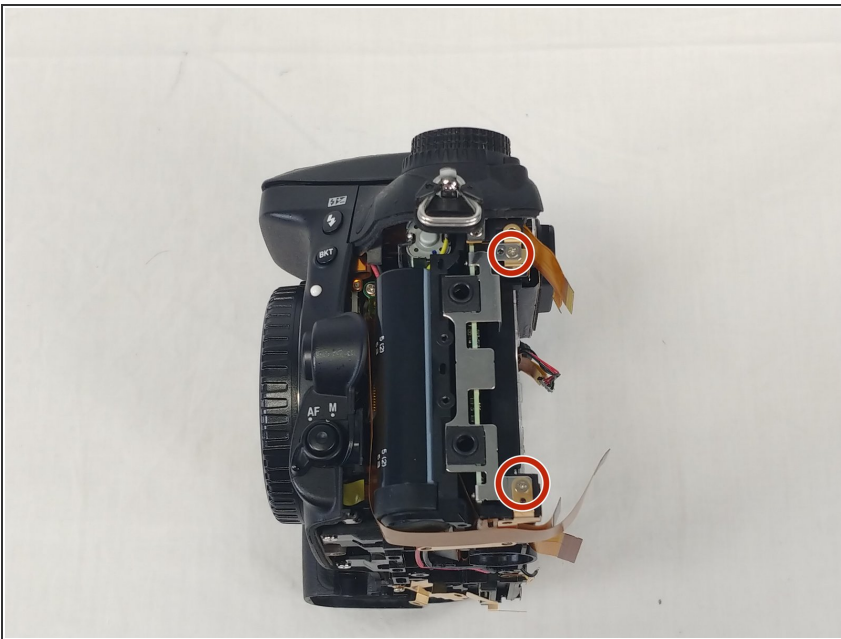
- Remove the 7 screws holding the motherboard in place.

Step 17



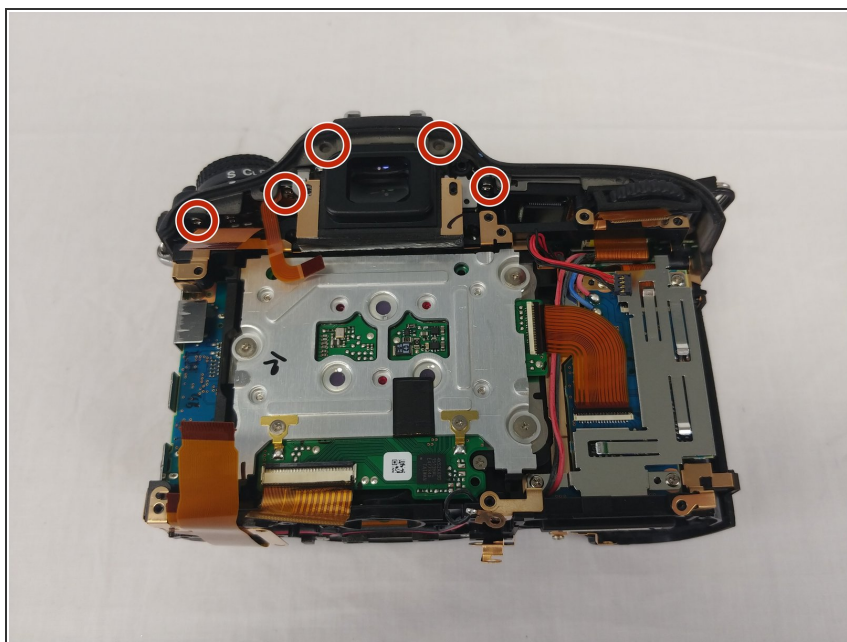
- This is what you should see after removing the motherboard.

Step 18 — Headphone and Microphone Module



- After following the guide to remove the back LCD screen from the motherboard, remove the 2 marked screws.

Step 19 — Dial Mode Button



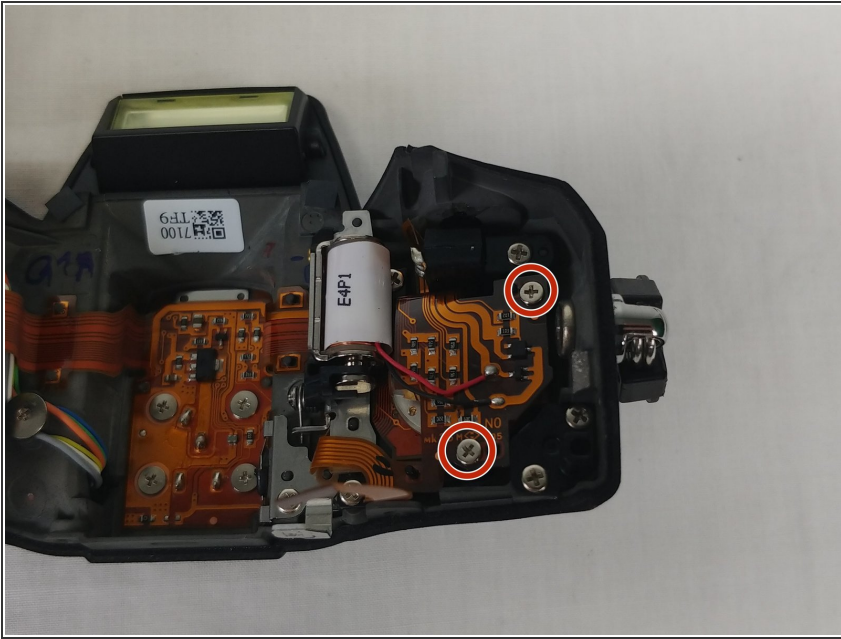
- Remove these 5 screws along the top of camera body.

Step 20



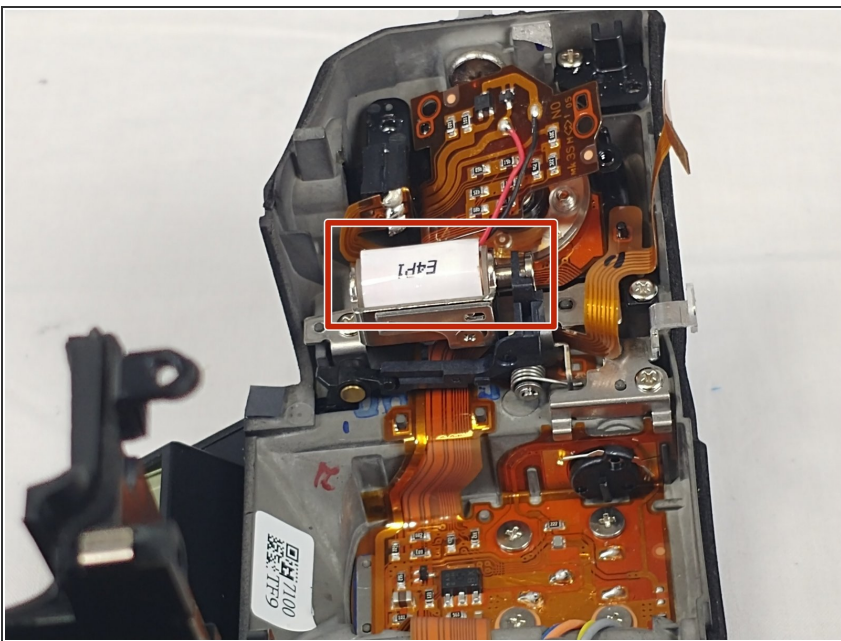
- Remove these 2 screws on the top of the camera and pull the top screen, flash, and dial-mode button from the main body of the camera.

Step 21



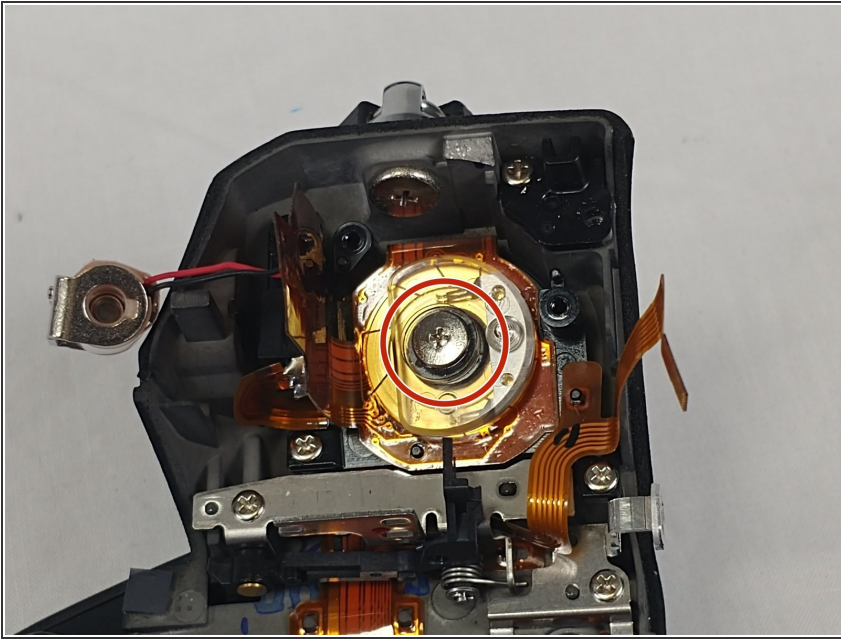
- Remove the screws holding the dial-mode PCB board down.

Step 22



- Remove the potentiometer and PCB off together.

Step 23



- Remove the large screw in the middle of the dial-mode button. This allows you to replace it.

To reassemble your device, follow these instructions in reverse order.