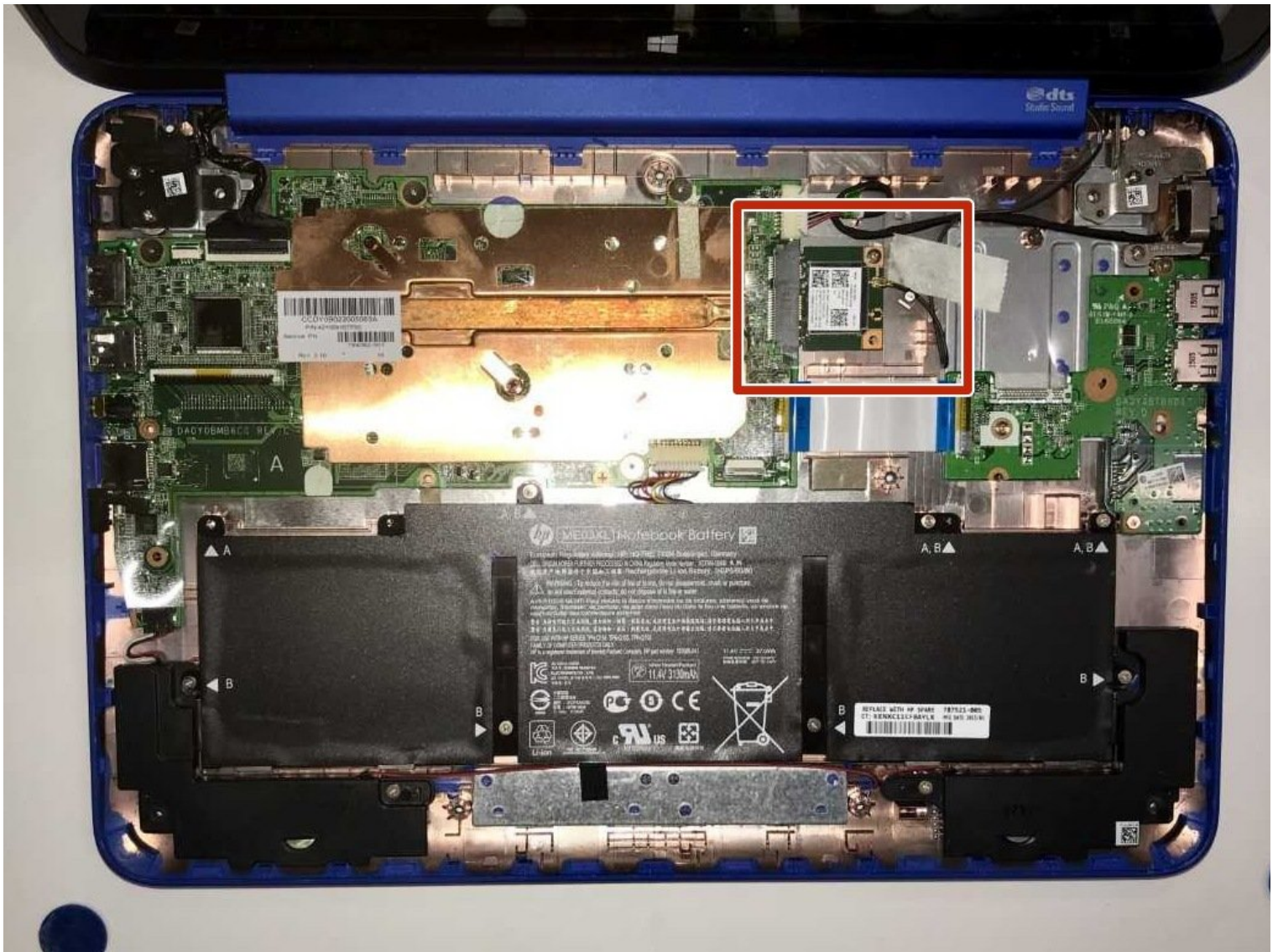




HP Stream 13-c002dx Wireless Card Replacement

This guide covers the accessing and replacing...

Written By: Hailee McCraw



INTRODUCTION

This guide covers the accessing and replacing of the wireless card in an HP Stream 13-c002dx.

TOOLS:

Phillips #0 Screwdriver (1)

6-in-1 Screwdriver (1)



Metal Spudger (1)

PARTS:

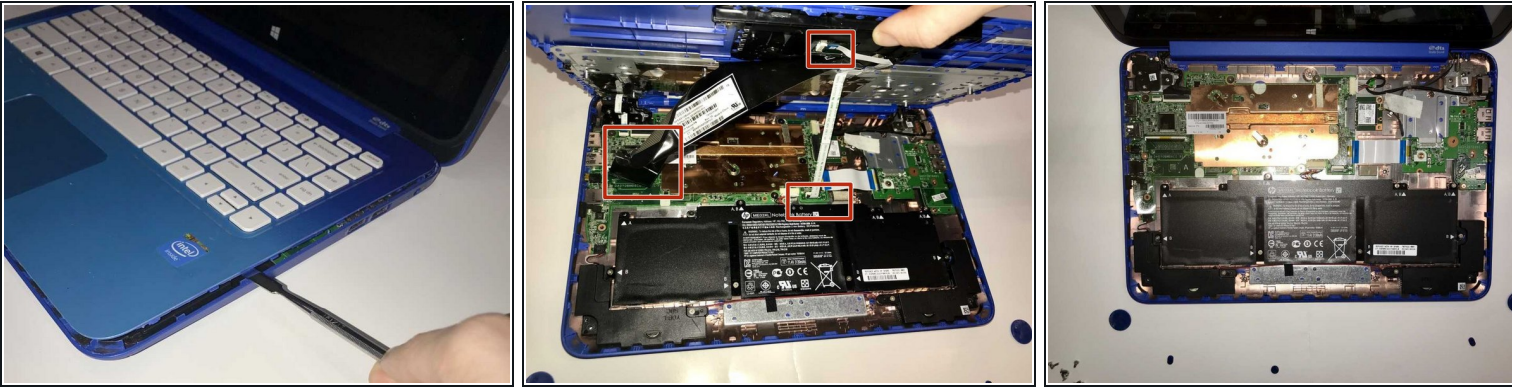
HP Stream 13-c002dx Wifi Chip (1)

Step 1 — Keyboard



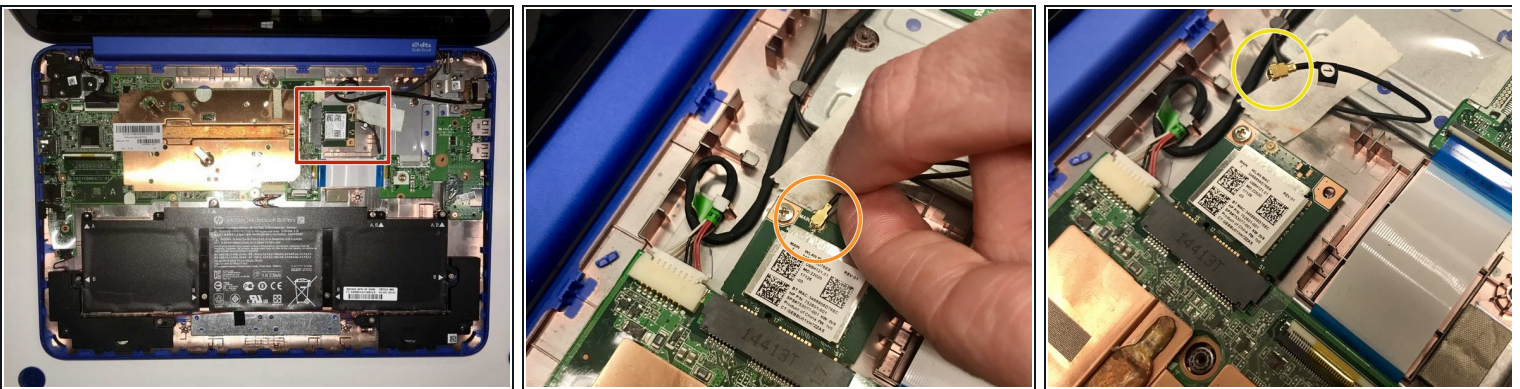
-  Begin by placing your laptop on a clean surface such as a table and away from any liquids which may spill and damage components.
- Flip the laptop over so the bottom is facing up.
- Use your Phillips #0 screwdriver to remove the eleven visible 5 mm screws on the back of the laptop.
-  There are some screws underneath the rubber feet. Use a spudger to remove them and gain access.
- Unscrew the two remaining 2.5mm screws. Keep these screws separate from the first eleven 5mm screws.

Step 2



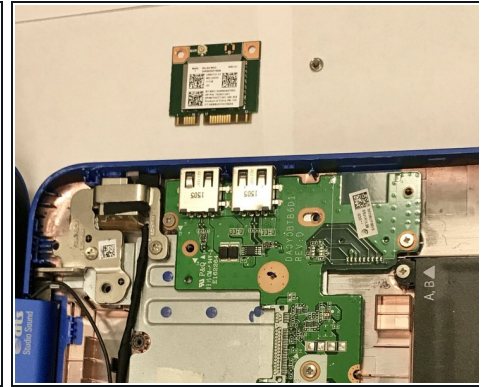
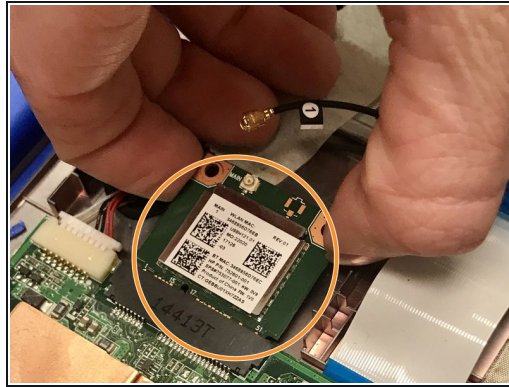
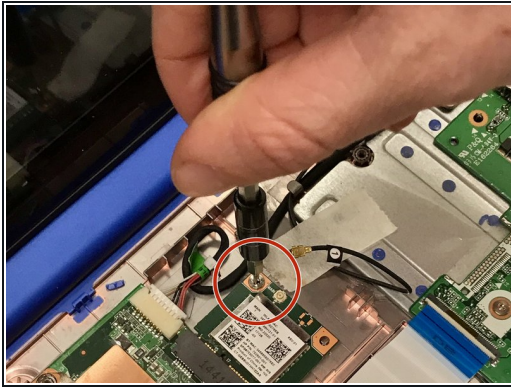
- ❗ Flip the laptop back over so it's right side up and open the screen.
- Using a spudger, separate the keyboard surface from the bottom of the laptop.
- While lifting the keyboard surface from the bottom, you will notice three cables still attaching them together. Gently unplug each of these cables from the motherboard.
- Remove the keyboard assembly.

Step 3 — Wireless Card



- Inside the laptop you will notice the wireless card located in the upper middle. This will be what you are replacing.
- Attached to the Wi-Fi card is a black wire that must be removed. Using your hand, lift gently on the wire as close as you can to where it connects to the Wi-Fi card.
- Once the wire is removed, set it aside so it does not get damaged.

Step 4



- Remove the screw holding the wireless card in place.
- With the screw removed, gently pull back the Wi-Fi card and then lift it out of the laptop. You are now ready to insert the new wireless card.

To reassemble your device, follow these instructions in reverse order.