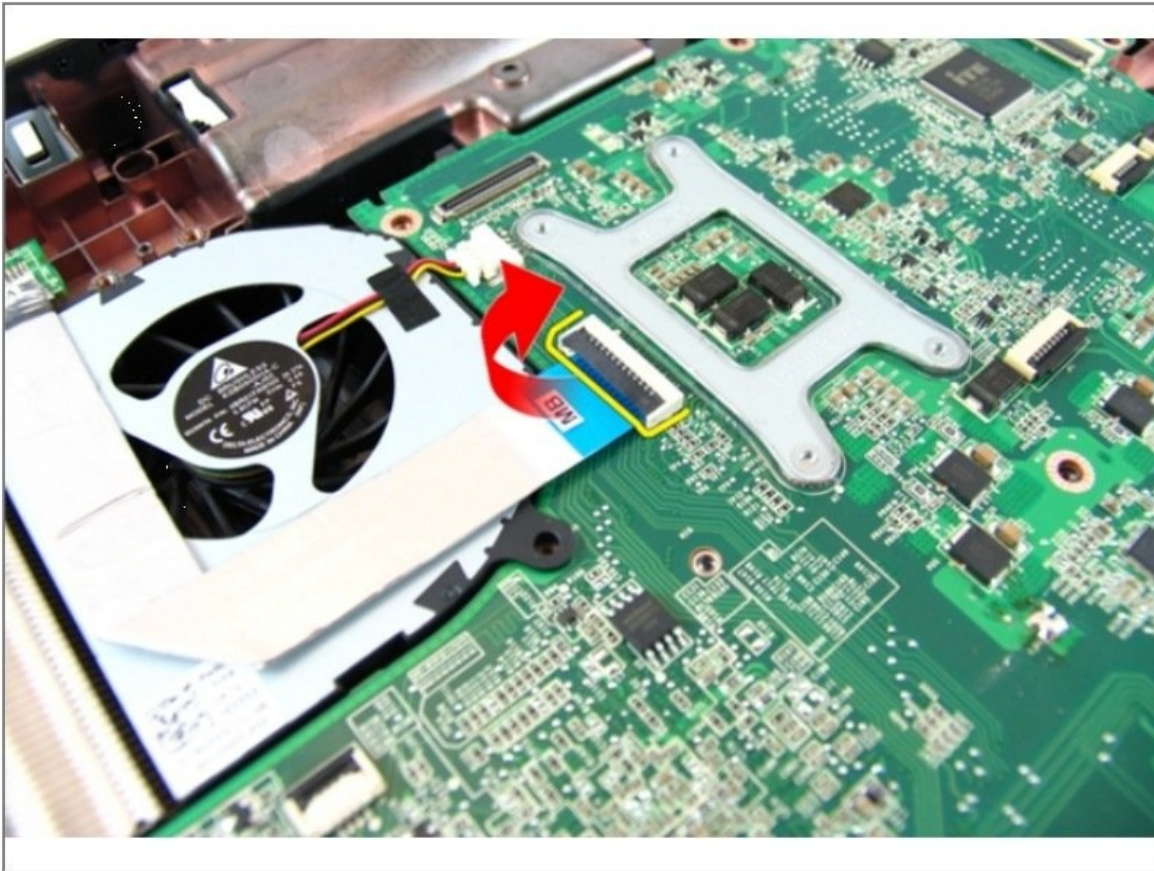




# Dell Vostro 3450 VGA Board Replacement

In this guide, we will show you how to remove...

Written By: Johnathan Hammond



## INTRODUCTION

In this guide, we will show you how to remove and replace the VGA Board.



### TOOLS:

Spudger (1)

Phillips #0 Screwdriver (1)

## Step 1 — Unlocking the Battery



- Slide the left and the right battery release latches to the unlock position.

## Step 2 — Removing the Battery



- Slide the battery and remove it from the computer.

### Step 3 — Prying the Keyboard



- Press the keyboard down. Pry the keyboard with the use of a flat-head screwdriver towards the display to reveal the first keyboard retainer.

### Step 4 — Prying the Keyboard retainer



- Pry up the second keyboard retainer.

### Step 5 — Pry up the Keyboard Retainer



- Pry up the third keyboard retainer.

## Step 6 — Prying the Retainer



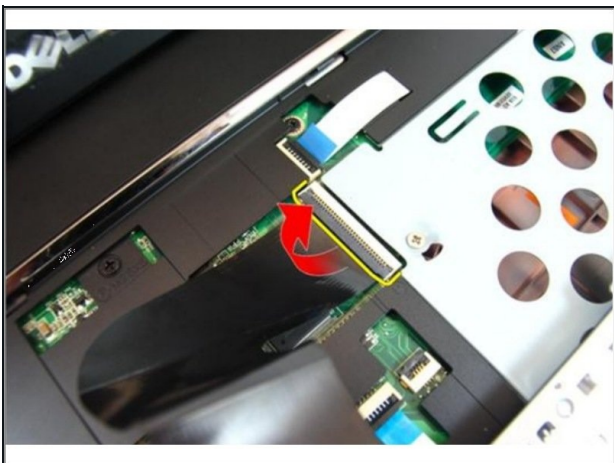
- Pry up the fourth keyboard retainer.

## Step 7 — Pull up the Keyboard



- Pull up the keyboard from the palm rest.

## Step 8 — Release the Latch



- Release the latch on the system board connector, then disconnect the keyboard cable.
- ☒ If this is all you are doing Follow Step In Reverse if not Go to Next Step.

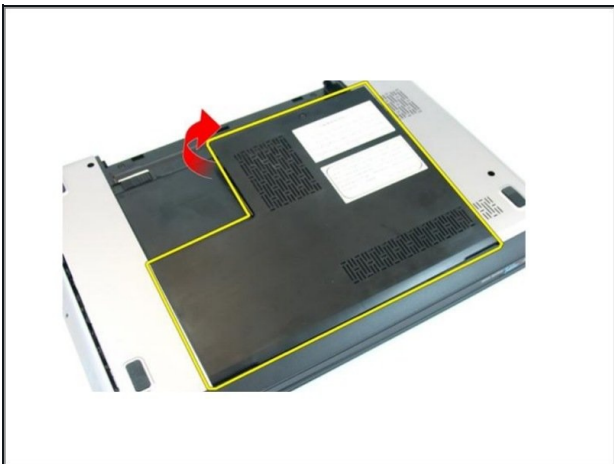


### Step 9 — Loosen the Screw



- Loosen the screw that secures the memory door.

### Step 10 — Removing the Memory Door



- Pry up the memory door near the screw hole, lift and remove it.
- ☒ If this is all you are doing Follow Step In Reverse if not Go to Next Step.

### Step 11 — Remove the Screw



- Remove the screw that secures the optical drive to the computer.

## Step 12 — Prying the Drive



- Gently pry the optical drive out of the computer.

## Step 13 — Remove the Screws



- Remove the screws that secure the optical drive bracket.

## Step 14 — Removing the Optical Drive



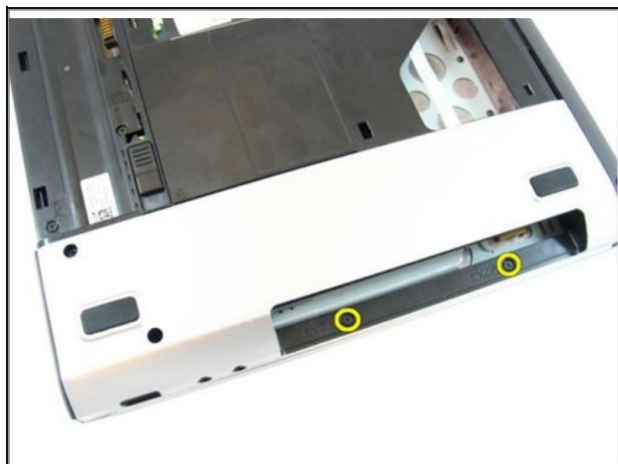
- Remove the optical drive bracket from the optical drive module.

### Step 15 — Remove the Screws



- Remove the screws in the battery compartment.

### Step 16 — Remove the Screws



- Remove the screws in the optical drive compartment.

### Step 17 — Remove the Rubber



- Remove the rubber from the bottom base on the right side.

### Step 18 — Remove the Rubber



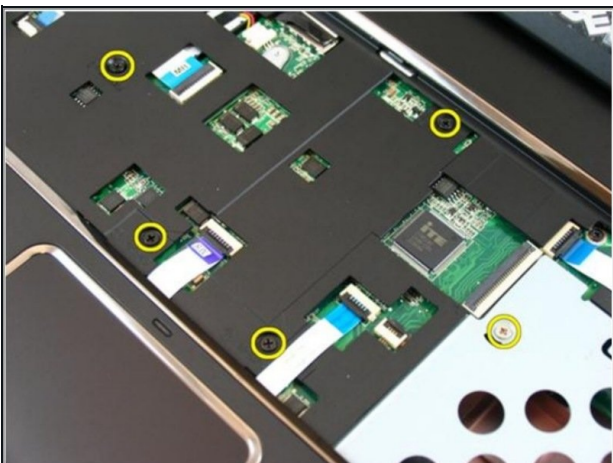
- Remove the rubber from the bottom base on the left side.

### Step 19 — Remove the Screws



- Remove all the screws from the bottom base.

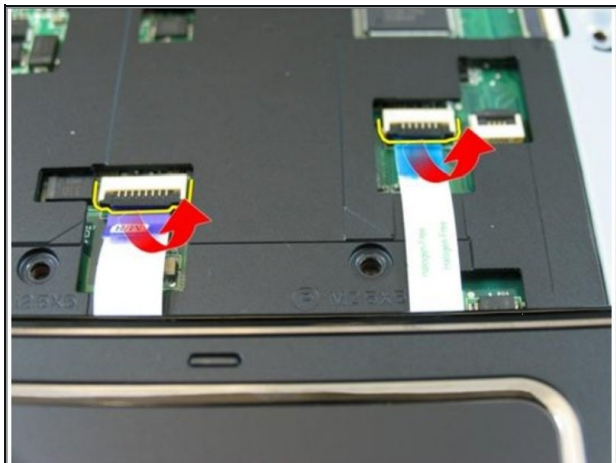
### Step 20 — Remove the Screws



- Flip the computer around and remove the screws that secures the palm rest.

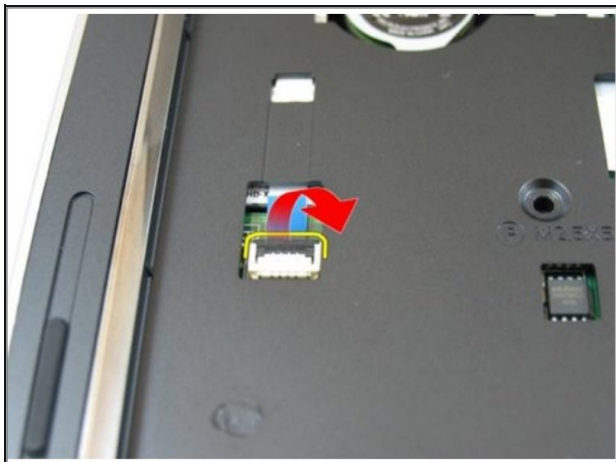


### Step 21 — Release the Latches



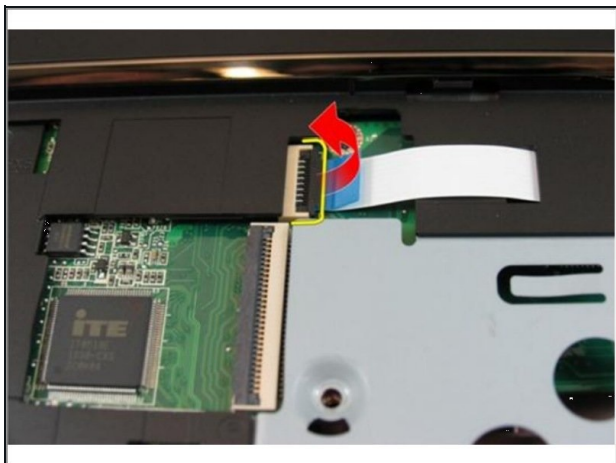
- Release the latches on the system board connector, then disconnect the touch pad cable and the finger printer cable.

### Step 22 — Release the Latch



- Release the latch on the system board connector and then disconnect the power button cable.

### Step 23 — Disconnecting the Key Cable



- Release the latch on the system board connector and then disconnect the hot key cable.

### Step 24 — Prying the Palm Rest



- Pry up the right side of the palm rest.

### Step 25 — Prying the Palm Rest



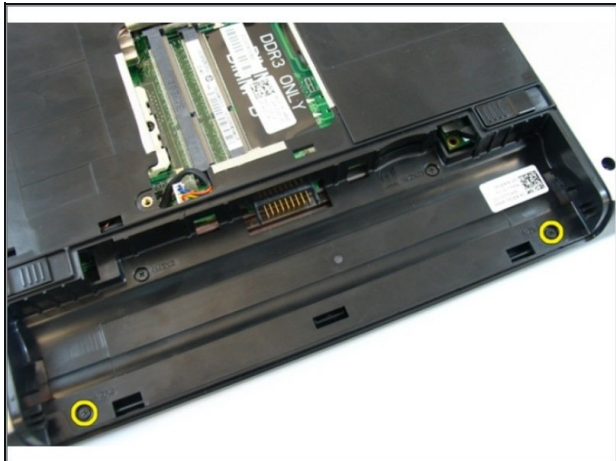
- Pry up the left side of the palm rest.

### Step 26 — Prying the Sides



- Pry up the sides of the palm rest and remove it from the computer.
- ☐ If this is all you are doing Follow Step In Reverse if not Go to Next Step.

## Step 27 — Remove the Screws



- Remove the screws that secure the hinge cover.

## Step 28 — Press Down on the Hooks



- Press down on the hooks highlighted in the image.

## Step 29 — Removing the Hinge Cover



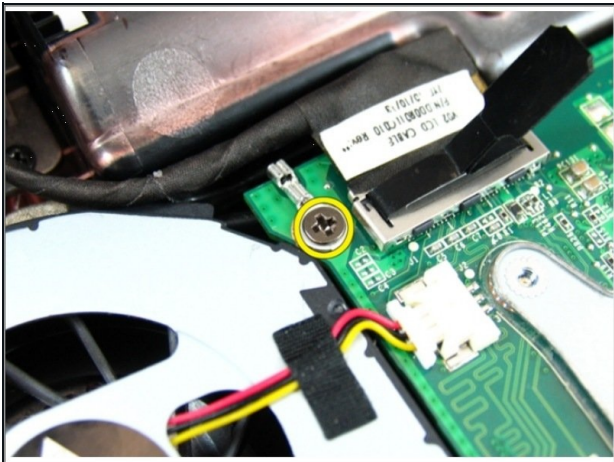
- Flip the computer around and remove the hinge cover from the side.
- ☒ If this is all you are doing Follow Step In Reverse if not Go to Next Step.

### Step 30 — Remove the Screws



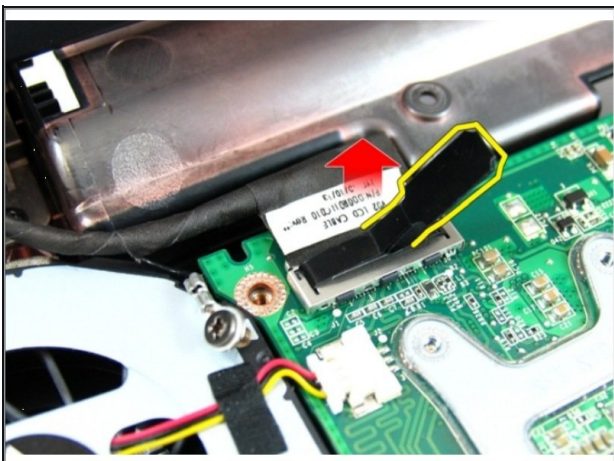
- Remove the screws that secure the display hinge.

### Step 31 — Loosen the Screw



- Loosen the screw that secures the low-voltage differential signaling (LVDS) cable.

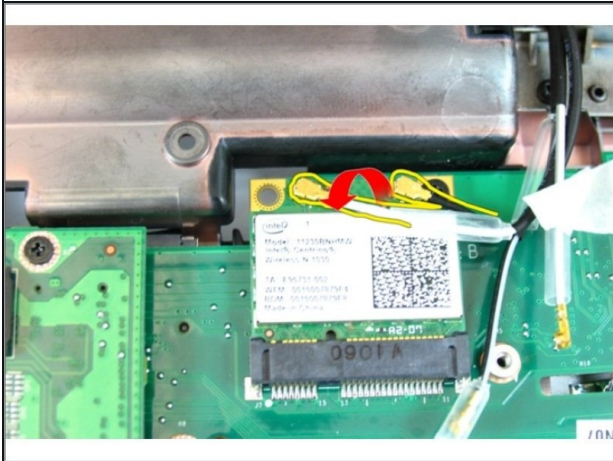
### Step 32 — Disconnecting the LVDS Cable



- Disconnect the LVDS cable from the system board.

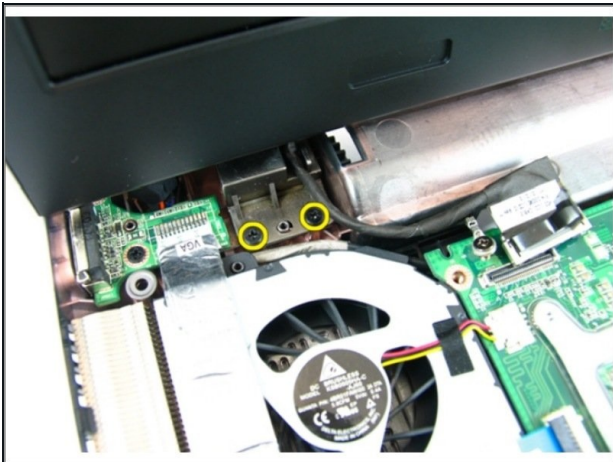


### Step 33 — Disconnecting the Wireless Cables



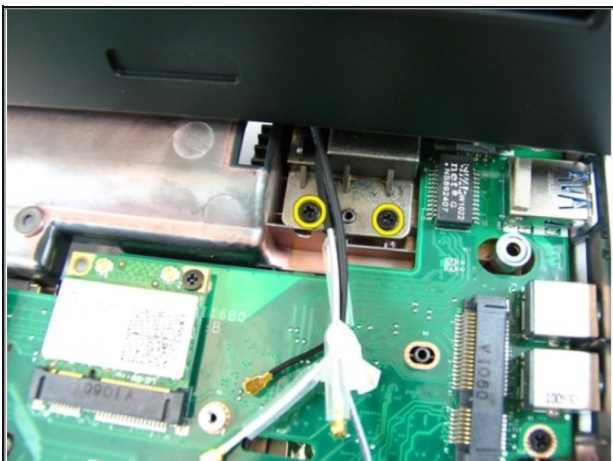
- Disconnect the wireless local area network (WLAN) antenna cable.

### Step 34 — Remove the Screws



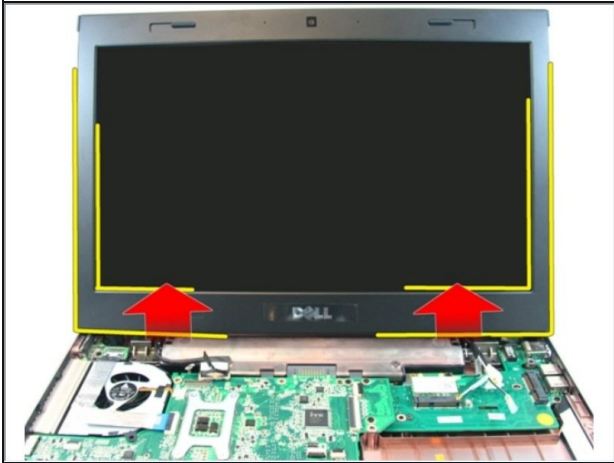
- Remove the screws that secure the left hinge.

### Step 35 — Remove the Screws



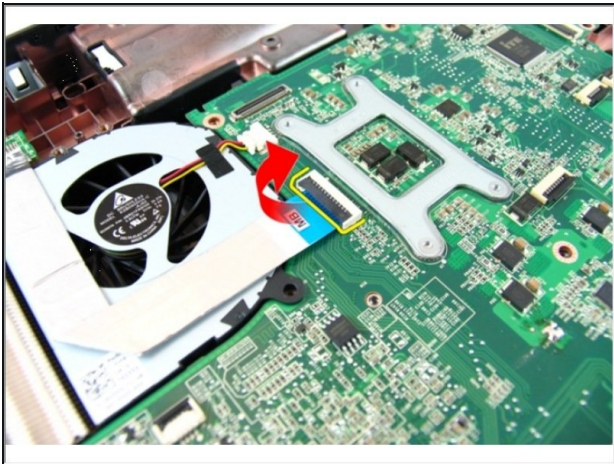
- Remove the screws that secure the right hinge.

### Step 36 — Lifting the Display Assembly



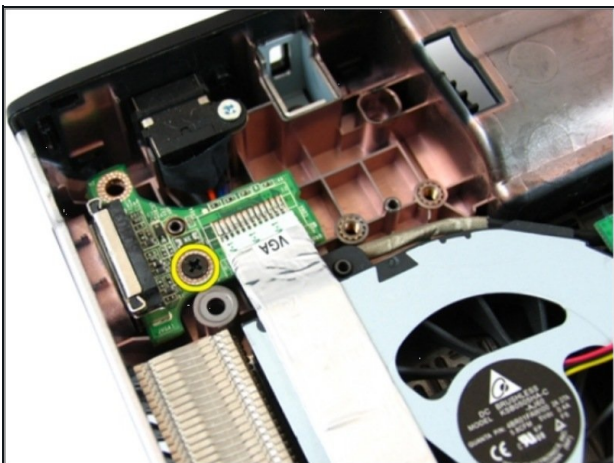
- Lift the display assembly and remove it from the computer.
- ☒ If this is all you are doing Follow Step In Reverse if not Go to Next Step.

### Step 37 — Release the Latch



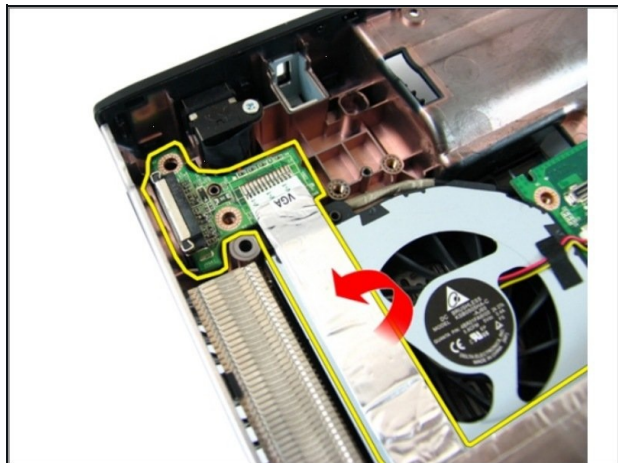
- Release the latch on the system board and then disconnect the VGA cable.

### Step 38 — Remove the Screw



- Remove the screw that secures the VGA board.

## Step 39 — Remove the VGA Board



- Remove the VGA board from the chassis.

☒ If this is all you are doing Follow Step In Reverse if not Go to Next Step.