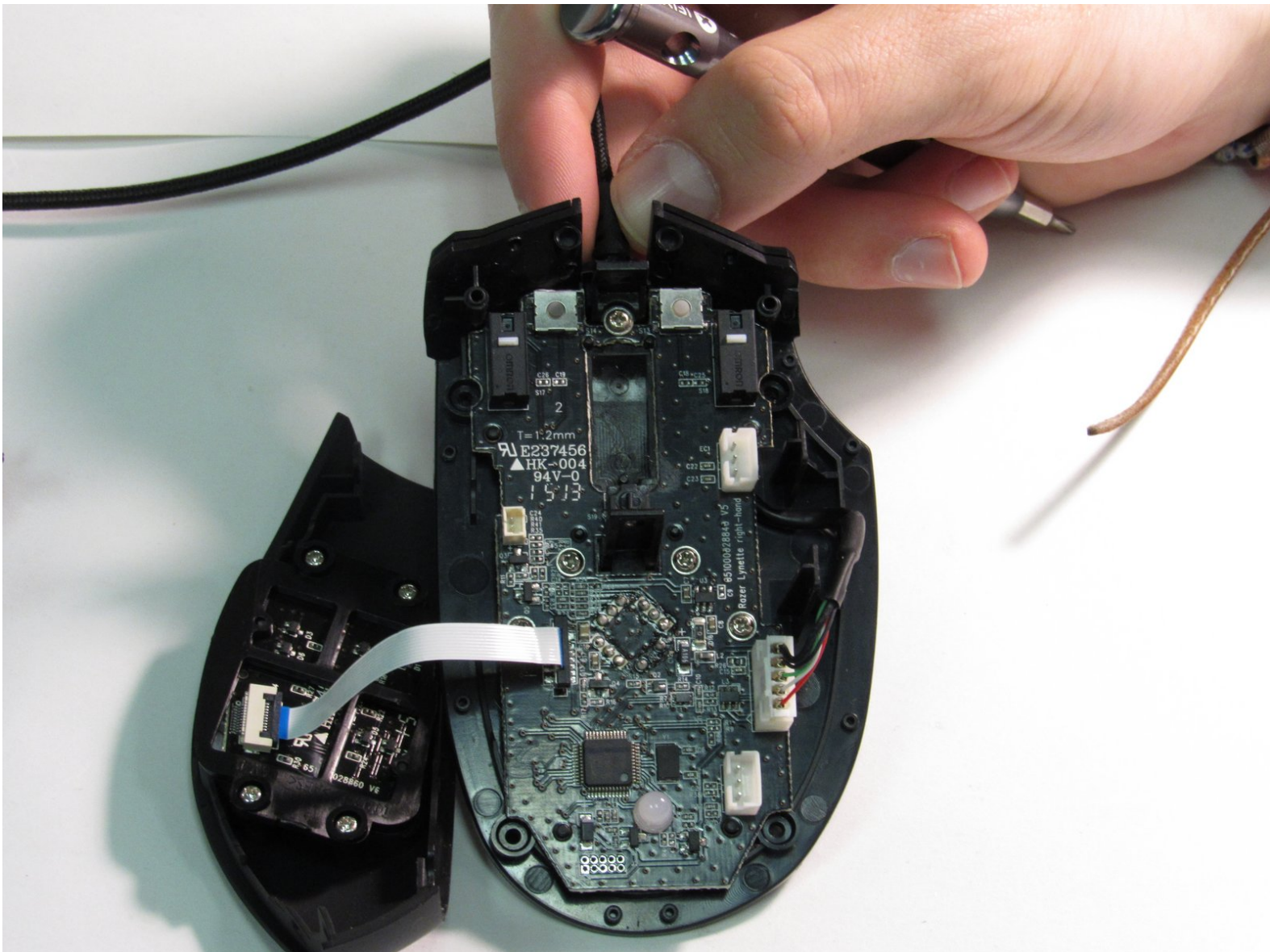




# Razer Naga Expert MMO Motherboard Replacement

This guide will help you replace the motherboard of your Razer Naga Expert MMO, which allows your mouse to function.

Written By: Jacqueline Scalzo



## INTRODUCTION

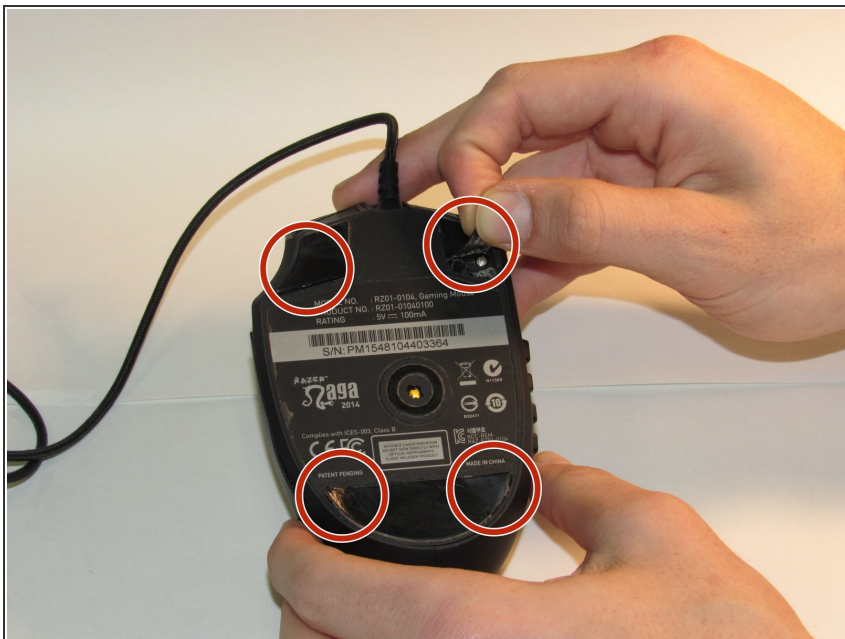
This guide will help you replace the motherboard, which allows your mouse to function. Be sure to keep track of the 5mm screws and the 7mm screws.



### TOOLS:

- [Phillips #00 Screwdriver](#) (1)
  - [Spudger](#) (1)
-

## Step 1 — Top Plastic Shell



- Peel back the two teflon tape from the top corners and the one larger one from the bottom with a spudger.

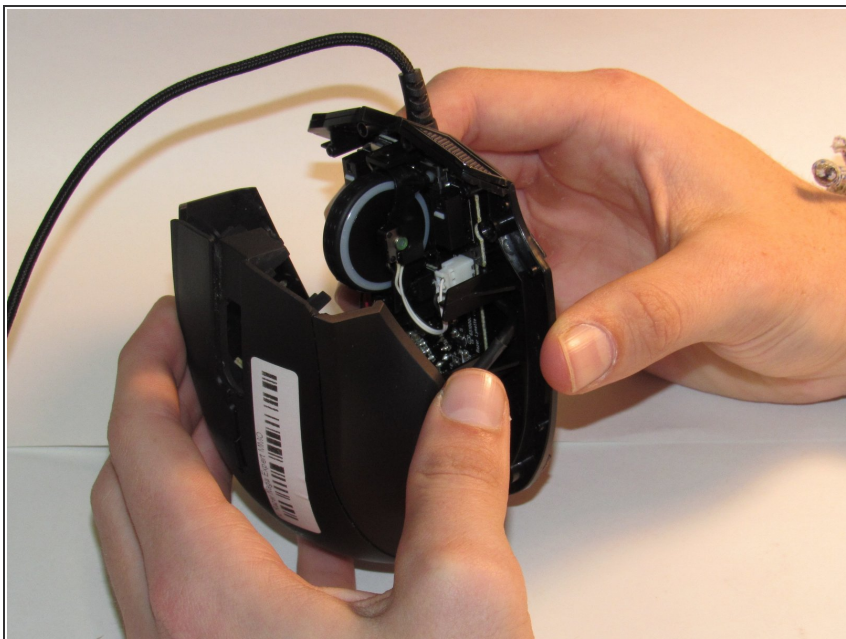
## Step 2



- Remove the four 7mm screws using a Phillips #00 screwdriver.

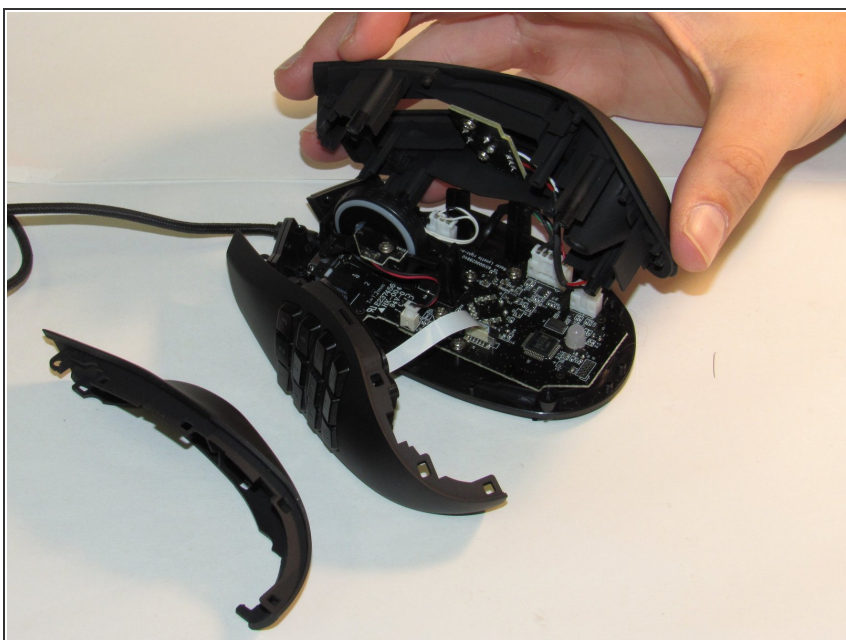


## Step 3



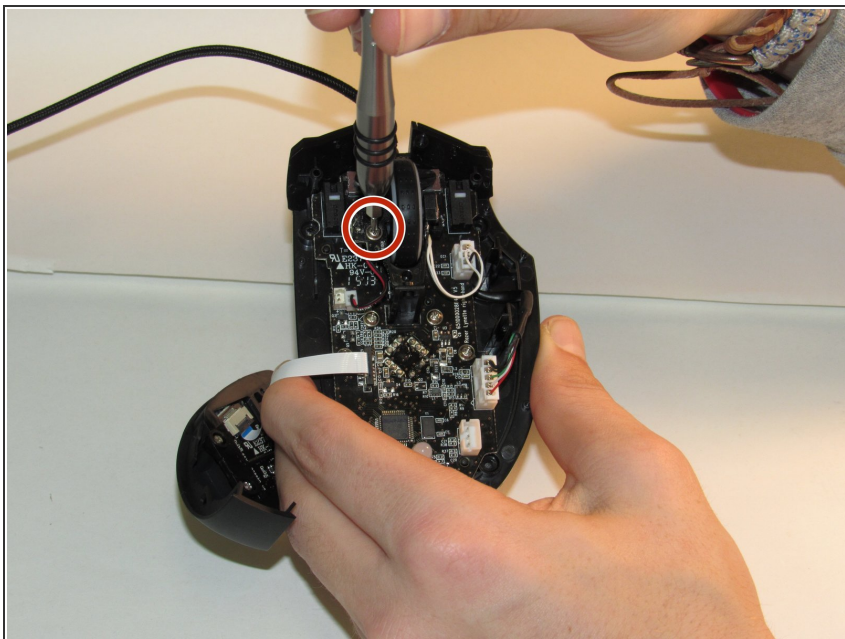
- Gently remove the top plastic plate of the mouse.
- Unplug the white cord from the circuit board.

## Step 4



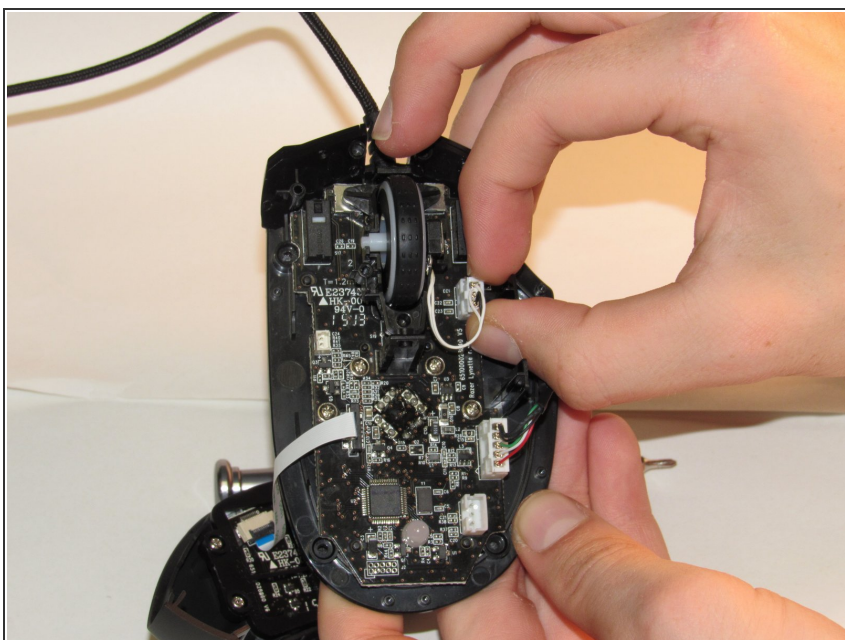
- Lightly pull the two plastic sides of the mouse to remove them.

## Step 5 — Scroll Wheel



- Using a Phillips #00 screwdriver, remove the 5mm screw holding the scroll wheel in place.

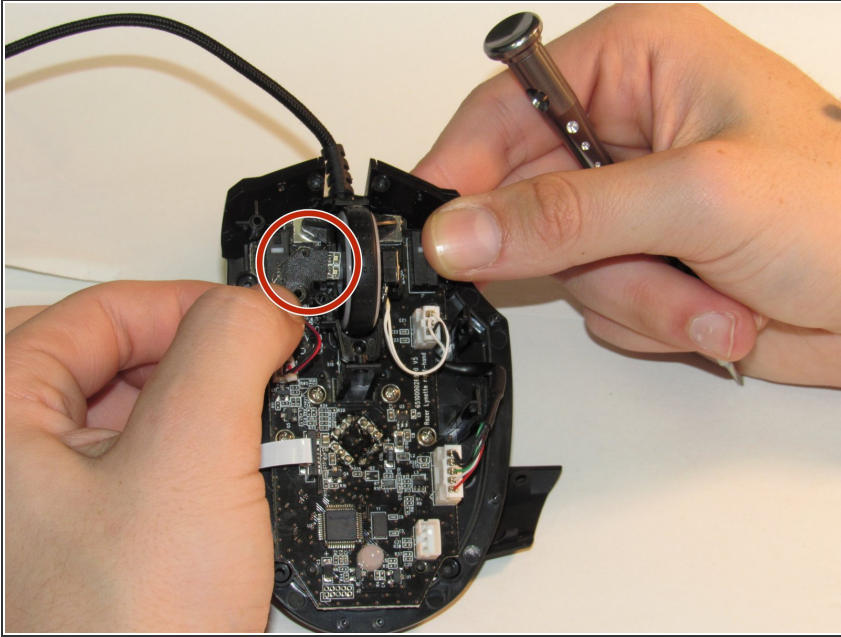
## Step 6



- Unplug the cord that connects the scroll wheel to the motherboard.

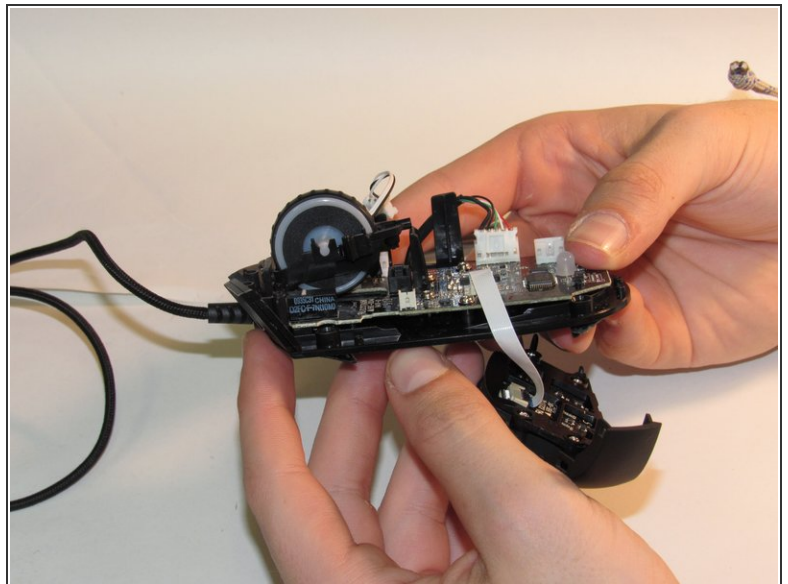
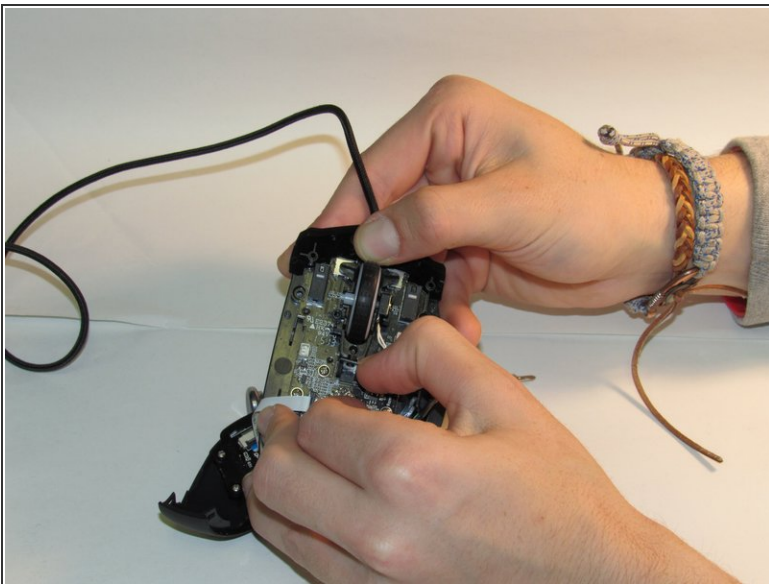


## Step 7



- Slide the chip out of the scroll wheel.

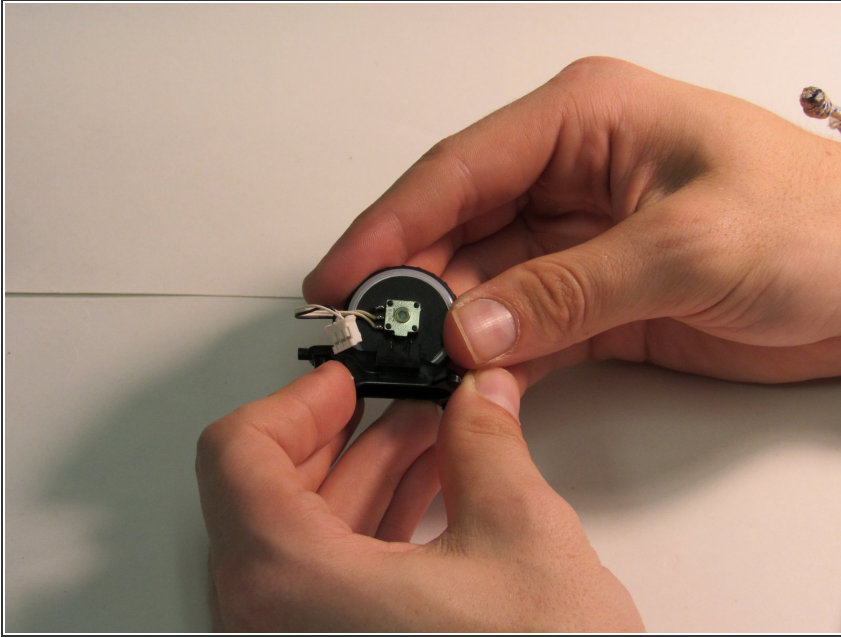
## Step 8



- Gently wiggle the scroll wheel up and back to remove the scroll wheel from the mouse.
- ⚠ Use your fingers to simultaneously push the scroll wheel and its frame forward and pull back on the plastic tab directly behind the scroll wheel until it is loose.
- Use your thumbs to pop the scroll wheel out from its plastic frame.

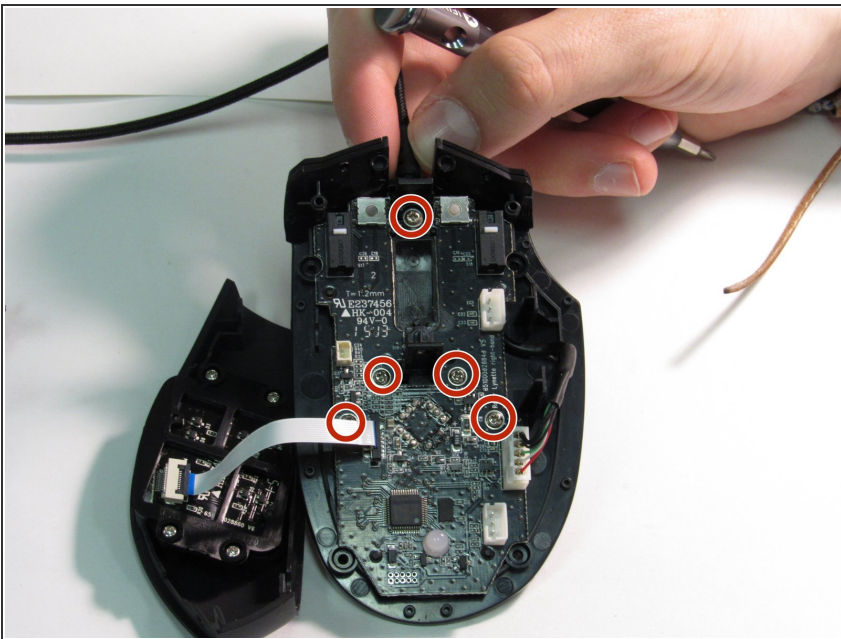
This document was generated on 2020-11-18 12:10:03 PM (MST).

## Step 9



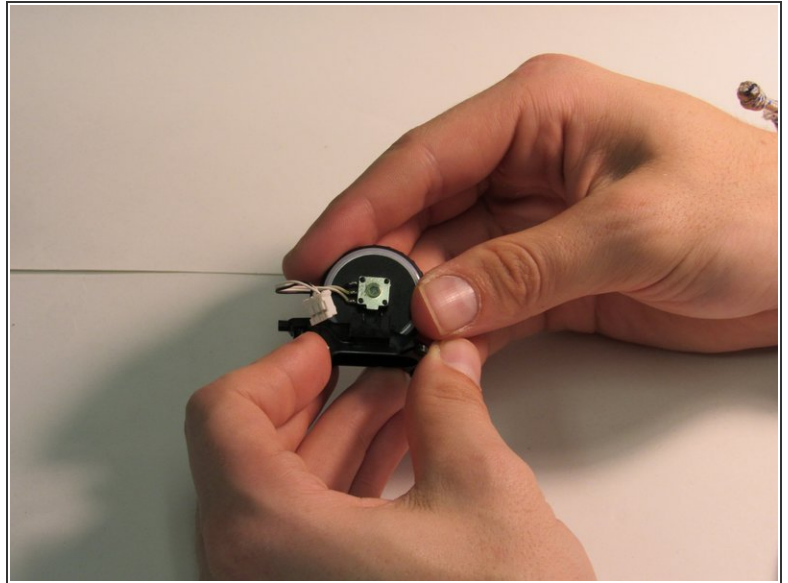
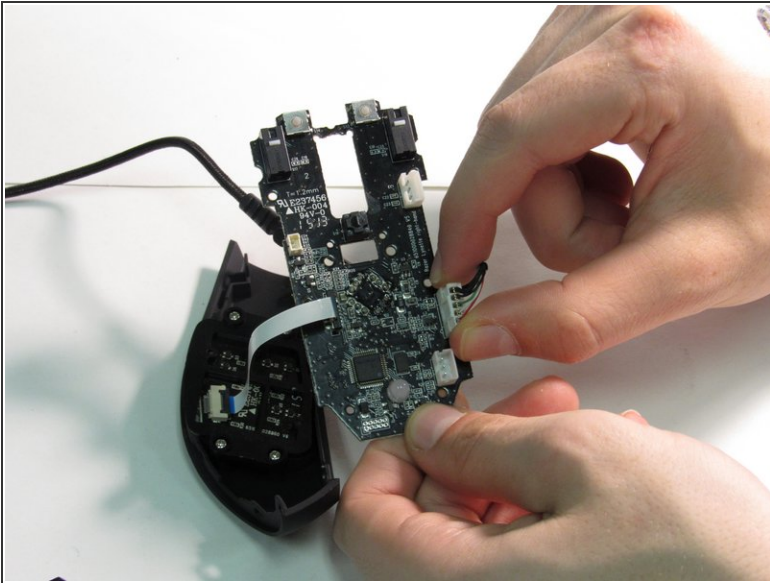
- Place the new scroll wheel in the mount.
- ☑ Upon reassembly, be careful to ensure the silver box on the side of the wheel is placed into the frame with the tab facing downward so upon entry into the frame it fits into its slot.

## Step 10 — Motherboard



- Using a Phillips #00 screwdriver, remove all five 5mm screws that connect the motherboard to the main frame.

## Step 11



- Place the new motherboard in the mouse.
- When reassembling the mouse, place the loose plastic piece that holds the scroll wheel and wire in place into the rectangular slots in the circuit board.

To reassemble your device, follow these instructions in reverse order.