



# Dell Inspiron 11-3164 Motherboard Replacement

This guide will describe in detail on how to replace a motherboard on Dell Inspiron 11-3164.

Written By: Watis Ekthuvapranee



---

## INTRODUCTION

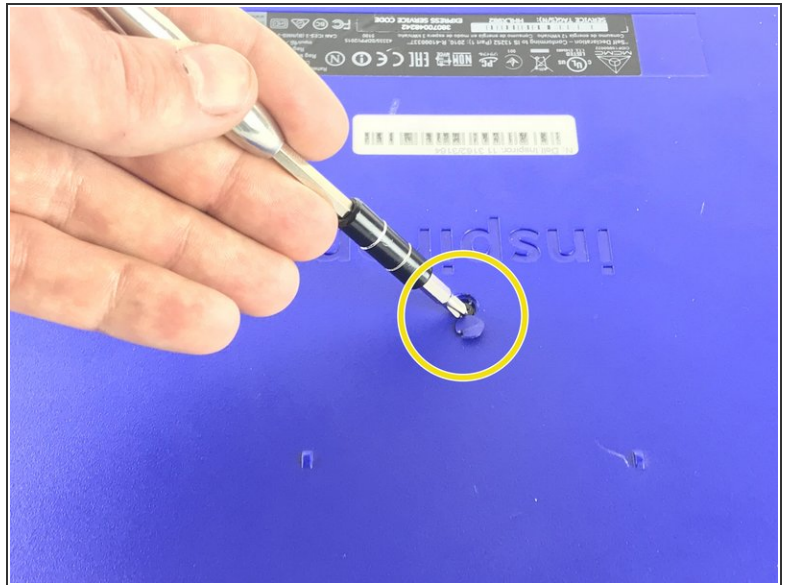
Replacing a motherboard is a multi-step process. All devices within the laptop must be disconnected and some must be removed before the motherboard can be replaced. So, the very first step should be running diagnostic on the computer. Dell has a website that can diagnose the problems automatically by clicking [here](#).



### TOOLS:

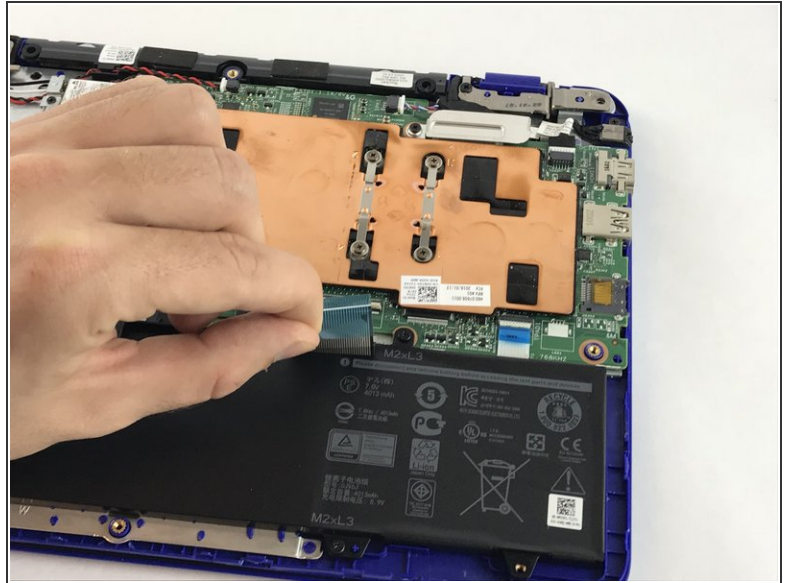
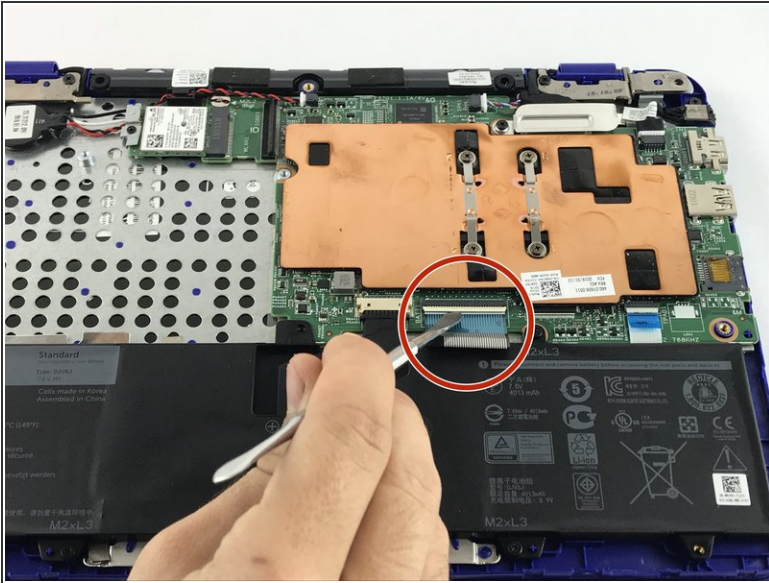
- [Magnetic Project Mat](#) (1)
  - [Spudger](#) (1)
  - [Phillips #1 Screwdriver](#) (1)
-

## Step 1 — Motherboard



- Start by placing the laptop upside down to expose the first set of screws on the bottom of the laptop. Use your J1 Phillips head screwdriver bit to unscrew the 8 size 60 mm screws.
- Remove the plastic cover to unveil the final screw holding the front and back frame together.
- Remove this last screw of size 60mm with the J1 phillips head bit found in the approved iFixit toolkit.

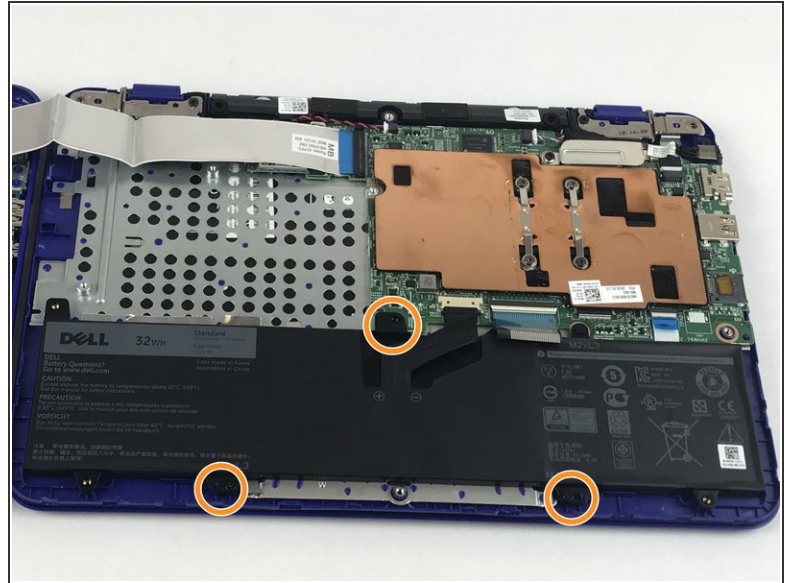
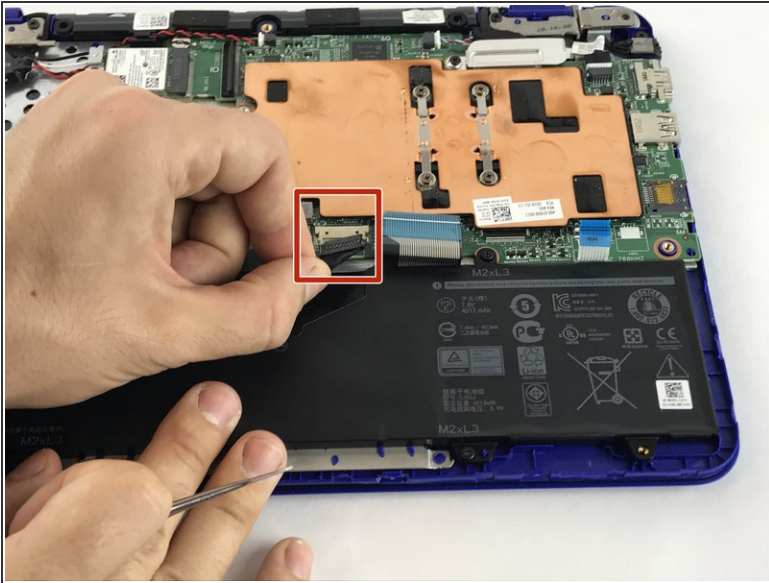
## Step 2



- Open the latches and disconnect the touch-pad cable and keyboard cable from the system board.

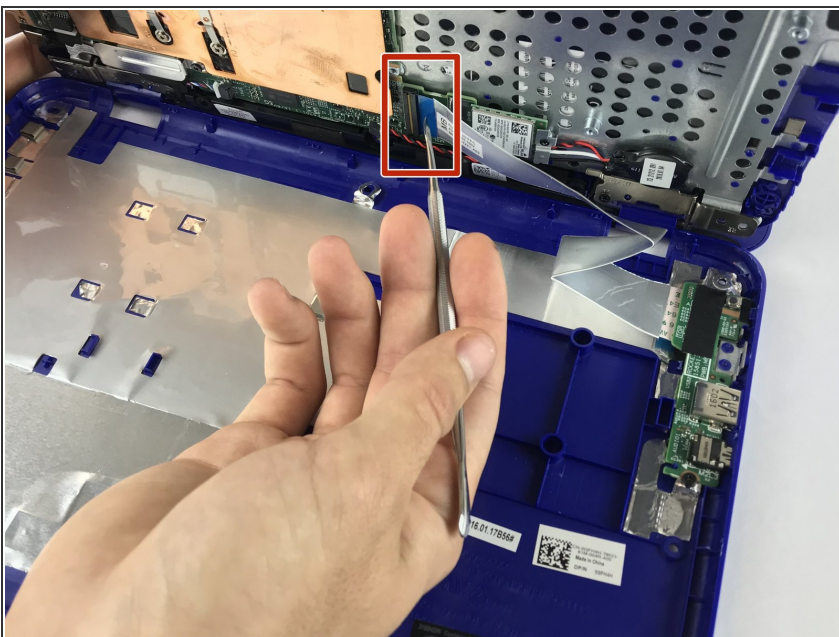


## Step 3



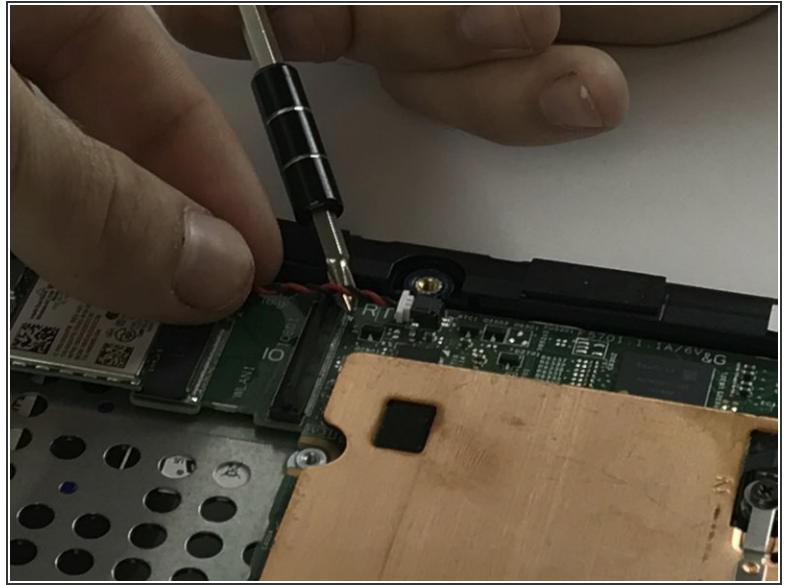
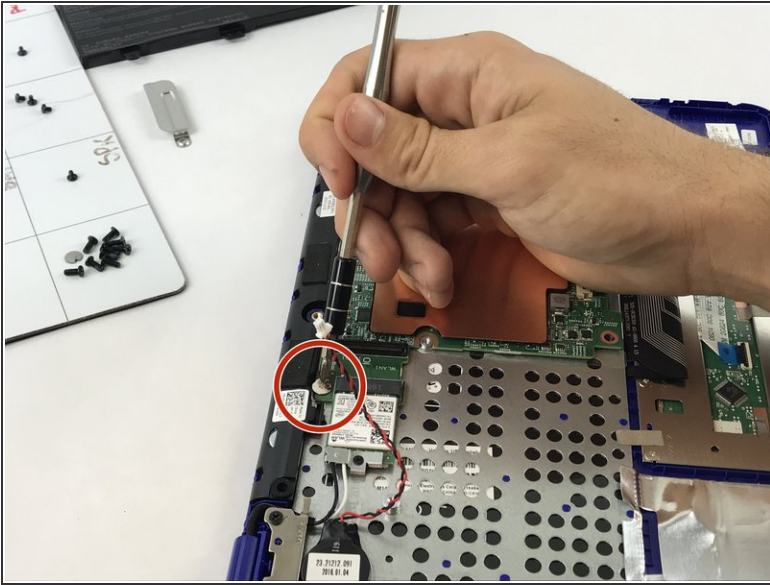
- Disconnect the battery cable from the system board.
- Remove the screws that secure the battery to the palm rest and keyboard assembly by using the PH1 screw driver to unscrew the three size 40 mm battery screws.
- ❗ There is no way that motherboard can be removed with battery pack still attached to the laptop.

## Step 4



- Open the latch and disconnect the I/O-board cable from system board.

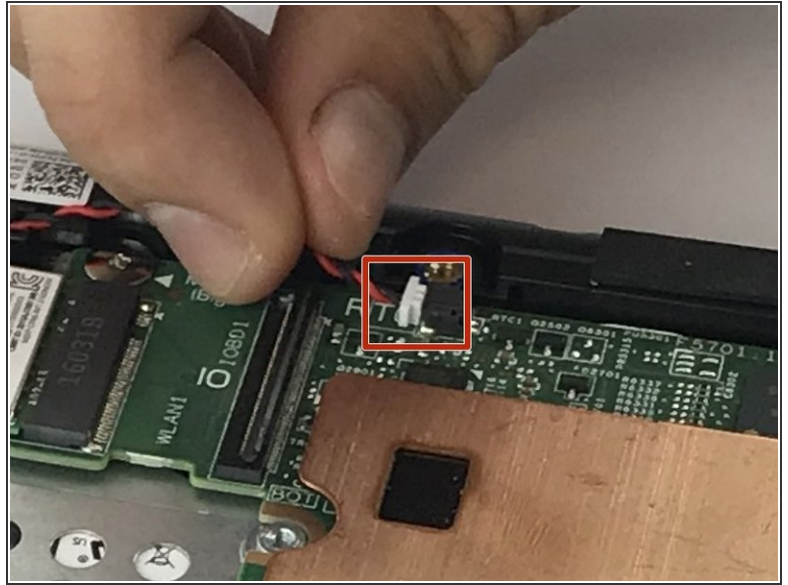
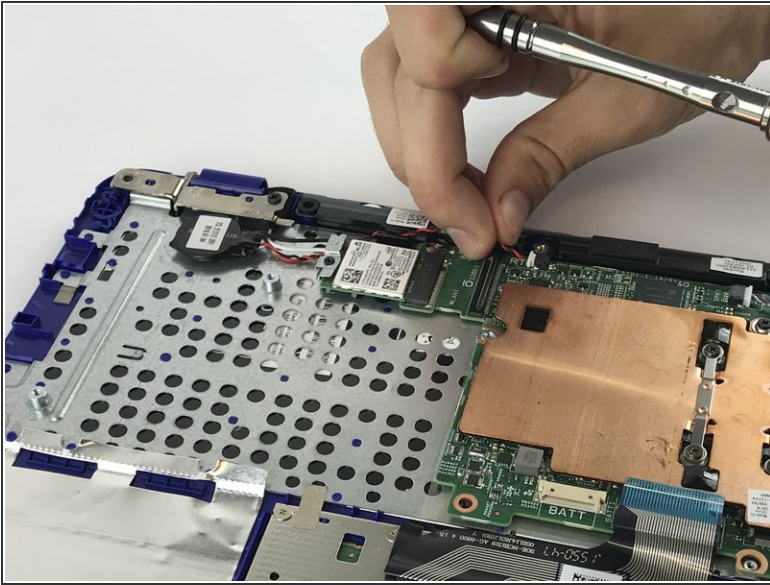
## Step 5



- Remove the 2mm screw that secures the motherboard and keyboard assembly.

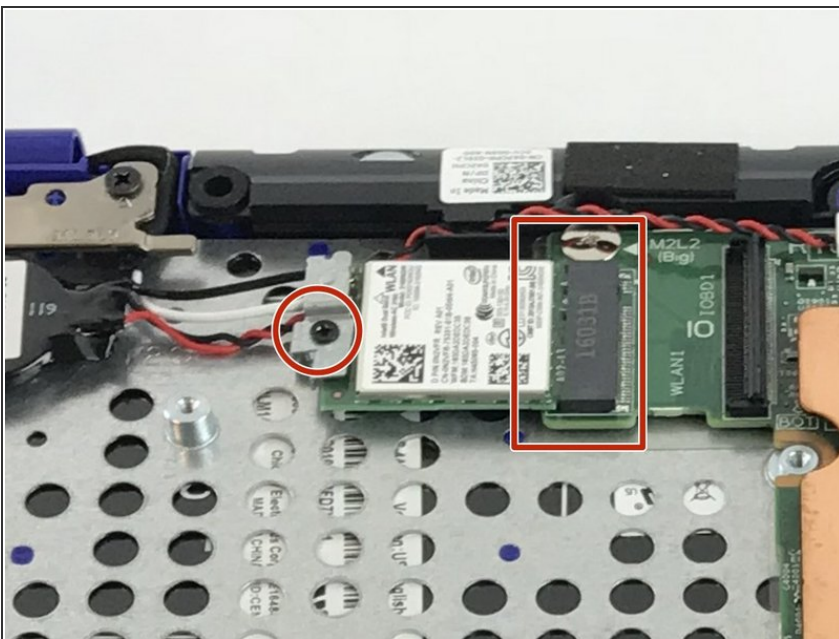


## Step 6



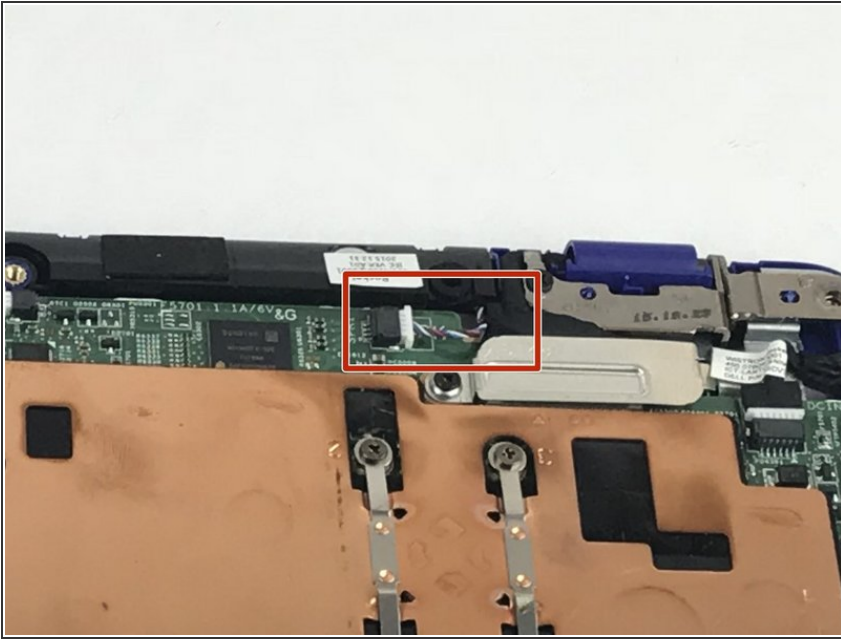
- Disconnect the coin-cell battery cable from the system board.
- ⓘ To remove the cable, use a small pliers or Angled Precision Tweezers on the left and right ledges on the adapter.
- ⚠ **Do not pull by the cord.**

## Step 7



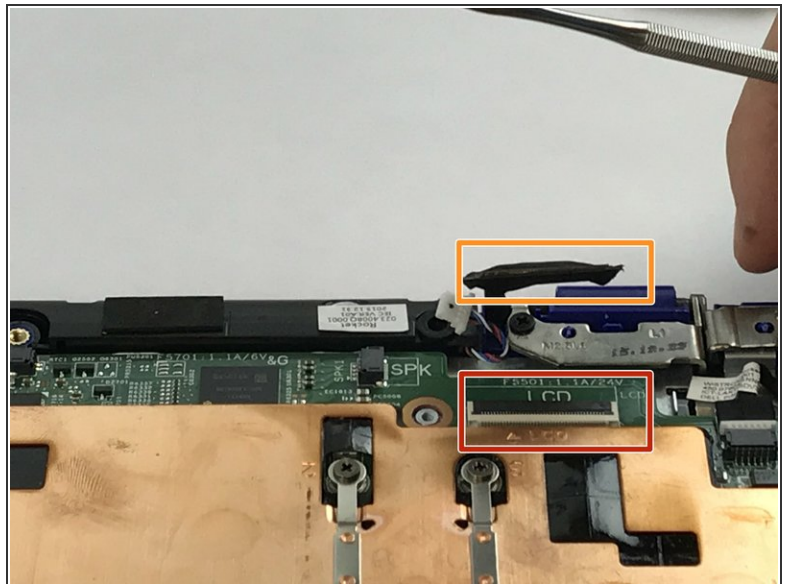
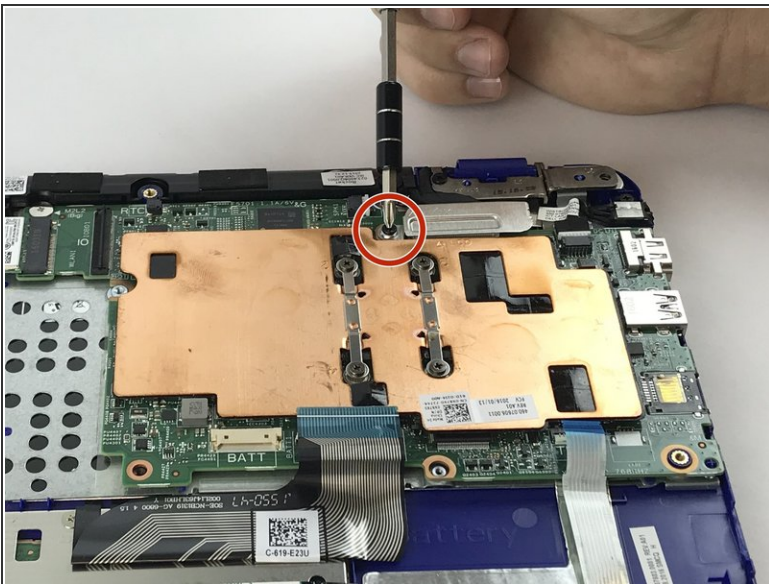
- Removing the Wireless WLAN Card
- Remove the M2 x 3mm bracket screw.
- Remove the metal bracket.
- With tweezers, detach the white and black antenna cables connected to the Wireless WLAN Card.
- Remove the Wireless WLAN Card by slide the assembly out of motherboard wireless socket.

## Step 8



- Disconnect the speaker cable from the system board.

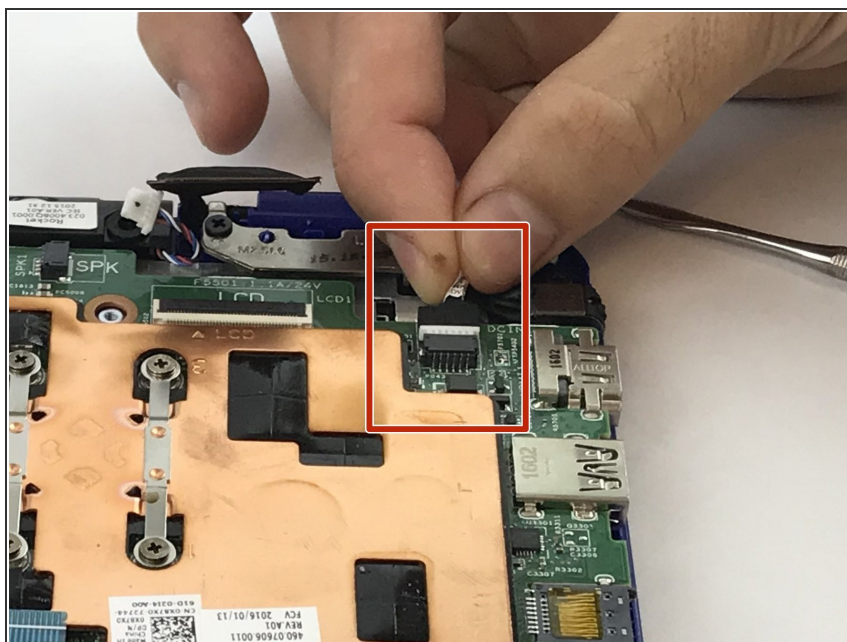
## Step 9



- Remove the M2xL3 screw on display-cable guard to the system board.
- Detach the cable beneath.

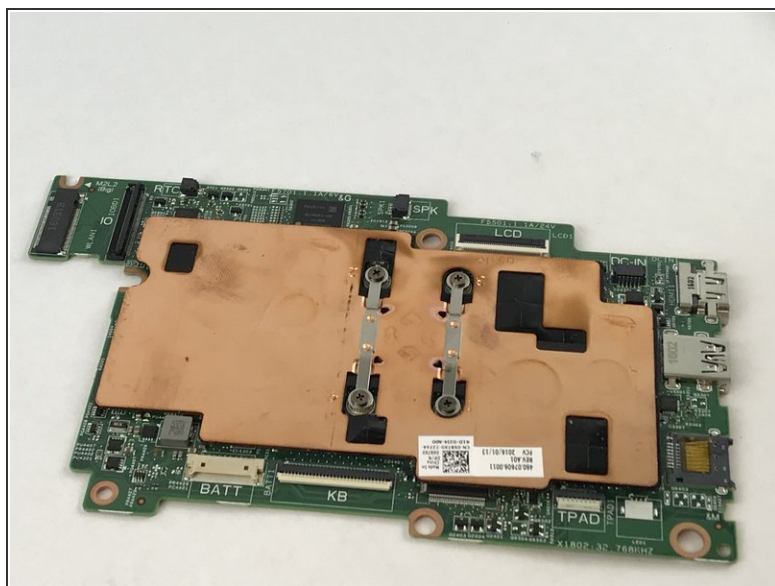
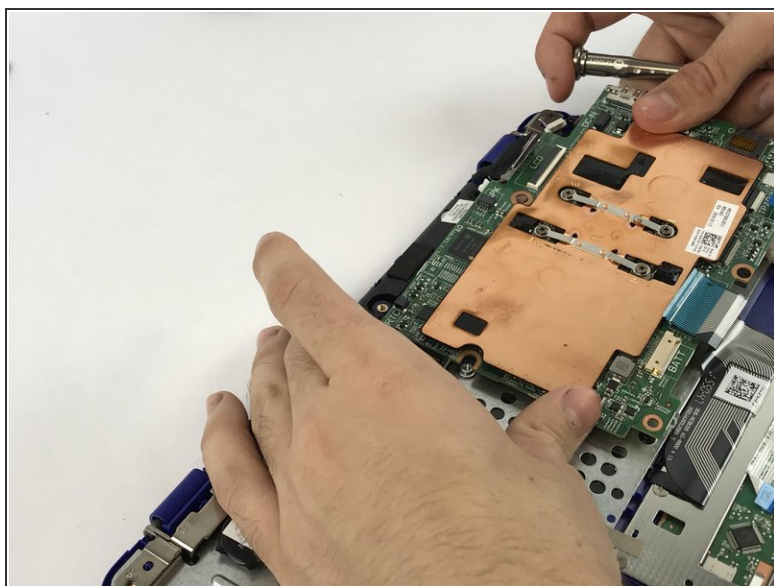


## Step 10



- Disconnect the power-adaptor port cable from the system board.
- ⓘ Use angle precision tweezers to put on the ledge alongside the adapter away from the motherboard socket.
- ⚠ Warning: to avoid damaging the cord, do not pull by the cable.

## Step 11



- Lift the mother board off the palm rest and keyboard assembly.

To reassemble your device, follow these instructions in reverse order.