



Logitech G700s Side Button Array Replacement

Replace the four side buttons on a Logitech G700s gaming mouse.

Written By: Chase Tisinger



INTRODUCTION

By following this guide you will be able to remove and replace the quad side button array on your Logitech G700s gaming mouse.



TOOLS:

- [iFixit Opening Tools](#) (1)
- [Tweezers](#) (1)



PARTS:

- [Quad Side Button Assembly](#) (1)

Step 1 — Top Case Replacement



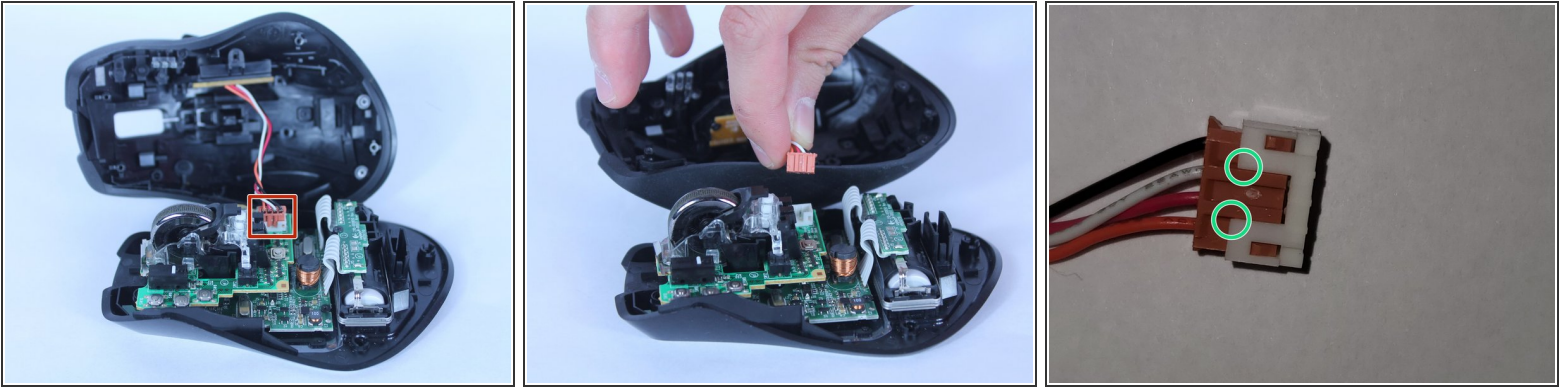
- Remove the batteries from the mouse.
- Use a plastic opening tool to peel up the four mouse feet.

Step 2



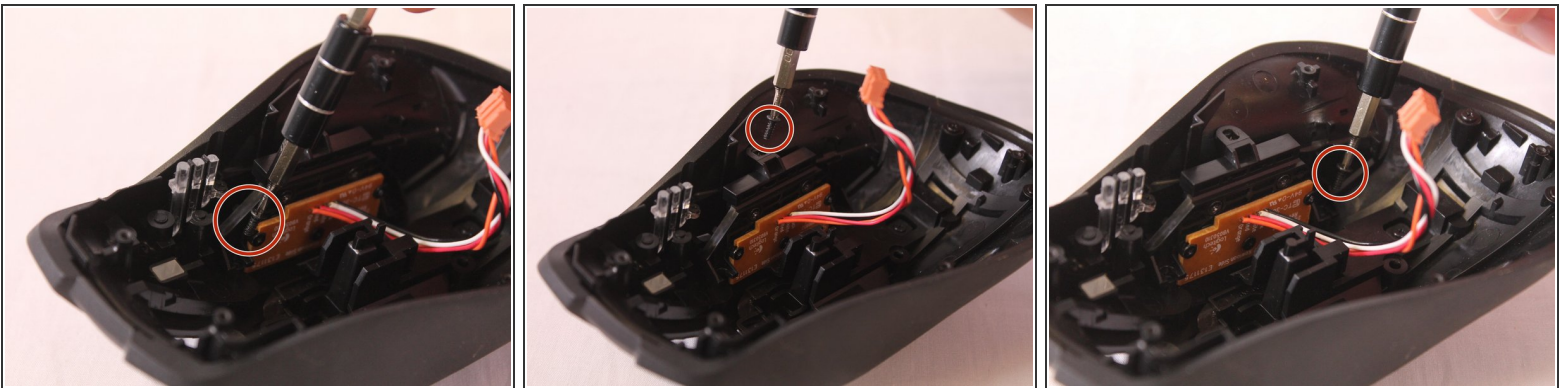
- Remove the five 5.5mm Phillips #00 screws found underneath the mouse feet.

Step 3



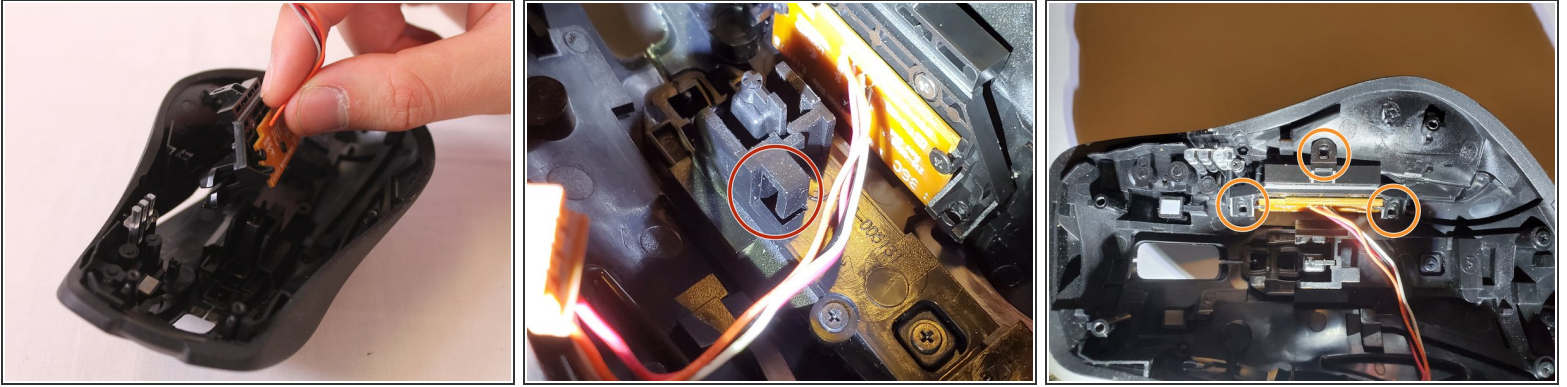
- Pull the top of the mouse off of the bottom half.
 - ⓘ There's a wire connecting the two halves.
- Unplug the programmable buttons from the motherboard.
 - ⓘ The white pin housing on the motherboard may come off while unplugging. In that case, use tool to pry between at location indicated to separate them and insert the housing back onto the motherboard.

Step 4 — Programmable Side Buttons



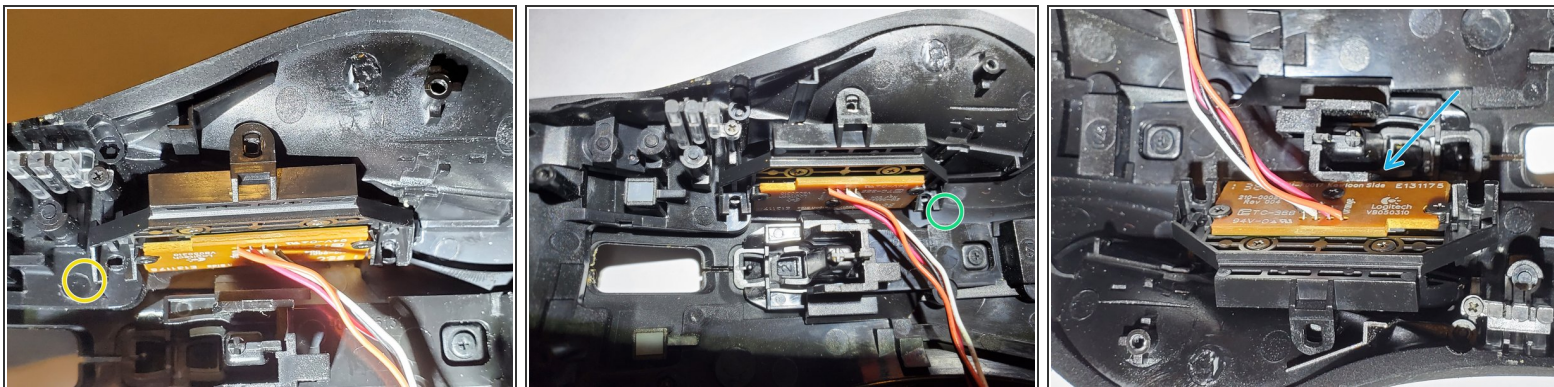
- Remove the three 5.5mm Phillips #00 screws holding the button assembly to the mouse.
- ⚠ **Do not** remove any of the screws on the circuit board, only the ones holding the plastic assembly in place

Step 5



- To remove the side button assembly:
 - First, unhook the cables from the cable guide so it won't get caught while popping the assembly out
 - The assembly is held in by some clip-in action from the screw posts on the top shell and screw holes on the assembly. The next step will explain in detail how to pop it out.
 - ⚠ Definitely don't pull on the cable to remove like shown in the first picture. The wires are kind of frail.

Step 6



- The screw hole near the left and button side seems to be easier to pop out first. Use thumbnail to pry under the marked location while simultaneously pushing on G7 to pop it out.
- Repeat on the other side, pressing on G8.
- The assembly should come loose. Push on the buttons and gently wiggle and pull it out.
 - There will still be a bit of friction between the PCB and the center post on the top shell but it won't take too much force. Try to gently persuade it out.

To reassemble your device, follow these instructions in reverse order.