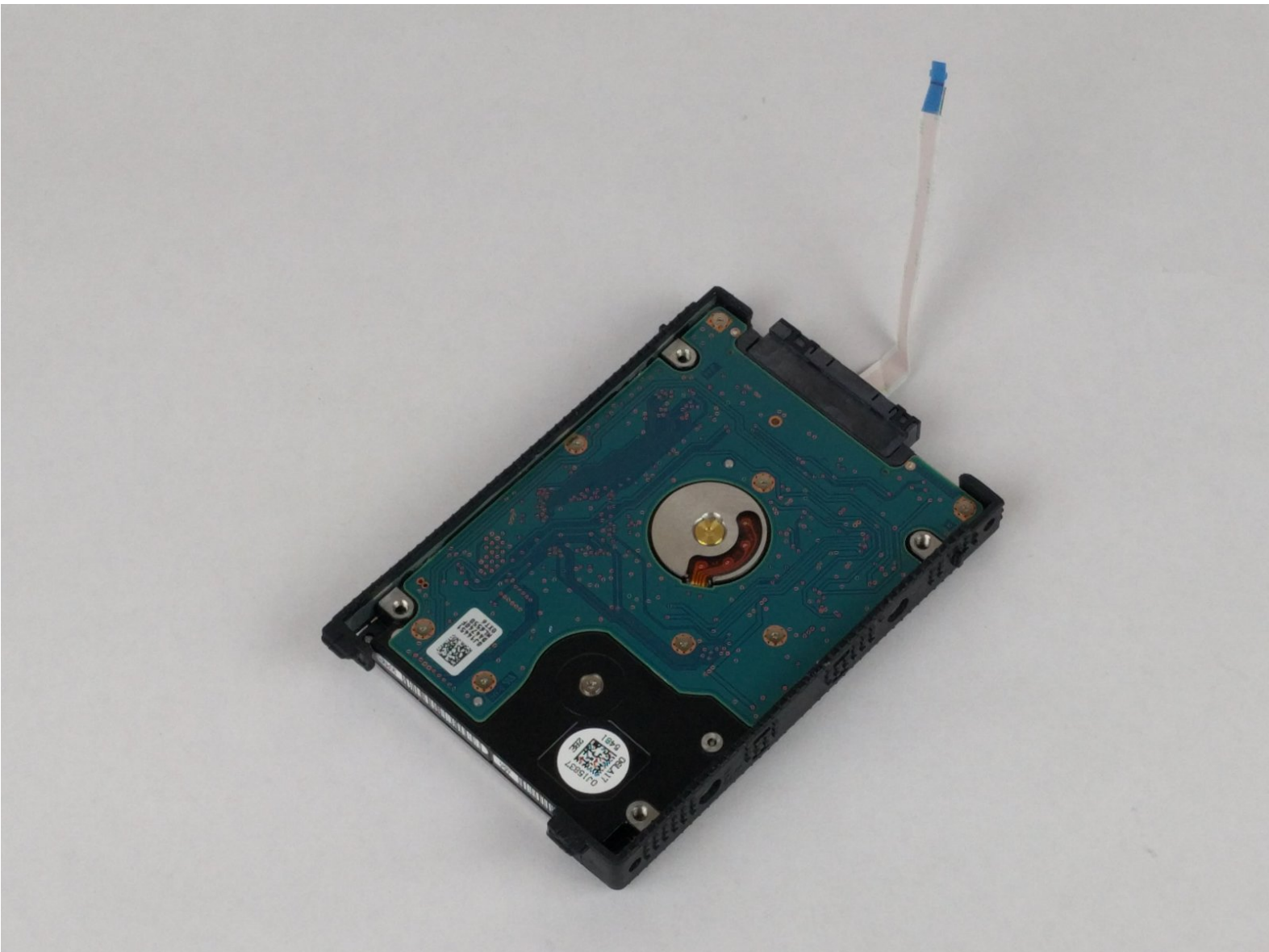




HP Pavilion 15-ab243cl Hard Drive Replacement

If you have a failed hard drive or want to upgrade your existing hard drive, this guide will show you how to replace the hard drive.

Written By: Alexander Bicigo



INTRODUCTION

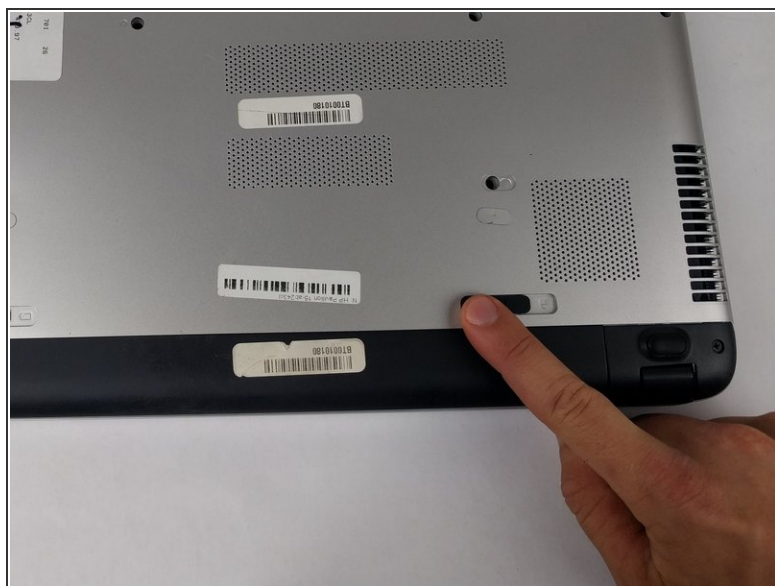
This guide will show you how to open your device and remove the hard drive. Whether you have a failed hard drive or simply want to upgrade to more capacity this guide will take you through the necessary steps involved in replacement.



TOOLS:

- [Phillips #1 Screwdriver](#) (1)
 - [Phillips #00 Screwdriver](#) (1)
 - [Prying and Opening Tool Assortment](#) (1)
 - [Tweezers](#) (1)
-

Step 1 — Battery



- Slide the battery lock tab toward the center of the battery to the unlock position.

Step 2



- Slide the battery release switch to the right until the battery pops out.

Step 3



- Grabbing the top edge of the battery, rotate it toward you and then lift upward to relieve the battery from its slot.

Step 4 — Laptop Case



- With the battery removed, remove both black plastic covers with a plastic opening tool. Unscrew both 7.5 mm screws from the tabs, using a PH1 screw driver. Using a plastic opening tool, pry off both covers.

Step 5



- Remove all 16 of the 3.5 mm screws with a PH1 screwdriver and pry/slide the CD drive out of laptop.

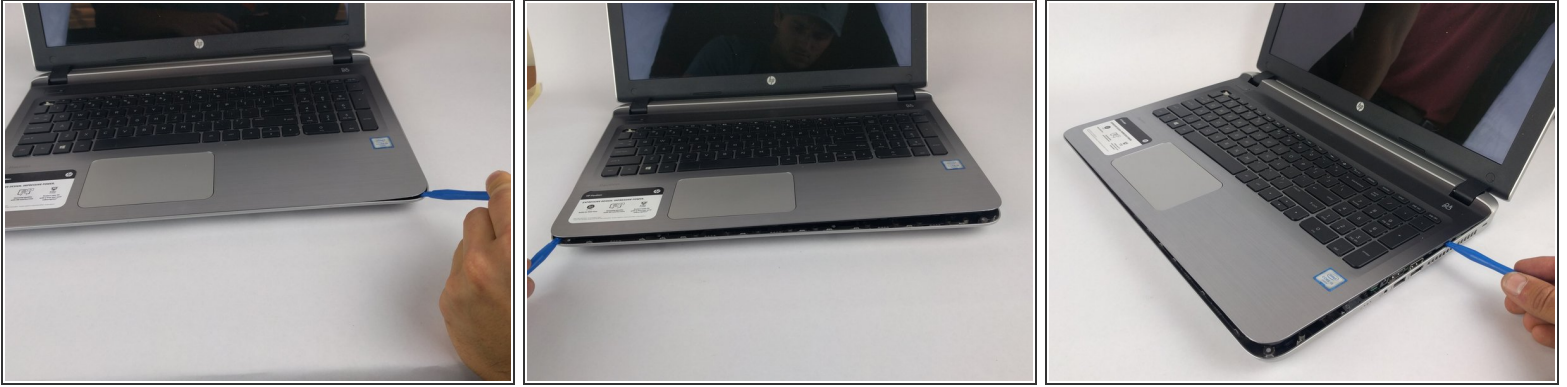
Step 6



- With the CD drive removed, unscrew the two 2mm silver screws with a PH00.

⚠ These can strip easily, so take your time removing.

Step 7



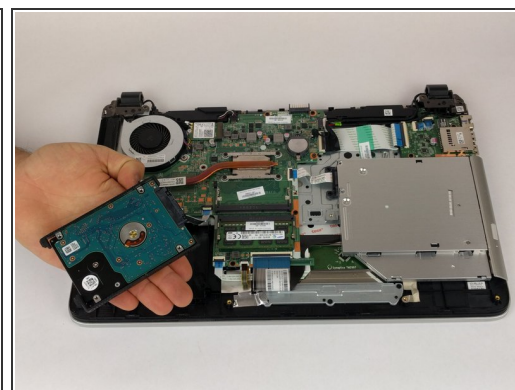
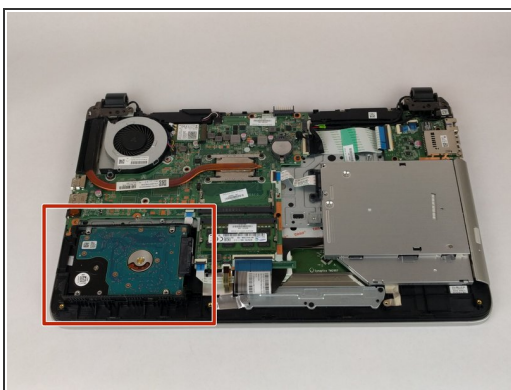
- Using a plastic opening tool, begin to pry edge of case away from the laptop. Work around the edges until all sides, except back, are open.

Step 8



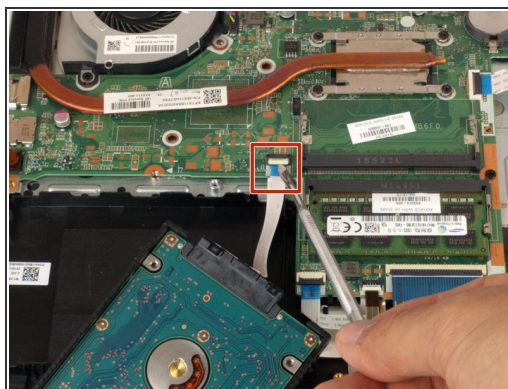
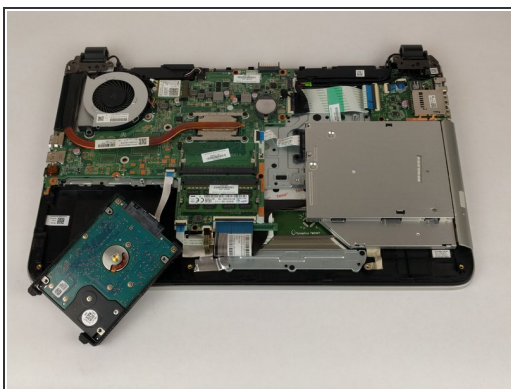
- On the back side of the laptop, where the battery is, there are 12 black plastic clips. Use a plastic opening tool and pry all of these clips, unlatching them from the case.
- Once clips are free, open the laptop. Rotating the case off, around the hinges, works best to remove the case.

Step 9 — Hard Drive



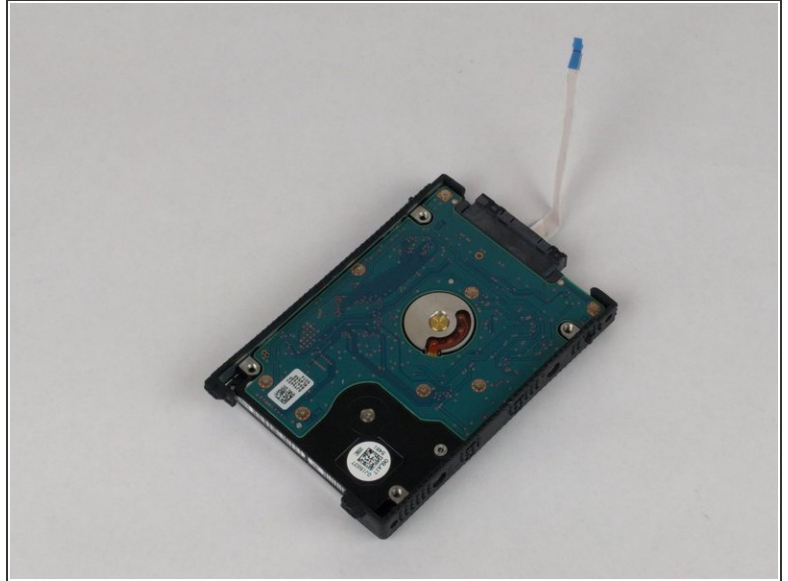
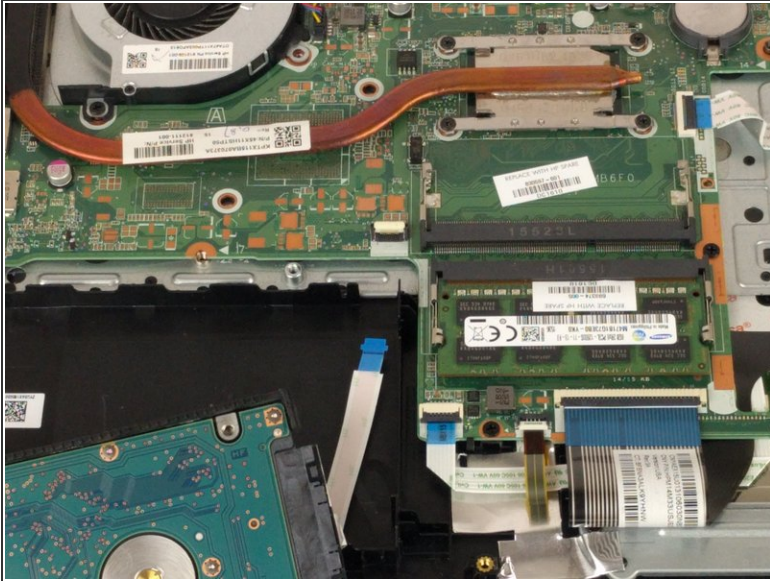
- Locate the hard drive and lift up to give better access to the connector.

Step 10



- Using a plastic opening tool or spudger, pry open the white tab to release connector.

Step 11



- Hard drive is good to go and can now be removed.

To reassemble your device, follow these instructions in reverse order.