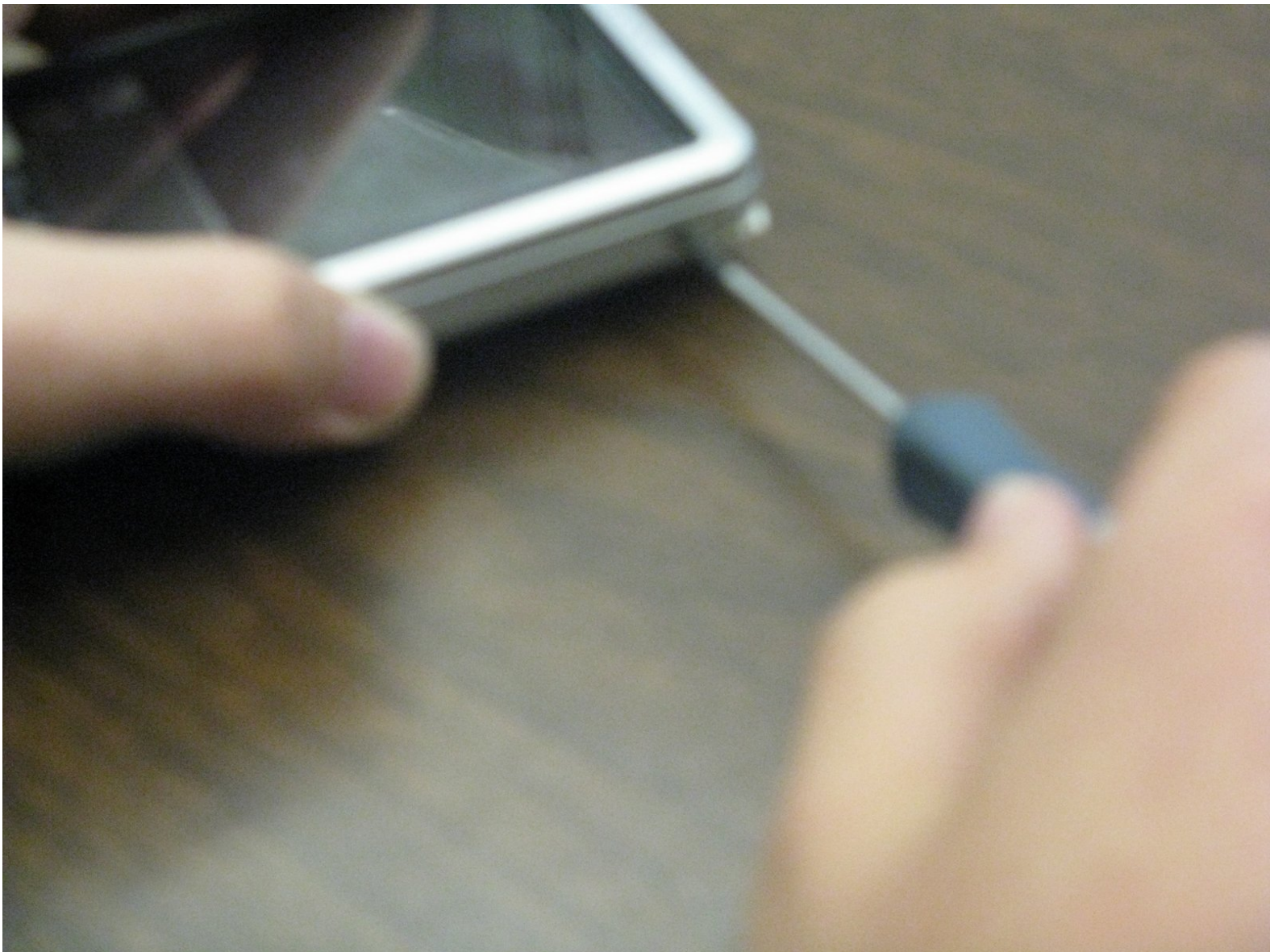




Disassembling Sony Clie PEG-SJ22 Outer Case

Written By: Samantha Taylor





TOOLS:

- [iFixit Opening Tools](#) (1)
 - [Phillips #00 Screwdriver](#) (1)
-

Step 1 — Outer Case



- 1. Unscrew the six screws on device. (2 screws on left side, 2 on right side, 2 on bottom)

Step 2



- 2. With an iPod opening tool, lift the front cover (face plate) from the device.

Step 3



- 3. Pull the screen out of the back case with iPod opening tool. The device should now be in three different parts.

To reassemble your device, follow these instructions in reverse order.