



Toshiba Satellite C55D-B5310 Keyboard Replacement

If your keyboard is inoperable, use this guide...

Written By: Christopher White



INTRODUCTION

If your keyboard is inoperable, use this guide to remove and replace the keyboard.



TOOLS:

- [Phillips #1 Screwdriver](#) (1)
 - [iFixit Opening Tool](#) (1)
 - [Magnetic Project Mat](#) (1)
-

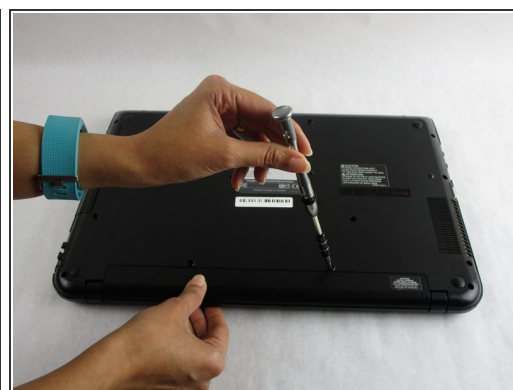
Step 1 — Keyboard



⚠ Turn off your device before starting.

- Flip the phone over so that the back camera is facing you.

Step 2



- Use a your hands to remove the backing of the phone.

Step 3



- Use your phillips screwdriver to begin removing all the accesible screws.

Step 4



- Now begin to remove the coverings above and below the middle plate with your hand.

Step 5



- use your hand or a tool to remove the tabbing on the metal plate covering the battery.

Step 6



- Remove the metal plate covering the battery.

Step 7



- Use your wedging tool to begin removeing the adhesive under the battery.

Step 8



- Remove these two screws with your phillips screw driver.

Step 9



- Open the two metal tabs

Step 10



- Flip the phone back over with the screen facing you.

Step 11



- Begin to use the wedging tool to remove the space bar off of the keyboard.

Step 12



- remove the screws on each end of the space bars vacant lcoation.

Step 13



- Grab the wedging tool and begin wedging the old keyboard.

Step 14



- begin wedging the back of the keyboard until free.

Step 15



- Begin deperating the keyboard from the backing.

Step 16



- grab your replacement keyboard and connect it to the backing of the old keyboard.

Step 17



- place the keyboard back onto the front of the phone

Step 18



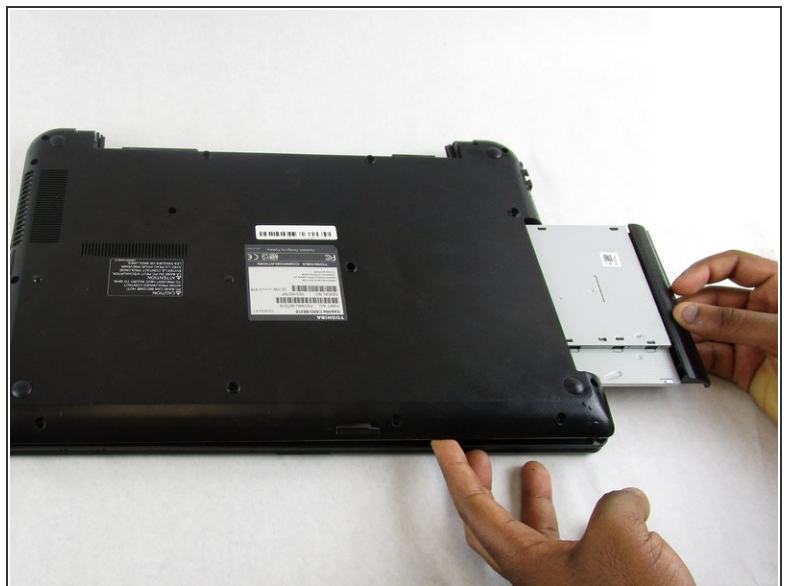
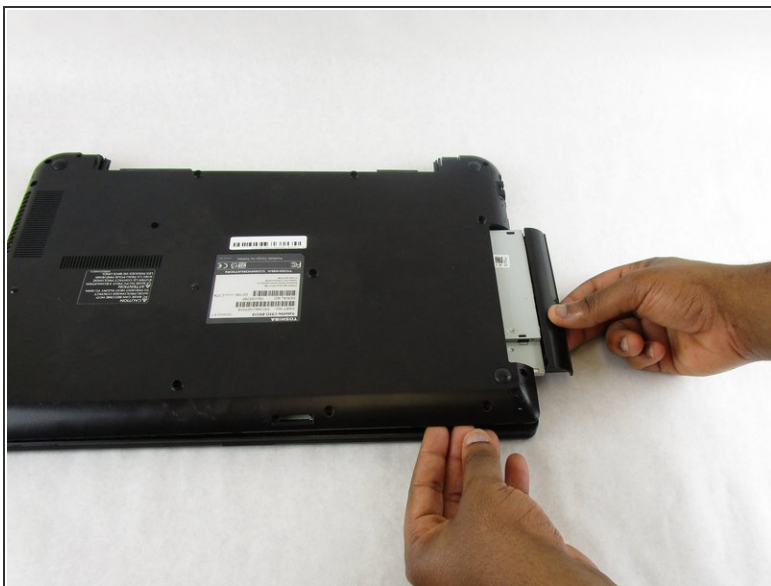
- once placed, hold the keyboard onto the phone while clicking the two metal plates back down to connect the keyboard.

Step 19 — CD/DVD Drive



- Use a Phillips #1 screwdriver (PH1 bit) to remove the single 7 mm screw that secures the CD/DVD drive.

Step 20



- Slide the CD/DVD Drive out of the laptop.

Step 21 — Fan



- Remove the remaining thirteen 7 mm Phillips screws holding the back cover using the PH1 bit and Magnetic Driver.

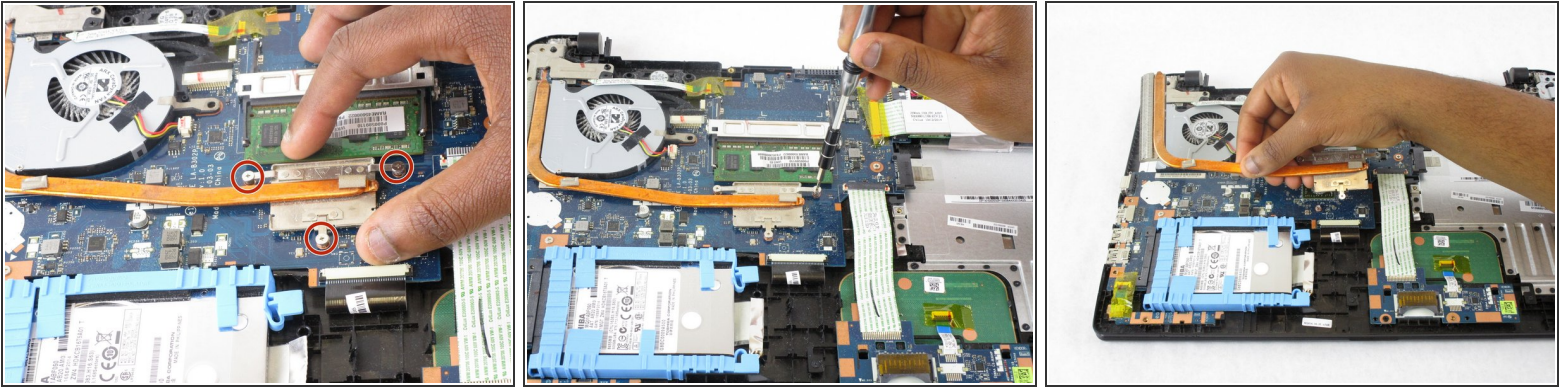
Step 22



- Using the plastic opening tools, separate the back cover from the laptop.
- ⓘ It is recommended that you start from a corner and run the tool along the edge of the cover.

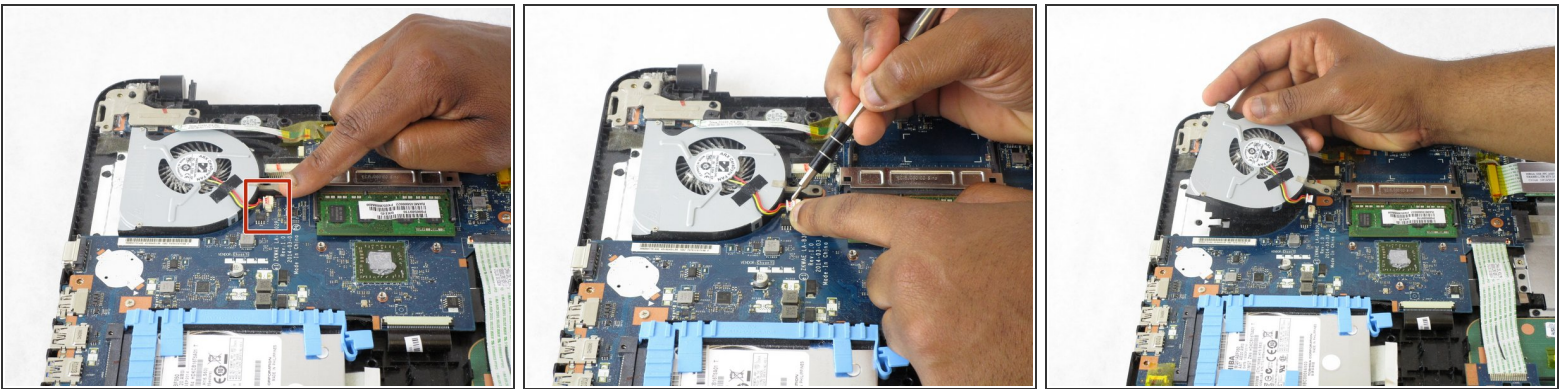
⚠ Be careful not to bend or crack the plastic back cover.

Step 23



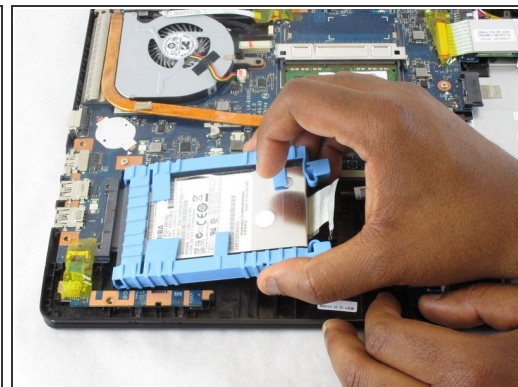
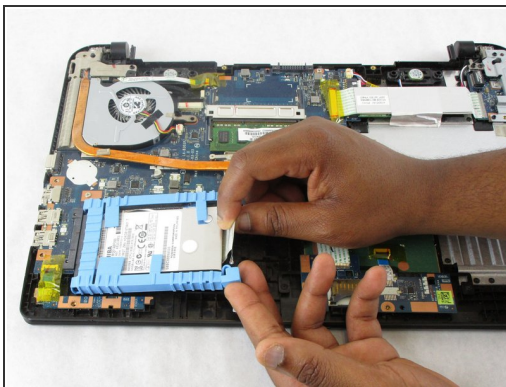
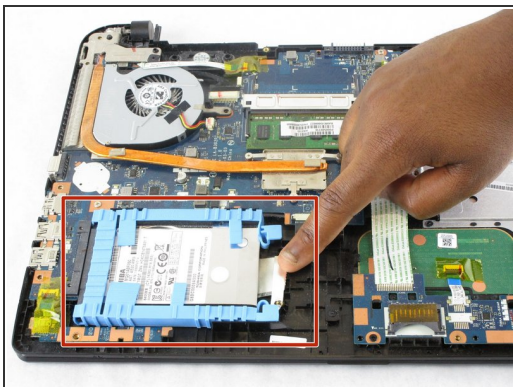
- Remove the three 3 mm Phillips screws holding the fan cable in place using the PH1 bit and Magnetic Driver.
- Lift the fan cable connector from the fan.

Step 24



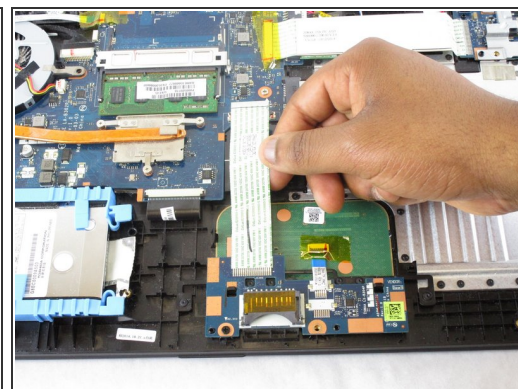
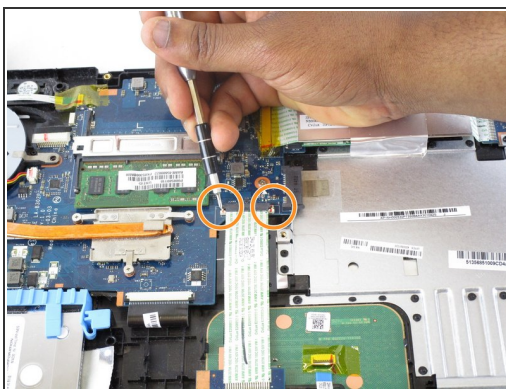
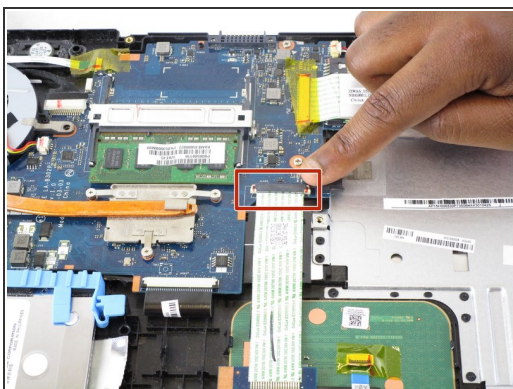
- Remove the fan from the plug by releasing the clamps located on each side of the socket.
- Slide the connector out of the socket.
- Lift the computer fan from the motherboard.

Step 25 — Keyboard



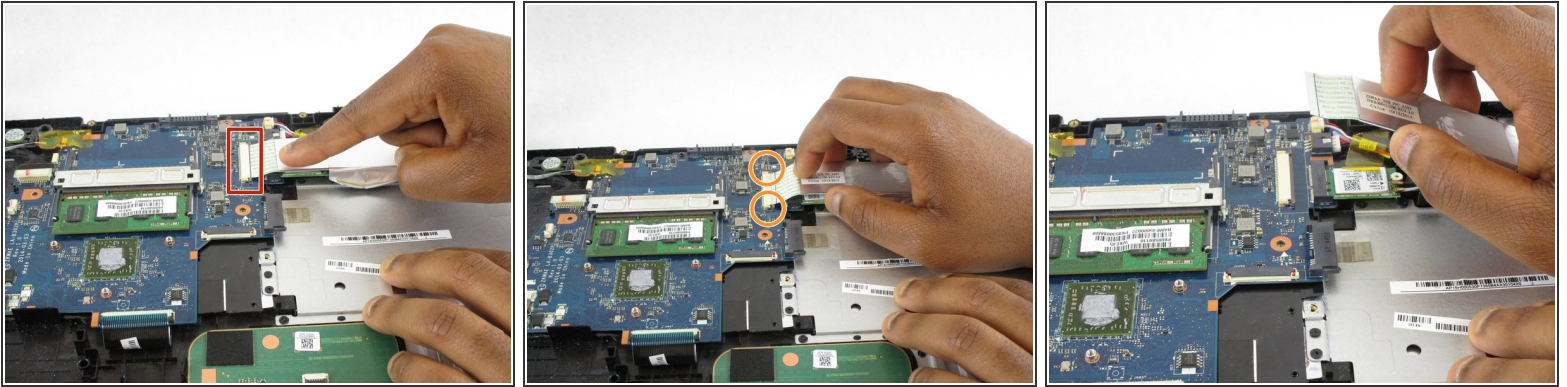
- Using the ribbon beneath the hard drive lift it upwards and pull the hard drive out.

Step 26



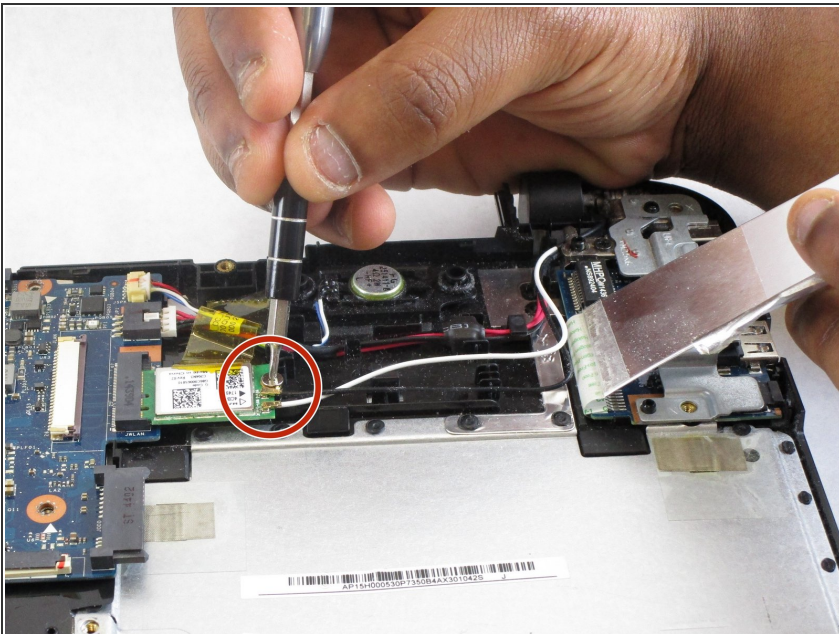
- The white touchpad ribbon must be disconnected from the motherboard connection socket.
- Release the two clamps holding the ribbon in place.
- Slide the ribbon from the motherboard connection socket.

Step 27



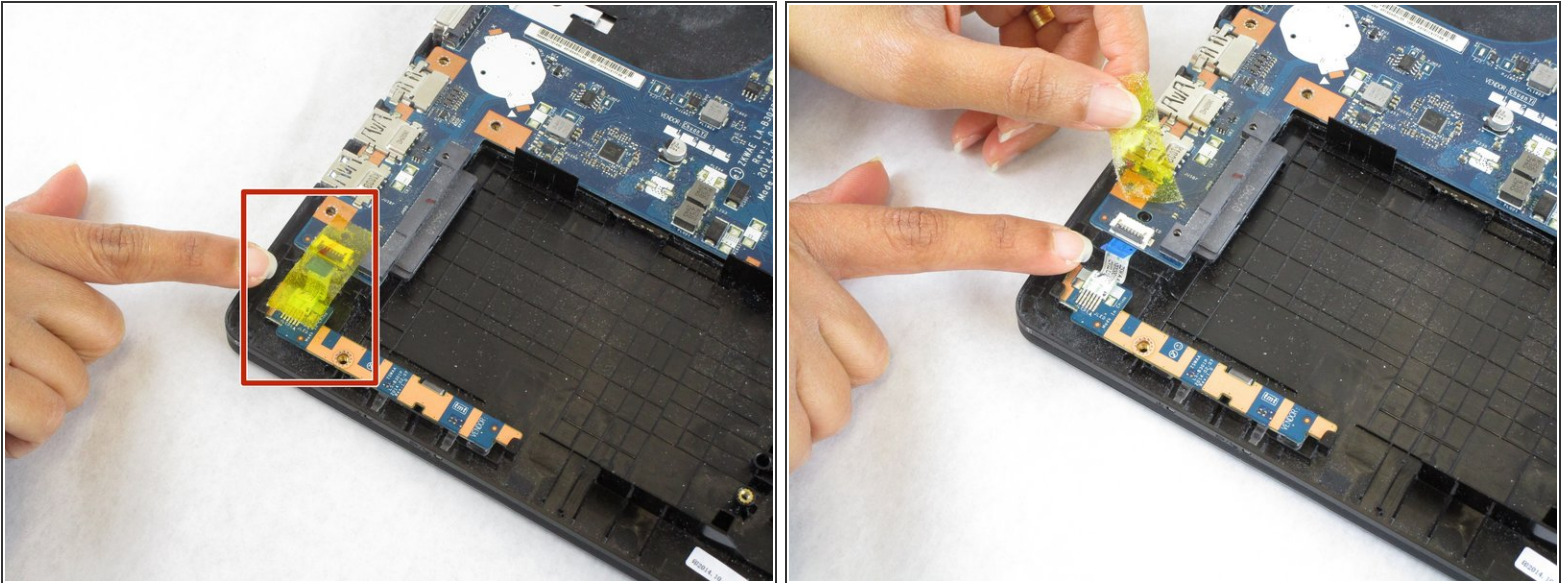
- Remove the white ribbon connecting the USB ports to the motherboard.
- Release the two holding clamps.
- Slide the ribbon out of the motherboard holding socket.

Step 28



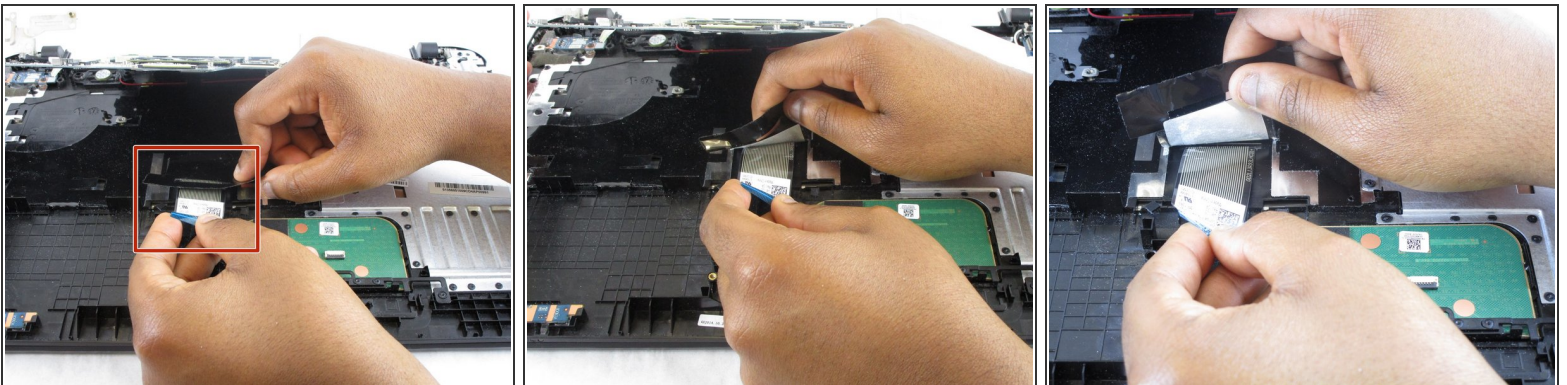
- Remove the 7 mm Phillips screw holding the USB Driver to the motherboard using the PH1 bit and Magnetic Driver.

Step 29



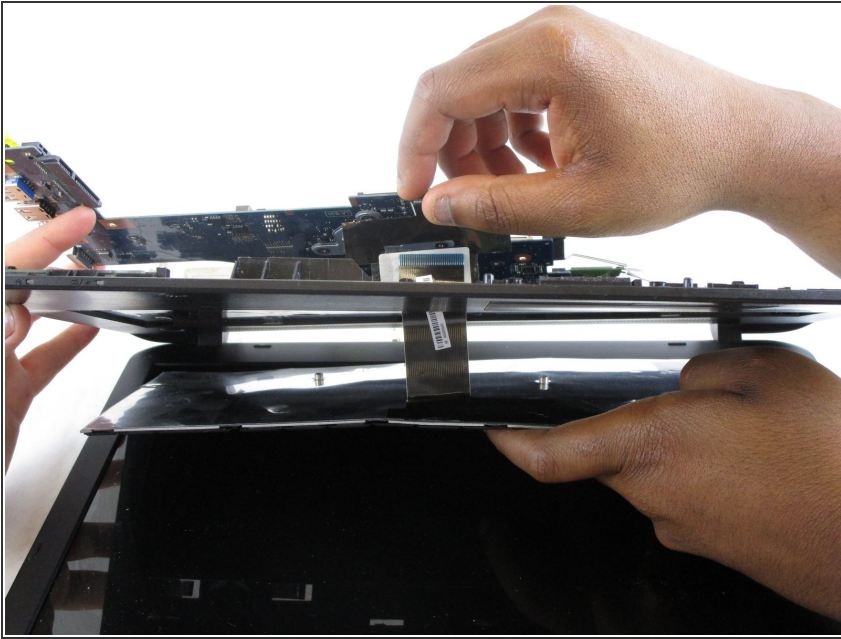
- Remove the blue ribbon connecting the hard drive hardware to the motherboard by first lifting the yellow protective tape.
- Slide the blue ribbon from its connection socket.

Step 30



- Carefully separate the securing tape from the ribbon attaching the keyboard to the motherboard.
- i** At this point the keyboard will be free from the motherboard.

Step 31



- Slide the keyboard ribbon through its holding slot, completely releasing it from the laptop.

To reassemble your device, follow these instructions in reverse order.