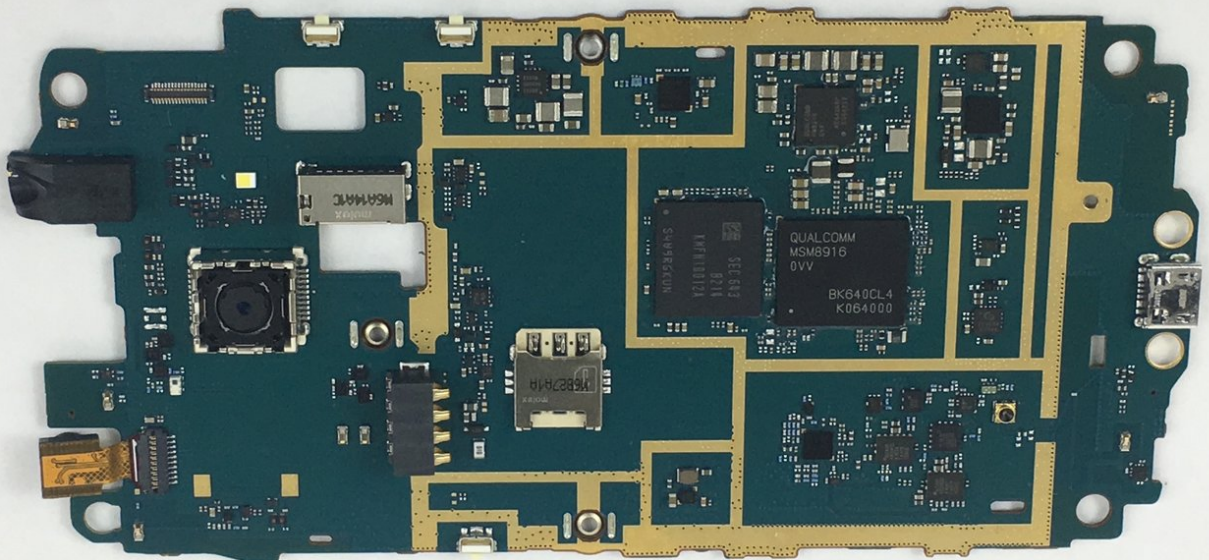




# Samsung Galaxy Luna Motherboard Replacement

Use this guide to replace the motherboard.

Written By: Jahina Al Balushi



---

# INTRODUCTION

Use this guide to replace the motherboard.



## TOOLS:

- [iFixit Opening Tools](#) (1)
  - [Phillips #000 Screwdriver](#) (1)
-

## Step 1 — SIM Card



- Using a plastic opening tool, pry the divot to the left of the camera to take off the rear case.

## Step 2



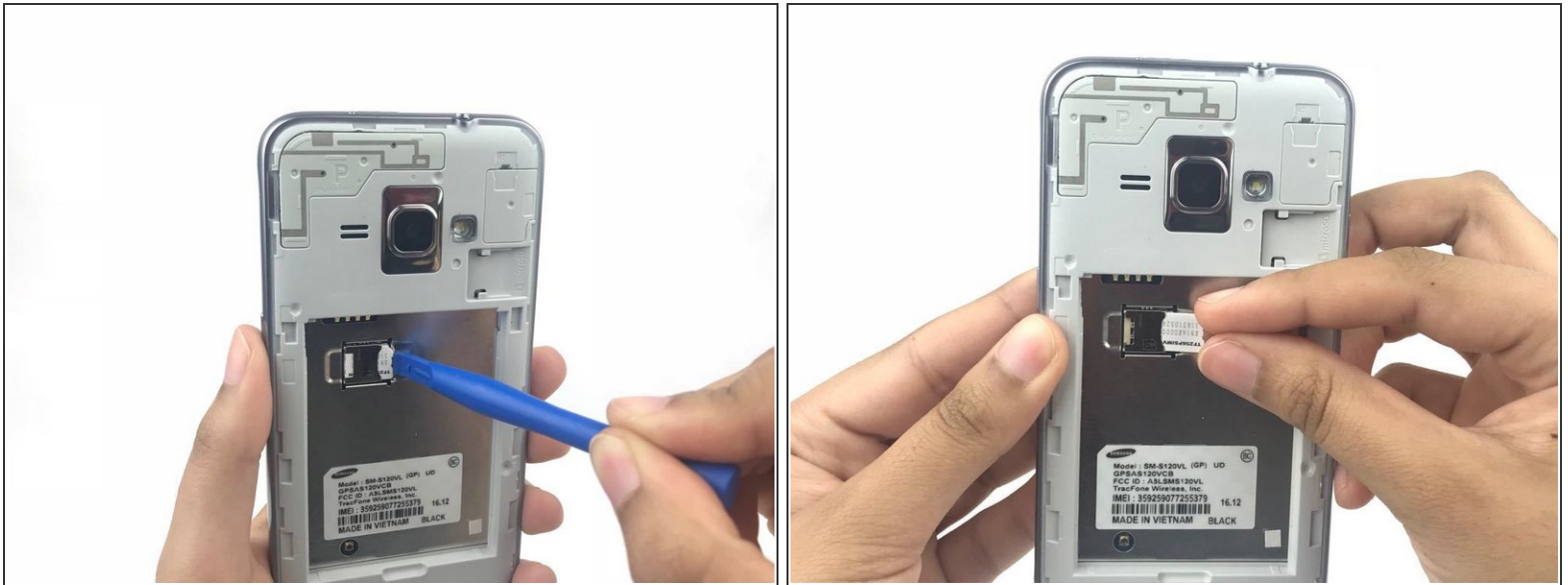
- Pull the corner nearest to the divot to remove the case from the phone.

## Step 3



- Place your fingernail or a prying tool at the bottom of the battery and pry it out of the case.

## Step 4



- By using your finger or a plastic opening tool, push the SIM card further into its container until a click is heard.
  - Once the click is heard grab the SIM card and slide it out of the container.
  - Remove the SIM card completely.
- ✦ During reassembly, slide the new SIM card into the slot until a click is heard.



## Step 5 — Motherboard



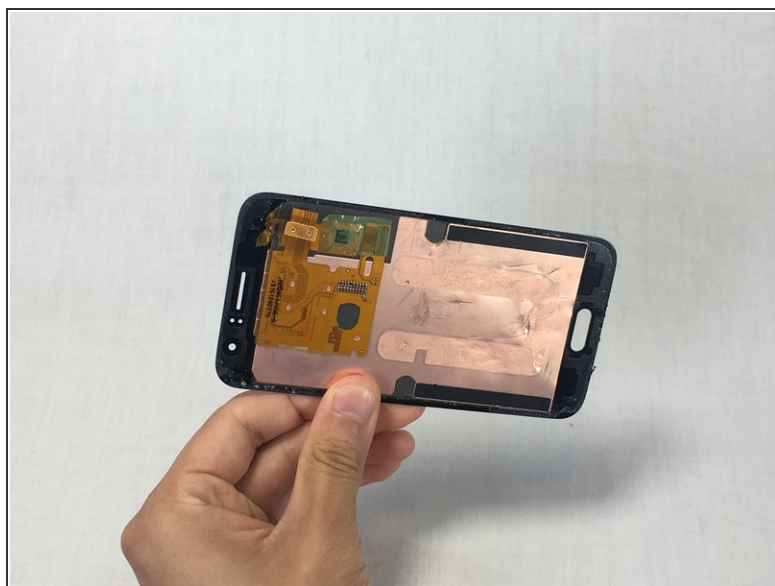
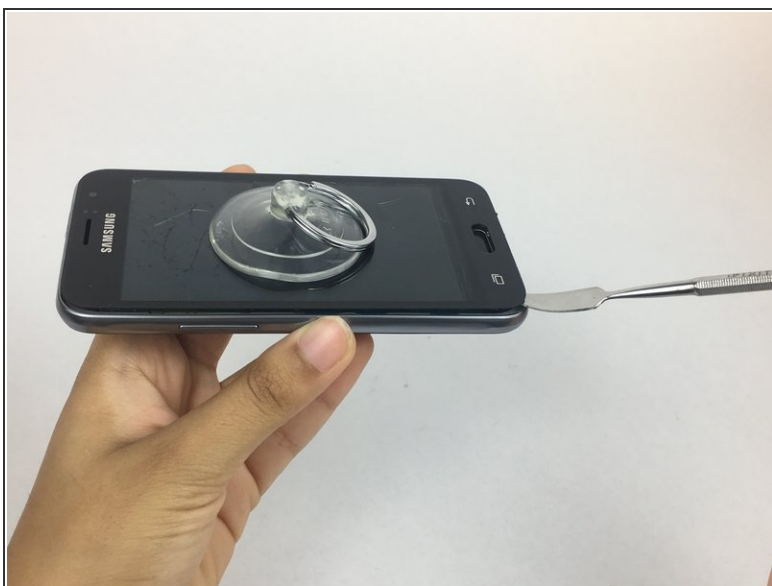
- Use a plastic opening tool, or your fingernail to take off the rear case by prying the divot to the left of the camera.
- Lift the rear case by the corner nearest the divot and remove it from the phone.
- Using an opening tool, take off the cover for the digitizer connector.
- detach the connector with a tweezer or a plastic spudger.

## Step 6



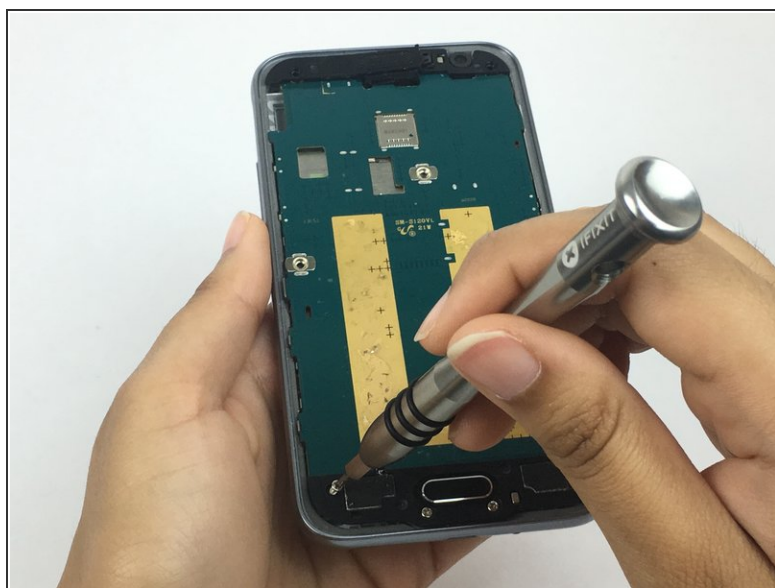
- Place small suction cup on the center of screen and press firmly.
- Hold the back of the phone and pull on the suction cup gently until the screen begins to bend.

## Step 7



- Insert the small metal spudger into an opening on the phone and pry off the screen.
- ⚠ Avoid tearing any exposed circuits as the screen is being removed.
- Make sure the screen is completely detached from the motherboard before removing it.

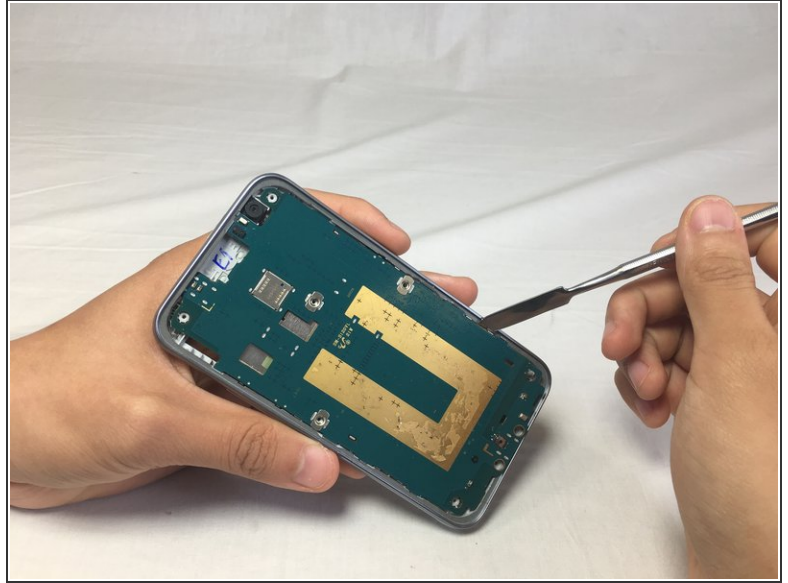
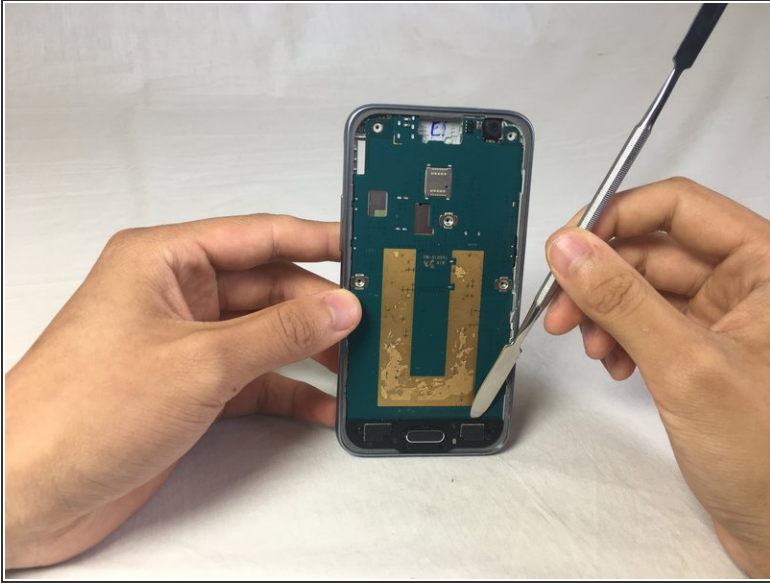
## Step 8



- Using a Philips PH000 screwdriver, remove the nine 3 mm screws.

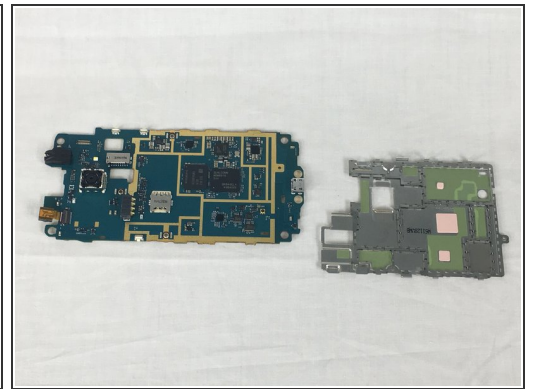
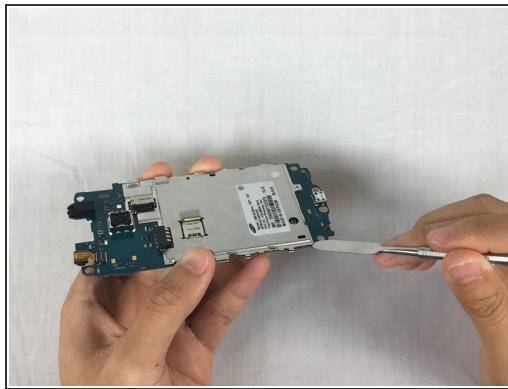
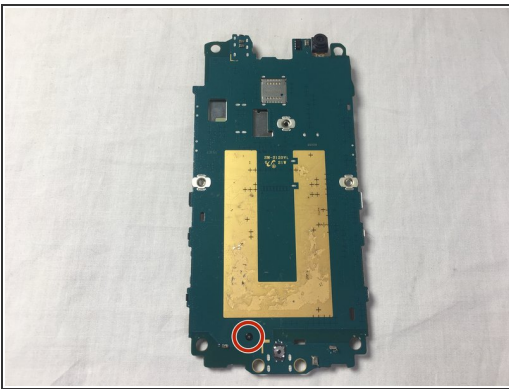


## Step 9



- Using a metal spudger, gently pry the button frame off the motherboard.
  - Do the same for the motherboard.
- ⚠️ Avoid scraping the circuitry on the motherboard, as they can be very fragile.

## Step 10



- Using a Philips PH000 screwdriver, remove the black screw.
  - Use the metal spudger to pry open the motherboard cover.
- ⚠️ Be careful when prying the cover of the motherboard. avoid scratching the motherboard circuitry.



To reassemble your device, follow these instructions in reverse order.