



Lenovo IdeaPad Flex 4-1130 Wi-Fi Card Replacement

Replacing the Wi-Fi card on the Lenovo Ideapad Flex4-1130.

Written By: Adrian Miranda



INTRODUCTION

A Wi-Fi card replacement is a quick and simple task. If you are experiencing slow or intermittent internet connection a Wi-Fi card replacement might be in order.



TOOLS:

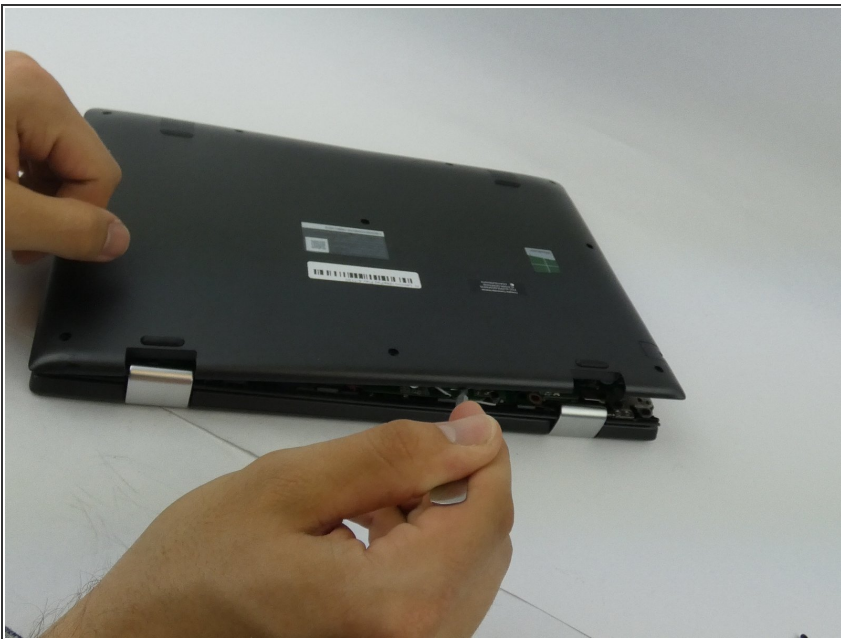
- [Phillips #0 Screwdriver](#) (1)
 - [Spudger](#) (1)
-

Step 1 — Battery



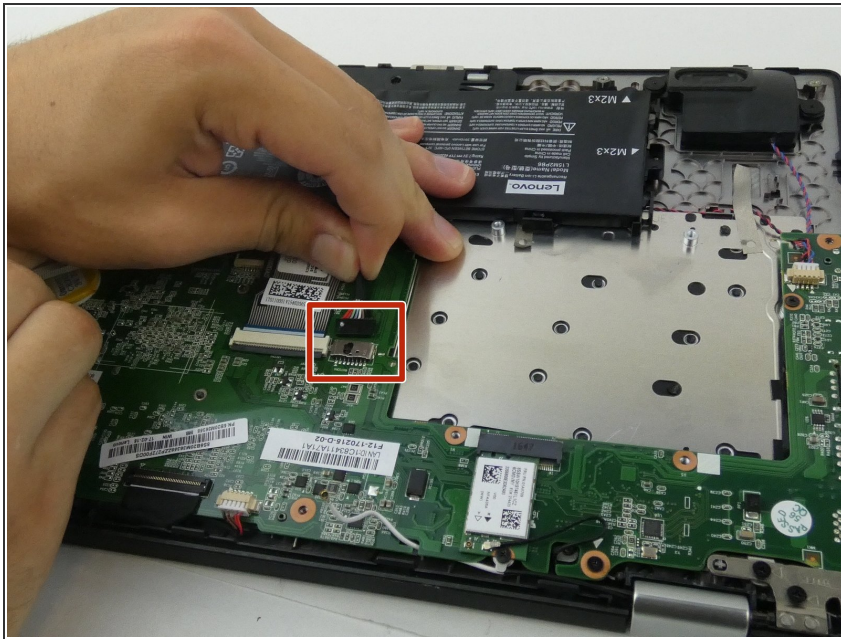
- ❗ Power off your Lenovo Ideapad Flex4-1130 before beginning disassembly.
- Remove the ten 4mm screws from the back panel.

Step 2



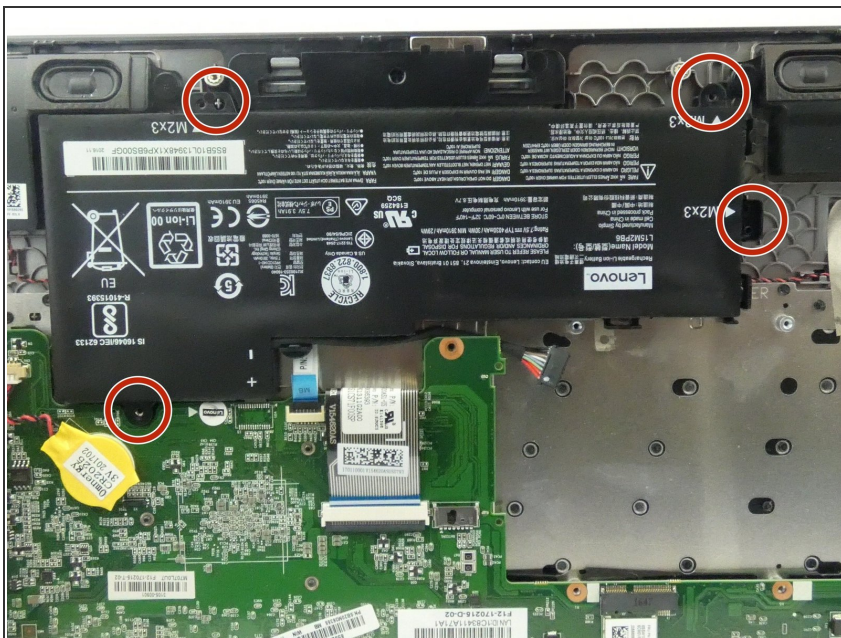
- Insert the spudger into the groove work your way around the laptop to separate the bottom from the case.
- ⚠ Do not insert the spudger too deep! This could potentially damage a device part.

Step 3



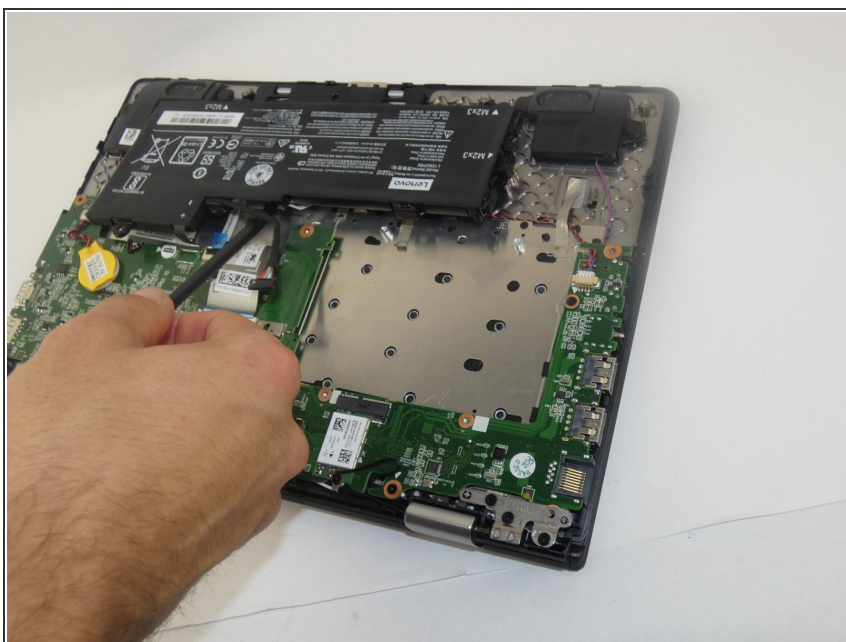
- Remove the connector attaching the battery to the motherboard.

Step 4



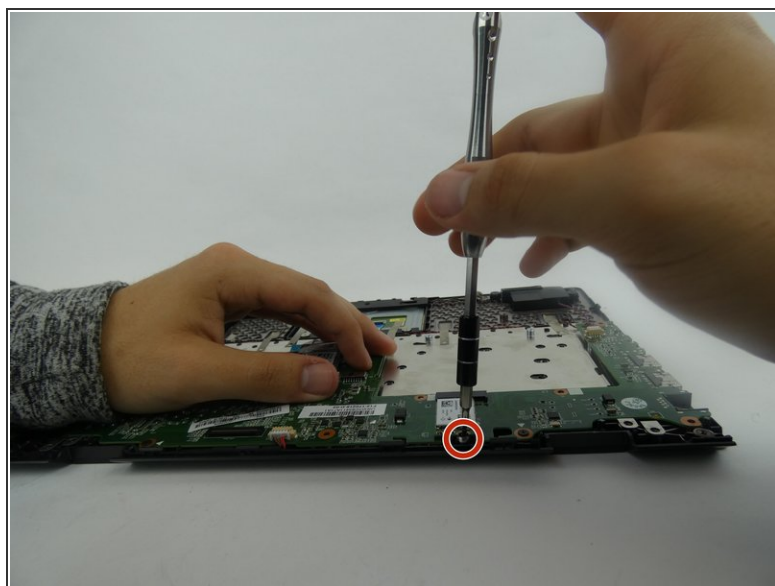
- Remove the four 4mm screws on the battery.

Step 5



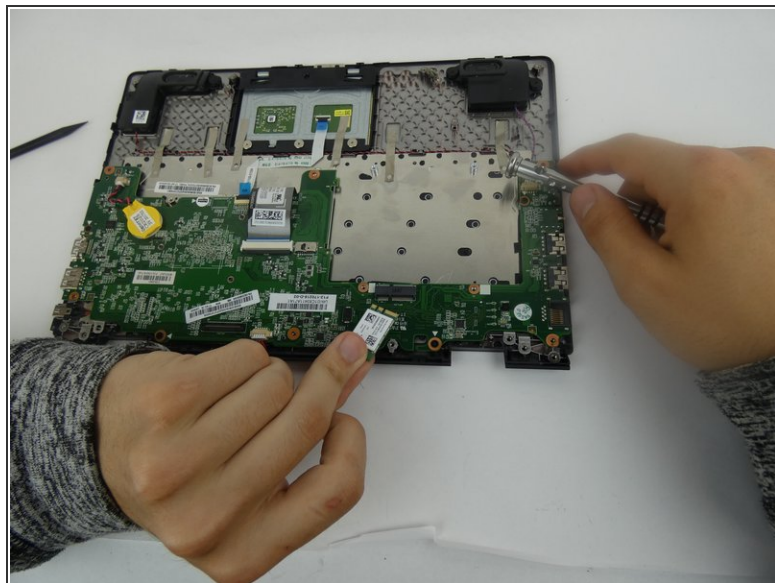
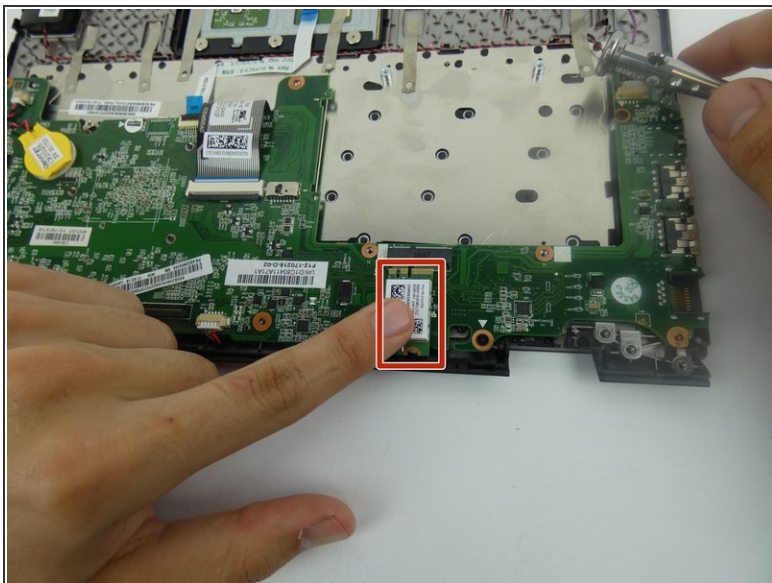
- Lift the battery with a spudger and remove.

Step 6 — Wi-Fi Card



- Remove one 5mm screw.

Step 7



- Remove the Wi-Fi card from the motherboard socket.

To reassemble your device, follow these instructions in reverse order.