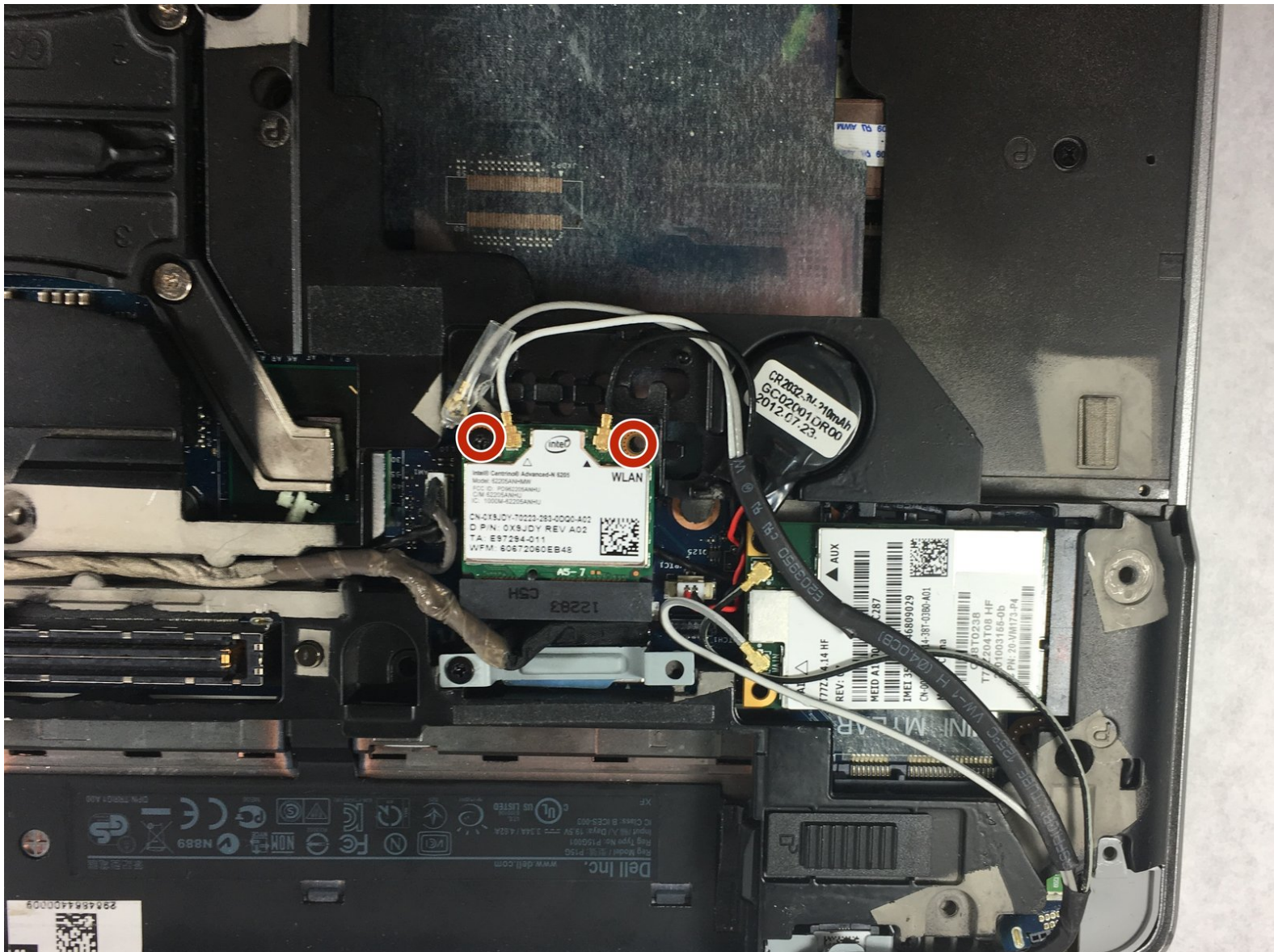




# Dell Latitude E6420 Wireless Card Replacement

How to replace a Dell Latitude E6420 wireless card.

Written By: Madysen Eames



---

## INTRODUCTION

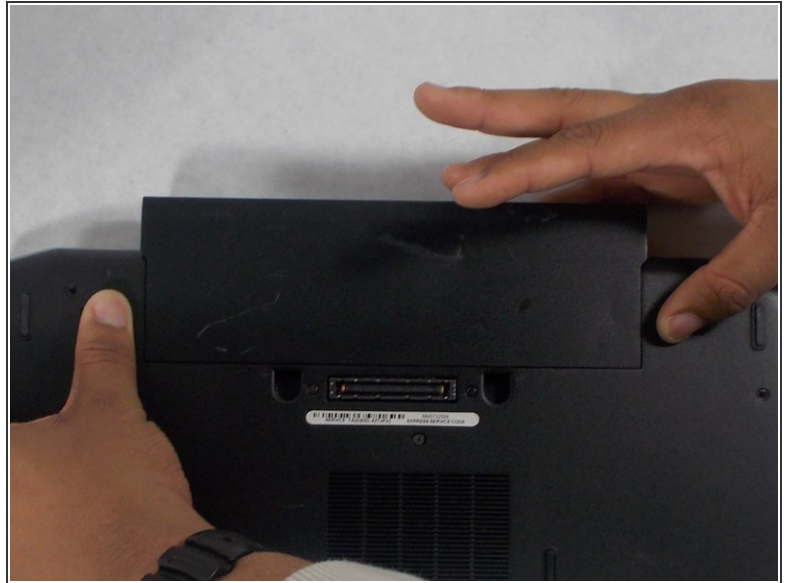
A faulty wireless card can affect wireless connection. This guide will show the user how to replace the wireless card.

---

### TOOLS:

- [Phillips #00 Screwdriver](#) (1)
  - [Phillips #1 Screwdriver](#) (1)
  - [JIS #0 Screwdriver](#) (1)
-

## Step 1 — Battery



- Push the tabs on the left and right of the battery out towards the edge of the case.

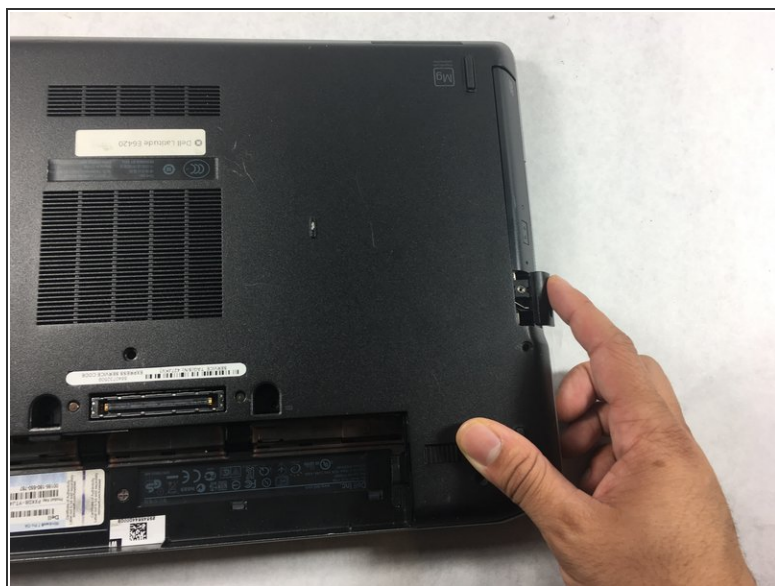
## Step 2



- While still pushing in the tabs, using your pinky finger, lift the battery out of the laptop.



### Step 3 — CD/DVD Drive




- Push the button in on the CD/DVD drive to eject the drive.

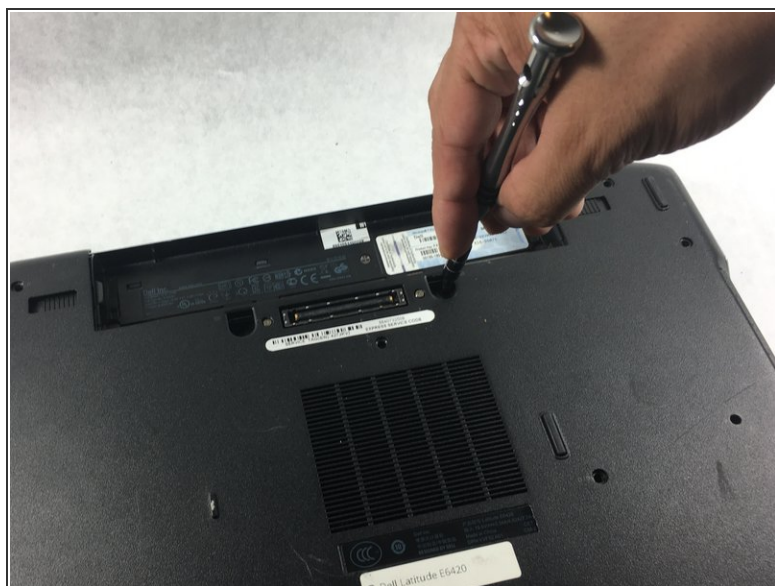
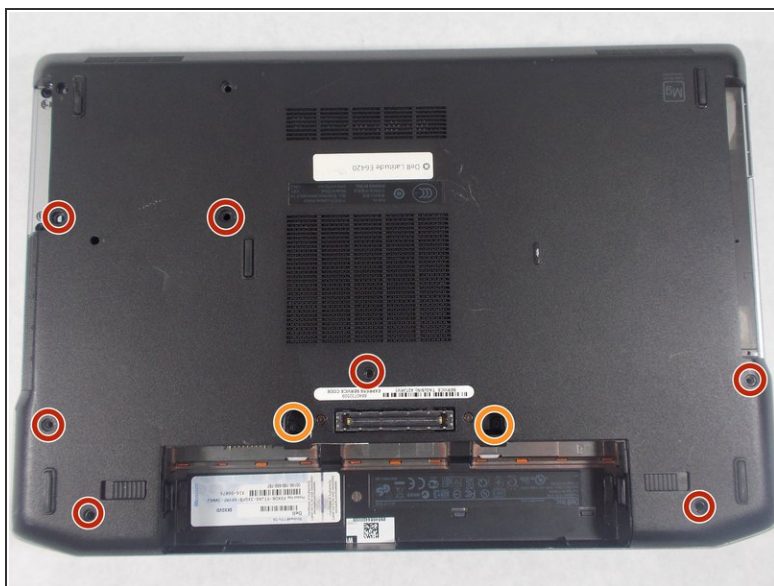
### Step 4



- Slide the drive out of the laptop.

 When removing the drive, keep it flat to prevent damage to anything inside the laptop.

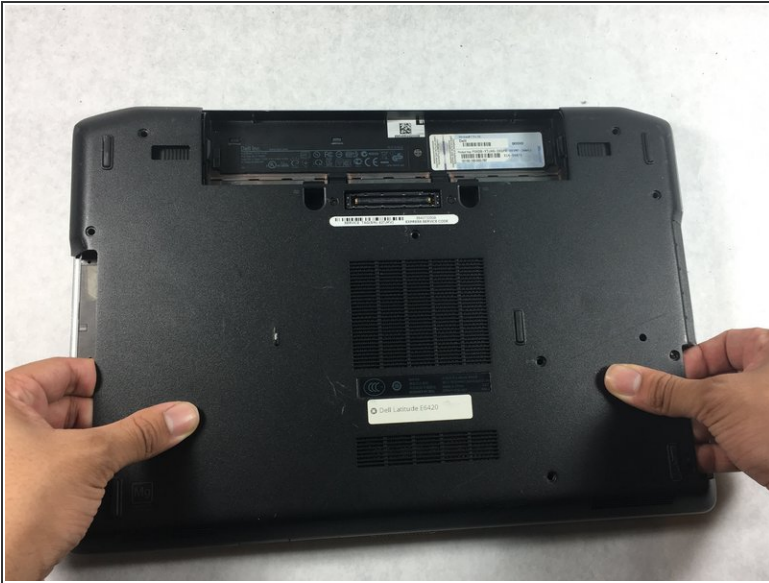
## Step 5 — Backplate



- Using the screwdriver, remove seven 4mm Phillips #1 screws from the bottom of the laptop.
- Using the screwdriver, remove two 9mm Phillips #00 screws from the bottom of the laptop.



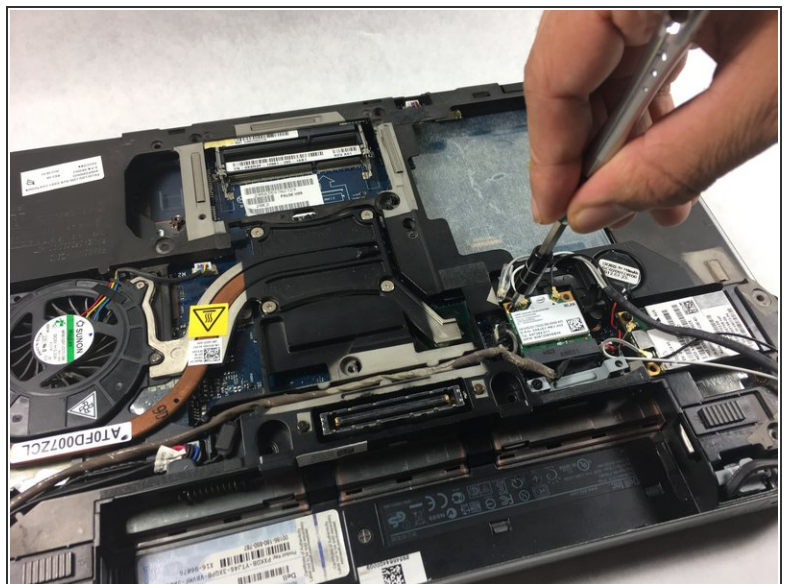
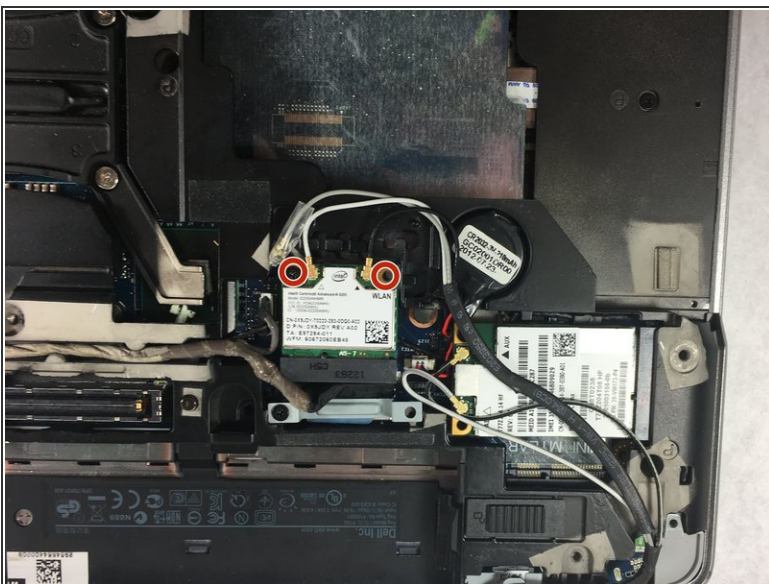
## Step 6



- Gently lift the back plate off of the laptop making sure all of the tabs on the inside perimeter of the back plate are unhooked before lifting.

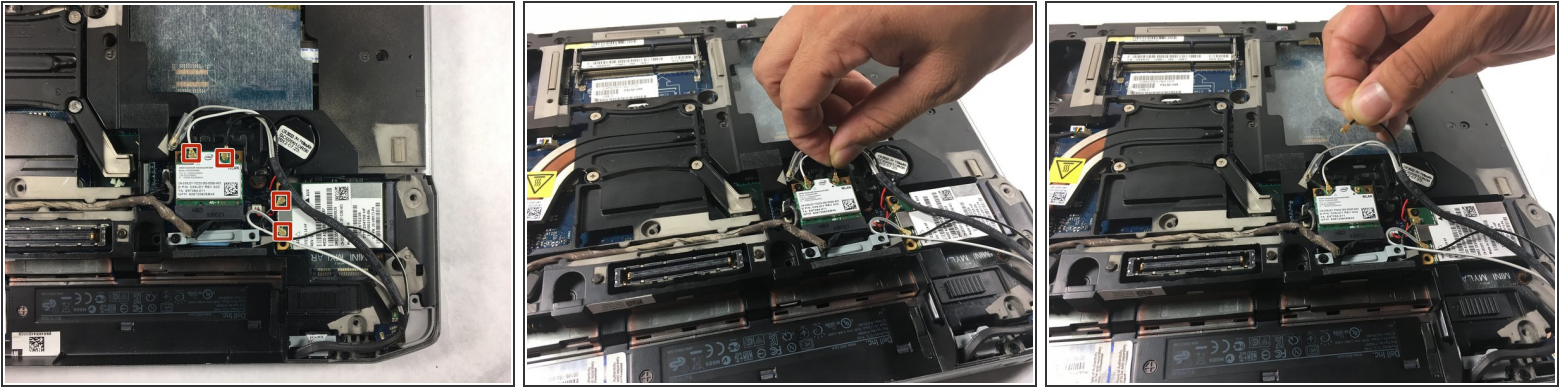
⚠ Be careful when removing the backplate. Lifting the backplate while the tabs are still hooked in will result in broken tabs.

## Step 7 — Wireless Card



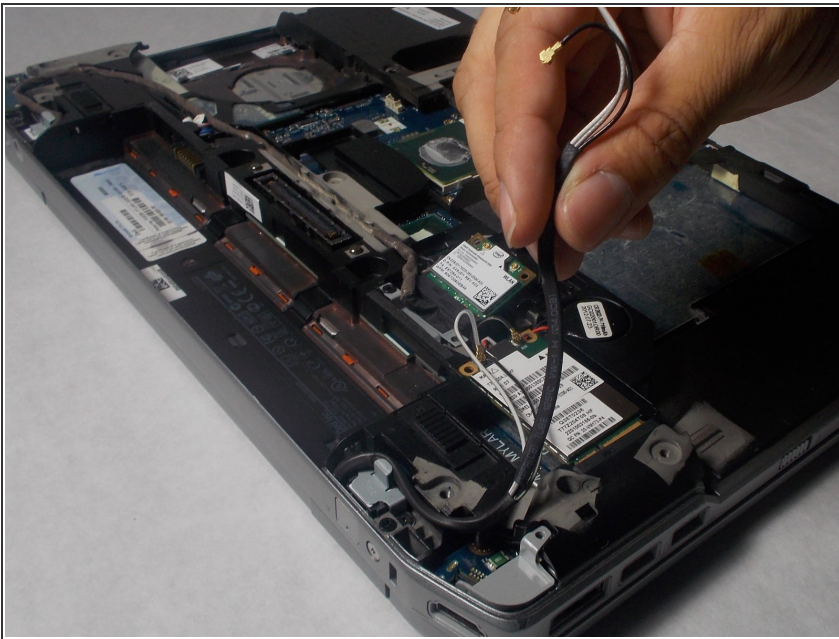
- Using the screwdriver, remove two 4mm JIS #0 screws.

## Step 8



- Disconnect 4 wires by pulling upward.
- ⚠ Gently remove the wires to prevent damaging them.

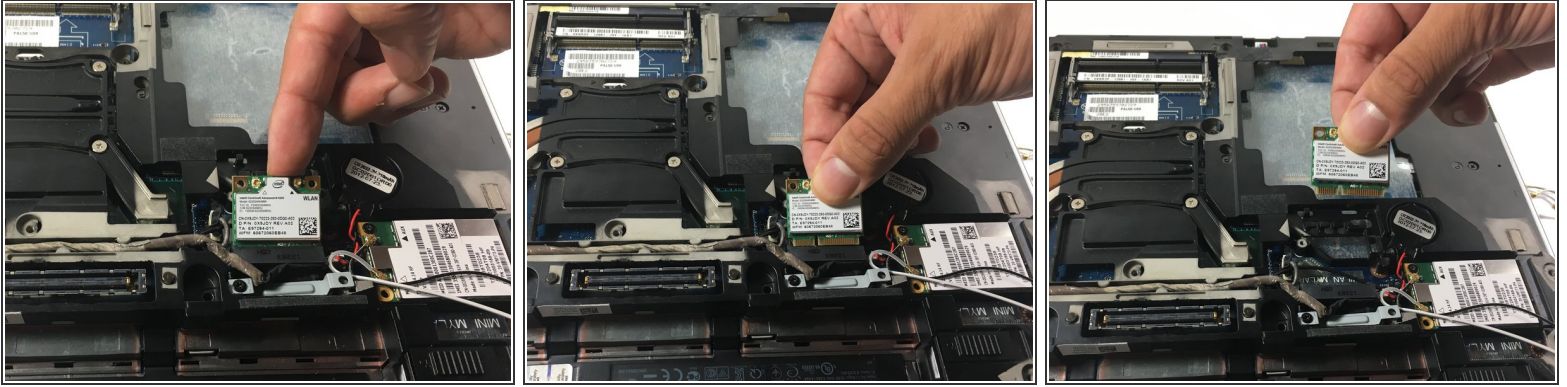
## Step 9



- Lift the wiring harness out of the way.



## Step 10



- The card will lift up, remove the card by pulling the lifted edge away from you.

To reassemble your device, follow these instructions in reverse order.