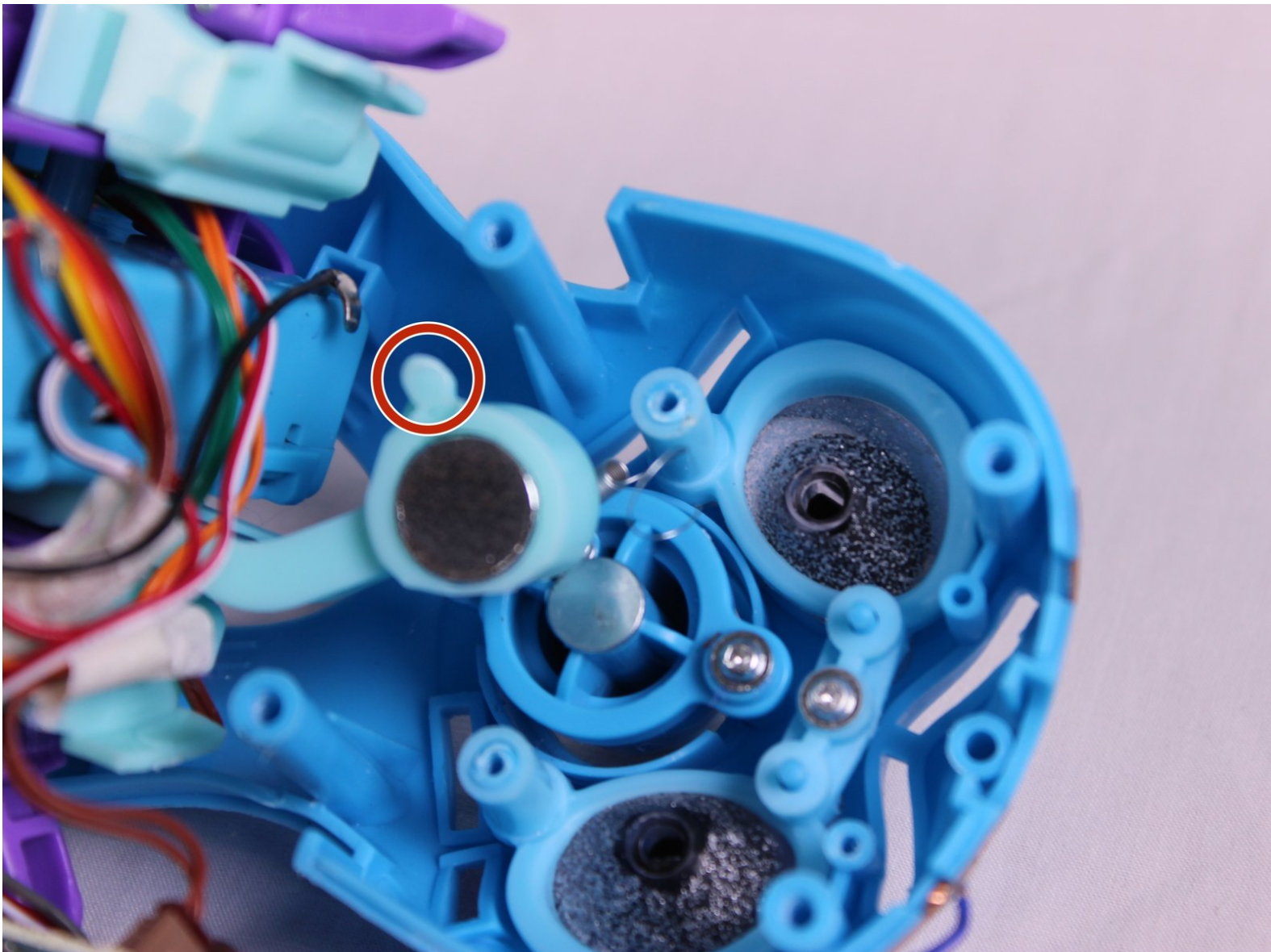




# Spin Master Hatchimal Draggie Nose Replacement

In this guide the spring that makes the nose automatically pop out is the assembly piece that will be replaced.

Written By: Hector Lopez



---

## INTRODUCTION

This guide will demonstrate how to properly replace the nose spring for the Hatchimal Draggie. The nose spring can be accessed by first removing the wings and fur .

---

### TOOLS:

- [iFixit Opening Tools](#) (1)
  - [Utility Scissors](#) (1)
  - [Spudger](#) (1)
  - [iFixit Angled Tweezers](#) (1)
  - [Phillips #00 Screwdriver](#) (1)
-

## Step 1 — Plastic Wing Replacement



- lay the Hatchimal on its side.

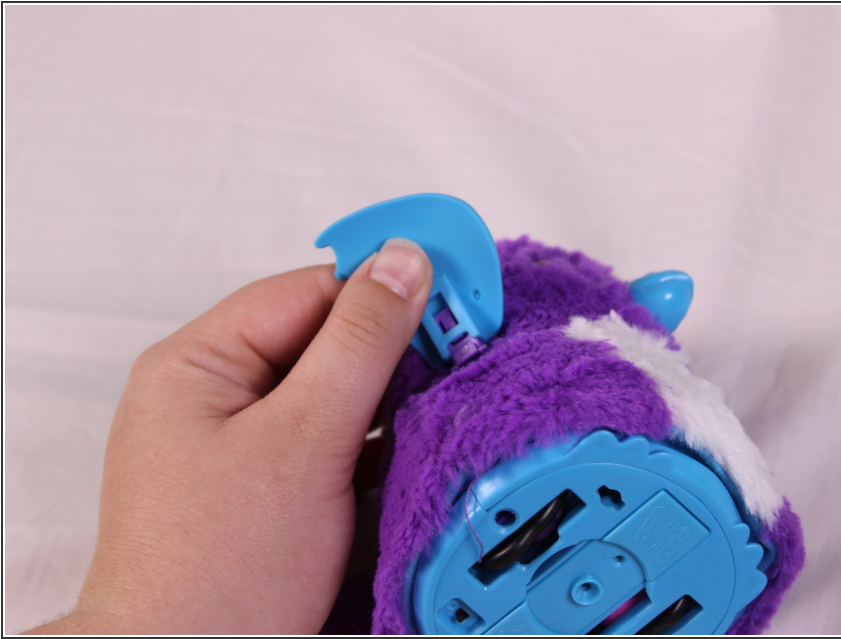
## Step 2



- Using the plastic opening tool, push in on the purple clip.

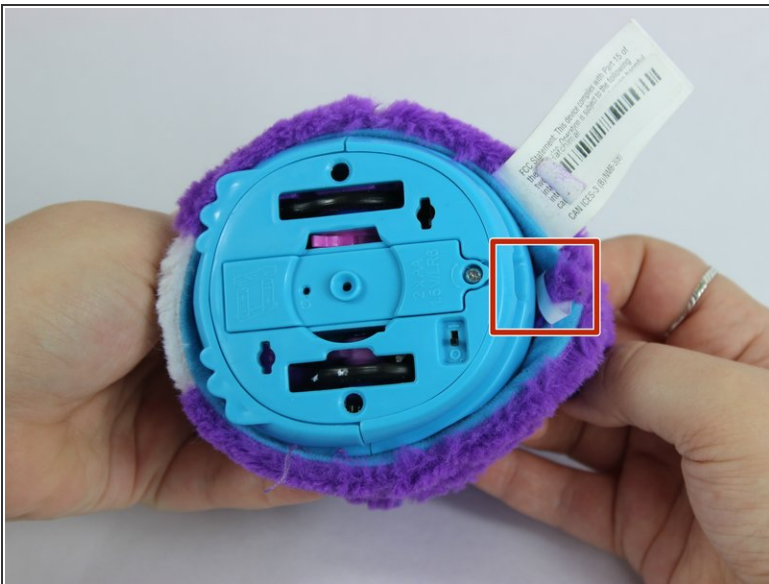


### Step 3



- Pull the wing off of the hatchimal.
- ⓘ The wing should come off with little resistance.

### Step 4 — Fur Replacement



- Cut the fur retaining zip-tie with a pair of scissors.

## Step 5



- Lift the fur up until it can't go further.

## Step 6



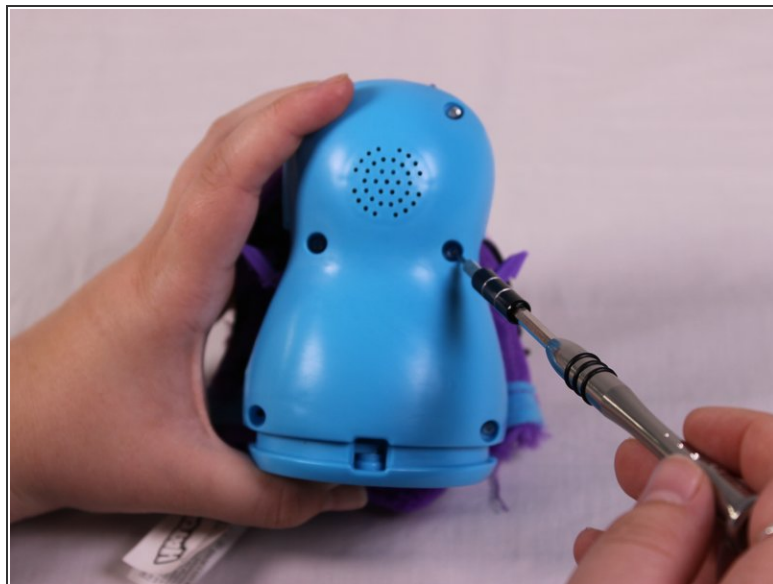
- Use the spudger tool to push up on the black clip to free it.
- Pull the clip out.

## Step 7



- Lift fur up to reveal the next set of clips.
- Insert a spudger to push up on the black clip to free it.
- Pull out the clip.

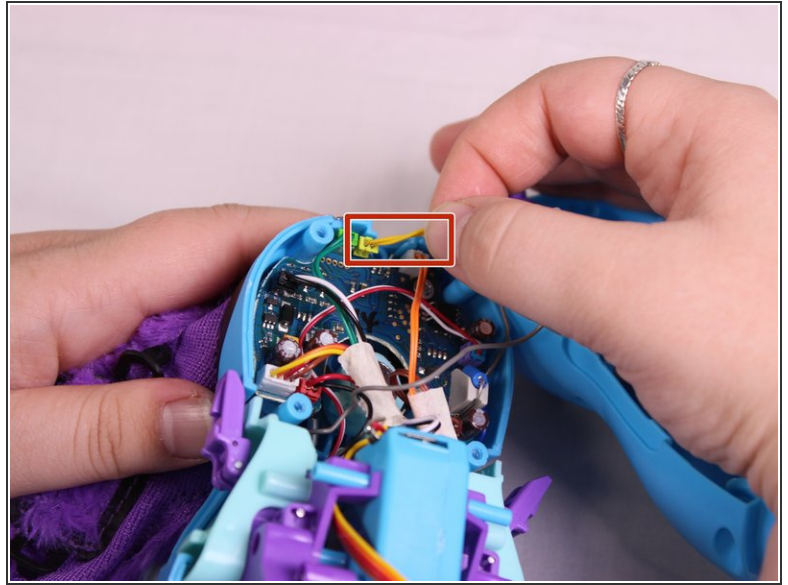
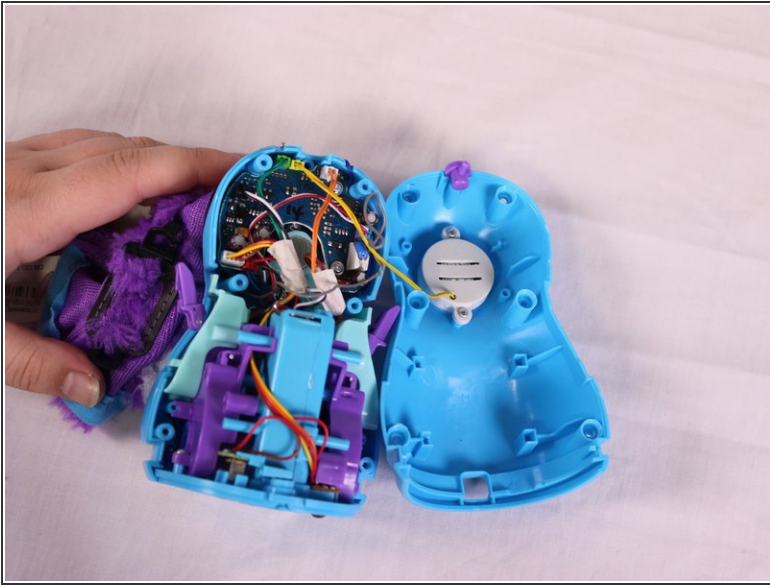
## Step 8



- Lift the fur up and over the Hatchimals Head.
- Remove the six 12mm Phillips #00 screws from then body.

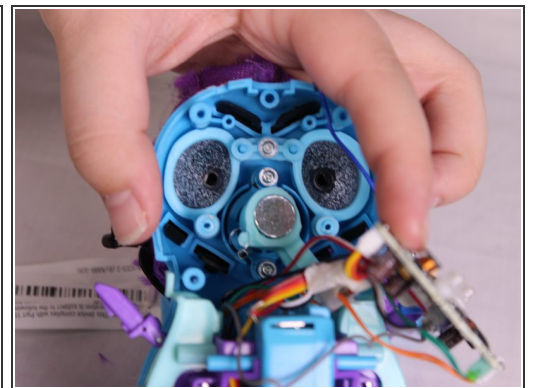
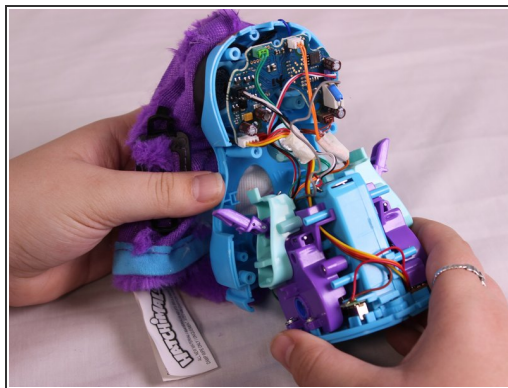
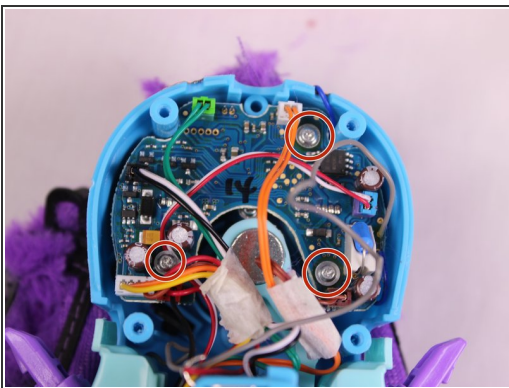


## Step 9



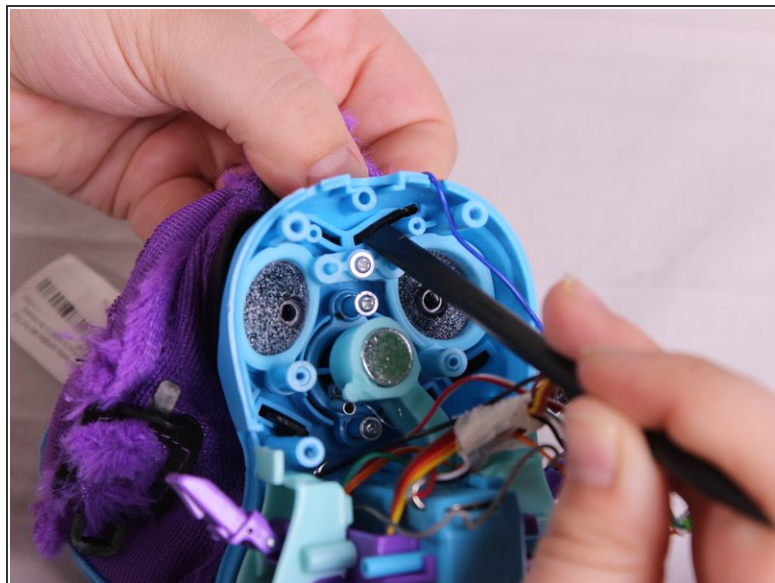
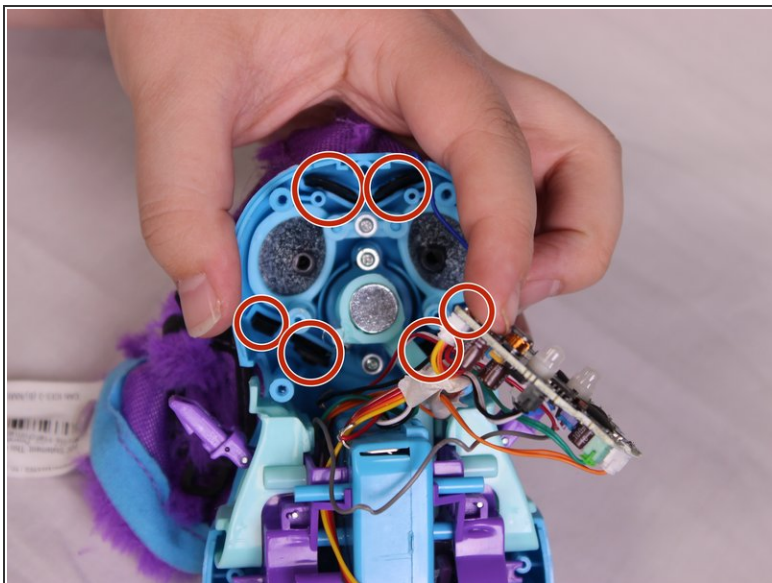
- Pull the casing apart.
- Remove the yellow speaker cable.

## Step 10



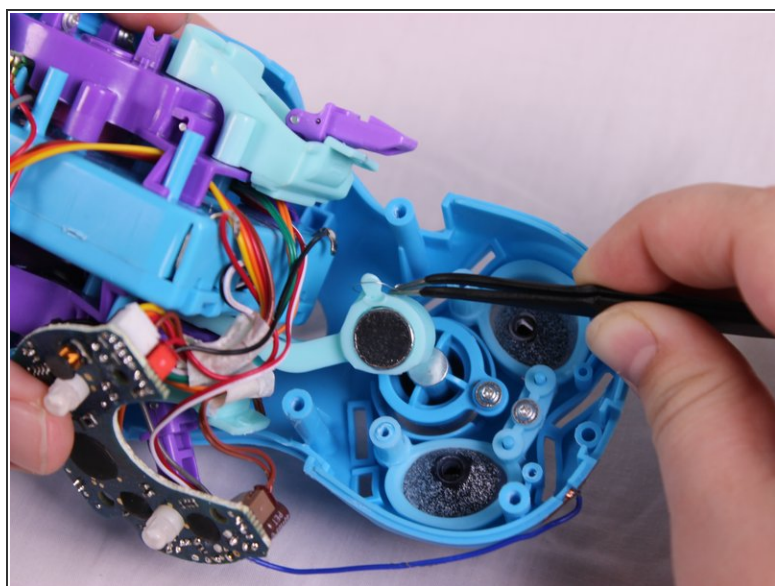
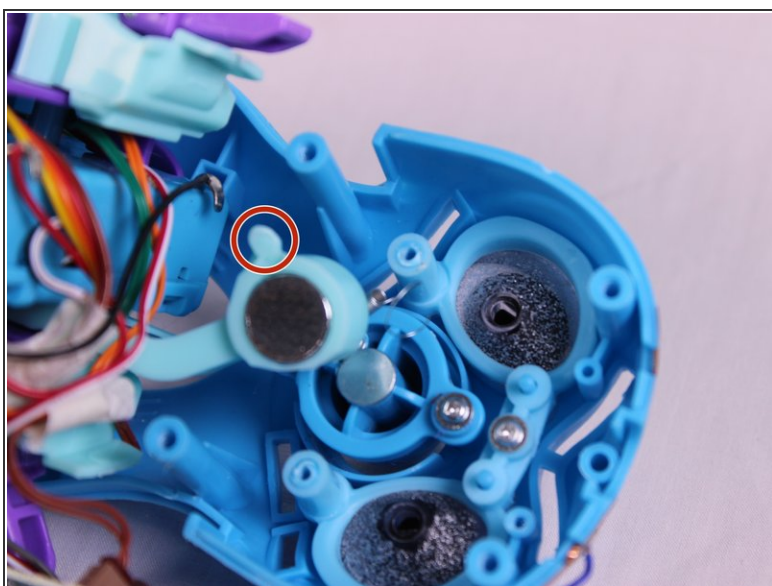
- Remove the three 7mm Phillips #00 screws from the head.
- Remove the wheel base and the circuit board carefully not to damage the spring.

## Step 11



- Push the six black fur clips out using the spudger.
- Remove the fur completely.

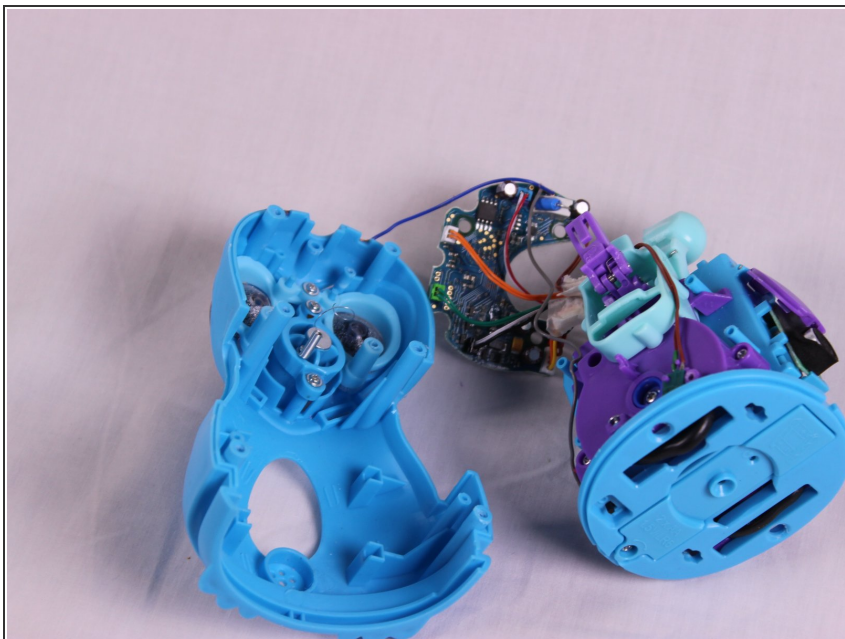
## Step 12 — Nose Spring Replacement



- Using the angled tweezers tool, disconnect the spring that is attached to the nose from the lever.



## Step 13



- Separate the body casing from the core and circuit board.

⚠ Don't damage the small wire connected from the top of the head to the circuit board.

## Step 14



- Remove a single 7mm Phillips #00 screw from the break.
- Remove the spring.

To reassemble your device, follow these instructions in reverse order.