



# Dell Latitude E4310 Display Replacement

Use this guide to replace the display on your Dell Latitude E4310 laptop.

Written By: Aylin



---

## INTRODUCTION

This guide walks through how to remove and replace a display on the Dell Latitude E4310 laptop in the event of a broken or bad display.

---

### TOOLS:

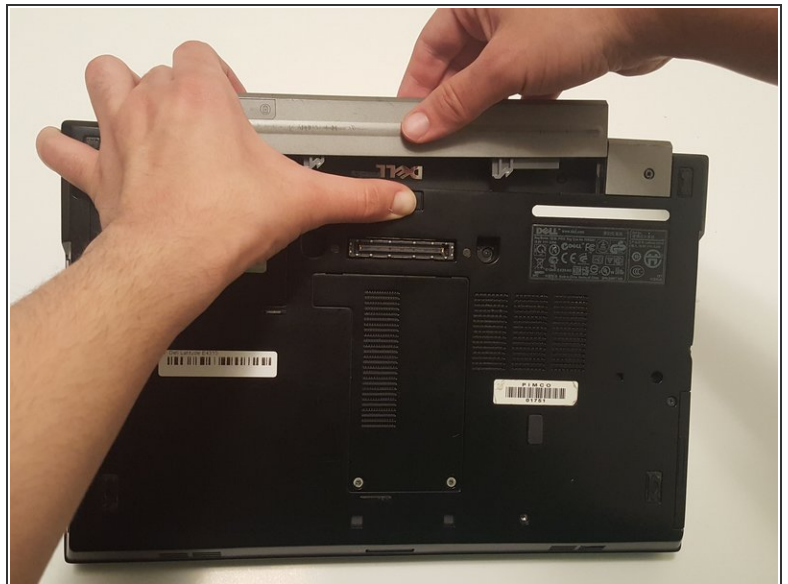
- [Phillips #1 Screwdriver](#) (1)
  - [Metal Spudger](#) (1)
  - [Tweezers - Pro/ESD/Angled](#) (1)
  - [Phillips #0 Screwdriver](#) (1)
-

## Step 1 — Battery



- Power down the laptop and remove all power cords.

## Step 2



- Push in the battery release button with your thumb.
- Pull up on the battery to remove.

## Step 3 — Display



- Open up the laptop and flatten it down on a workable surface.
- Turn it around so that the screen is closest to you.
- Insert the flat end of a spudger, or plastic opening tool, into the groove between the screen bezel and top case.
- Twist the spudger, or plastic opening tool, until you hear a clicking sound and continue doing this around the entirety of the display.
- Remove the bezel.

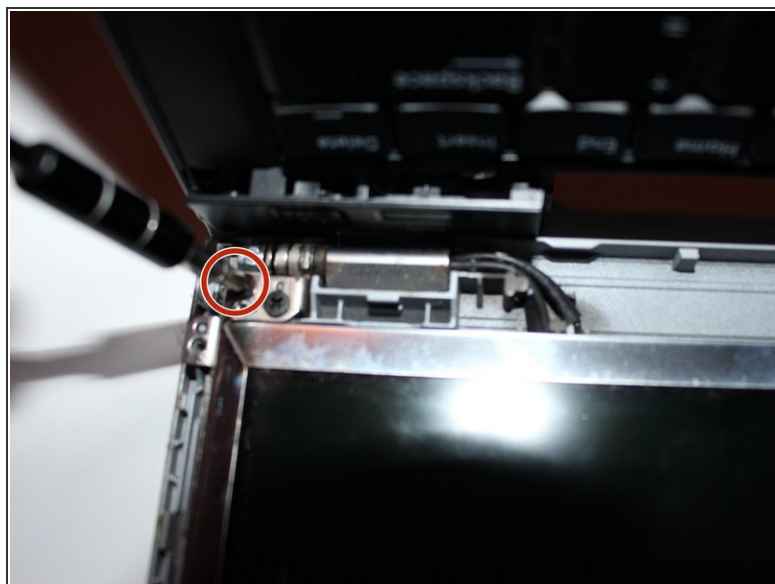


## Step 4



- Remove the six 0.3mm Phillips #1 screws.

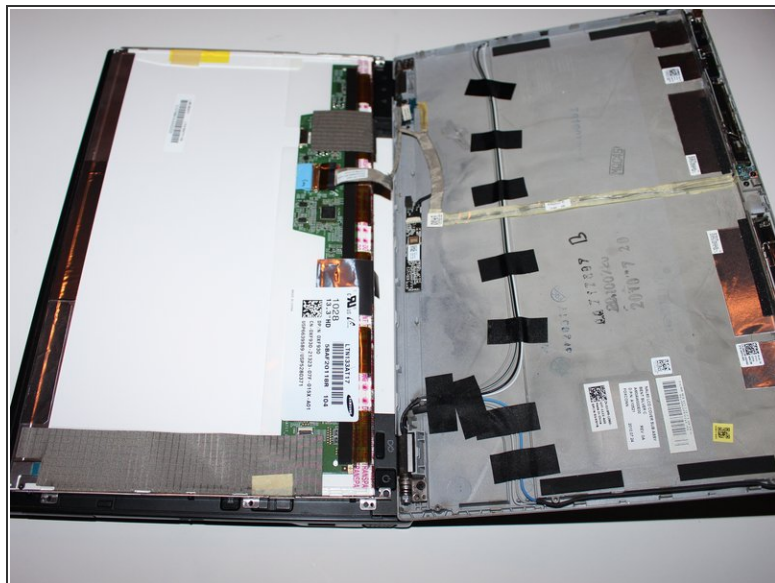
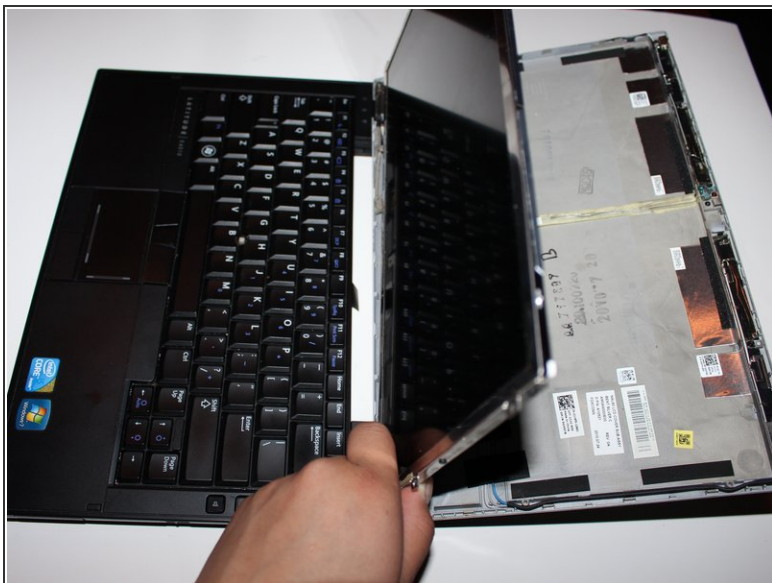
## Step 5



- Remove the two 0.5mm Phillips #1 screws.

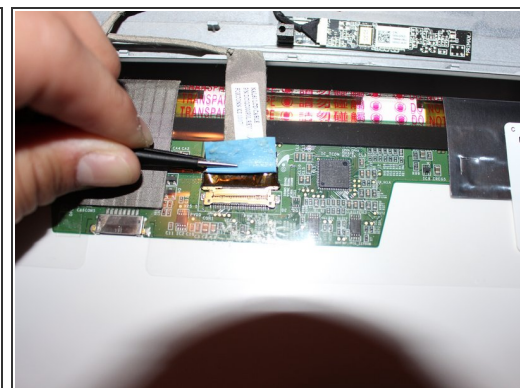
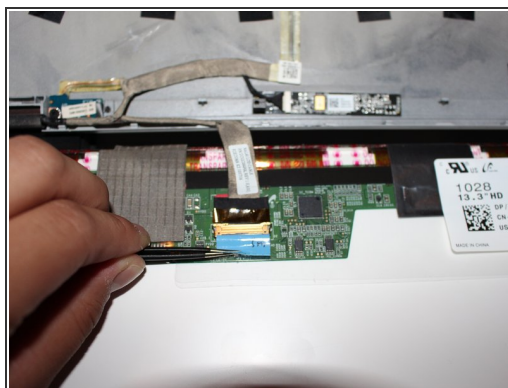
 There are two screws located at each corner. **Only remove the ones closest to the outer edge.**

## Step 6



- Carefully lift the screen up and flip it over onto the keyboard side as if you were turning the page of a book.

## Step 7



- Use a pair of tweezers to flip the blue tape 180 degrees.
- i** By flipping the tape you disconnect the display connector.

## Step 8



- Remove the screen from the laptop.

To reassemble your device, follow these instructions in reverse order.