



Dell Latitude E6420 Keyboard Replacement

How to replace a Dell Latitude E6420 keyboard.

Written By: Madysen Eames



INTRODUCTION

Keys can break off or stop working. This guide will show users how to replace the keyboard.

TOOLS:

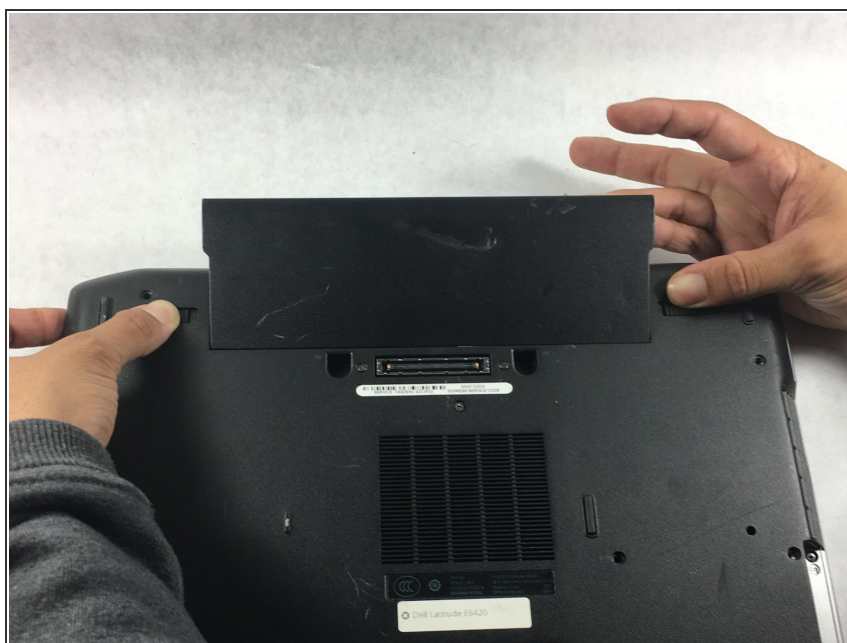
- [Phillips #00 Screwdriver](#) (1)
 - [Phillips #1 Screwdriver](#) (1)
 - [Spudger](#) (1)
 - [iFixit Opening Tools](#) (1)
 - [Phillips #0 Screwdriver](#) (1)
-

Step 1 — Battery



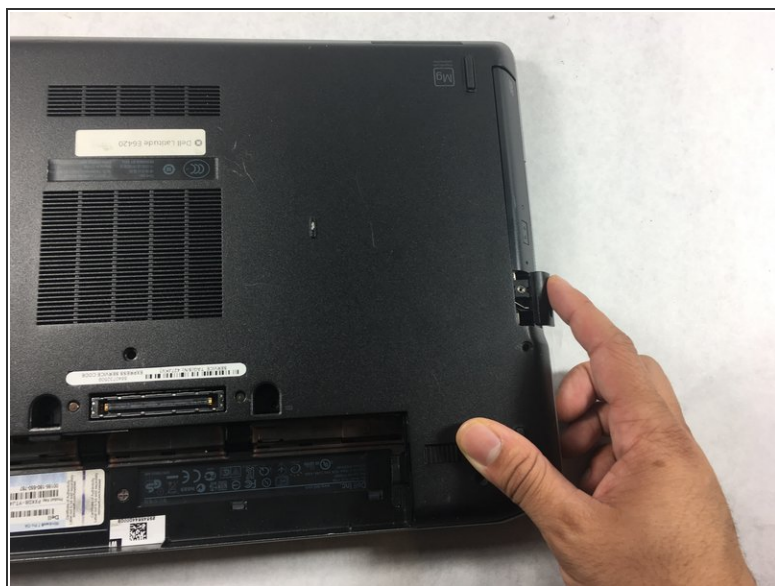
- Push the tabs on the left and right of the battery out towards the edge of the case.

Step 2



- While still pushing in the tabs, using your pinky finger, lift the battery out of the laptop.

Step 3 — CD/DVD Drive



- Push the button in on the CD/DVD drive to eject the drive.

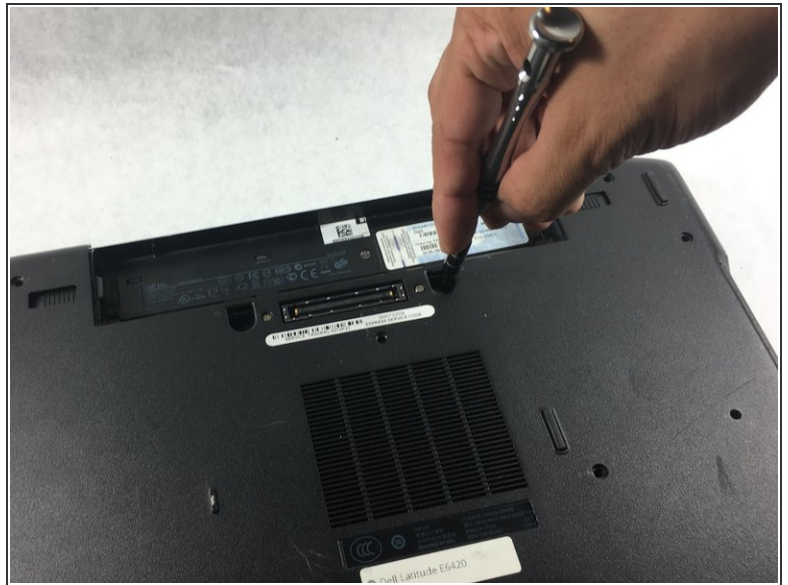
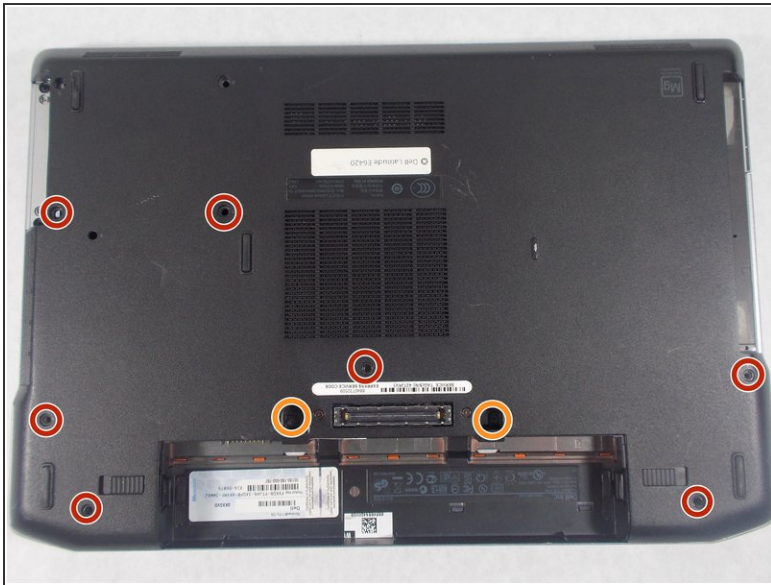
Step 4



- Slide the drive out of the laptop.

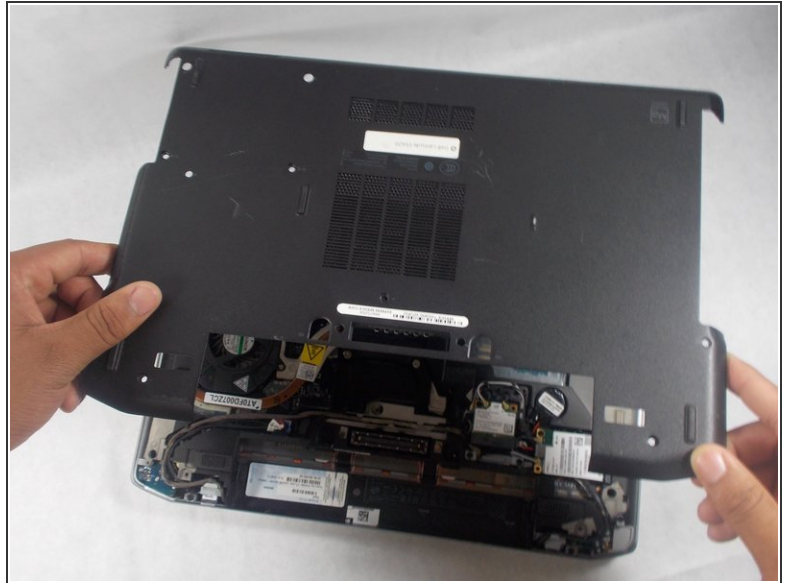
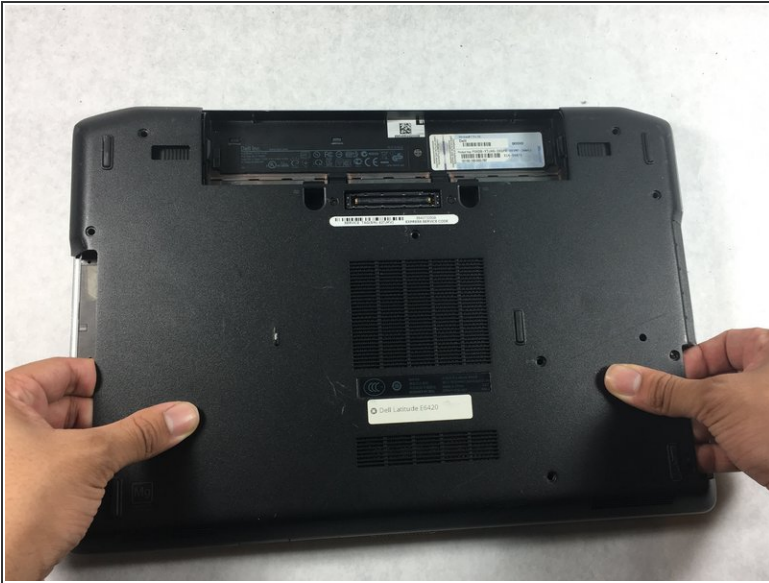
⚠ When removing the drive, keep it flat to prevent damage to anything inside the laptop.

Step 5 — Backplate



- Using the screwdriver, remove seven 4mm Phillips #1 screws from the bottom of the laptop.
- Using the screwdriver, remove two 9mm Phillips #00 screws from the bottom of the laptop.

Step 6



- Gently lift the back plate off of the laptop making sure all of the tabs on the inside perimeter of the back plate are unhooked before lifting.

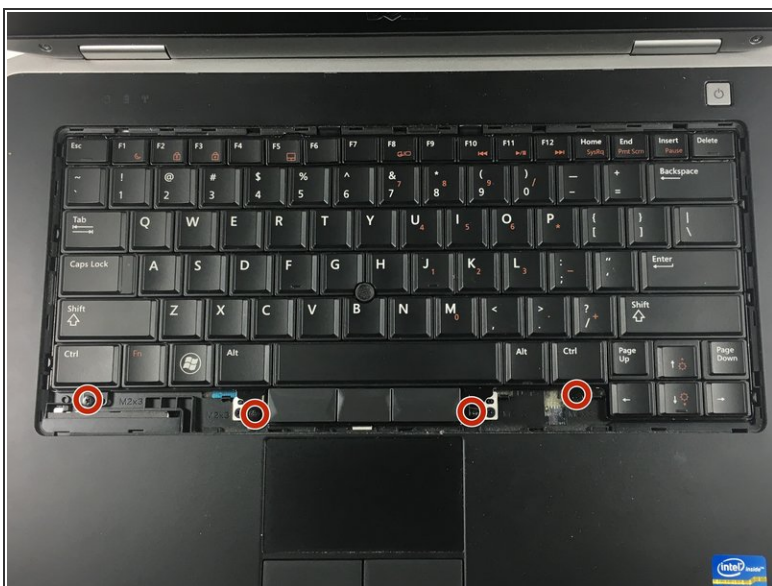
⚠ Be careful when removing the backplate. Lifting the backplate while the tabs are still hooked in will result in broken tabs.

Step 7 — Keyboard



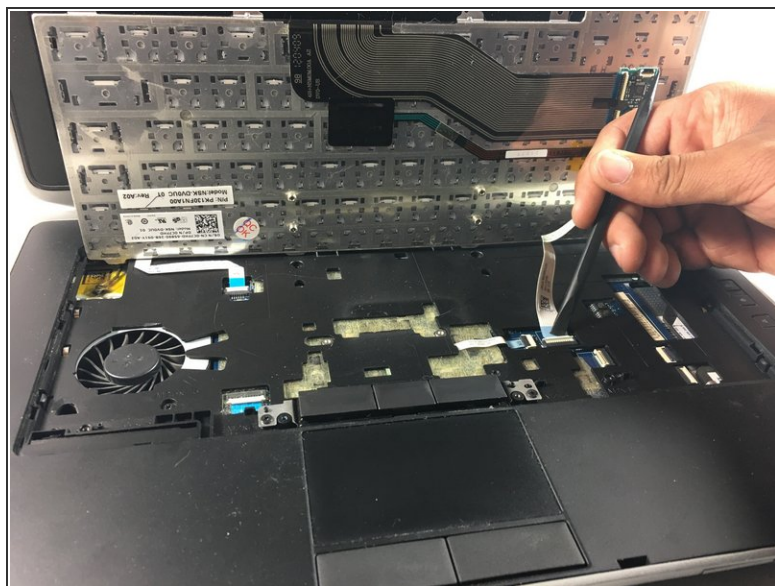
- Use the plastic opening tool to remove the bezel from around the keyboard.

Step 8



- Using the screwdriver, remove four 3mm Phillips #0 screws from the keyboard.

Step 9



- Lift the keyboard and use the spudger to disconnect the keyboard cable.

⚠ Gently lift the keyboard to prevent damage to the cable.

Step 10



- Lift the keyboard out of the laptop.

To reassemble your device, follow these instructions in reverse order.