



Toshiba Satellite L55t-B5271 Motherboard Replacement

This guide will help you replace a broken...

Written By: Noelle Dulude



INTRODUCTION

This guide will help you replace a broken motherboard in your laptop. It is a detailed process but this guide will allow you to easily remove and replace your motherboard.

TOOLS:

[iFixit Opening Tool](#) (1)
[Anti-Static Wrist Strap](#) (1)
[Phillips #00 Screwdriver](#) (1)
[Heavy-Duty Spudger](#) (1)
[Spudger](#) (1)
[Tweezers](#) (1)

PARTS:

[Toshiba Satellite L55t-B5271](#)
[Motherboard](#) (1)

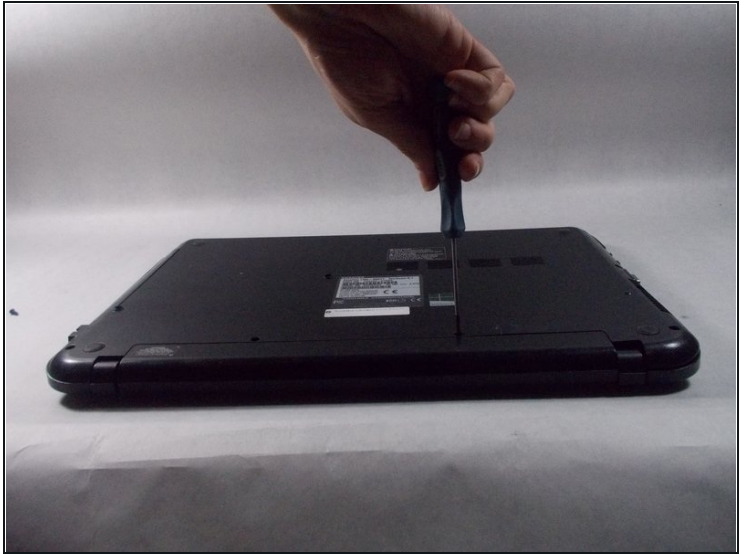
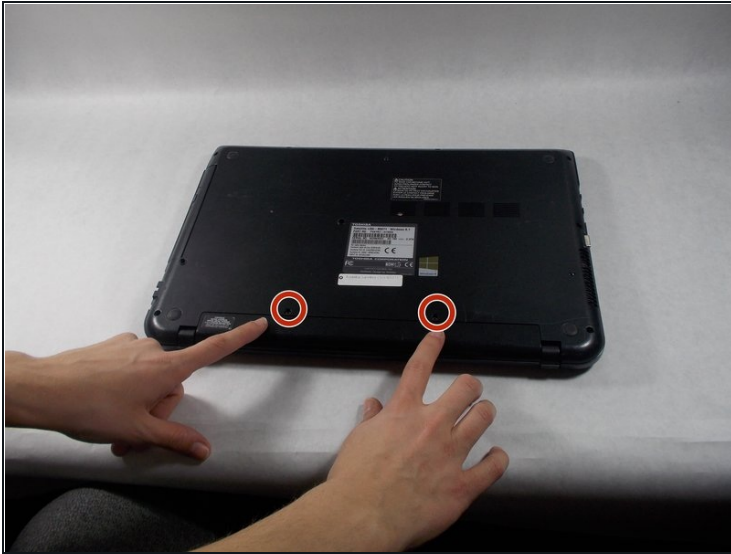
Step 1 — Battery



 Make sure you turn the laptop off first.

- Close the laptop lid and flip it over so that Toshiba logo is facing down.

Step 2



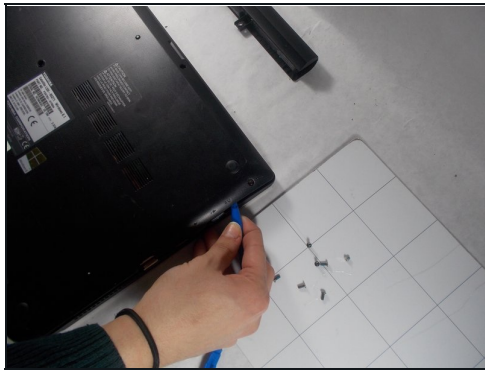
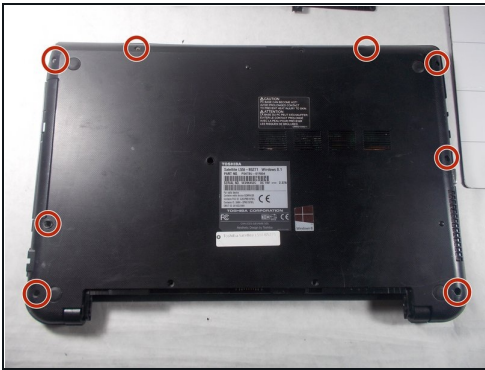
- Remove the two 6.5 mm Phillips head screws indicated using a Phillips #00 screw driver.

Step 3



- Once the screws are removed, slide the battery pack out of the computer.

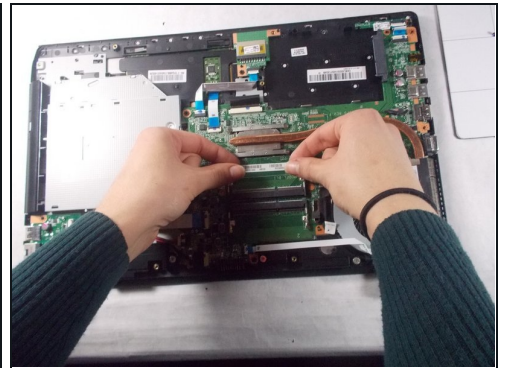
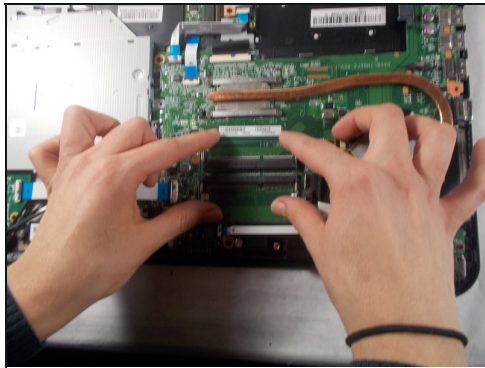
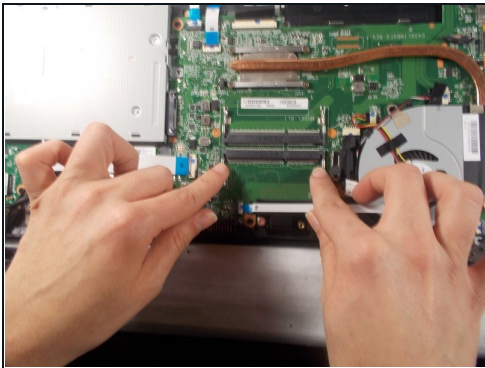
Step 4 — Back Panel



- Remove all 6.5 mm Philips head screws on the back cover of the laptop with a Philips #00 screwdriver.
- Use the plastic opening tool to remove the back cover from the laptop.

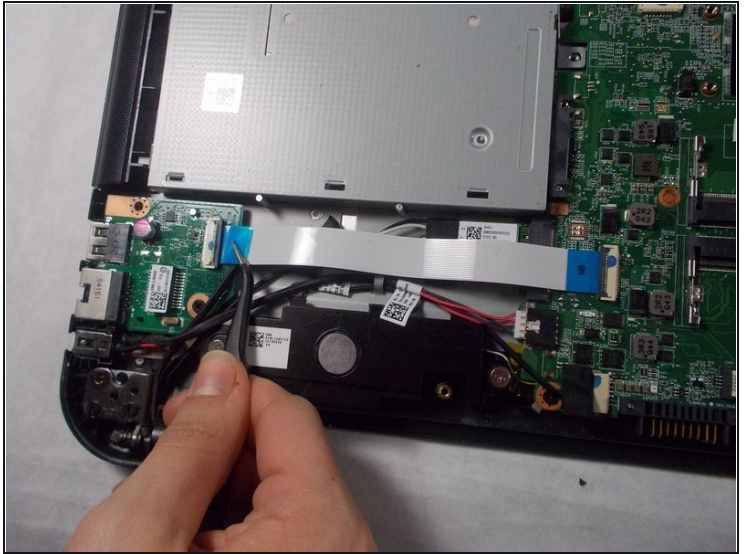
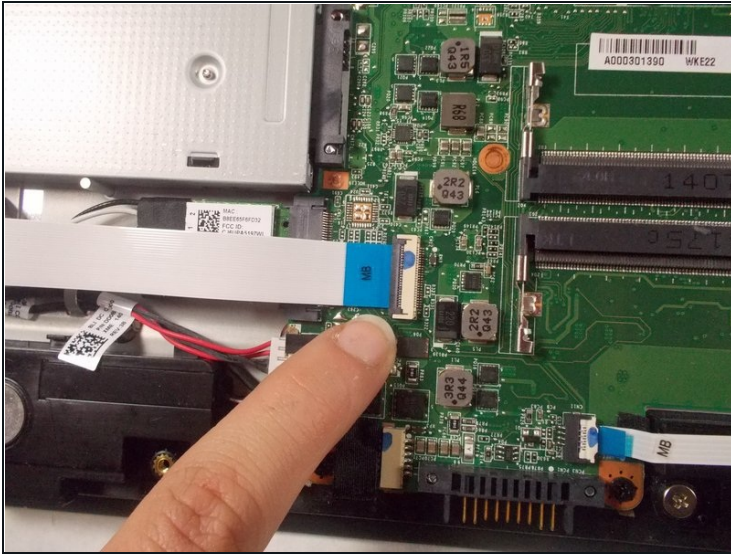
⚠ Be aware that static discharge can cause damage to sensitive electrical components within the computer. To avoid this you can wear an [anti-static wrist strap](#).

Step 5 — RAM



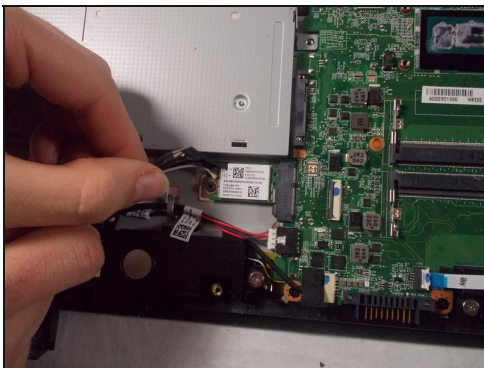
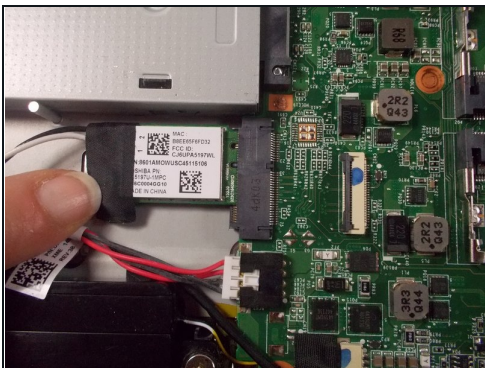
- ⓘ This laptop does not have a RAM present. Follow instructions to replace your own.
- Evenly press down on the clips on either side of the RAM stick.
 - To pull out the RAM stick, be sure to align the notches on the RAM stick with the notches in the RAM holder.

Step 6 — Wireless Card



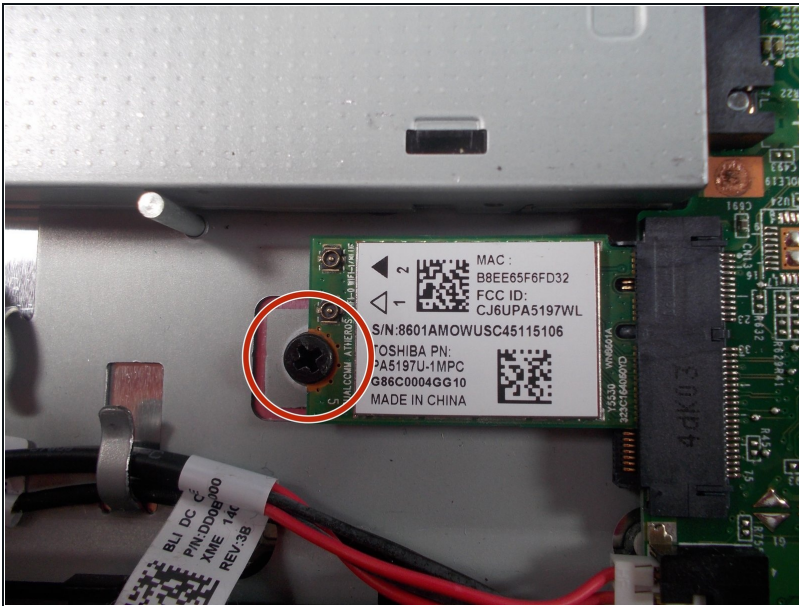
- Remove the ribbon by flipping up the tabs and using the black tweezers to gently pull the ribbon out from both ends.

Step 7



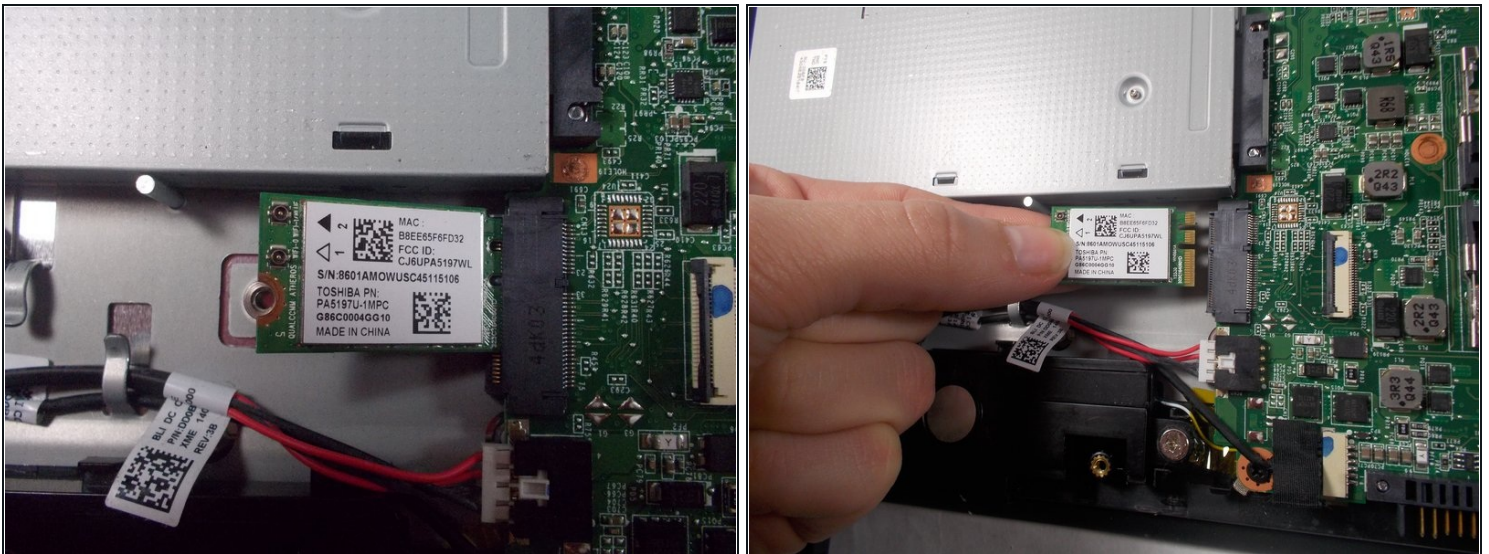
- Remove the tape from the card.
- Disconnect the wires using the #4 black spudger tool.

Step 8



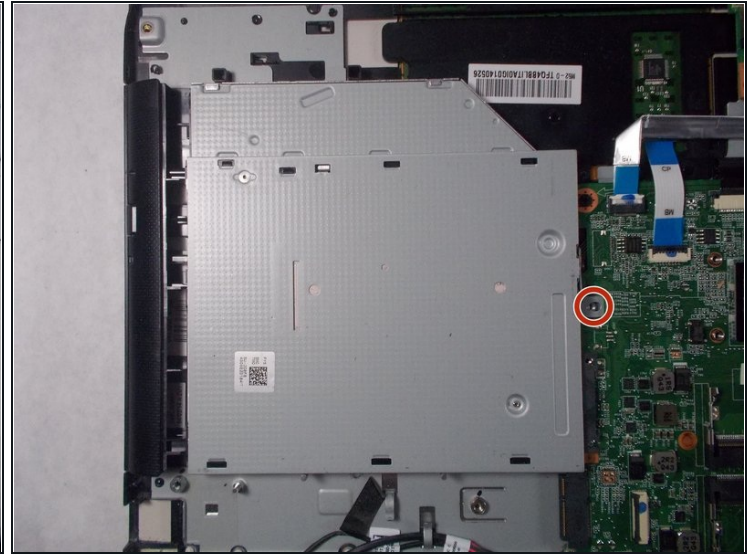
- Remove the 3mm Phillips head screw with a Phillips #00 screwdriver.

Step 9



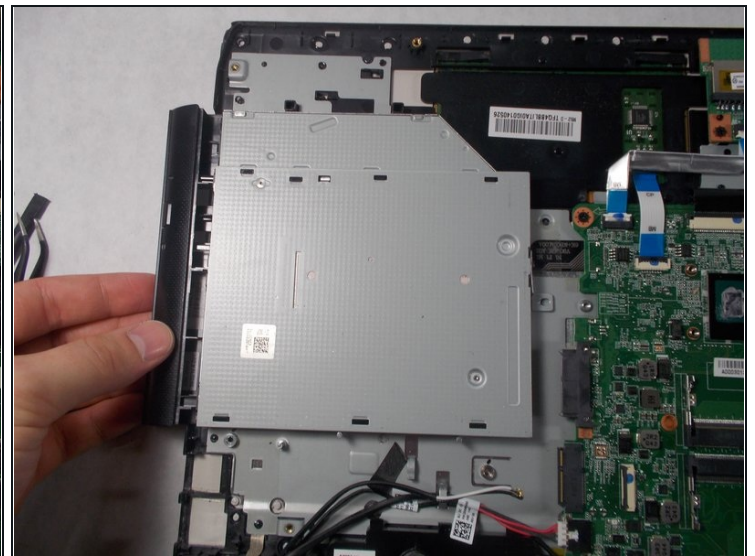
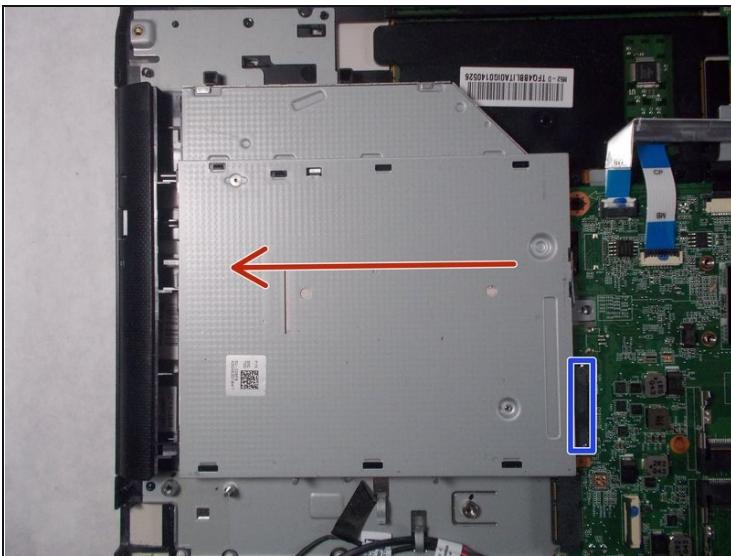
- Pull up on the wireless card and remove it from the device.

Step 10 — CD Drive



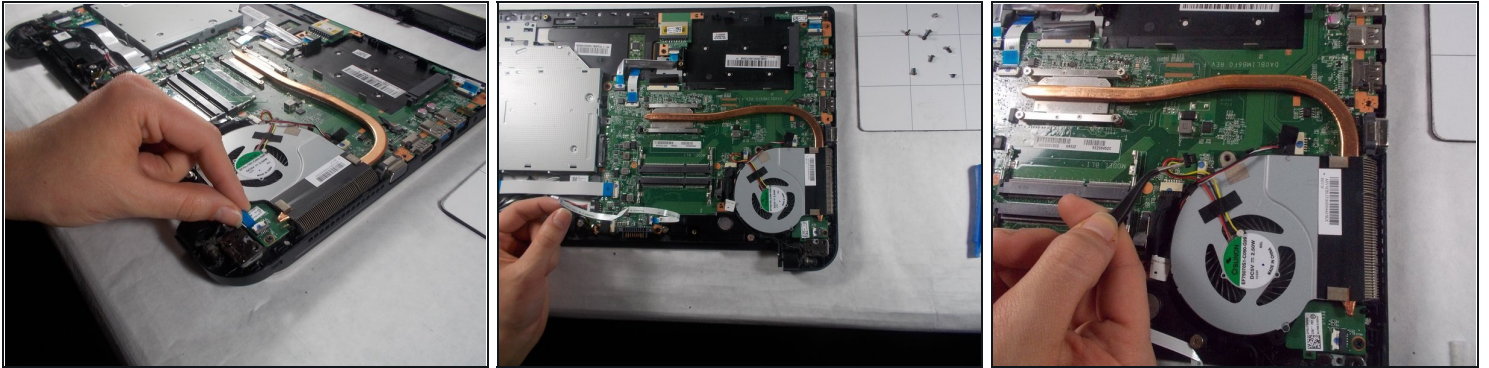
- Remove the 3 mm Philips head screw that connects the CD drive to motherboard with a Phillips #00 screwdriver.

Step 11



- Gently pull the CD drive out, disconnecting it from the motherboard connector marked in blue.

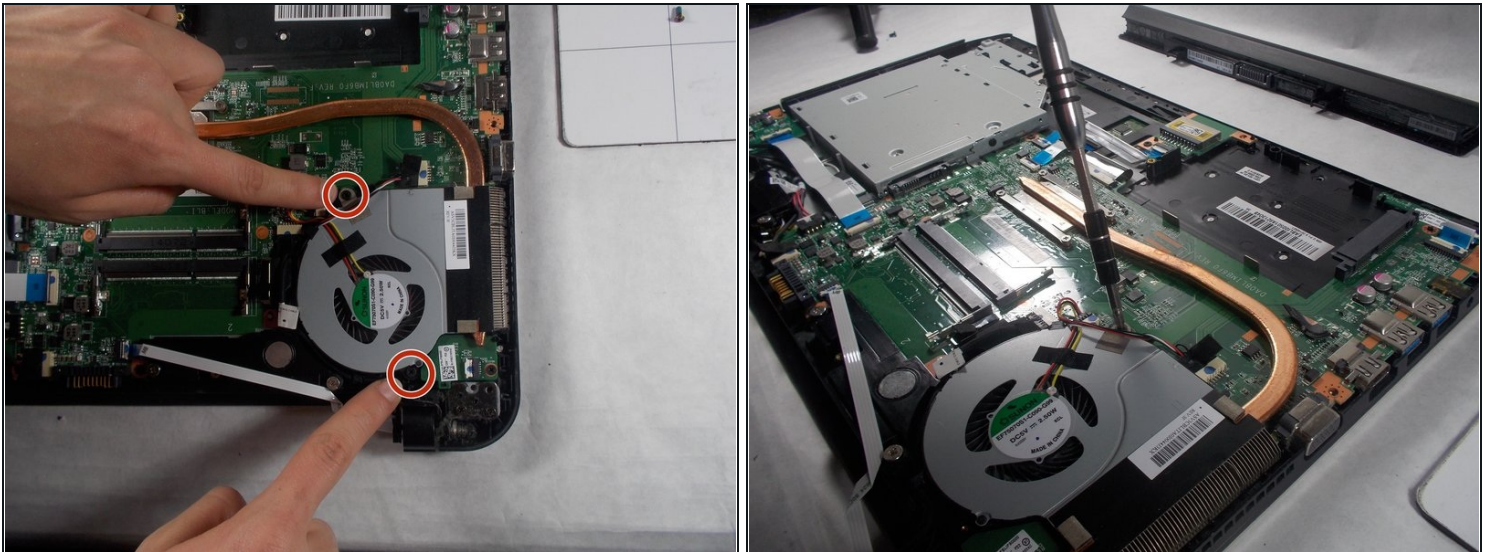
Step 12 — Cooling Fan with Heat Sink



① The ribbon and wire must be moved out of the way of the fan.

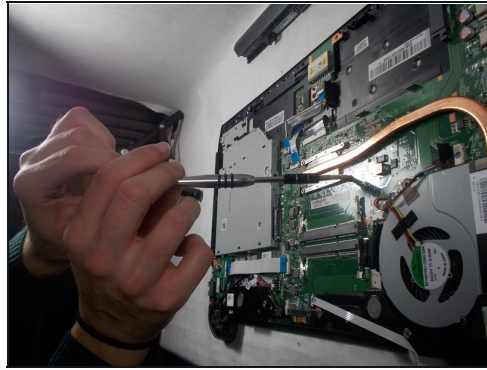
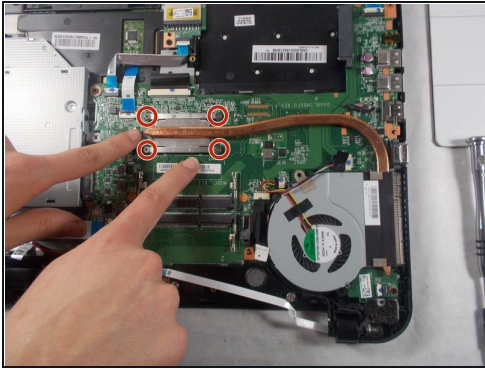
- Using a black tweezer tool, lift the tab holding the ribbon in place and then gently pull it out.
- Using the same tweezer tool, again lift the tab holding the wires in place and gently pull them out.

Step 13



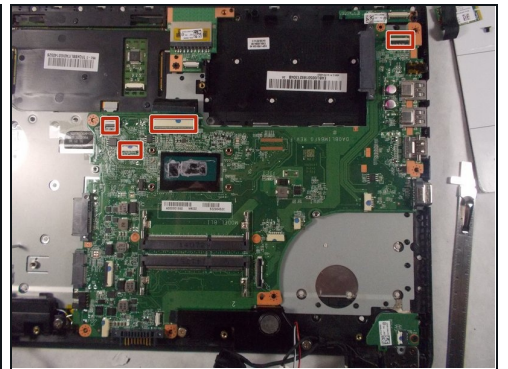
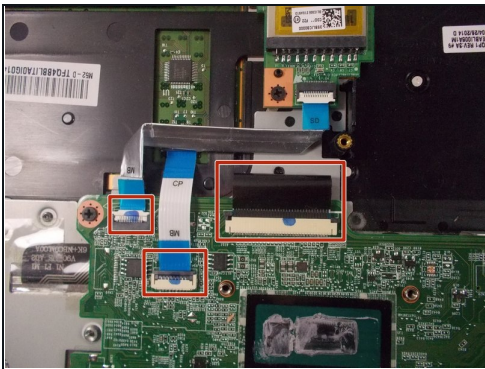
- Unscrew the two 3mm Phillips head screws on each fan using the Phillips #00 screwdriver.

Step 14



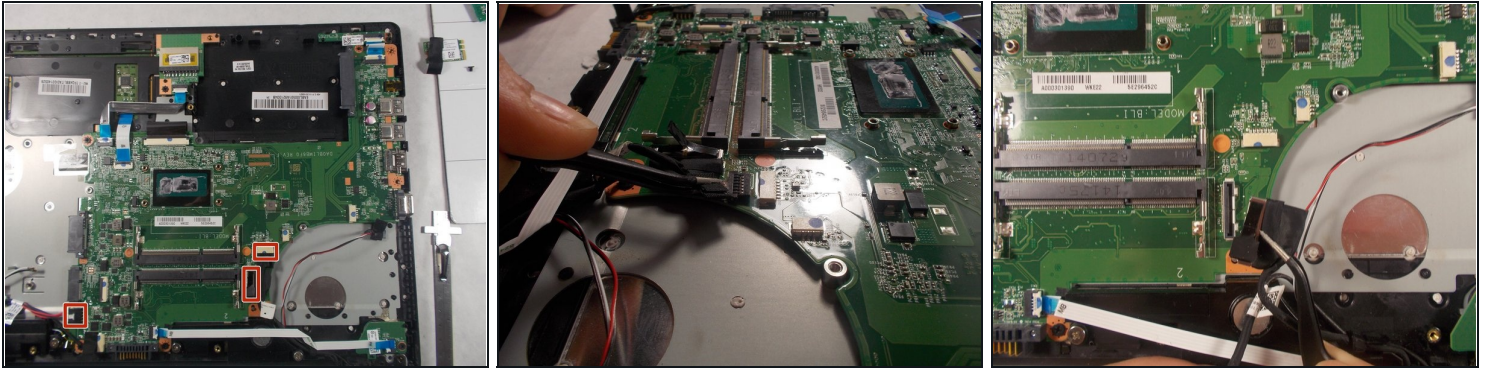
- Unscrew the four, 3mm Phillips head screws holding the last piece to the laptop using a Phillips #00 screwdriver.
- Gently pull the cooling fan with heat sink off the laptop and set aside.

Step 15 — Motherboard



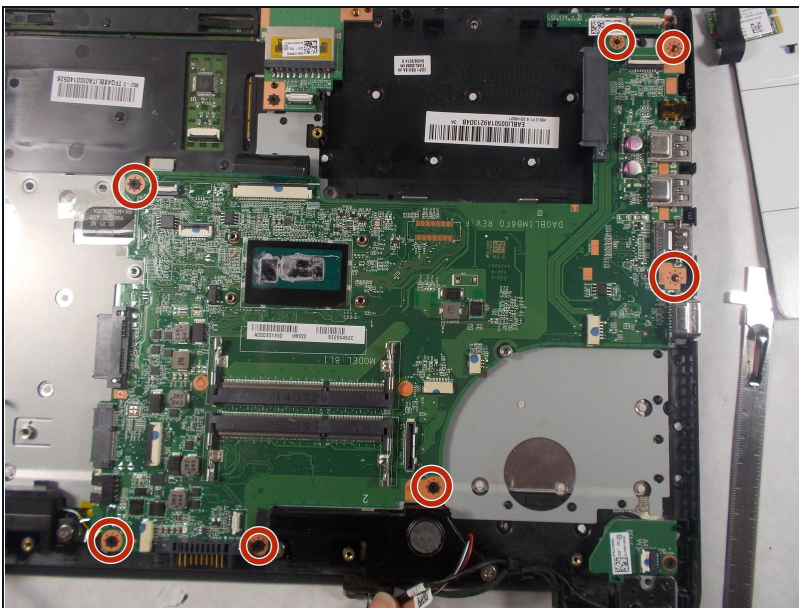
- Disconnect all of the ribbons by lifting the tabs and gently pulling them out.

Step 16



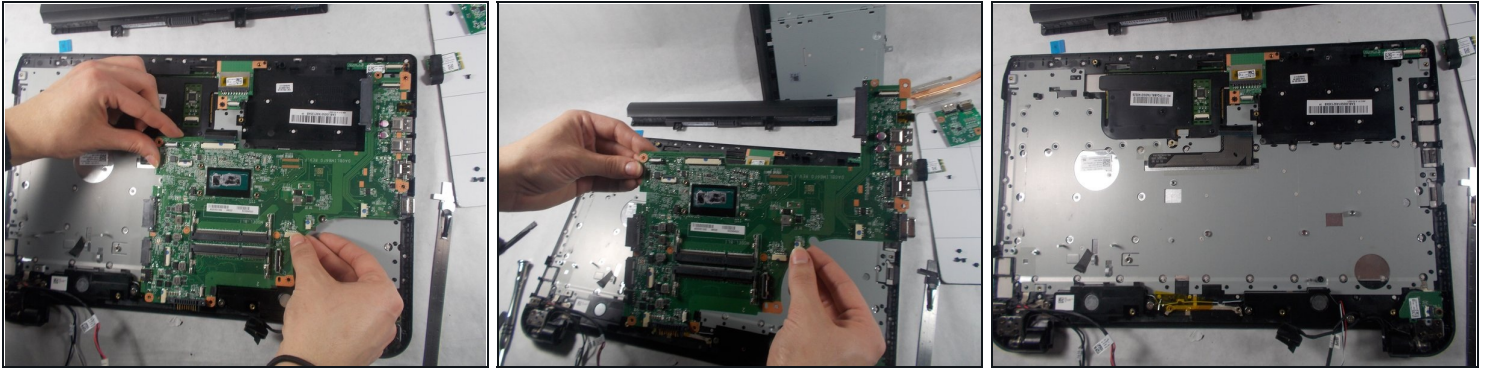
- Remove the wires from the motherboard using the tweezers.

Step 17



- Remove all seven of the 3mm Phillips head screws with the Phillips #00 screwdriver.

Step 18



- Gently lift the motherboard from the back of the laptop.

To reassemble your device, follow these instructions in reverse order.