



Toshiba Satellite L55t-B5271 Back Panel Replacement

This guide will help you remove the back panel...

Written By: Garrett Garofalo



INTRODUCTION

This guide will help you remove the back panel of your device. No special skills are required, but you do need to know how to use a Phillips #00 screwdriver.

TOOLS:

[Phillips #00 Screwdriver](#) (1)

[Heavy-Duty Spudger](#) (1)

[Anti-Static Wrist Strap](#) (1)

[iFixit Opening Tool](#) (1)

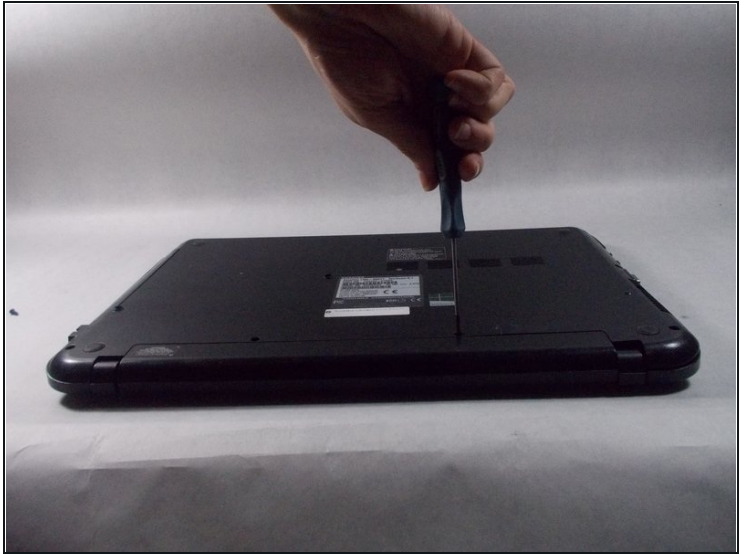
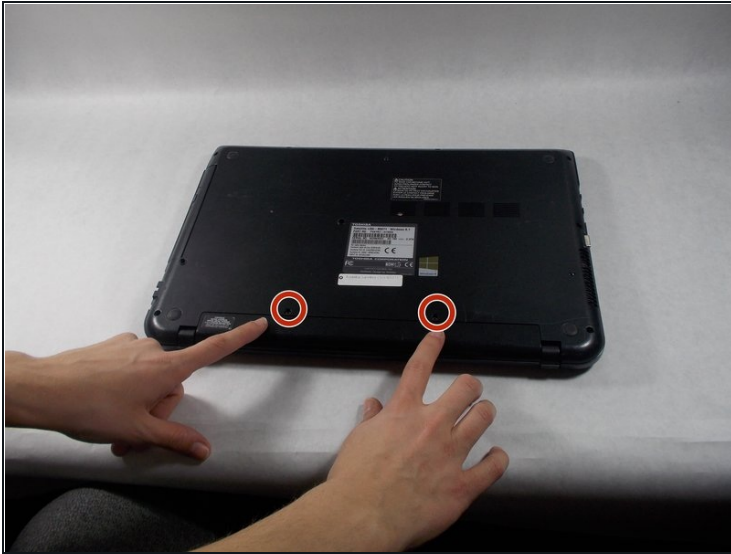
Step 1 — Battery



 Make sure you turn the laptop off first.

- Close the laptop lid and flip it over so that Toshiba logo is facing down.

Step 2



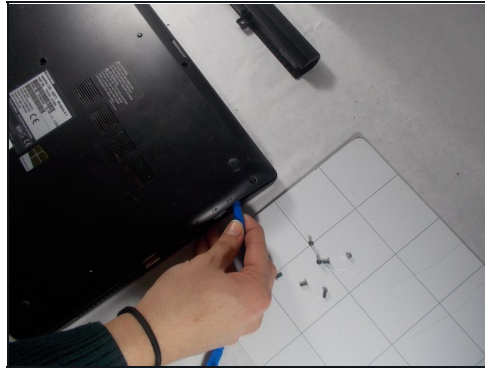
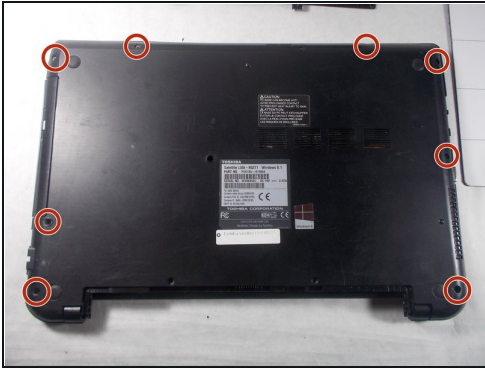
- Remove the two 6.5 mm Phillips head screws indicated using a Phillips #00 screw driver.

Step 3



- Once the screws are removed, slide the battery pack out of the computer.

Step 4 — Back Panel



- Remove all 6.5 mm Philips head screws on the back cover of the laptop with a Philips #00 screwdriver.
- Use the plastic opening tool to remove the back cover from the laptop.

⚠ Be aware that static discharge can cause damage to sensitive electrical components within the computer. To avoid this you can wear an [anti-static wrist strap](#).

To reassemble your device, follow these instructions in reverse order.