



Display Assembly

Written By: Terrence15

INTRODUCTION

In this guide, we will be showing you how to remove and replace the Display Assembly.

TOOLS:

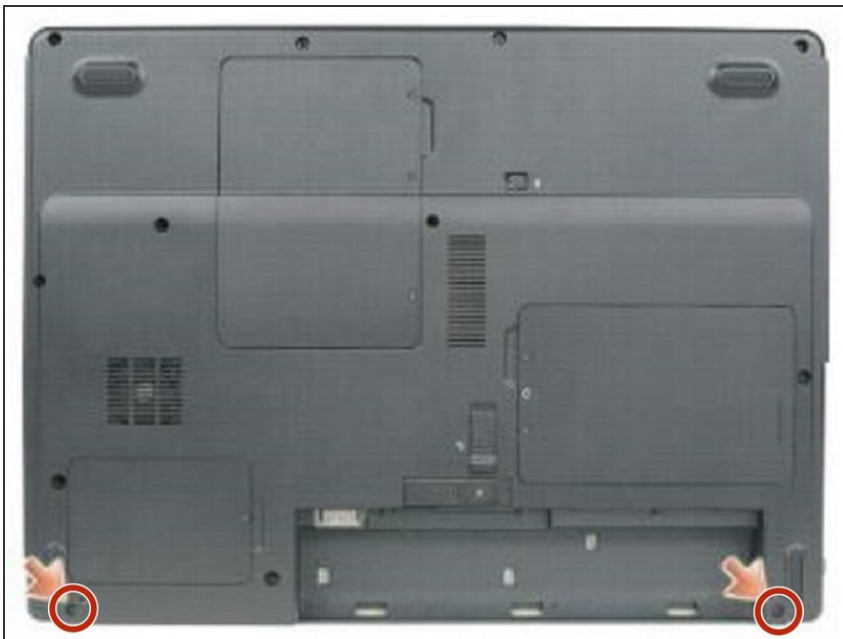
- [Essential Electronics Toolkit](#) (1)
-

Step 1 — Prerequisites



- Pull straight up on the pull-tab that is attached to the display-feed flex cable to disconnect the cable from the system board.
- Disconnect the antenna cable.
- Close the display.
- Turn the computer upside down with the back of the computer facing you.

Step 2 — Remove the Screws



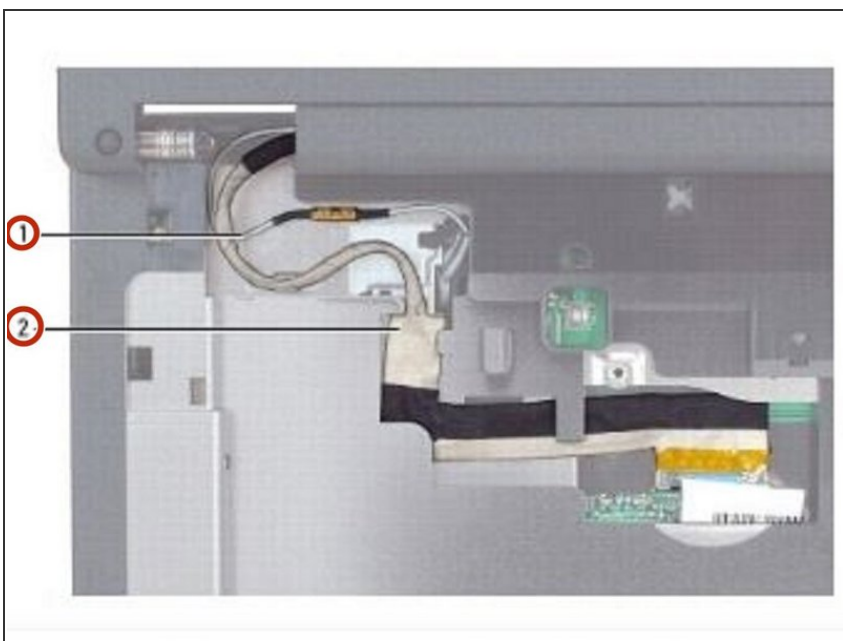
- From the bottom of the computer, remove the two M2.5 x 8-mm screws labeled "D."

Step 3 — Remove the Screws



- From the back of the computer, remove the two M2.5 x 8-mm screws labeled "D."

Step 4 — Removing the Cables



- Turn the computer right-side up and open the display.
- Carefully remove the antenna cable and the display cables from their routing guides.

Step 5 — Lifting the Display Assembly



- ★ NOTICE: Be careful not to damage the display switch when removing the display.
- Lift the display assembly out of the computer base.

To reassemble your device, follow these instructions in reverse order.