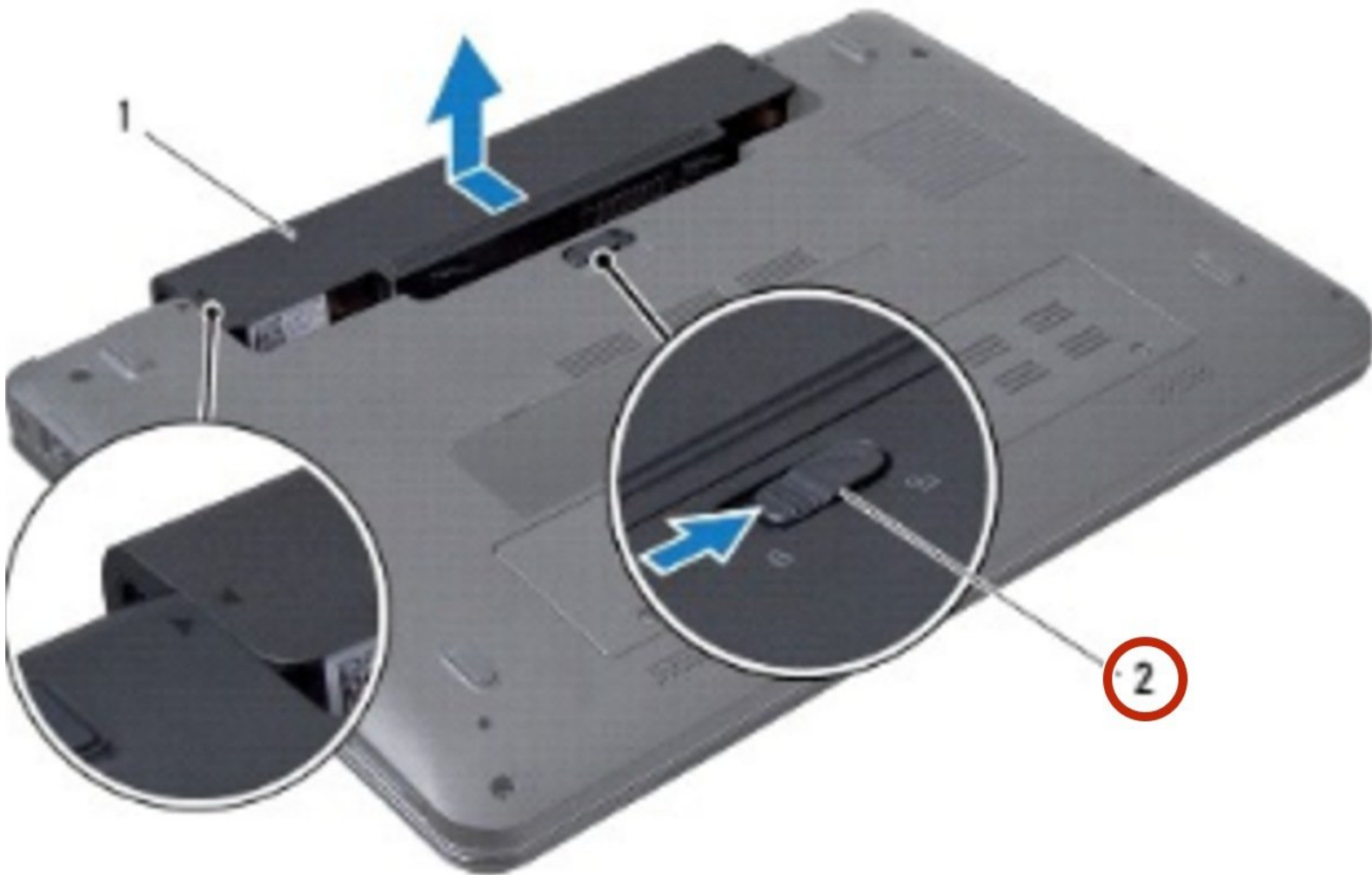




# Dell Inspiron 1320 Battery Replacement

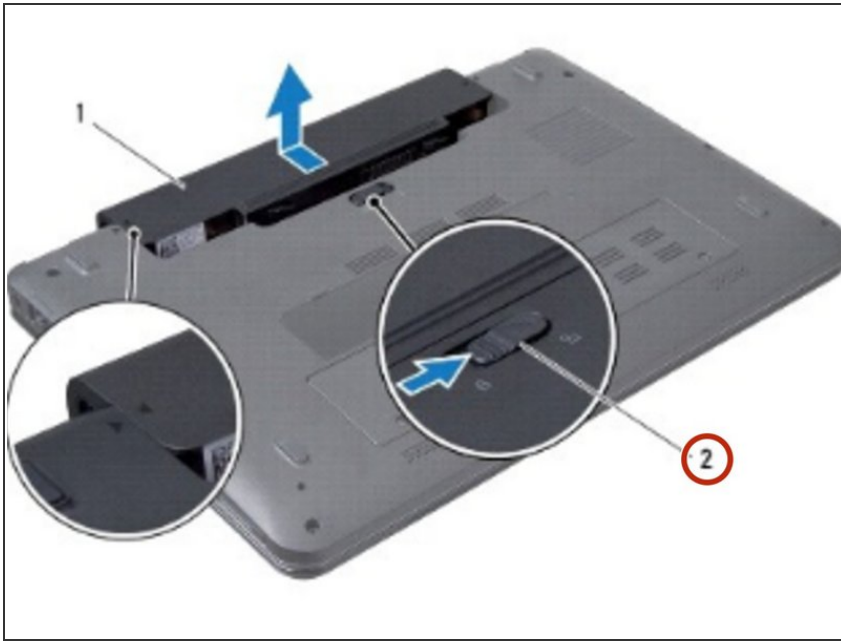
Written By: Terrence15



# INTRODUCTION

In this guide, we will show you how to remove and replace the Battery.

## Step 1 — Sliding the Battery Latch

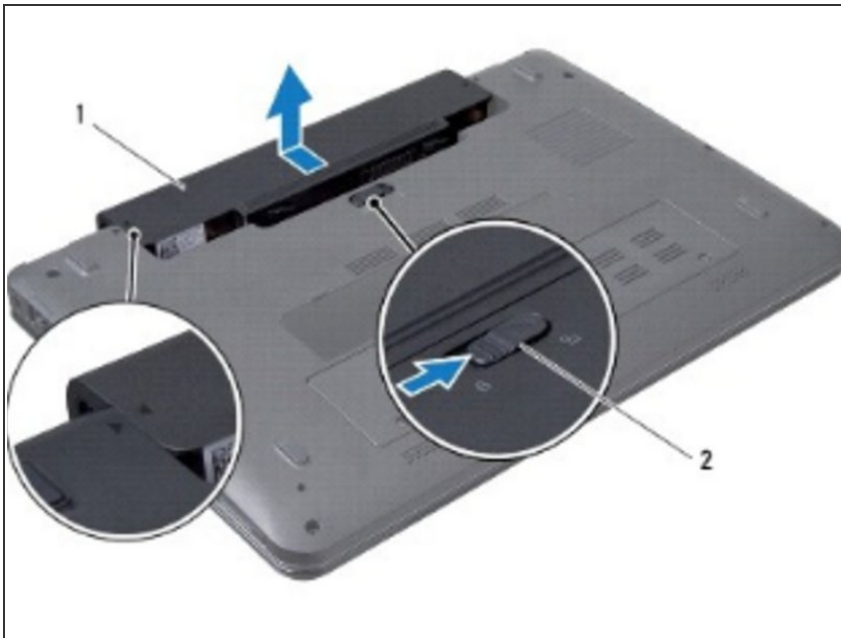


**⚠ WARNING:** Before working inside your computer, read the safety information that shipped with your computer. Follow the procedures in [Before You Begin](#).

**⚠ CAUTION:** To avoid electrostatic discharge, ground yourself by using a wrist grounding strap or by periodically touching an unpainted metal surface (such as a connector on your computer).

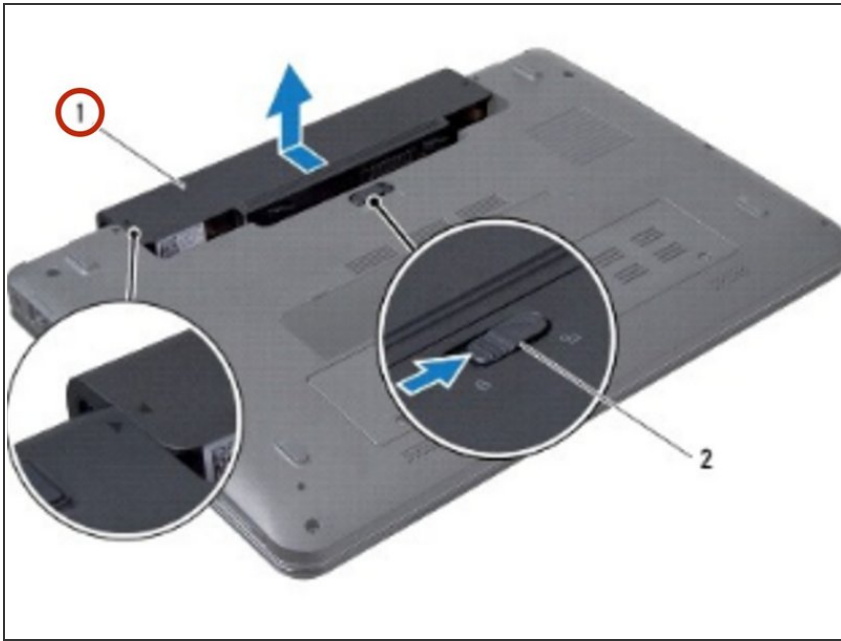
- Turn the computer over.
- Slide the battery release latch to the unlock position.

## Step 2 — Align the Triangles



- Align the triangles marked on the battery and the computer base.

### Step 3 — Sliding the Battery



- Slide the battery into the battery bay until it clicks into place.