



Lenovo G40-30 Hard Drive Replacement

How to replace a Lenovo G40-30 hard drive.

Written By: Grant Sepulvado





TOOLS:

- [JIS #0 Screwdriver](#) (1)
-

Step 1 — Battery



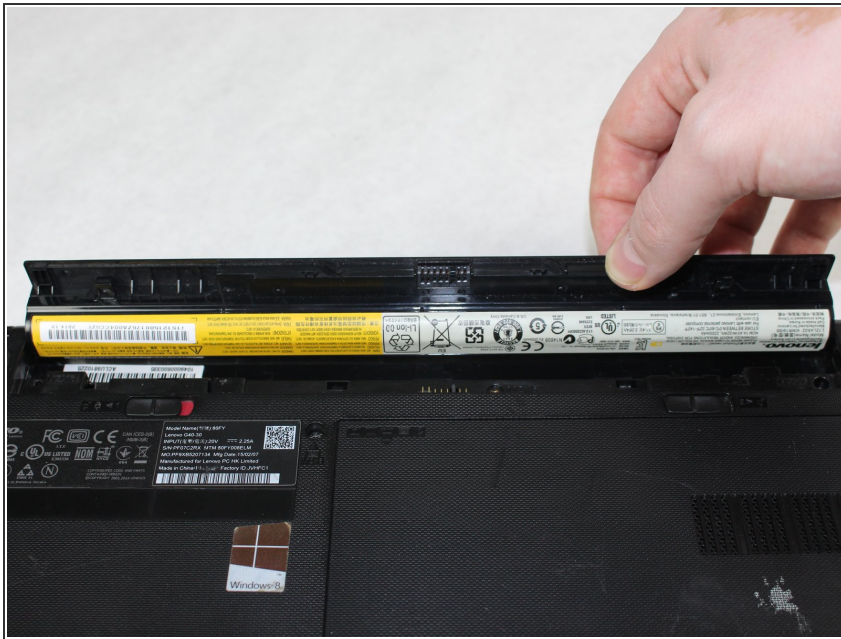
- At the top of the laptop you will see two switches, like in image one and two.
- Pull the switches outwards with your thumb, towards the unlocked lock.

Step 2



- Once both switches are pulled, the battery should pop out.

Step 3



- Now you are ready to insert your new battery.

Step 4 — Hard Drive



- Unscrew four 4mm JIS #0 screws.

Step 5



- After you have the screws out apply pressure with your thumb and slide the hard drive to the left.
- When the hard drive is completely left gently pull up on the right corner.

To reassemble your device, follow these instructions in reverse order.