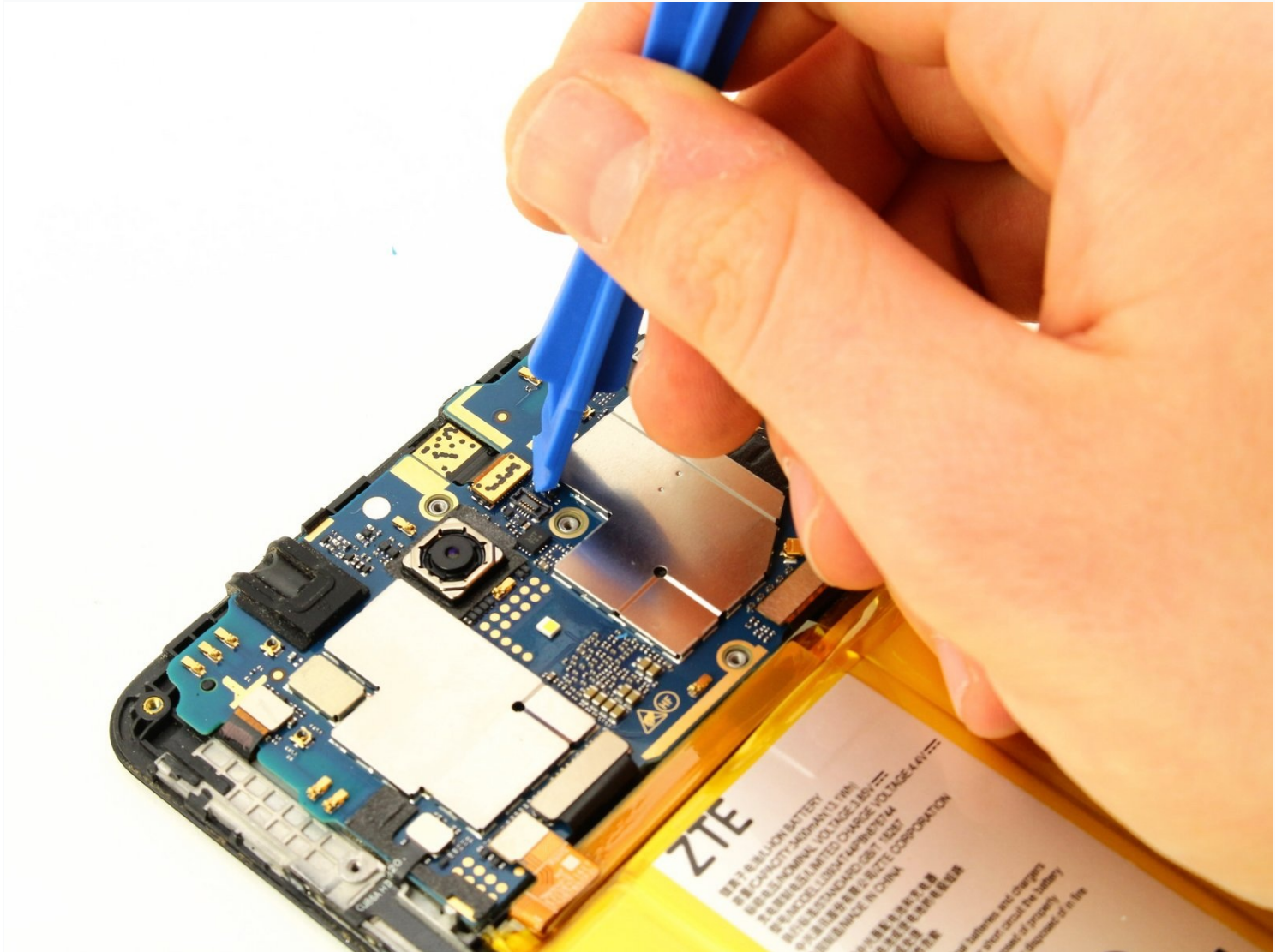




ZTE ZMax Pro Front-Facing Camera Replacement

This guide will show you how to replace the...

Written By: Nicholas Lecox



INTRODUCTION

This guide will show you how to replace the front-facing camera of the phone. You will need a plastic opening tool, tweezers, and a #00 Phillips screwdriver to replace the camera.

TOOLS:

[iFixit Opening Picks \(Set of 6\)](#) (1)


[iFixit Opening Tool](#) (1)

[Tweezers](#) (1)

[Phillips #00 Screwdriver](#) (1)

Step 1 — Back Panel Assembly



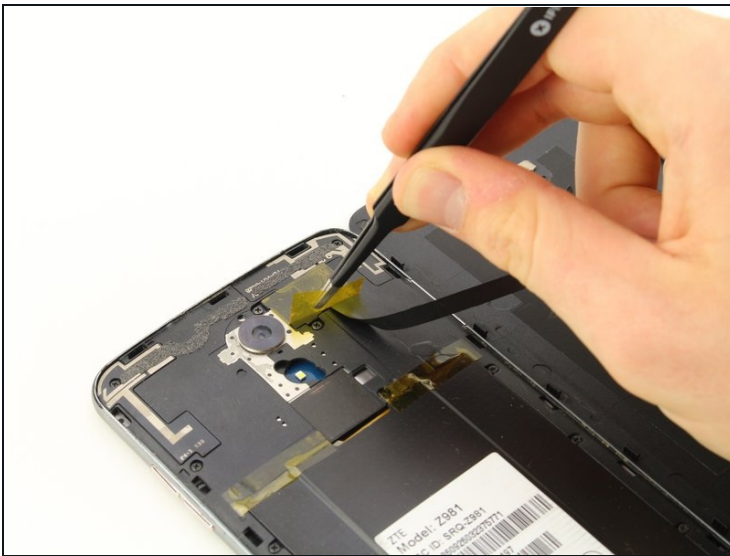
- Flip the phone over so that the back panel of the phone is facing up.
 - Wedge the plastic opening tool between the black outer panel and the silver side panel.
 - Push down on the plastic opening tool to separate the back panel from the rest of the phone.
 - Continue to do this around all sides of the phone until the back panel has popped all the way off.
-  Removing the back panel may make loud popping noises which is normal.

Step 2



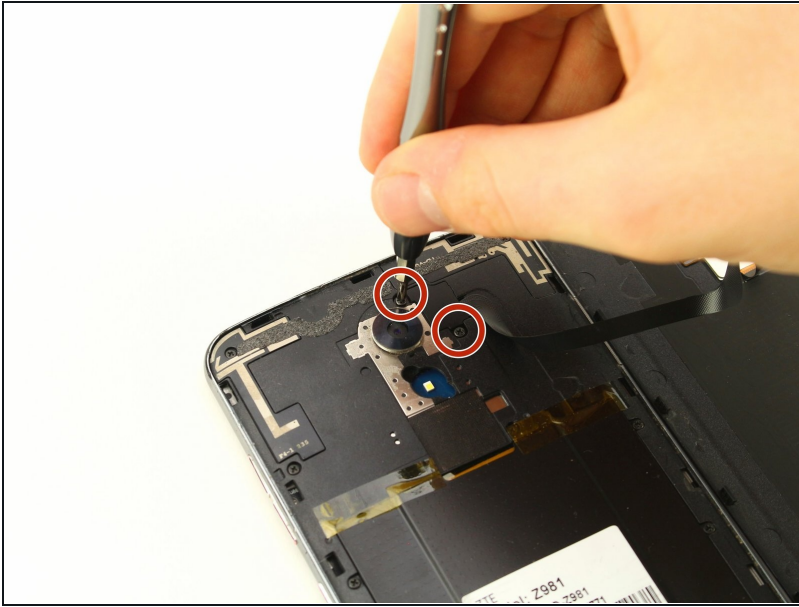
- Using your fingers, slide the SIM card all the way out of the phone.

Step 3



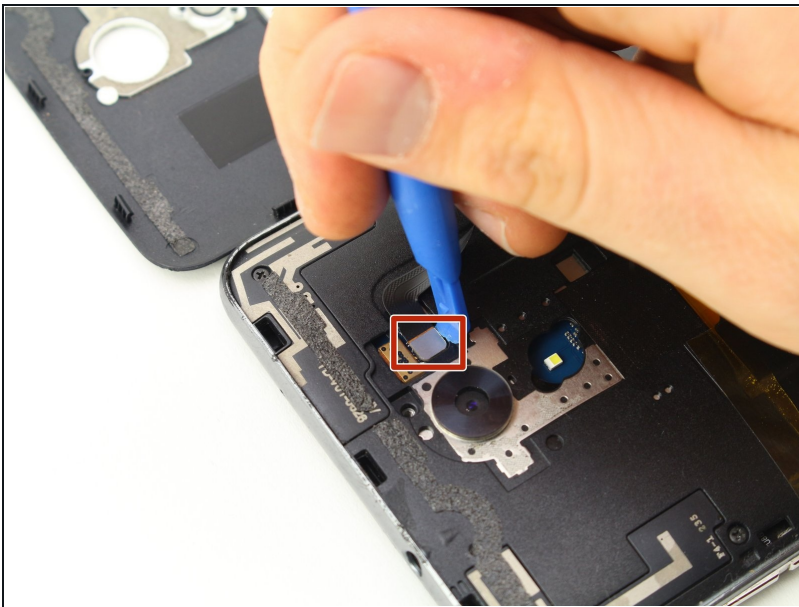
- Remove the yellow Kapton tape by using the [tweezers](#) to peel it up and away from the device.

Step 4



- Using the Phillips #00 screwdriver, remove the two 3.0 mm screws located near the top of the phone, next to the rear camera.

Step 5



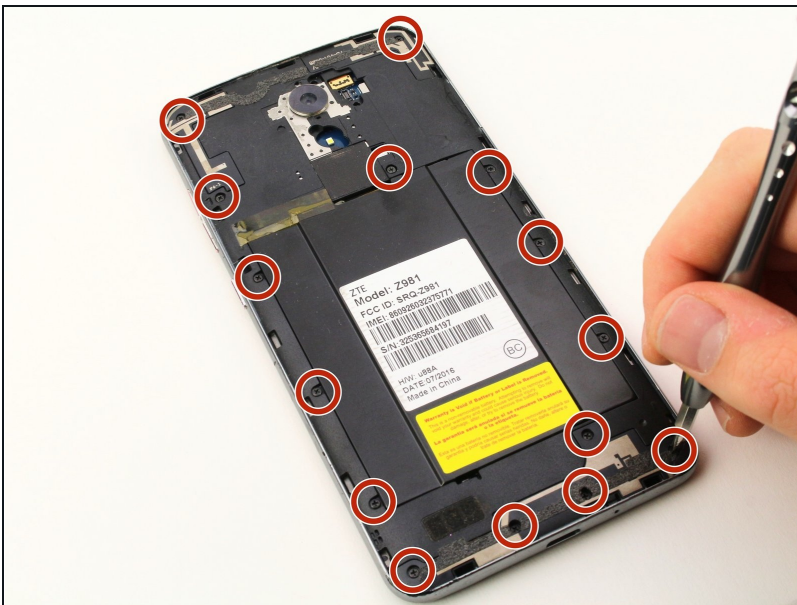
- Remove the fingerprint sensor flex cable, using the plastic opening tool to lift it out.

Step 6



- Using the tweezers, peel back the yellow Kapton tape located on the right side of the phone.

Step 7



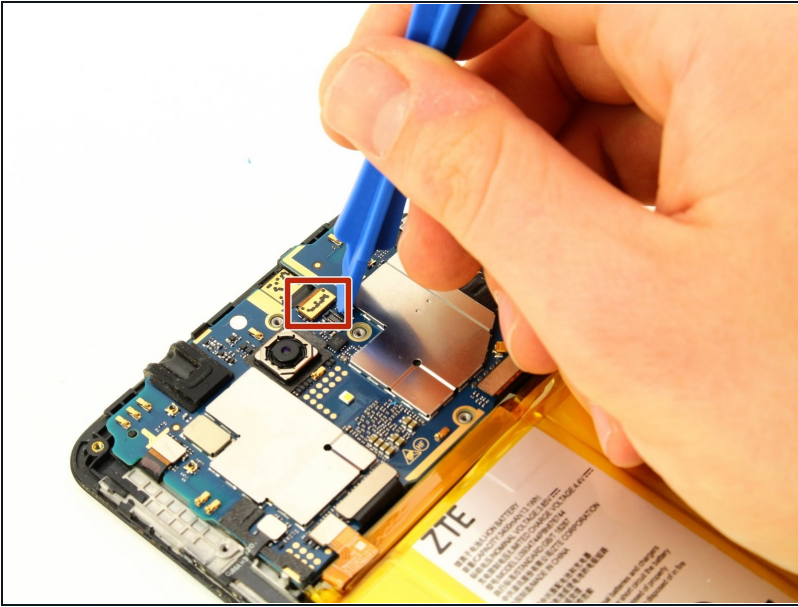
- Using the Phillips #00 screwdriver, remove the 15, 3.0 mm rear panel screws located around the perimeter of the phone.

Step 8



- Flip the phone over so that the screen is facing up.
 - Wedge the plastic opening tool between the screen and the rear panel.
 - Push up on the opening tool to separate the panel from the phone.
 - Continue to do this around the entire phone until the rear panel is no longer connected to the device.
- ⓘ The rear case and screen are fastened tightly to each other. It might help to use the picks as wedges to keep the case and screen separated as you run the opening tool along the edges.

Step 9 — Front-Facing Camera



- Wedge the plastic opening tool under the front-facing camera. It's located on the top, right side of the motherboard.
- Push down on the plastic opening tool to make the camera pop out of the device.

Step 10



- Use your fingers to pull the camera all the way out of the phone.

To reassemble your device, follow these instructions in reverse order.