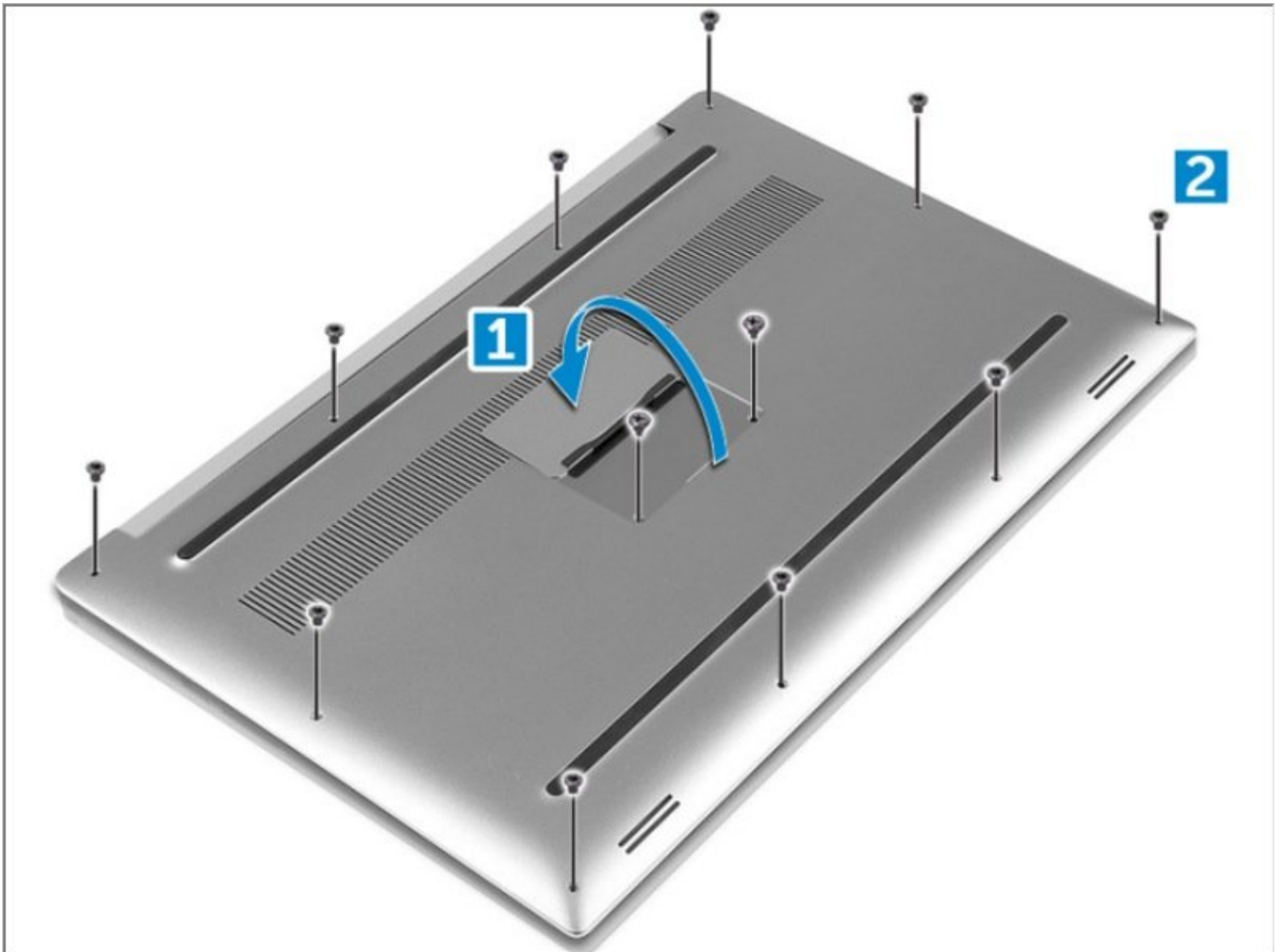




Dell Precision 5520 Base Cover Replacement

Written By: Johnathan Hammond

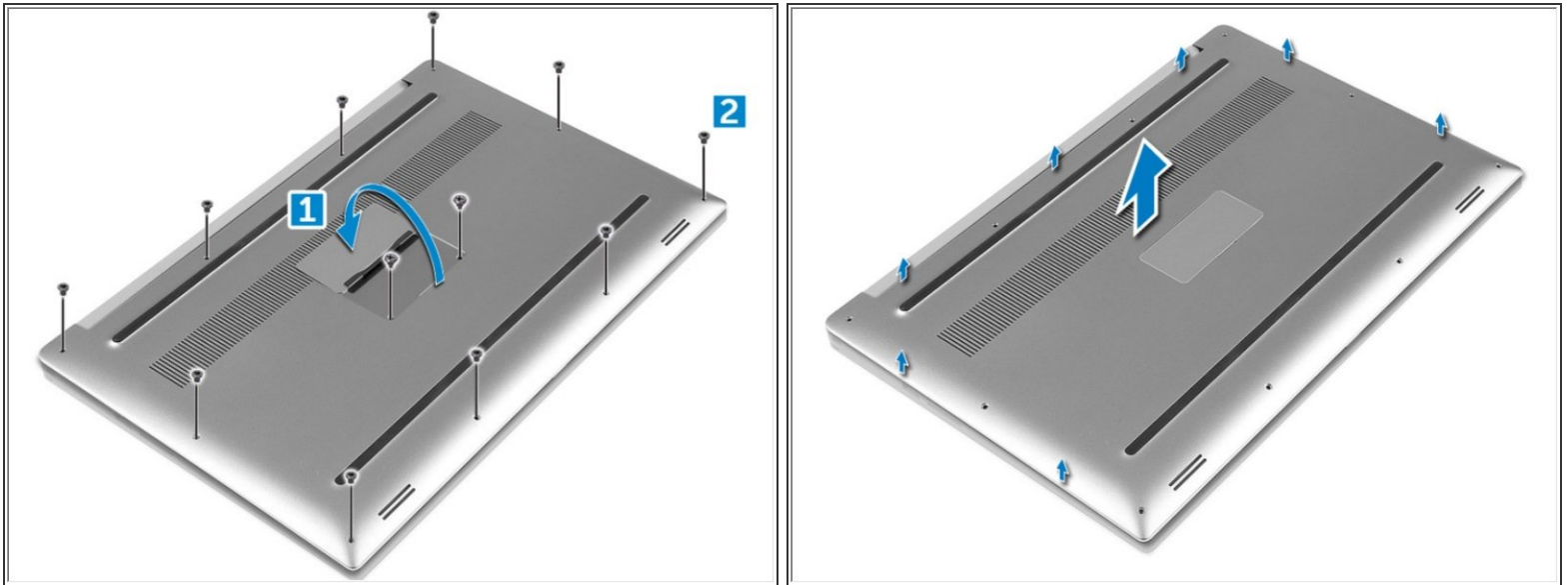




TOOLS:

- [T5 Torx Screwdriver](#) (1)
 - [Phillips #0 Screwdriver](#) (1)
-

Step 1 — Base Cover



- ⓘ Be sure to power off and unplug your device before you begin your repair.
- Turn the system badge flap over (1) and then remove the ten M2x3 screws that secure the base cover to the computer (2).
- Pry the edges of the base cover and lift it to remove it from the computer.
- ⓘ NOTE: Use a Torx #5 screwdriver for the base screws and a Phillips screwdriver for the two M2x8 screws inside the badge flap.

To reassemble your device, follow these instructions in reverse order.