



# SEGA Genesis Flashback Controller Buttons Replacement

This guide is for replacing the buttons in your...

Written By: Viet Nguyen



# INTRODUCTION

This guide is for replacing the buttons in your Sega Genesis Flashback controller. If your buttons are no longer functioning then this guide will show the process to replace them.

Before using this guide find any buttons on your controller that seem stuck or damaged. This will help you see which parts of the controller you need to take apart. In step 1 it is likely that the parts of the controller will become loose when unscrewing the bottom plate. Be sure to keep both plates of the controller facing downward so no inner parts of the controller fall out.

Be very careful when removing the rubber membranes shown in step 2. If you are not gentle when removing this part you could damage it and will no longer be usable.

Good luck with your replacing your buttons for your Sega Genesis Flashback controller! This guide aims to replace the parts and re-assemble the controller efficiently.

---

## TOOLS:

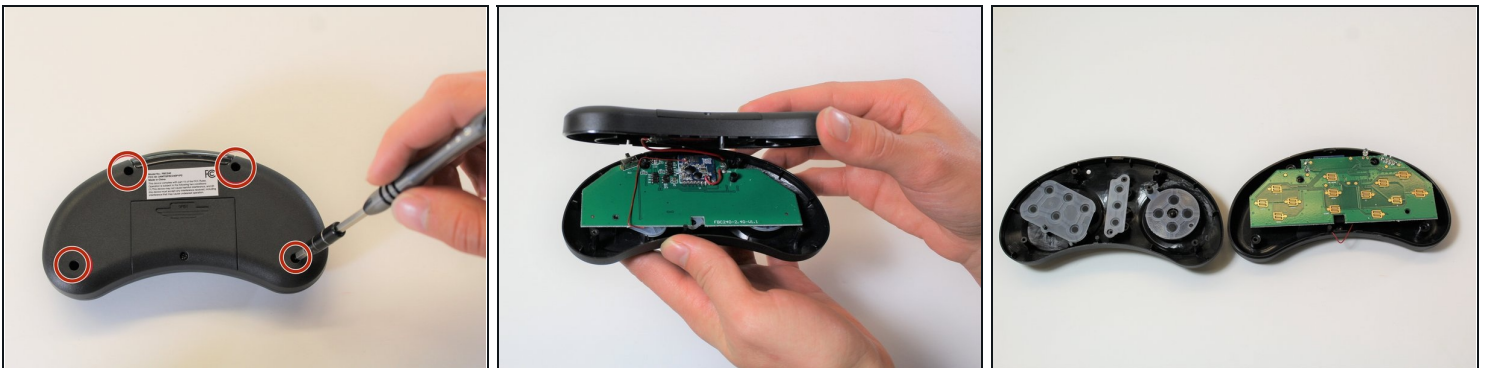
[Phillips #000 Screwdriver](#) (1)

[54 Bit Driver Kit](#) (1)

[Magnetic Project Mat](#) (1)

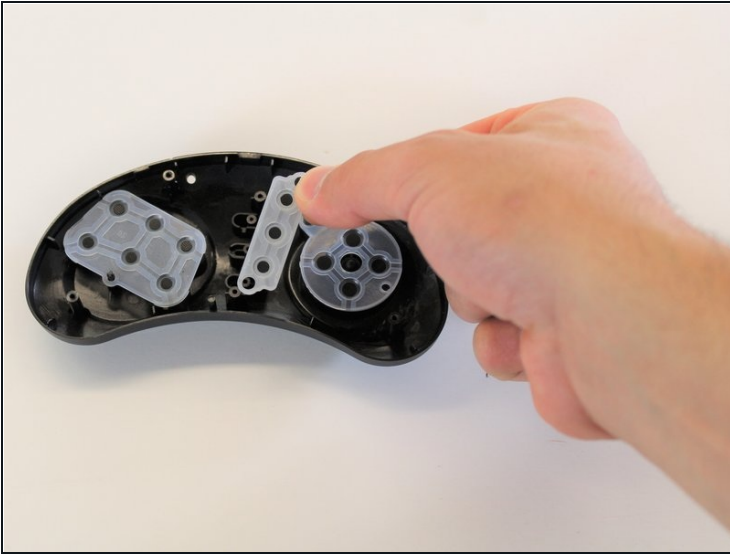
---

## Step 1 — Controller Back Cover



- Hold the controller with the bottom plate facing up, and gently remove the top plate that is connected to the motherboard of the controller. Set the top plate aside.
- Remove the screws on the back of the controller with the Phillips #000 screwdriver.
- ① Be sure to separate the two plates with the bottom facing up, to keep the buttons from falling out.

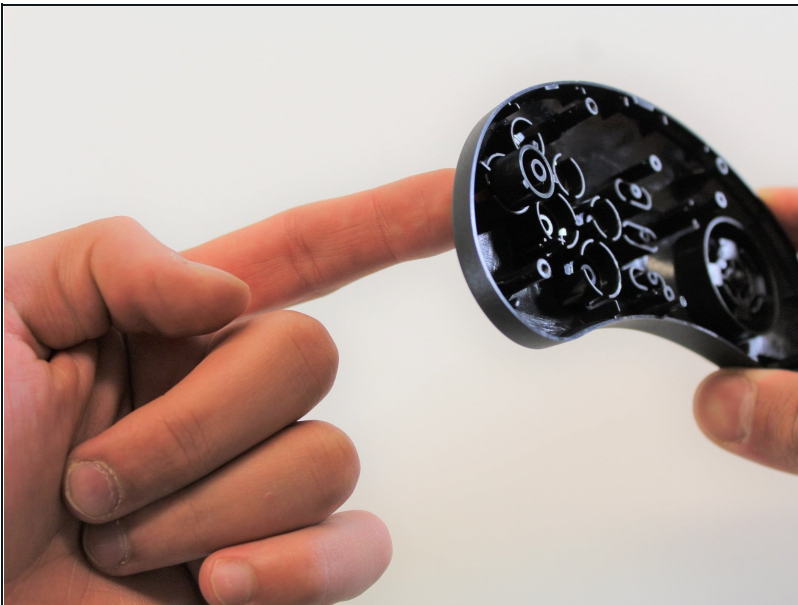
## Step 2 — Controller Buttons



**⚠ CAUTION:** Pull gently on the rubber membranes to avoid tearing .

- Use two fingers to remove each rubber membrane that rests on top of the buttons.

## Step 3



- Pop the button out from the front side of the controller.
- Pull the button out from the backside using the other hand.
- ☑ All removable buttons can only be placed in their respective holes due to unique groove patterns on the buttons. Keep in mind where each button belongs to make re-assembly easier.
- ⓘ All buttons can be removed except for the D-Pad.

## Step 4



- ① Repeat Step 3 for the remaining buttons.
- The button should pop out seamlessly and placed to the side.
- ☑ Repeat the prior steps in order to remove all the buttons. Set them aside in an order you will remember to where they belong.

After completing step 4 you will need to re-assemble your controller. Do this by starting from step 2 and work backwards.