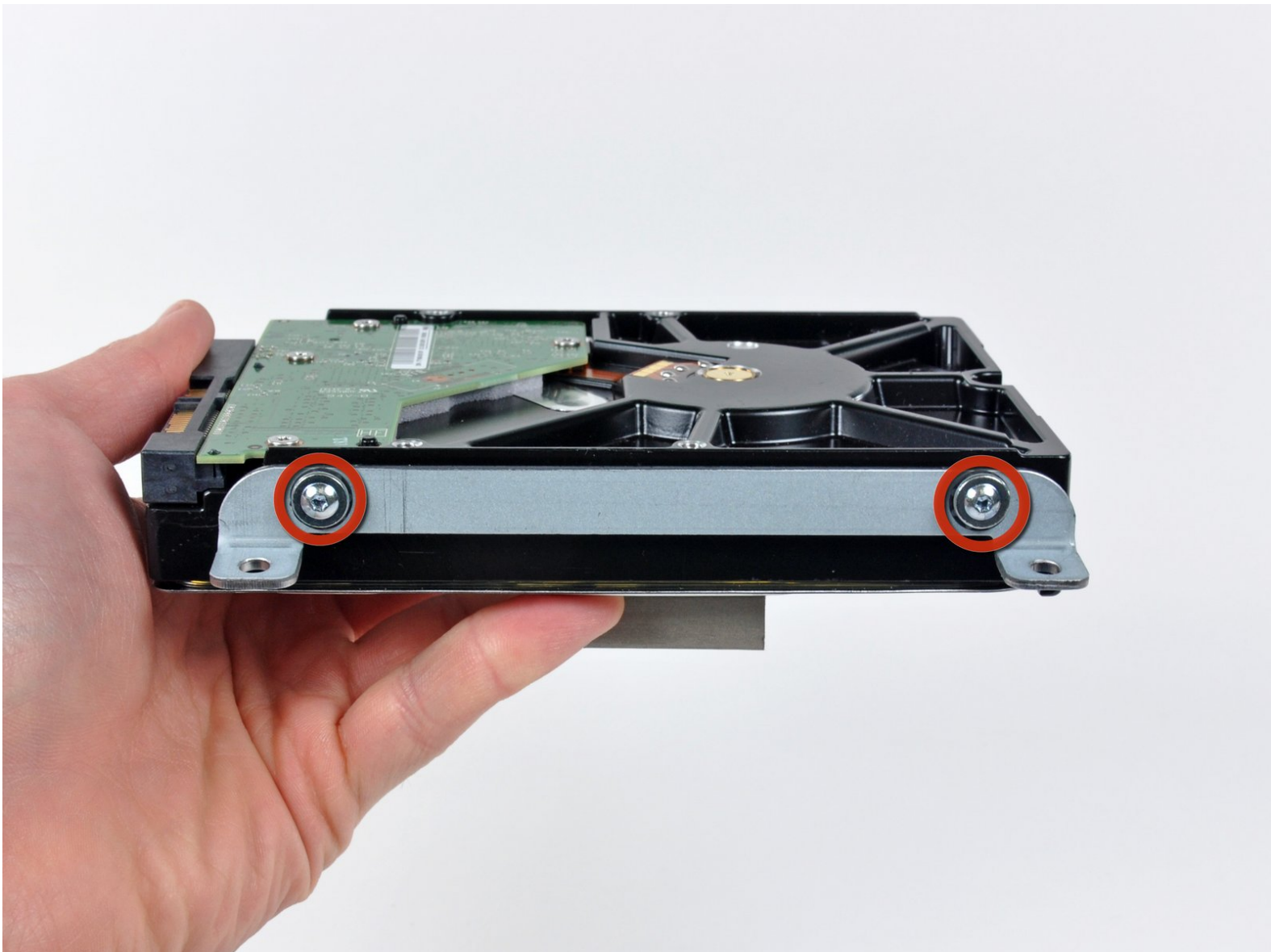




iMac Intel 21.5" EMC 2308 Hard Drive Prereq

This is a prereq only guide

Written By: Andrew Bookholt



INTRODUCTION

Prereq only guide



TOOLS:

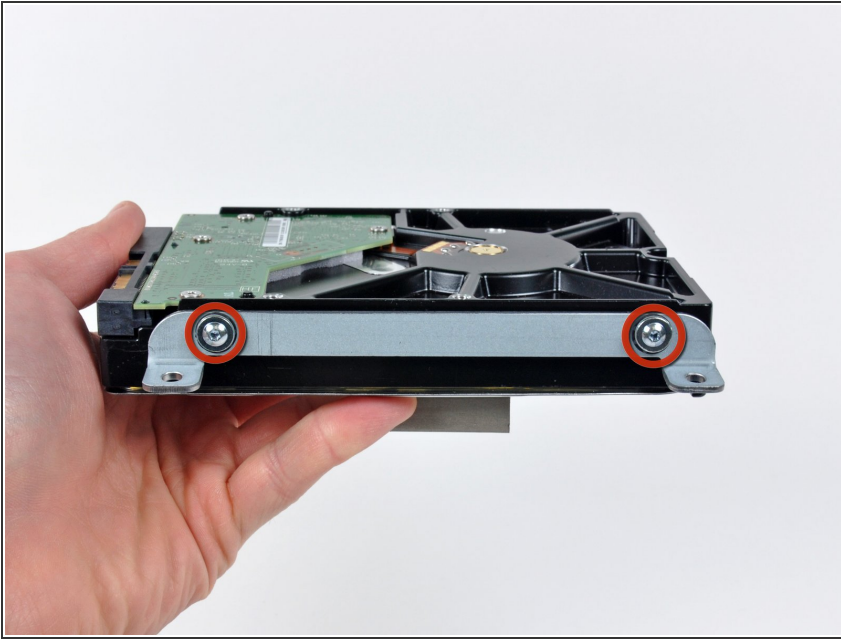
- [Heavy-Duty Suction Cups \(Pair\)](#) (1)
- [Spudger](#) (1)
- [T10 Torx Screwdriver](#) (1)
- [T8 Torx Screwdriver](#) (1)



PARTS:

- [iMac Intel 21.5" and 27" Late 2009-Mid 2010 SSD Upgrade Bundle](#) (1)
- [Universal Drive Adapter](#) (1)
- [1 TB 7200 RPM 3.5" Hard Drive](#) (1)
- [2 TB SATA Desktop Hard Drive](#) (1)
- [3 TB SATA Desktop Hard Drive](#) (1)
- [4 TB 3.5" Hard Drive](#) (1)
- [2 TB SSD Hybrid 3.5" Hard Drive](#) (1)
- [1 TB SSD Hybrid 3.5" Hard Drive](#) (1)
- [4 TB SSD Hybrid 3.5" Hard Drive](#) (1)

Step 1 — Hard Drive



- Remove the two T8 Torx screws securing the upper bracket to the hard drive.
- Remove the upper bracket from the hard drive.

Step 2



- Remove the two T8 Torx pins from the other side of the hard drive.

Step 3



- Carefully peel off the piece of EMI foam attached to the front of the hard drive.
- ☑ Don't forget to transfer this to your new hard drive.

To reassemble your device, follow these instructions in reverse order.