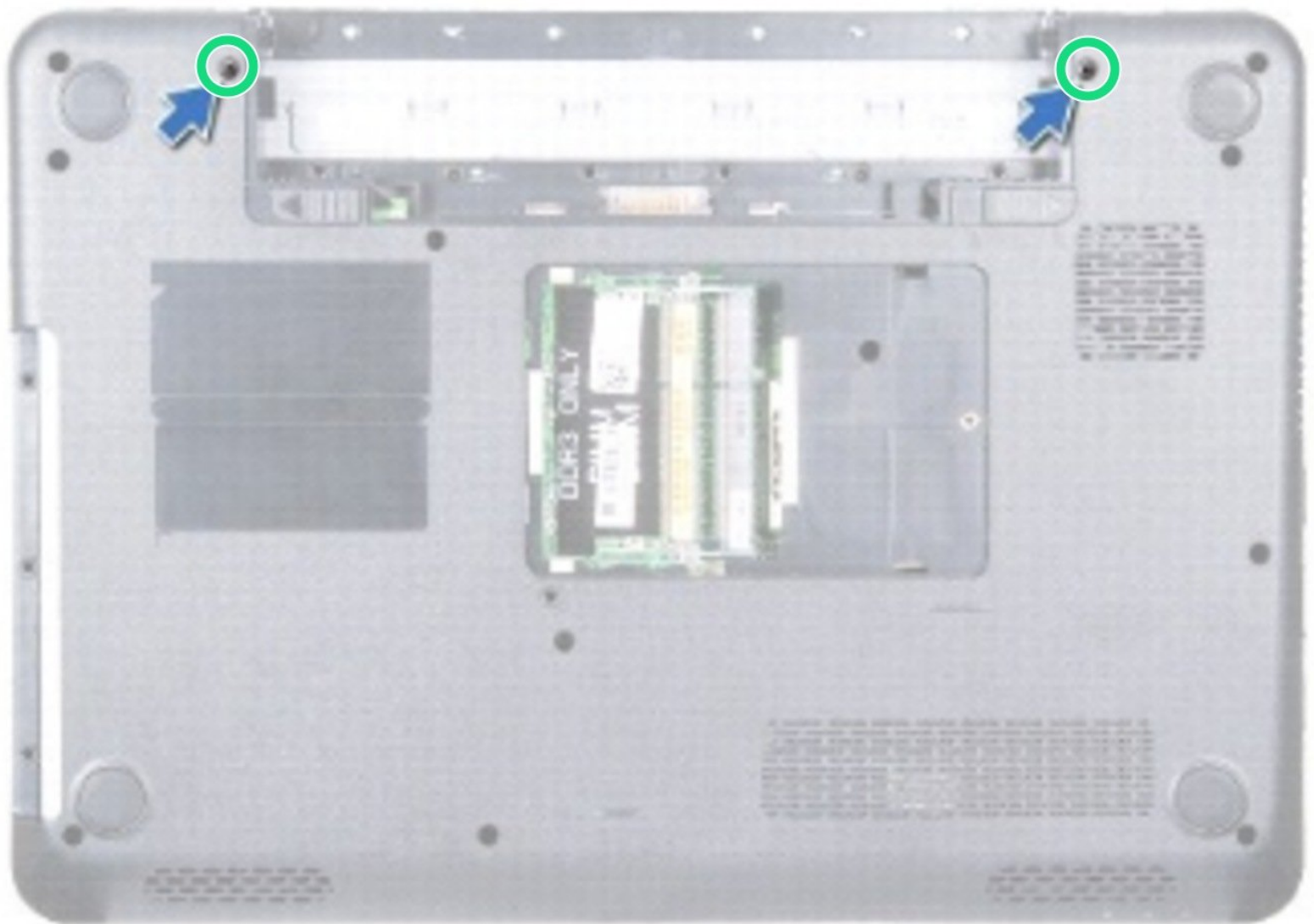




Dell Inspiron N4010 Display Assembly Replacement

Written By: Terrence15



INTRODUCTION

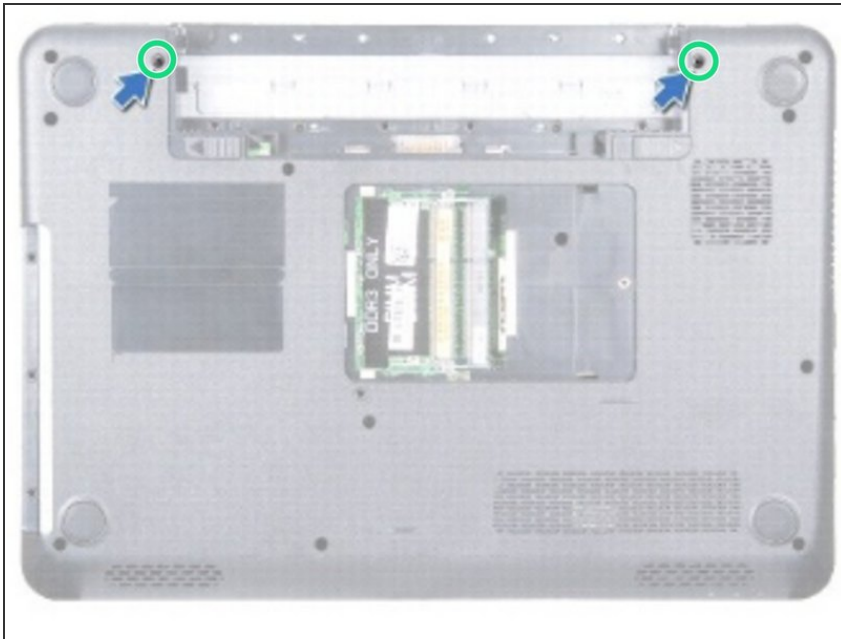
In this guide, we will be showing you how to remove and replace the Display Assembly.



TOOLS:

- [Phillips #0 Screwdriver](#) (1)
-

Step 1 — Remove the Screws

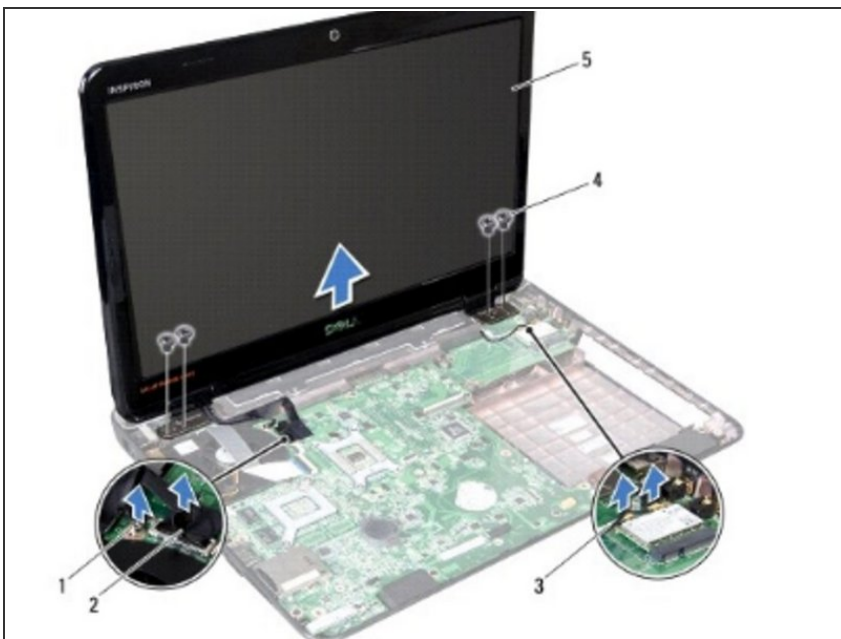


⚠ WARNING: Before working inside your computer, read the safety information that shipped with your computer. Follow the instructions in [Before You Begin](#).

⚠ CAUTION: To avoid electrostatic discharge, ground yourself by using a wrist grounding strap or by periodically touching an unpainted metal surface (such as a connector on your computer).

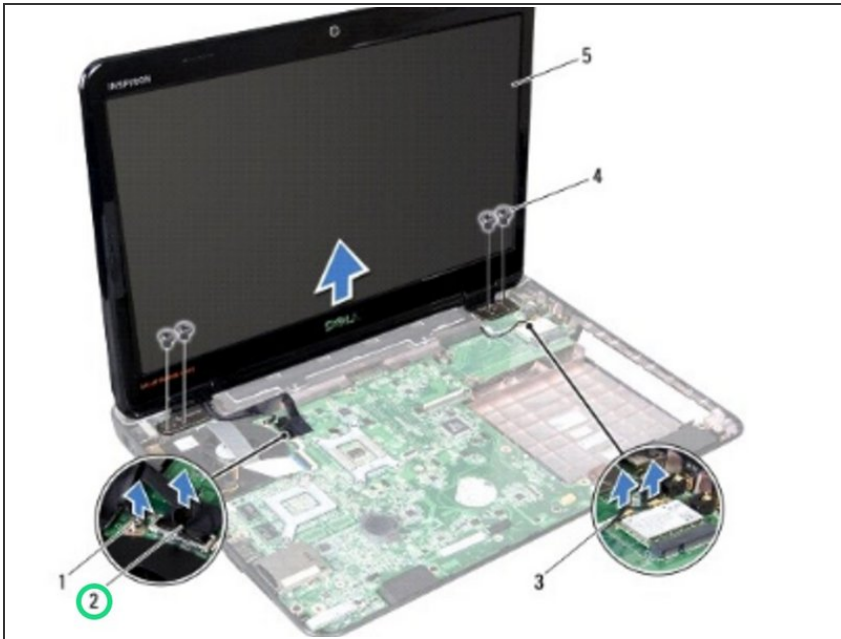
- Remove the two screws that secure the display assembly to the computer base.

Step 2 — Open the Display



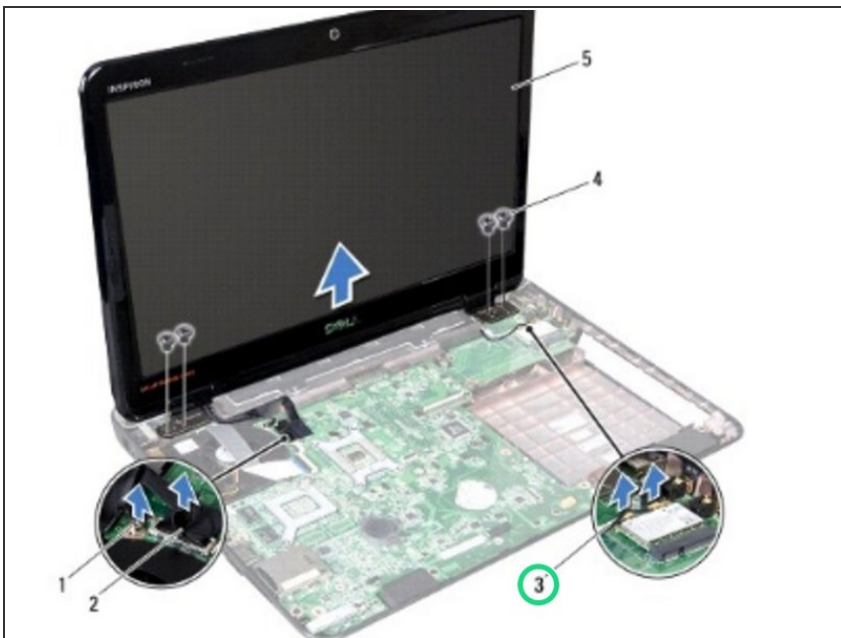
- Turn the computer over and open the display as far as possible.

Step 3 — Disconnecting the Display Cable



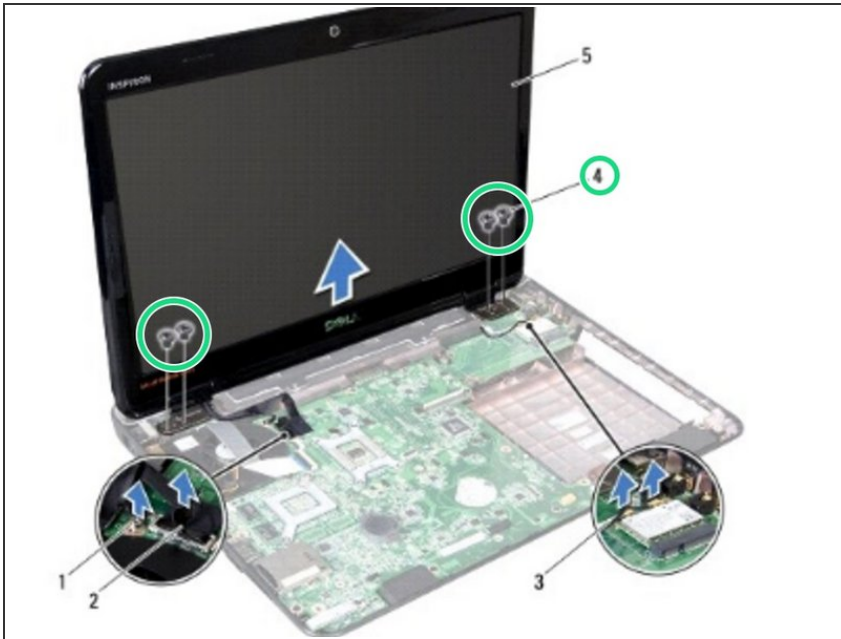
- Disconnect the display cable from the connector on the system board, and remove the display cable grounding screw.

Step 4 — Remove the Cables



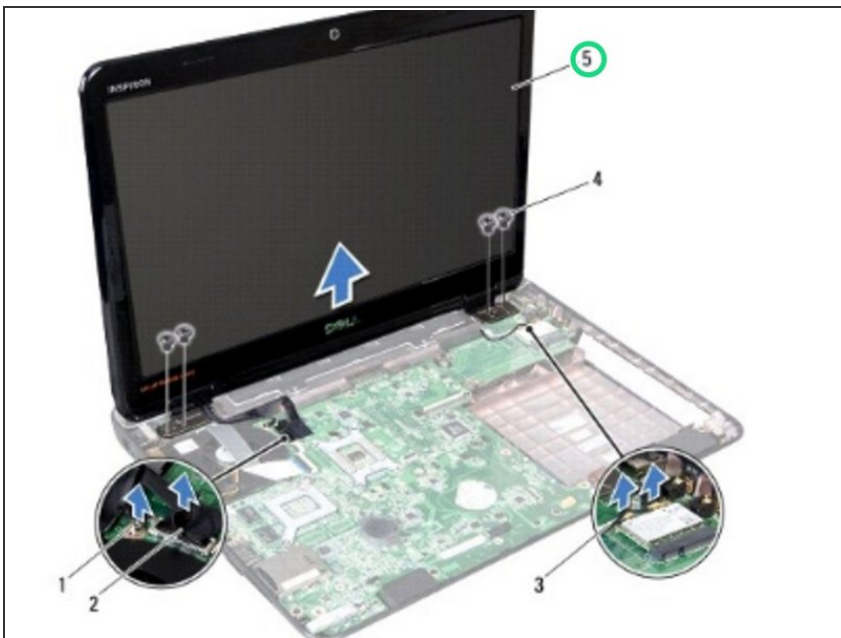
- Make a note of the Mini-Card antenna cables and display cable routing and remove the cables from the routing guides.

Step 5 — Remove the Screws



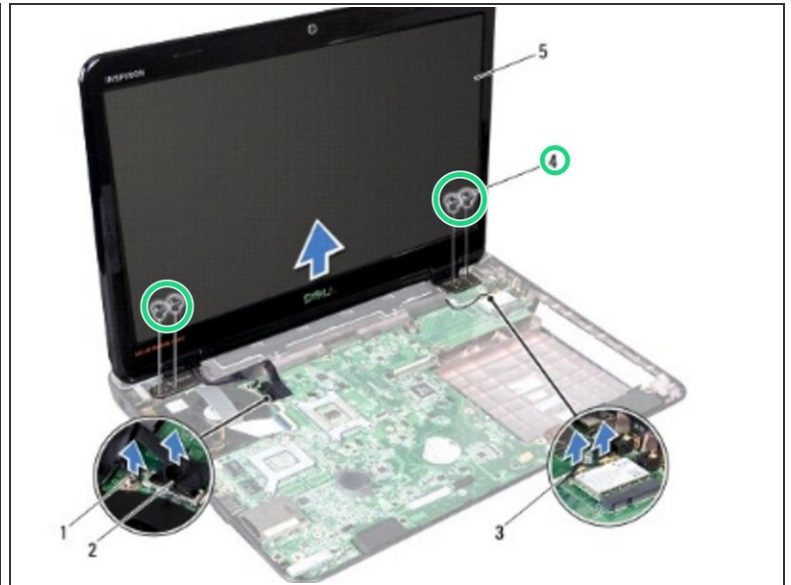
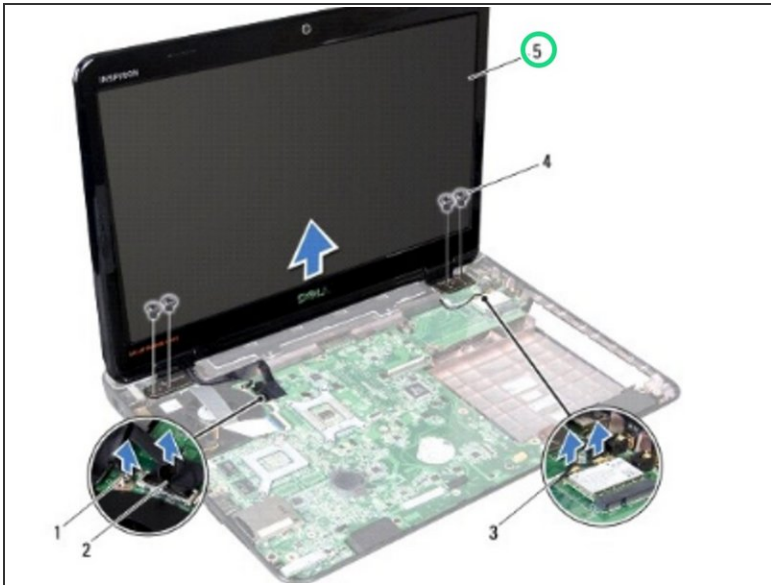
- Hold the display assembly in place and remove the four screws that secure the display assembly to the computer base.

Step 6 — Remove the Display Assembly



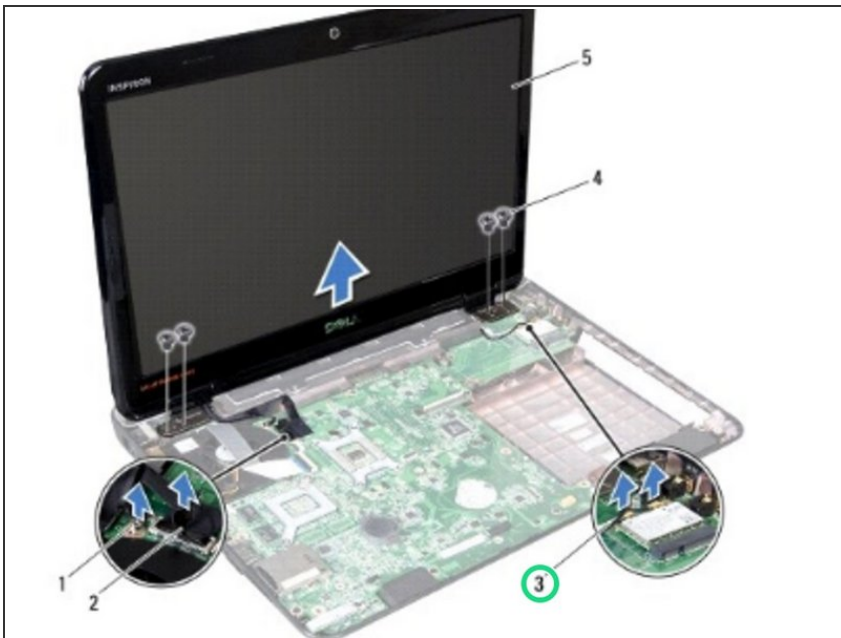
- Lift and remove the display assembly out of the computer base.

Step 7 — Placing the Display Assembly



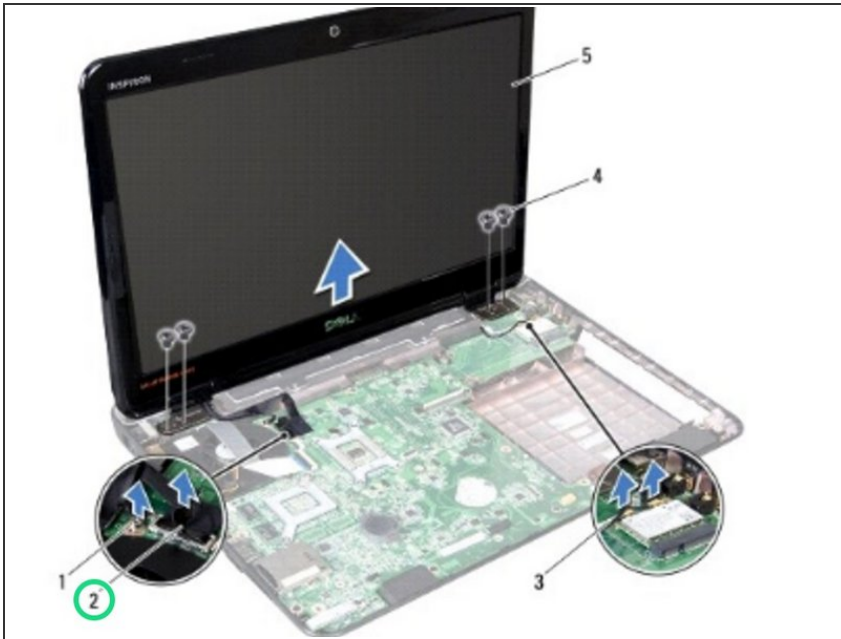
- Place the **NEW** display assembly in position and replace the four screws (two on each side) that secure the display assembly to the computer base.

Step 8 — Routing the Cables



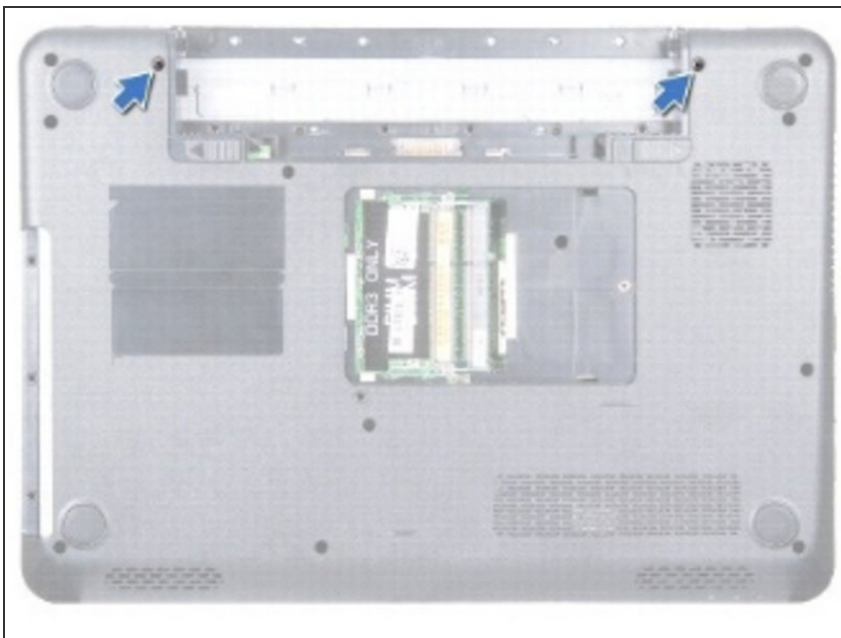
- Route the Mini-Card antenna cables and display cable through the routing guides.

Step 9 — Connect the Display Cable



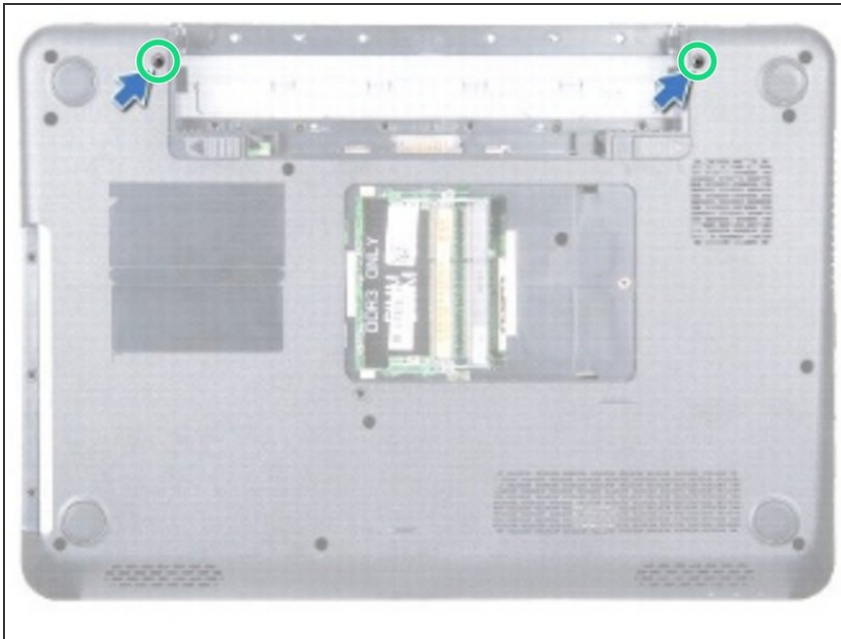
- Connect the display cable to the connector on the system board, and replace the display cable grounding screw.

Step 10 — Close the Display



- Close the display and turn the computer over.

Step 11 — Replace the Screws



- Replace the two screws that secure the display assembly to the computer base.