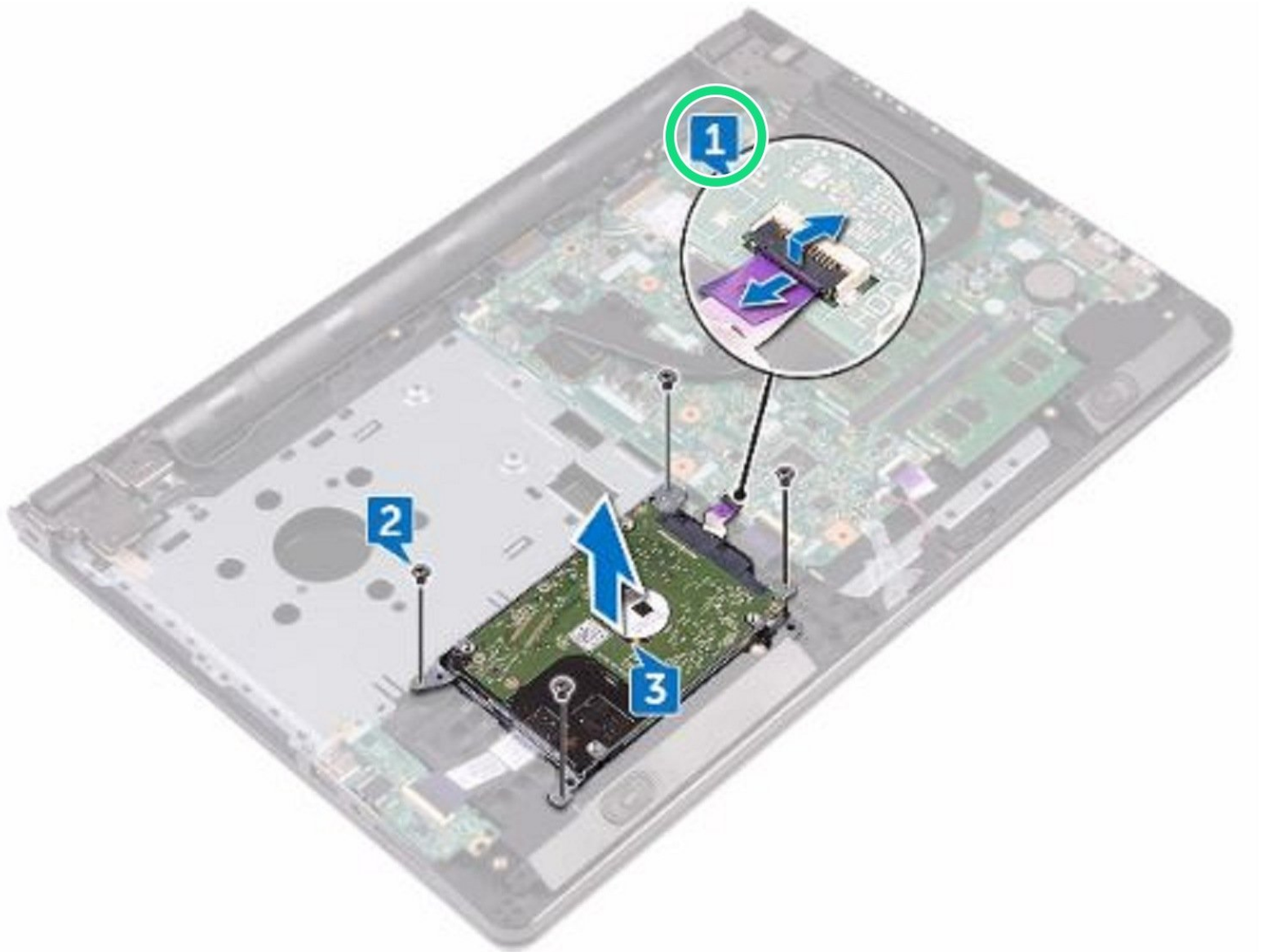




# Dell Inspiron 15 3565 Hard Drive Replacement

Written By: Terrence15



---

# INTRODUCTION

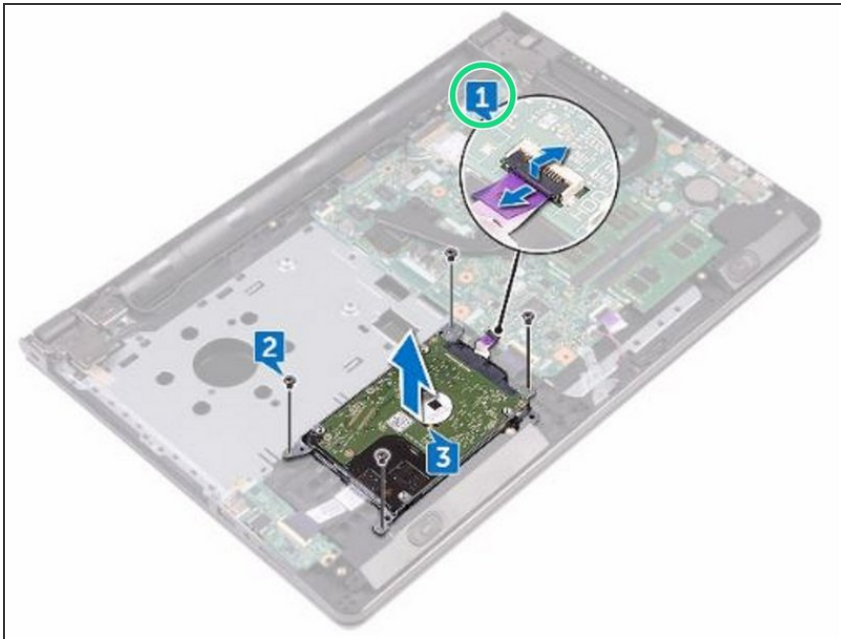
In this guide, we will be showing you how to remove and replace the Hard Drive.



## TOOLS:

- [Phillips #0 Screwdriver](#) (1)
-

## Step 1 — Disconnect the Hard Drive Cable

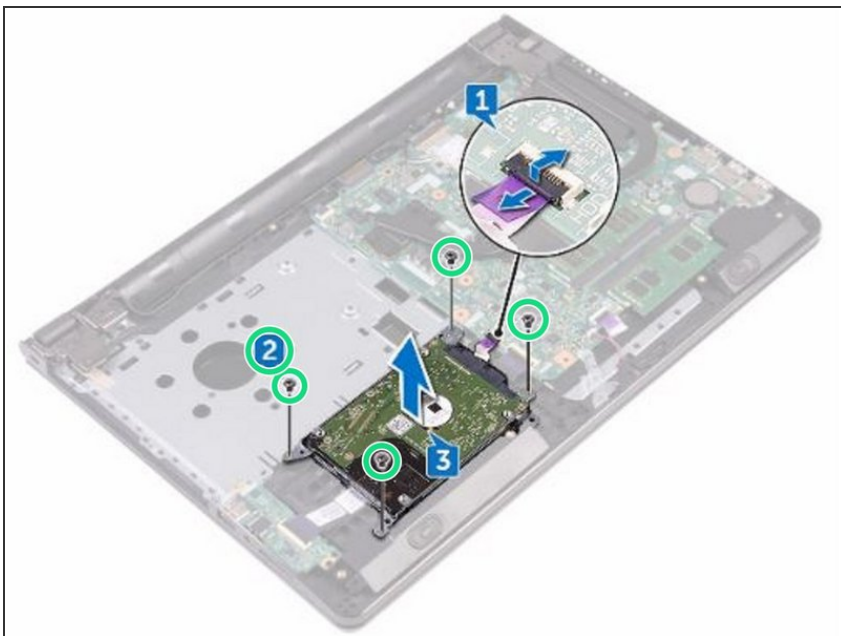


**⚠ WARNING:** Before working inside your computer, read the safety information that shipped with your computer and follow the steps in [Before Working Inside Your Computer](#). After working inside your computer, follow the instructions in [After Working Inside Your Computer](#).

**⚠ CAUTION:** Hard drives are fragile. Exercise care when handling the hard drive.

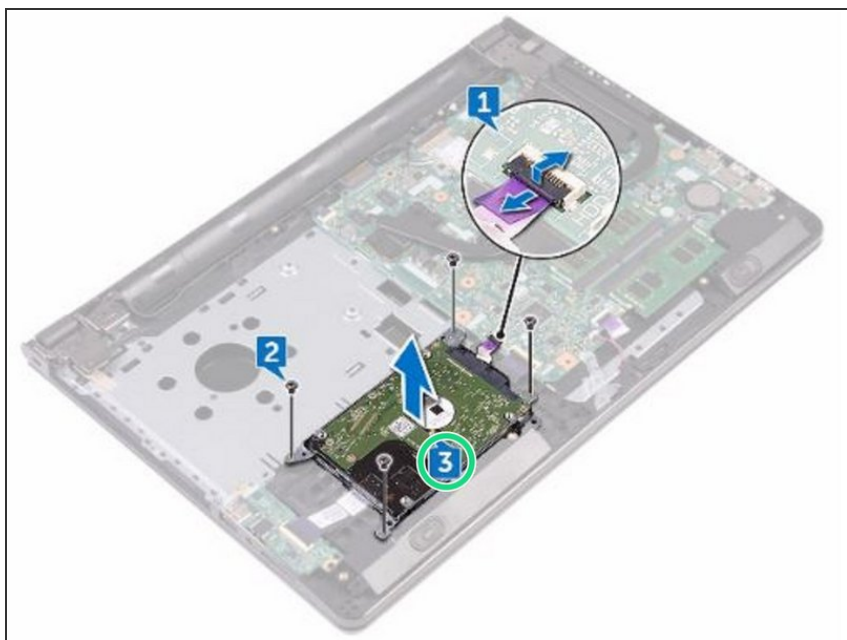
- Open the latch and disconnect the hard-drive cable from the system board.

## Step 2 — Remove the Screws



- Remove the four screws (M2x3) that secure the hard-drive assembly to the palm-rest assembly.

### Step 3 — Lifting the Hard-Drive Assembly



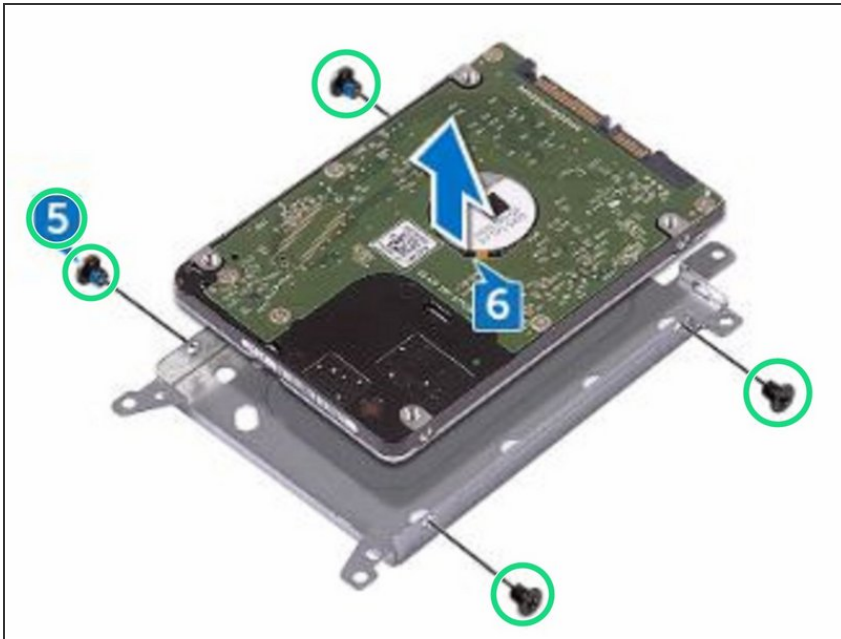
- Lift the hard-drive assembly off the palm-rest assembly.

### Step 4 — Disconnecting the Interposer



- Disconnect the interposer from the hard-drive assembly.

## Step 5 — Remove the Screws



- Remove the four screws (M3x3) that secure the hard-drive bracket to the hard drive.

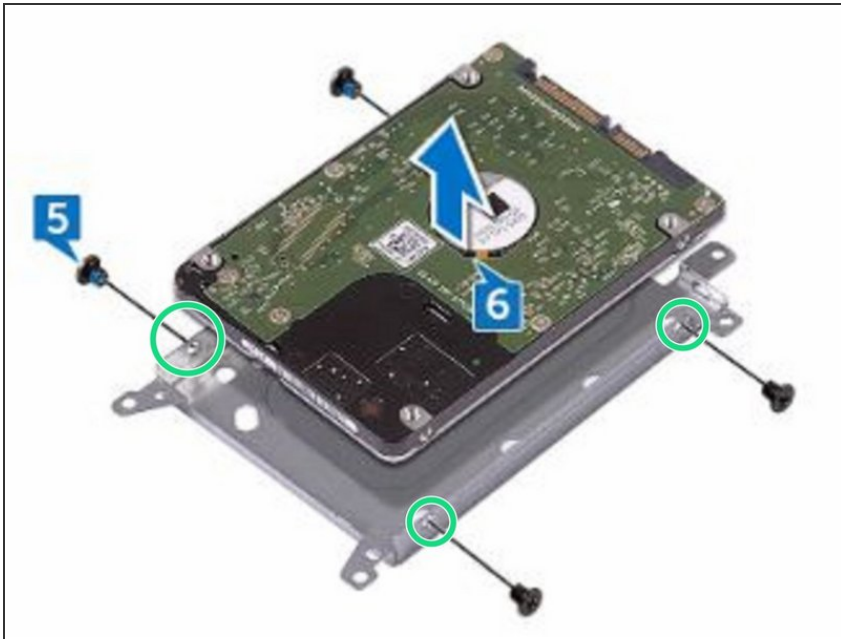
## Step 6 — Lifting the Hard Drive



- Lift the hard drive off the hard-drive bracket.

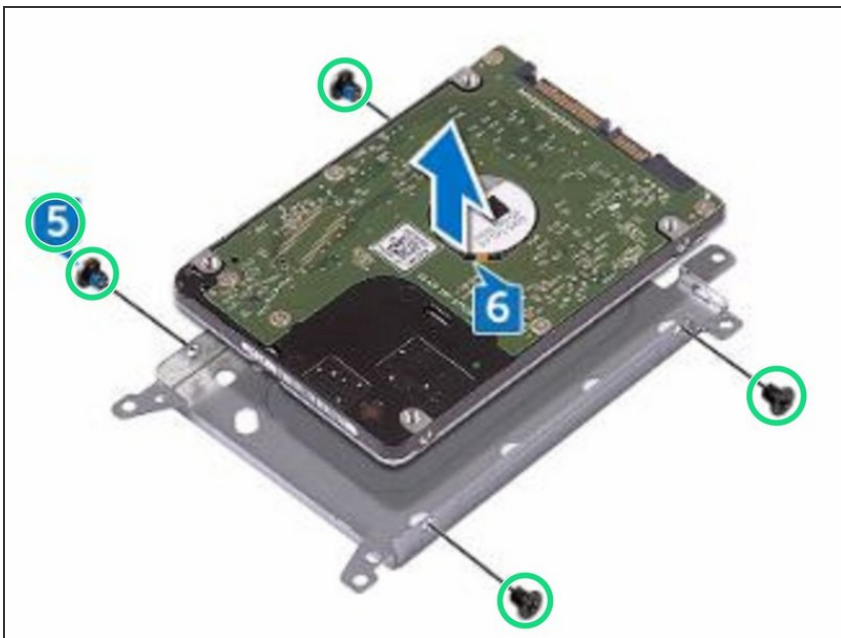


## Step 7 — Align the Screw Holes



- Align the screw holes on the hard-drive bracket with the screw holes on the **NEW** hard drive.

## Step 8 — Replace the Screws



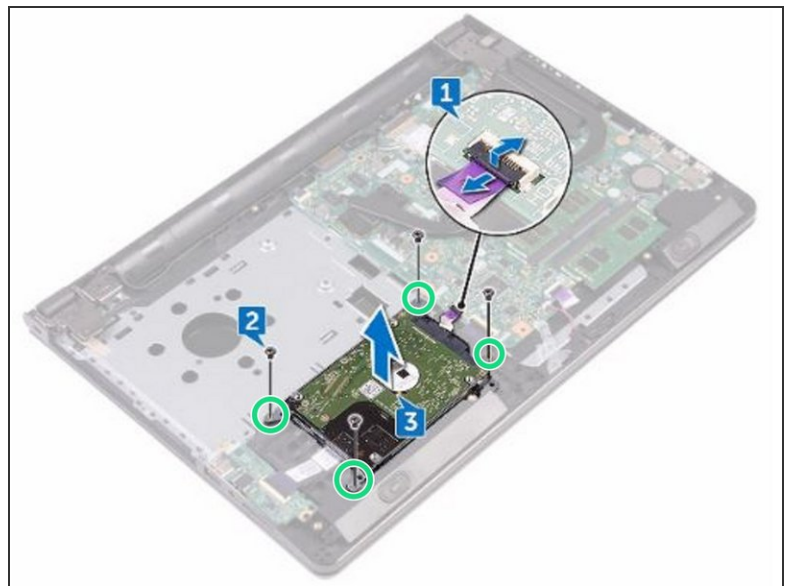
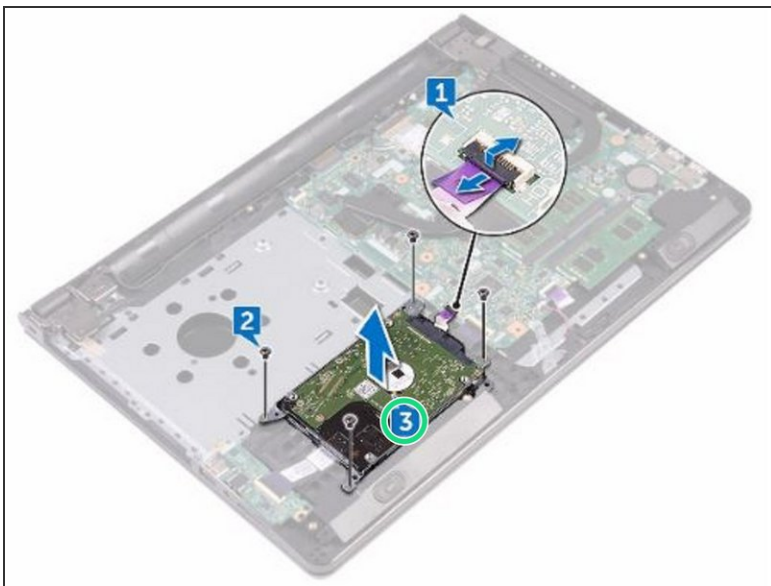
- Replace the four screws (M3x3) that secure the hard-drive bracket to the hard drive.

## Step 9 — Connect the Interposer



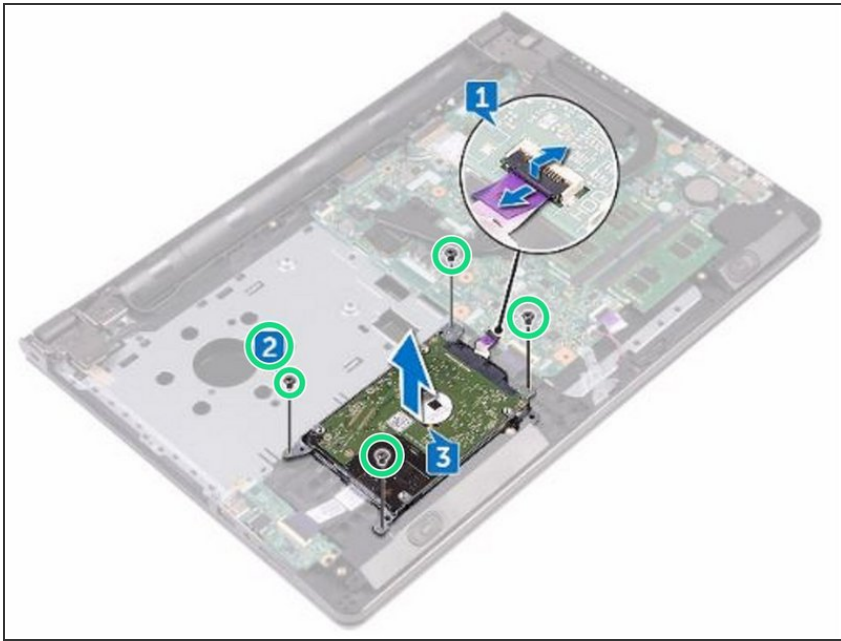
- Connect the interposer to the hard drive.

## Step 10 — Placing the Hard Drive Assembly



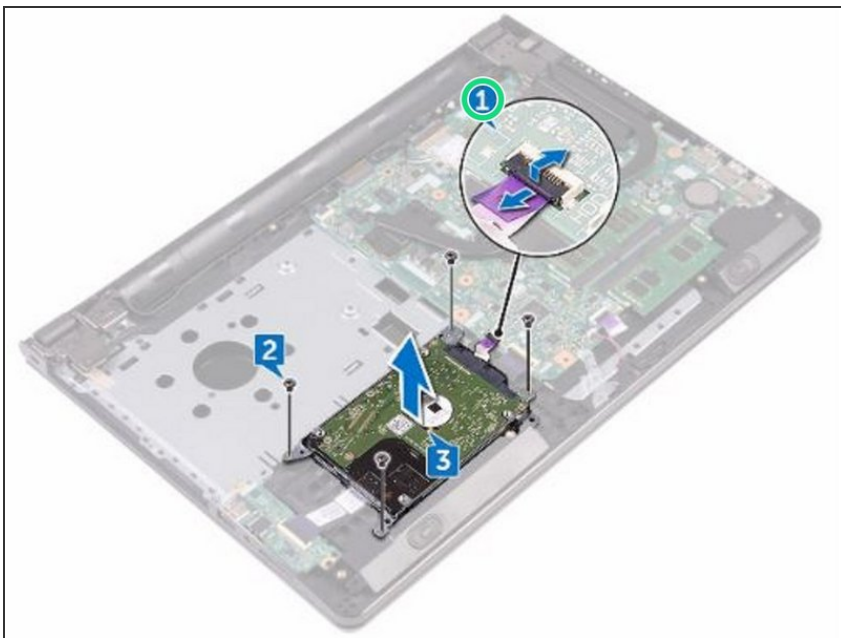
- Place the hard-drive assembly in the palm-rest assembly and align the screw holes on the hard-drive assembly with the screw holes on the palm-rest assembly.

## Step 11 — Replace the Screws



- Replace the four screws (M2x3) that secure the hard-drive assembly to the palm-rest assembly.

## Step 12 — Sliding the Hard Drive Cable



- Slide the hard-drive cable into its connector on the system board and close the latch to secure the cable.