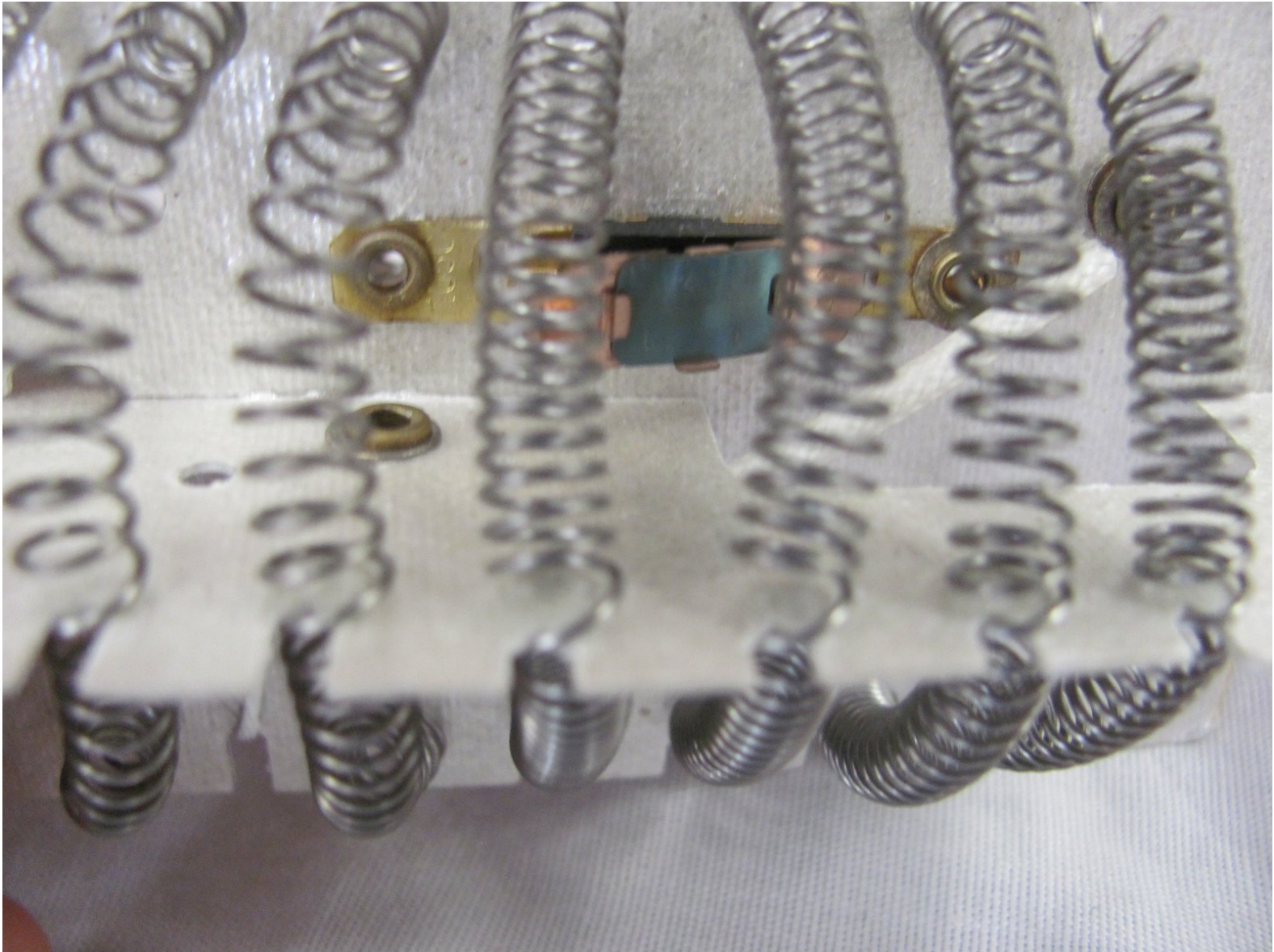




Revlon 473 Thermal Cutout Replacement

Written By: Jessica Leyva





TOOLS:

- [Phillips #2 Screwdriver](#) (1)
- [Spudger](#) (1)



PARTS:

- [Thermal Cutout](#) (1)

Step 1 — Shell



⚠ Before disassembly, make sure that the device is unplugged.

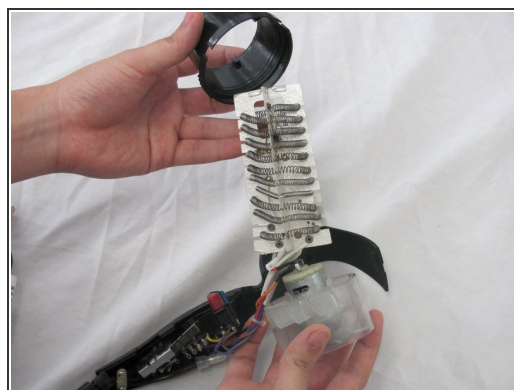
- Remove the two 17.83 mm black screws located on the handle.

Step 2



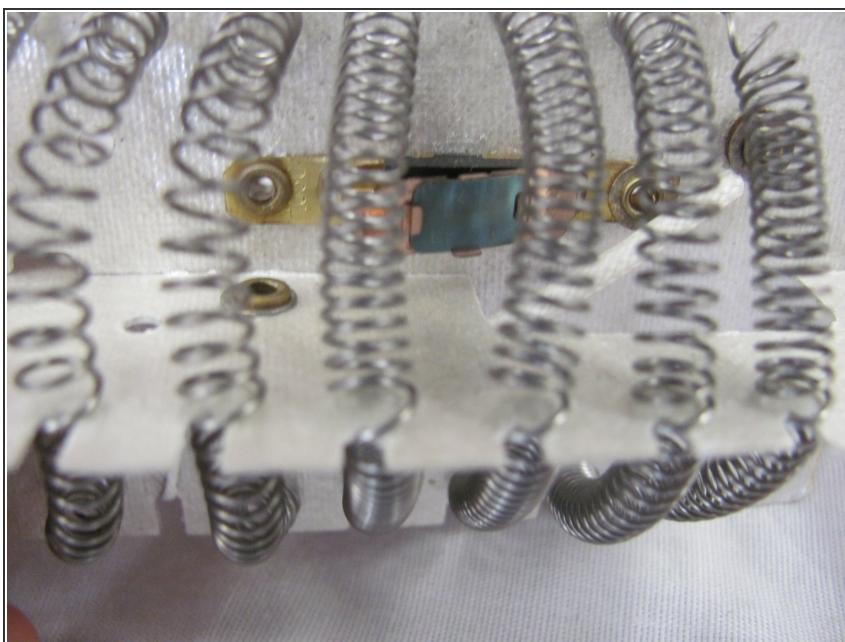
- Separate the shell from the main component.
- Check to ensure each piece is free from debris.

Step 3



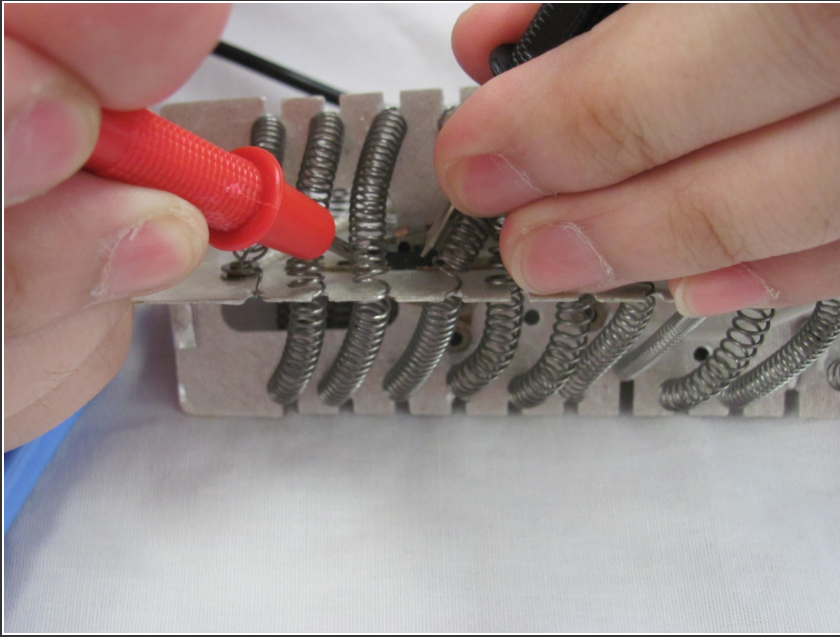
- Remove the casing from the heating element.
- ⓘ For reassembly, reattach the silver casing before the black cover.

Step 4 — Thermal Cutout



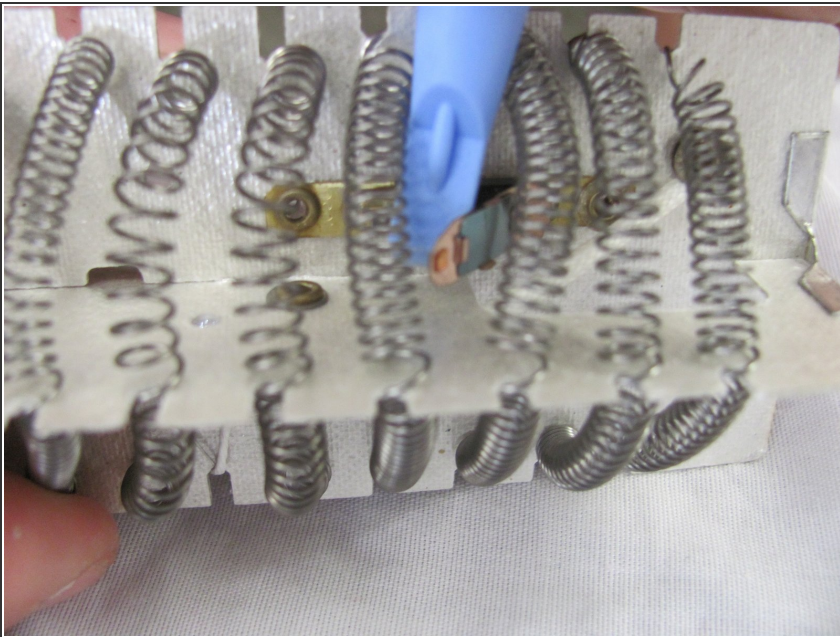
- Locate the thermal cutout under the coils of the heating element.

Step 5



- Test the thermal cutout for continuity using the multimeter.
- ⓘ Make sure the multimeter is set to 200 ACV and bring the probes toward the thermal cutout.
- If the numbers on the multimeter continue to change, the circuit is closed and properly functioning.
- If the multimeter reads a consistent number, the circuit is opened and the thermal cutout needs to be replaced.

Step 6



- To replace the thermal cutout, use the spudgers to extract the object.
- ⓘ To remove, wedge it back and forth until it comes free.
- You do not need to take out the gold piece, only the thermal cutout.

Step 7



- Replace the old thermal cutout with a new thermal cutout by snapping it into place.

To reassemble your device, follow these instructions in reverse order.