



Samsung Epic 4G Micro USB Port Replacement

Installing a new micro USB port into your Samsung Epic 4G requires little experience and minimal phone disassembly.

Written By: Andrew Cunningham



INTRODUCTION

Show user how to install a new micro USB port into device.



TOOLS:

- [Phillips #000 Screwdriver](#) (1)
 - [Spudger](#) (1)
 - [Tweezers](#) (1)
-

Step 1 — Phone Case



- Slide your fingernail along the edge of the device and pull at the plastic backing.
- ⓘ While pulling the plastic backing apart from the device, you will hear a snap sound which signals that the backing has detached.

Step 2



- Pull at the plastic backing gently to remove it after hearing the snap sound.

Step 3 — Battery



- Remove the battery from the device by pulling the battery edge upwards.

Step 4 — Removing the Memory Card:



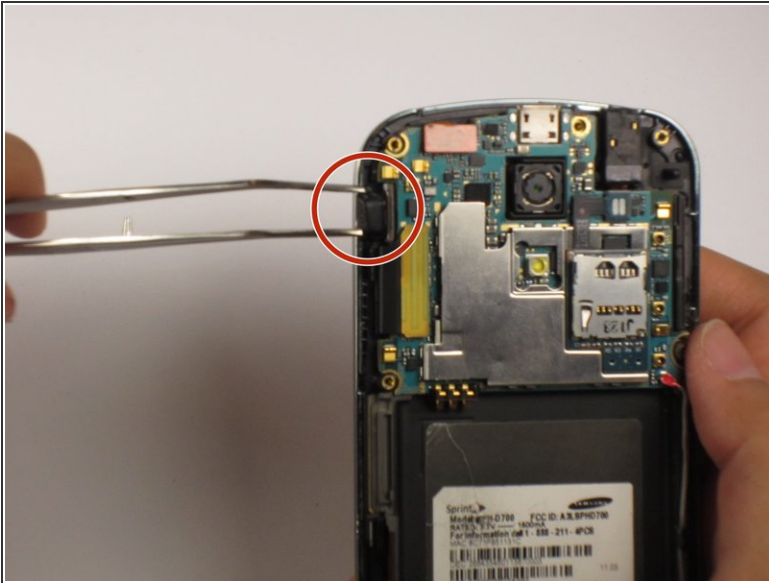
- Locate the memory card on the upper right-hand corner of the device.
- Remove the memory card from the device by gently sliding it out of its holder with your fingers.

Step 5 — Removing the Back Housing



- Remove the seven screws from the back of the phone using the Phillips #000 screwdriver.
- Separate the backing from the silver trim around the phone by using a nylon spudger to pry between the two components.
- ⓘ While separating the two components, most of the buttons (including the power button) will fall out.

Step 6 — Removing the Power Button



- Remove the power button using tweezers if it did not fall out in the previous step.
- ❗ At this point, you can replace the power button with a new one from a manufacturer.

Step 7 — Micro USB Port



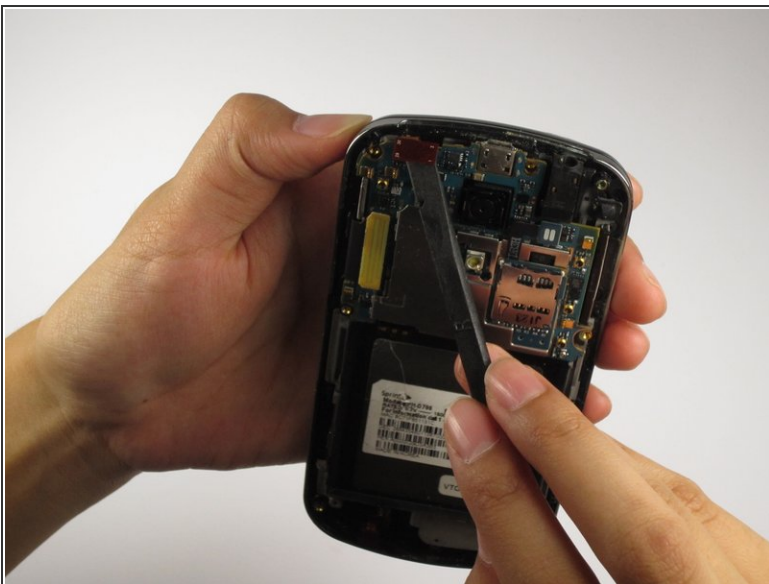
- Remove the white cable along the right side of the device (next to the battery housing) using the nylon spudger.
- Pull out both ends of the white cable. They will easily snap out of place without excessive tension.
- ⚠ Do not rip the white cables out of the device.

Step 8 — Removing the Antenna Assembly



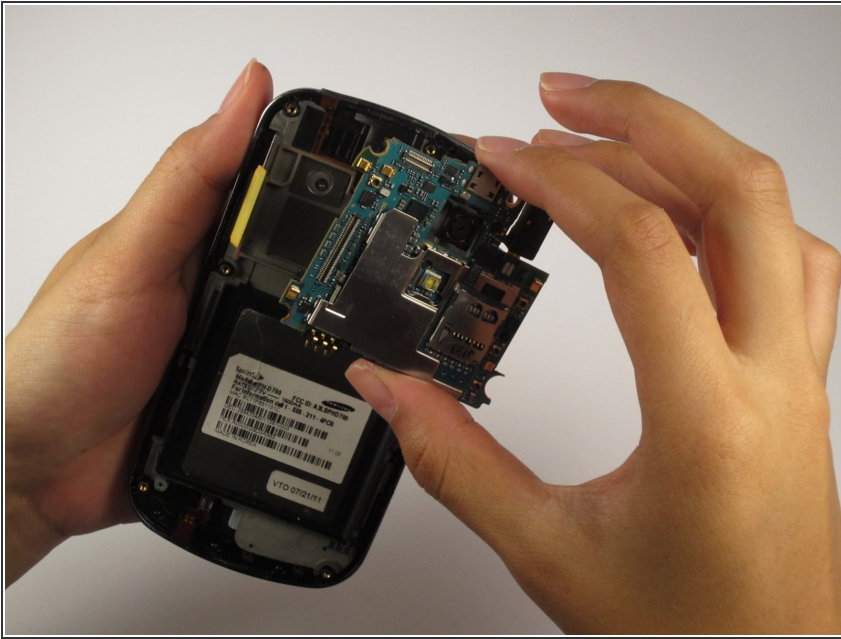
- Remove the screw holding the antenna assembly in place using a Tri-Point Y0 screwdriver.
- Snap the antenna assembly out of the device gently using your fingers.

Step 9 — Removing the Flex Cable



- Pry the flex cable from the top of the phone by carefully using a nylon spudger.
- Repeat this step for the larger flex cable located on the left side of the device below the smaller one.

Step 10



- Lift and remove the motherboard from the device.
- ⓘ The USB port is located at the top of the motherboard. At this point, replace the port with a new one from a manufacturer.

To reassemble your device, follow these instructions in reverse order.